

**Camping Fees** - Many Forest campgrounds are participating in the Recreation Fee Program where 85% of the fees collected are used to improve or maintain the campsite's existing facilities. Other fee campgrounds may be managed under a concessionaire special-use permit. Several campgrounds do not require a fee at all.

**14-Day Camping Limit** - Campers are welcome to stay at any of our campgrounds for a maximum of 14 consecutive days.

**Be Safe-** Please remember to be careful! You are primarily responsible for your own safety. Look out for natural hazards and dangers when you are in the Forest. If you hike off trails or swim or dive in streams or lakes, you do so at your own risk.

**Drinking Water** - Potable drinking water is not provided at most campgrounds. Make sure to pack enough drinking water for your trip.

**Campfires** - Be sure all fires are completely out before leaving them unattended. You may collect dead and down wood for your campfire, but do not gather more than you need. A permit is required to remove any firewood from the Forest. Please do not carve, chop, cut, or damage any live trees.

**Firearm Restrictions** - For obvious safety reasons, the use of firearms is not allowed within the campground.

**Pets in the Campground**  
All pets must be physically restrained on a leash (less than 6 feet in length). Owners are responsible for cleaning up after their pets.

**Pack It Out** - Garbage service is not provided in most of the camp-grounds listed. Please pack all of your garbage out of the forest.

**Quiet Time** - In consideration of others, please keep noise to a reasonable level. Radios and generators must be turned off by 10:00 PM.

### **America the Beautiful Interagency Senior/Access Passes**

All United States citizens or permanent residents aged 62 or older are entitled to an Interagency Senior Pass that sells for \$10.00. Blind or disabled residents may be entitled to a free Interagency Access Pass. Both passes provide a reduction in camping fees. Contact the local Forest Service office, visitor center, or campground host for more details.

### **For More Information, contact:**

#### **Supervisor's Office**

2517 S.W. Hailey Avenue  
Pendleton, OR 97801  
(541) 278-3716  
<http://www.fs.fed.us/r6/uma/>

#### **Heppner Ranger District**

P.O. Box 7  
Heppner, OR 97836  
(541) 676-9187

#### **Pomeroy Ranger District**

71 West Main St.  
Pomeroy, WA 99347  
(509) 843-1891

#### **North Fork John Day Ranger District**

P.O. Box 158  
Ukiah, OR 97880  
(541) 427-3231

#### **Walla Walla Ranger District**

1415 West Rose  
Walla Walla, WA 99362  
(509) 522-6280

"The U.S. Department of Agriculture (USDA) prohibits discrimination in all its programs and activities on the basis of race, color, national origin, age, disability, and where applicable, sex, marital status, familial status, parental status, religion, sexual orientation, genetic information, political beliefs, reprisal, or because all or part of an individual's income is derived from any public assistance program. (Not all prohibited bases apply to all programs.) Persons with disabilities who require alternative means for communication of program information (Braille, large print, audiotape, etc.) should contact USDA's TARGET Center at (202) 720-2600 (voice and TDD). To file a complaint of discrimination, write to USDA, Director, Office of Civil Rights, 1400 Independence Avenue, S.W., Washington, DC 20250-9410, or call (800) 795-3272 (voice) or (202) 720-6382 (TDD). USDA is an equal opportunity provider and employer."



United States Department of Agriculture  
Forest Service

# CAMPGROUNDS on the Umatilla National Forest



## Welcome

The Umatilla National Forest, located in the Blue Mountains of southeast Washington and northeast Oregon, covers 1.4 million acres of diverse landscapes and plant communities. The Forest has some mountainous terrain, but most of the Forest consists of v-shaped valleys separated by narrow ridges or plateaus. The landscape also includes heavily timbered slopes, grassland ridges and benches, and bold granite outcroppings.

Elevations range from 1,600 to 8,000 feet above sea level. Changes in weather are common, but summers are generally warm and dry with cool evenings. Cold and snowy winters and mild temperatures during spring and fall can be expected.

The Umatilla National Forest is divided roughly in half by Interstate 84. The north-half extends into Washington and is partially bordered on the west by the Umatilla Indian Reservation and on the southeast by the Wallowa-Whitman National Forest. The south-half is bordered by the Malheur and Wallowa-Whitman National Forests.

Forest visitors can select from over 20 campgrounds designed to blend with the forest environment. Most campgrounds are located away from traffic and commercial development where there is fishing, hunting, or other outdoor activities nearby. Camping is also allowed in most dispersed areas throughout the Forest. Campfire permits are not required, but campfires may be restricted during extreme fire danger.

In several of the campgrounds, where more facilities and services are provided, a fee is charged for overnight use. Campgrounds are available on a first-come-first-served basis.

## Some Popular Spots

**Penland Lake Campground** - Nestled beside scenic Penland Lake, this campground offers visitors the opportunity to camp, swim and fish. Located approximately 28 miles Southeast of Heppner, Oregon, Penland Lake campground facilities include 8 campsites, of which seven are tent only sites, and one vault toilet. Only electric motors are allowed on the lake. A fee is charged for overnight camping.

**Bull Prairie Lake Campground** - Located in a quite, natural setting, this campground consists of 28 tent/trailer sites, 16 day-use sites, a beautiful 28-acre lake for fishing, non-motorized boating, swimming and wildlife viewing, and a 1.14 mile handicap-accessible trail (most difficult level.) Restroom facilities and drinking water are provided. A fee is charged for overnight camping. Bull Prairie Campground can be found just off Oregon State Highway 207, approximately 36 miles south of Heppner, OR.

**North Fork John Day Campground** - Approximately 10 miles north of the historic town of Granite, Oregon, this campground sits along the Wild and Scenic North Fork John Day River and the Blue Mountain Scenic Byway. With 18 tent/trailer sites, horse handling facilities, and trail access into the North Fork John Day Wilderness, this area is popular with hikers and horseback riders. A fee is charged for overnight camping.

**Winom & Frazier Campgrounds** – These two campgrounds serve as the northern (Frazier) and southern (Winom) staging area for Winom-Frazier OHV Complex. The OHV complex offers more than 150 miles of challenging trails for Class I and Class III vehicles. This trail system is also open to hiking, horse and mountain bike use. A fee is charged for overnight camping. **At both campgrounds?**

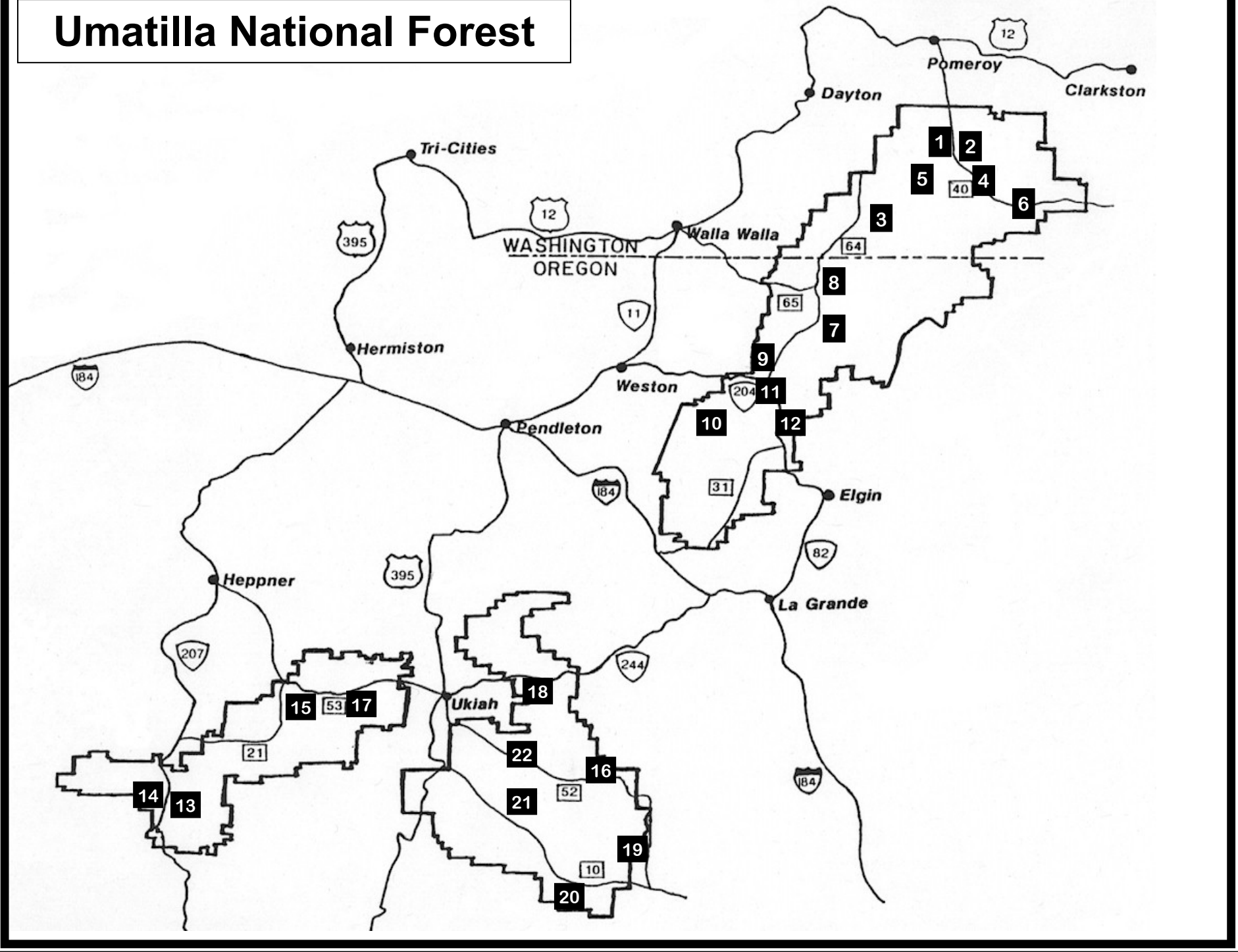
**Jubilee Lake Campground** - The largest and most popular campground on the Forest, Jubilee Lake has 51 campsites and 4 picnic areas. Nestled among the trees, the lake provides a beautiful setting for day-use activities including fishing, non-motorized boating and swimming as well as overnight camping. Jubilee Lake National Recreation Trail offers a pleasant 2.8 mile stroll around the lake, and, as with most of the facilities at the campground, is fully accessible to wheelchairs. A fee is charged for day-use and overnight camping.


**Umatilla Forks Campground** - Situated between the North Fork and South Fork of the Umatilla River, this campground offers much more than its 15 sites for overnight camping. Access to several trailheads provides routes throughout the North Fork Umatilla Wilderness with a variety of scenic views and trail difficulties to choose from. Fishing (catch and release only) is a popular activity from early spring to late fall. A fee is charged for overnight camping.

**Tucannon Campground** - Located on Forest Road #47, along the Tucannon River in Washington, this campground is popular from the opening of fishing season in early spring through the fall hunting seasons. Several ponds managed by the Washington Department of Wildlife, are located nearby and are stocked with trout, offering excellent fishing opportunities for the entire family. A fee is charged for overnight camping.

**Teal Campground** - Offering a spectacular view of the Tucannon drainage and the Wenaha-Tucannon Wilderness, this small but scenic campground is located on Forest Road #40. Many of the roads in the vicinity are popular scenic drives with day-hiking opportunities available. Sitting on a ridge at 5,600 feet elevation, this campground offers 5 quaint camping sites and is free of charge.

# Umatilla National Forest



Developed Sites	Map Locator #	Access	Elevation	Picnic Sites	Tent Sites	Tent/Trailer Sites	Fee	Drinking Water		Special Activities
<b>POMEROY RANGER DISTRICT</b>										
<b>Alder Thicket</b> 16 mi. S. of Pomeroy on F.R. 40	<b>1</b>	Hwy 12	5100		5		No	No		Hunting
<b>Big Springs</b> 26 mi. S. of Pomeroy on F.R. 42	<b>2</b>	Hwy 12	5000		6	2	No	No		Hunting
<b>Godman</b> 25 mi. S.E. of Dayton on F.R. 46	<b>3</b>	Hwy 12	6050		8		No	No		Hunting, Trailhead, Horse Facilities
<b>Teal Springs</b> 23 mi. S. of Pomeroy of F.R. 40	<b>4</b>	Hwy 12	5600		4	3	No	No		Hunting, View
<b>Tucannon</b> 20 mi. S. of Pomeroy on F.R. 47	<b>5</b>	Hwy 12	2600	5	10	5	Yes	No		Hunting, Fishing, Hiking
<b>Wickiup</b> 35 mi. S. of Pomeroy on F.R. 40 & 44	<b>6</b>	Hwy 12	5800	6	5		No	No		Hunting, View
<b>WALLA WALLA RANGER DISTRICT</b>										
<b>Jubilee Lake</b> 12 mi. N.E. of Tollgate on F.R. 64	<b>7</b>	Hwy 204	4800	37	4	47	Yes	Yes	Yes	Fishing, Boating, Swimming, Hiking, Trail Bike
<b>Mottet</b> 14 mi. N. of Tollgate on F.R. 64 & 6403	<b>8</b>	Hwy 204	5200	2		7	Yes	Yes		Hunting, Hiking
<b>Target Meadows</b> 2 mi. N. of Tollgate on F.R. 6401	<b>9</b>	Hwy 204	4800	6	4	16	Yes	Yes		Hunting, Hiking
<b>Umatilla Forks</b> 33 mi. E. of Pendleton on F.R. 32	<b>10</b>	Hwy 11/I-84	2400	16	7	8	Yes	Yes		Hunting, Hiking, Horse Trail, Trail Bike, Wilderness Access
<b>Woodland</b> 23 mi. E. of Weston on Hwy. 204	<b>11</b>	Hwy 204	5200	2		7	Yes	No		Hunting, Picnicking (no lake access)
<b>Woodward</b> 18 mi. E. of Weston on Hwy. 204	<b>12</b>	Hwy 204	4950	12		18	Yes	Yes		Trail Bike, Picnicking, Hiking
<b>HEPPNER RANGER DISTRICT</b>										
<b>Bull Prairie Lake</b> 36 mi. S. of Heppner on F.R. 2039	<b>13</b>	Hwy 207	4000	40	2	26	Yes	Yes	Yes	Fishing, Boating, Swimming, Hiking
<b>Fairview</b> 34 mi. S. of Heppner on Hwy. 207	<b>14</b>	Hwy 207	4300	3	1	4	No	No		Hunting
<b>Pendland Lake</b> 26 mi. S.E. of Heppner off F.R. 21	<b>15</b>	Hwy 207, Hwy395	4950	5	7	1	No	No		Fishing, Boating (electric motors only) swimming
<b>NORTH FORK JOHN DAY RANGER DISTRICT</b>										
<b>Big Creek</b> 22 mi. S.E. of Ukiah on F.R. 52	<b>16</b>	Hwy 244	5100			3	No	No		OHV, hunting Fishing, Hiking
<b>Divide Wells</b> 20 mi. W. of Ukiah on F.R. 5327-290	<b>17</b>	Hwy 244	4700		3	8	No	No		Hunting
<b>Frazier</b> 16 mi. E. of Ukiah on F.R. 5226	<b>18</b>	Hwy 244	4300	1		16	Yes	Yes	Yes	OHV, Hunting Hiking
<b>North Fork</b> 36 mi. S.E. of Ukiah on F.R. 52	<b>19</b>	Hwy 244	5200	3		14	Yes	No	Yes	Wilderness Access, Hiking Horse Trails, Hunting
<b>Olive Lake</b> 24 mi. S.E. of Dale on F.R. 10	<b>20</b>	Hwy 395	6000	2	2	21	Yes	No		Boating (electric motors only), fishing, swimming, hiking, hunting
<b>Oriental Creek</b> 24 mi. S.E. of Dale on F.R. 5506	<b>21</b>	Hwy 395	3500			7	No	No		Hunting, Hiking
<b>Winom Creek</b> 22 mi. S.E. of Dale on F.R. 52	<b>22</b>	Hwy 395	5000		3	5	No	No		OHV, Hiking