



Robbs Hut

Eldorado National Forest

Pacific Ranger District



Robbs Hut is a backcountry cabin located on Robbs Peak near Union Valley Reservoir in the Crystal Basin. At an elevation of 6686 feet, the Hut has a spectacular view of the Crystal Range in the Desolation Wilderness as well as the Sacramento Valley. Robbs Hut shares the mountaintop with Robbs Peak Lookout which was staffed by the Forest Service to spot forest fires from 1934 through 1978. Robbs Peak Lookout continues to be used for fire detection during emergencies and is open to the public for day use during the summer. **Use of the lookout is not included with Hut rental.** Popular activities include mountain biking, cross-country skiing and snowshoeing.

Important

Winter conditions can occur from September through June and may provide visitors with challenging weather in addition to affecting access and amenities. There is no vehicle access to the cabin in the winter.

Renters must contact the Pacific Ranger District at (530) 644-2349 to arrange for permit, access, check-in, and find out current conditions.

Amenities

Robbs Hut offers the most primitive cabin experience of all our cabins on the Eldorado. The hut is a basic two room building with the small kitchen and storage area on one side and the living and sleeping area in the larger room.

Parking: Vehicle access in summer only. Limited parking available at the trailhead in winter.

Sleeping: Three sleeping platforms with mattresses (3/4 width).

Heat & Lights: Propane fireplace with thermostat. Propane lights. **No electricity.**

Cooking: Apartment sized propane oven with four burner cook top. Some dishes, pots, and pans.

Water: Bring water with you.

Outdoor equipment: fire ring, two picnic tables, and a separate vault toilet building.

Location and Access

The Hut offers extremely different recreational experiences between summer and winter use.

Summer Season directions (July through September) - During the summer, most passenger vehicles can access the hut on the dirt road. To reach Robbs Hut:

- Highway 50 east 21 miles from Placerville (8.5 miles east of Pollock Pines).
- Left on Ice House Road north 23 miles.
- Turn left on Robbs Peak road (13N31).
- Go 2 miles on dirt road and turn right at the fork.
- Travel 2/3 of a mile to the locked gate (access provided at check-in), and continue 1/3 mile to hut.

Winter Season directions (October through June)- When snow covers the Sierra, the Hut can only be accessed by a 3 mile long ski/snowshoe uphill trek into the backcountry marked by blue diamonds. To reach Robbs trailhead:

- Highway 50 east 21 miles from Placerville (8.5 miles east of Pollock Pines).
- Left on Ice House Road north 23 miles to the Robbs Peak road (13N31) intersection. A plowed area is available for parking. Do not obstruct traffic or snow plows on Ice House road.

Because of the unpredictable weather and road conditions, there is no guaranteed access to Robbs Hut.

USDA is an equal opportunity provider and employer.



National Recreation Reservation Service

Toll-Free: 877-444-6777

TDD: 877-833-6777

INTL: 518-885-3639

Internet: www.Recreation.gov



- ◆ Reservations can be made from 4 days to 180 days in advance of your first night's stay by anyone 18 years or older.
- ◆ Maximum length of stay is 6 days.
- ◆ Fee: \$65.00 per night for up to 6 people.
- ◆ Fees may change at any time
- ◆ Expect to pay a reservation and cancellation fee when appropriate .
- ◆ No pets or smoking are allowed in the building.
- ◆ Check-out time is 1:00 pm, and check-in time is 2:00 pm.
- ◆ No refunds for bad weather unless Ice House Road is not passable.
- ◆ Availability is Year-round. **Winter use is recommended for experienced backcountry users only.**

Important!

- ❖ This trip is recommended for intermediate ability level or better skiers/snowshoers in excellent physical condition who are skilled in winter backcountry survival including navigation by map and compass or GPS.
- ❖ The party must be prepared to bivouac overnight in the snow in the event of emergency. Skiers will need climbing skins.
- ❖ **Depending on terrain conditions, the trip can take between 2 to 6 hours from trailhead to bunkhouse. Elevation gain is 1,000 feet in 3 miles. Depart from the trailhead no later than noon.**
- ❖ Robbs Peak Road is normally gated and locked at Ice House Road during the wet season, even when there is no snow. These conditions will require renters to hike three miles from their vehicle to the Hut.

Check-In

Renters must contact Pacific Ranger Station at 530-644-2349 **as far in advance as possible** to arrange for check-in, access, and to receive a current condition report. **Failure to do so will result in the cancellation of your reservation.**

Check-in is done in person at Pacific Ranger Station, 7887 Highway 50, Pollock Pines CA 95726. The Ranger Station is located 4 miles east of Pollock Pines on the north side of Highway 50 at the Mill Run turnoff. Pacific Ranger Station is open from 8:00 am to 4:30 pm 7 days a week during the summer. Call for off season business hours. Arrangements can be made for after hours check-in.

Road and Trail Conditions

Due to the remoteness of this area, you should be alert to changeable weather, road and trail conditions. Call the Pacific Ranger Station **before leaving home** for a current report.

Winter drastically changes the complexion of the Sierra Nevada and the Crystal Basin is no exception. Snow depths from a single storm can exceed two feet. Breaking trail on skis or snowshoes in deep snow conditions can be exhausting and roads can become impassable to all vehicles including 4WD. Be prepared to postpone your trip in the event of a storm rather than subject your group to unnecessary risk.

Roads are often icy and snow plowing is done on an intermittent basis by the Sacramento Municipal Utility District (SMUD). Ice House Road may not be plowed on weekends or holidays.

All vehicles including 4WD should carry chains and be serviced for cold temperatures. In the event that a storm could snow you in, be prepared to stay until the road is plowed. Carry a snow shovel to dig your vehicle out.

Route Finding



Even though the roads and the trail to Robbs Hut may be signed these should not be relied upon by travelers in this remote backcountry area. Natural events and storms can remove or obliterate signs and trail markers. You are responsible for finding your way by reading topographic maps and using a compass or GPS unit. The Robbs Hut Ski Trail map attached has GPS information in either UTM or latitude and longitude in degrees, minutes and seconds. Confirm that your GPS unit is using WGS 1984 datum.

Rental Specifics

- ◆ Be sure to take all remaining **food** with you when you leave, even unopened items. Boxes and packages of food attract mice. Cans of food will freeze, causing the seams to unseal and the contents to spoil.
- ◆ **Garbage will need to be packed out and taken home with you.**
- ◆ The propane fireplace is operated entirely from a wall thermostat above the couch. Turn the switch on the bottom to “on.” Set the desired temperature on the top. Be sure to turn the switch on the bottom to “off” when you leave. Pilot lights should be left lighted for the next guests.
- ◆ In backcountry facilities, renters are expected to clean up after themselves and prepare the hut for the next group. **Cleaning** supplies are available. Snow shovels are provided to clear the deck and entryways of snow.
- ◆ We recommend **water** be brought from home.
- ◆ No **open flames**, candles, backpacking stoves or Coleman stoves, etc., are permitted inside the building.
- ◆ **Pets** are not allowed in the building and are best left at home.
- ◆ **Smoking** is not allowed in the building.

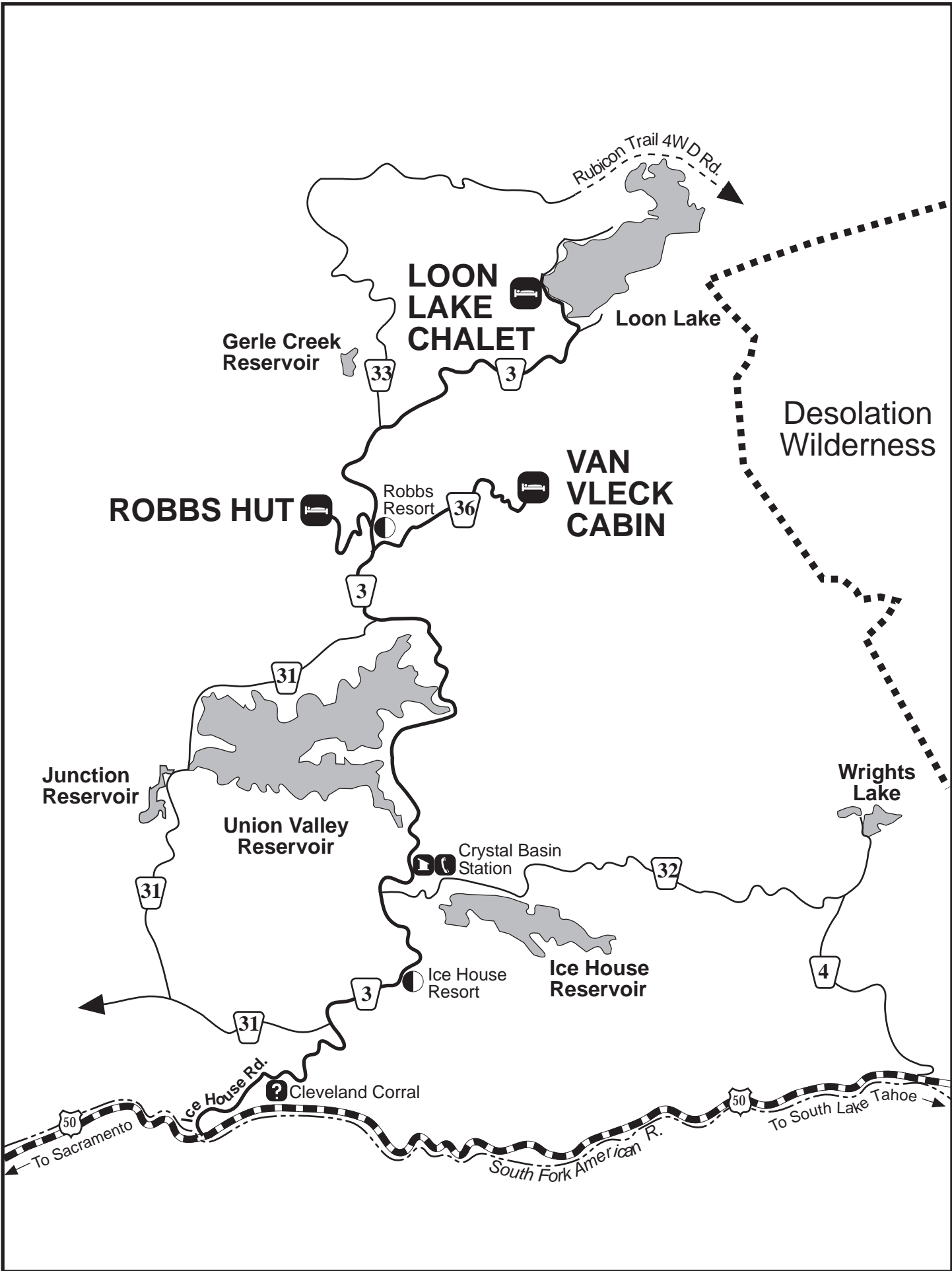
Things to Take With You

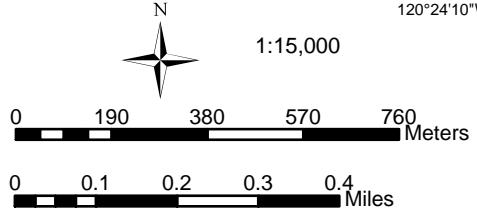
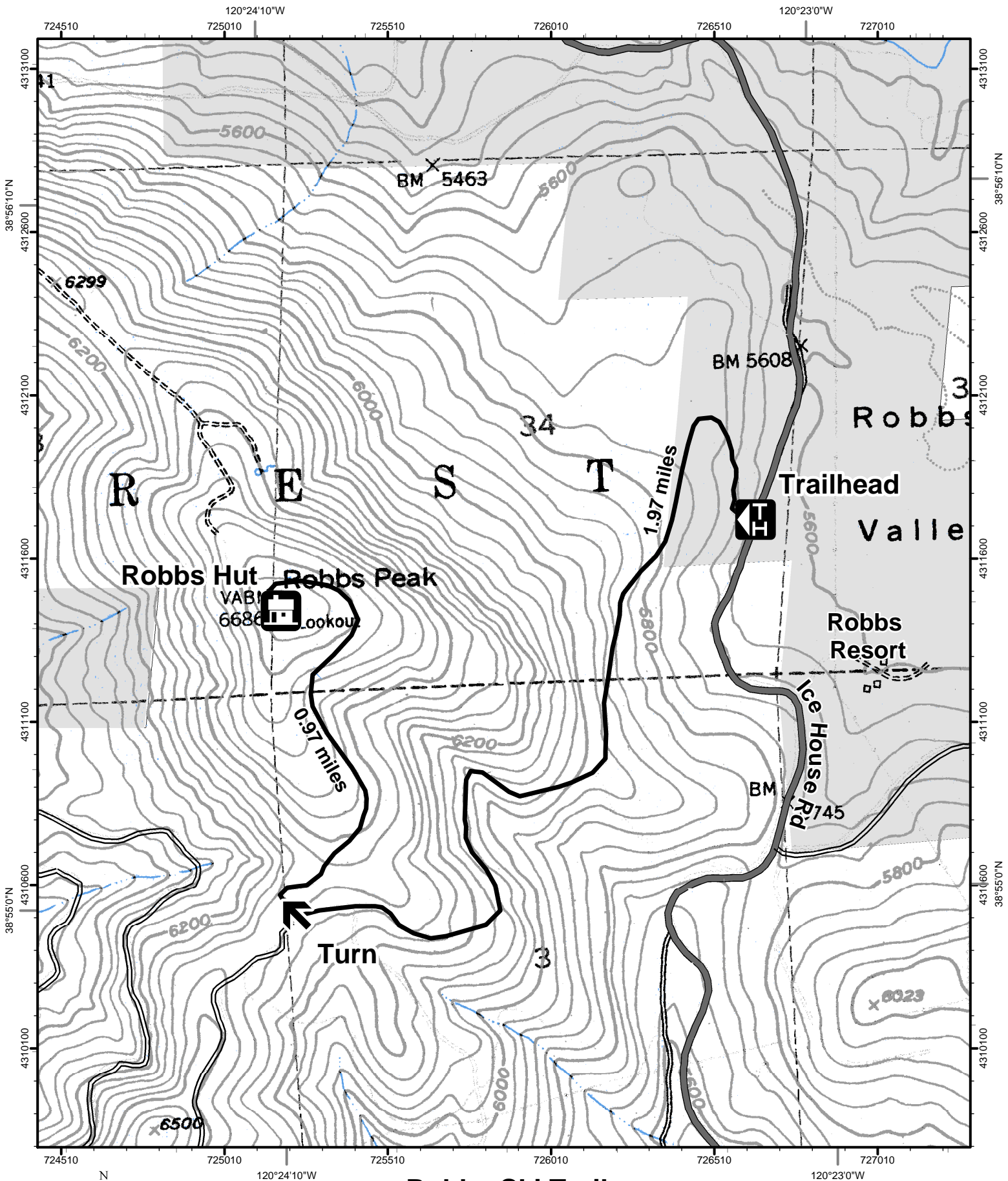
- ✓ Food
- ✓ Sleeping bag/bedding/towels
- ✓ Garbage bags
- ✓ Water
- ✓ Water Purification Device
- ✓ Cooking utensils (some are provided)
- ✓ Toilet paper and paper towels
- ✓ Map, compass, or GPS unit
- ✓ Sunscreen/sunglasses/hat
- ✓ Matches
- ✓ Flashlight
- ✓ First-aid supplies
- ✓ Climbing Skins (Winter)
- ✓ Tire chains and snow shovel for vehicle (winter)

Other Items

- ◆ It is a good idea to notify a responsible person of your planned stay at Robbs Hut and to check back with this person when you return. If you are overdue it is considered a search and rescue and the El Dorado County Sheriff's Department should be notified at (530) 626-4911.

Your cooperation with the rules of occupancy is essential to the continuation of the rental program. Failure to comply with the rules of occupancy can result in termination of your stay, forfeiture of rental fees and/or a citation. Unauthorized use of these facilities is a violation of both state and federal law. Violations are subject to a fine of \$5000 and/or up to 6 months imprisonment.





Robbs Ski Trail

Confirm that your
GPS is using:

WGS 1984 datum

**Universal Transverse Mercator
Degrees/Minutes/Seconds**

Trailhead	0726546mE	4311900mN
Turn	0725143mE	4310687mN
Robbs Hut	0725093mE	4311620mN
Trailhead	38°55'36.4"N	120°23'11.9"W
Turn	38°54'58.4"N	120°24'11.5"W
Robbs Hut	38°55'28.7"N	120°24'12.5"W