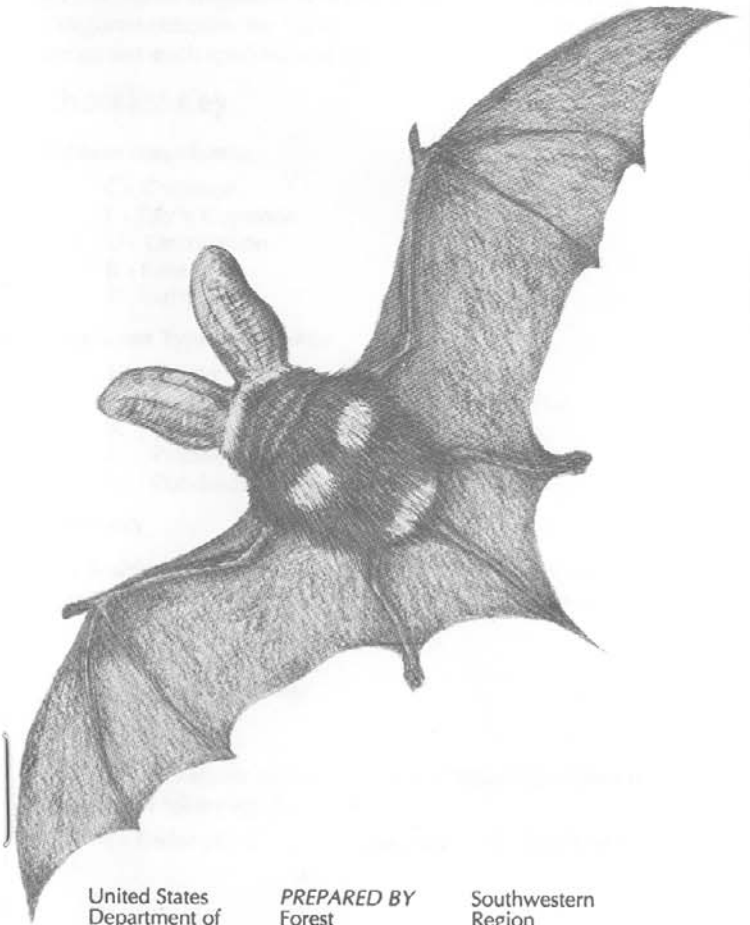


Gila National Forest
3005 E. Camino del Bosque
Silver City, NM 88061

Fish, Amphibians, Reptiles and Mammals ...

A Species Checklist for the Gila National Forest



United States
Department of
Agriculture

PREPARED BY
Forest
Service

Southwestern
Region

PRODUCED IN COOPERATION WITH
Southwestern New Mexico Audubon Society
& Department of Natural Science,
Western New Mexico University

Using the Checklist

Vegetation types on the Gila National Forest range from spruce/fir on the Mogollon Mountains and the Black Range, to Desert Scrub and remnant Grassland at lower elevations in the Burro Mountains. Ponderosa pine is the dominant species at mid-elevations, 6,000 to 7,000 feet. Piñon/juniper or oak/juniper/piñon woodland is found on drier sites throughout the Forest. This extreme range in elevation and the many corresponding vegetation types provide for a diverse fauna which includes 30 fish species, 11 amphibians, 44 reptiles and 84 mammals. Resident status is given only for migratory bats (see below). The remaining categories describe the habitat(s) where one is most likely to encounter each species, and specific habitat requirements.

Checklist Key

Relative Abundance

- C - Common
- F - Fairly Common
- U - Uncommon
- R - Rare
- X - Extirpated

Vegetation Type Preference

- | | |
|-------------------|---------------------|
| 1. Desert | 6. Spruce-Fir |
| 2. Oak Woodland | 7. Mt. Grassland |
| 3. Oak-Juniper | 8. Marsh/Open |
| 4. Piñon-Juniper | 9. Decid. Riparian |
| 5. Ponderosa Pine | 10. Conif. Riparian |

Residency

The Residence column is for bats only and lists the time of year each species normally appears in the checklist area.

- P - Permanent Resident
- S - Summer Resident
- W - Winter Resident

Federal Status

The particular status of species that are "listed" is shown in parenthesis following the name.

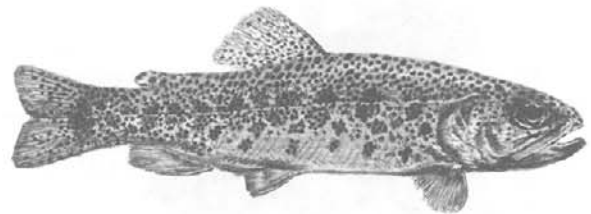
- E - Endangered
- T - Threatened
- S - Sensitive

Illustrations by Hank Pavlakovich

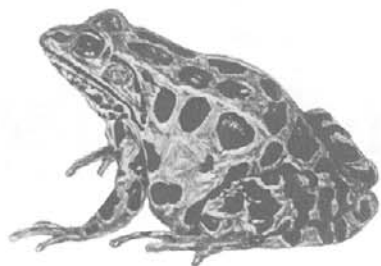
Revised and printed on recycled paper • 9/95

	Abundance	Residence	Desert	Oak Woodland	Oak-Juniper	Pinyon-Juniper	Ponderosa Pine	Spruce-Fir	Mt. Grassland	Marsh/Open	Decid. Riparian	Conif. Riparian
Fish												
Trout, Salmon, and Graylings												
Salmonidae												
— Gila Trout (E)	R											•
<i>Oncorhynchus gilae</i>												
— Rio Grande Cutthroat Trout (S)	R											•
<i>Oncorhynchus clarki virginalis</i>												
— Rainbow Trout	C											•
<i>Oncorhynchus mykiss</i>												
— Cutthroat Trout	F											•
<i>Oncorhynchus clarki</i>												
— Brown Trout	F											•
<i>Salmo trutta</i>												
Minnnows - Cyprinidae												
— Chihuahua Chub (E)	R											•
<i>Gila nigrescens</i>												
— Roundtail Chub (S)	F											•
<i>Gila robusta</i>												
— Spikedace (T)	R											•
<i>Meda fulgida</i>												
— Loach Minnow (T)	R											•
<i>Tiaroga cobitis</i>												
— Speckled Dace	C											•
<i>Rhinichthys osculus</i>												
— Longfin Dace	C											•
<i>Agosia chrysogaster</i>												
— Fathead minnow	U											•
<i>Pimephales promelas</i>												
— Red Shiner	F											•
<i>Cyprinella lutrensis</i>												
— Beautiful Shiner (E)	X											•
<i>Cyprinella formosa</i>												
— Carp	F											•
<i>Cyprinus carpio</i>												
Suckers												
Catostomidae												
— Desert Sucker	F											•
<i>Pantosteus clarki</i>												
— Rio Grande Sucker (S)	U											•
<i>Pantosteus plebeius</i>												
— Sonora Sucker	F											•
<i>Catostomus insignis</i>												

	Abundance	Residence	Desert	Oak Woodland	Oak-Juniper	Pinyon-Juniper	Ponderosa Pine	Spruce-Fir	Mt. Grassland	Marsh/Open	Decid. Riparian	Conif. Riparian
Catfish - Ictaluridae												
— Channel Catfish	F											•
<i>Ictalurus punctatus</i>												
— Black Bullhead	U											•
<i>Ictalurus melas</i>												
— Yellow Bullhead	F											•
<i>Ictalurus natalis</i>												
— Flathead Catfish	F											•
<i>Pylodictis olivaris</i>												
Topminnows - Poeciliidae												
— Gila Topminnow (E)	X											•
<i>Poeciliopsis occidentalis</i>												
— Mosquitofish	C											•
<i>Gambusia affinis</i>												
Sunfishes												
Centrarchidae												
— Smallmouth Bass	C											•
<i>Micropterus dolomieu</i>												
— Largemouth Bass	U											•
<i>Micropterus salmoides</i>												
— Bluegill	C											•
<i>Lepomis macrochirus</i>												
— Green Sunfish	C											•
<i>Lepomis cyanellus</i>												
— Longear Sunfish	U											•
<i>Lepomis megalotis</i>												
— White Crappie	F											•
<i>Pomoxis annularis</i>												



	Abundance	Residence	Desert	Oak Woodland	Oak-Juniper	Pinyon-Juniper	Ponderosa Pine	Spruce-Fir	Mt. Grassland	Marsh/Open	Decid. Riparian	Conif. Riparian
Amphibians												
Salamanders												
Ambystomatidae												
— Tiger Salamander	C										•	
<i>Ambystoma tigrinum</i>												
Spadefoot Toads												
Pelobatidae												
— New Mexico Spadefoot	C		•	•	•							
<i>Scaphiopus multiplicatus</i>												
Toads												
Bufo												
— Woodhouse's Toad	C				•						•	
<i>Bufo woodhousii</i>												
— Southwestern Toad	F				•	•						
<i>Bufo microscaphus</i>												
— Red-spotted Toad	F				•	•	•					
<i>Bufo punctatus</i>												
Hylid Frogs												
Hylidae												
— Western Chorus Frog	F					•	•					
<i>Pseudacris triseriata</i>												
— Mountain Treefrog	F					•	•					
<i>Hyla eximia</i>												
— Canyon Treefrog	F				•	•	•					•
<i>Hyla arenicolor</i>												
Frogs - Ranidae												
— Bullfrog	C									•	•	
<i>Rana catesbeiana</i>												
— Chiricahua Leopard Frog	R				•	•					•	
<i>Rana chiricahuensis</i>												
— Lowland Leopard Frog	R									•		
<i>Rana yavapaiensis</i>												



	Abundance	Residence	Desert	Oak Woodland	Oak-Juniper	Pinyon-Juniper	Ponderosa Pine	Spruce-Fir	Mt. Grassland	Marsh/Open	Decid. Riparian	Conif. Riparian
Reptiles												
Turtles - Kinosternidae												
— Sonora Mud Turtle	F										•	•
<i>Kinosternon sonoriense</i>												
Box Turtles												
Testudinidae												
— Ornate Box Turtle	F		•	•	•							
<i>Terrapene ornata</i>												
Softshell Turtle												
Trionychidae												
— Spiny Softshell	R										•	•
<i>Trionyx spiniferus</i>												
Beaded Lizards												
Helodermatidae												
— Gila Monster	R		•	•								
<i>Heloderma suspectum</i>												
Geckos												
Gekkonidae												
— Western Banded Gecko	U		•	•								
<i>Coleonyx variegatus</i>												
Iguanas												
Iguanidae												
— Collared Lizard	F			•	•							
<i>Crotaphytus collaris</i>												
— Lesser Earless Lizard	F		•									
<i>Holbrookia maculata</i>												
— Greater Earless Lizard	C			•	•							
<i>Cophosaurus texanus</i>												
— Crevice Spiny Lizard	F			•	•	•	•					
<i>Sceloporus poinsettii</i>												
— Eastern Fence Lizard	C		•	•	•	•						
<i>Sceloporus undulatus</i>												
— Clark's Spiny Lizard	F			•	•							•
<i>Sceloporus clarkii</i>												
— Plateau Lizard	F				•	•						
<i>Sceloporus virgatus</i>												
— Desert Spiny Lizard	F				•							
<i>Sceloporus magister</i>												
— Tree Lizard	C		•	•	•	•	•					
<i>Urosaurus ornatus</i>												
— Short-horned Lizard	C			•	•	•		•				
<i>Phrynosoma douglassii</i>												

	Abundance	Residence	Desert	Oak Woodland	Oak-Juniper	Pinyon-Juniper	Ponderosa Pine	Spruce-Fir	Mt. Grassland	Marsh/Open	Decid. Riparian	Conif. Riparian
— Texas Horned Lizard <i>Phrynosoma cornutum</i>	U		•									
— Round-tailed Lizard <i>Phrynosoma modestum</i>	U		•									
Skinks												
Scincidae												
— Many-lined Skink <i>Eumeces multivirgatus</i>	U					•	•					
— Great Plains Skink <i>Eumeces obsoletus</i>	F			•	•	•						
Teids (Whiptails)												
Teiidae												
— Chihuahuan Spotted Whiptail <i>Cnemidophorus exsanguis</i>	F					•	•					
— Desert-grassland Whiptail <i>Cnemidophorus uniparens</i>	C		•	•	•	•						
— Western Whiptail <i>Cnemidophorus tigris</i>	C		•	•								
— Gila Spotted Whiptail <i>Cnemidophorus flagellicaudus</i>	F				•	•	•					
Anguids - Anguidae												
— Madrean Alligator Lizard <i>Elgaria kingii</i>	F				•	•						
Slender Blind Snakes												
Leptotyphlopidae												
— Texas Blind Snake <i>Leptotyphlops dulcis</i>	R				•	•						
— Western Blind Snake <i>Leptotyphlops humilis</i>	U		•	•	•							
Colubrids - Colubridae												
— Black-necked Garter Snake <i>Thamnophis cyrtopsis</i>	C										•	
— Narrowhead Garter Snake <i>Thamnophis rufipunctatus</i>	U									•	•	
— Checkered Garter Snake <i>Thamnophis marciatus</i>	F										•	
— Western Terrestrial Garter Snake <i>Thamnophis elegans</i>	C										•	•
— Striped Whipsnake <i>Masticophis taeniatus</i>	C				•	•						
— Ring-necked Coachwhip Snake <i>Masticophis flagellum</i>	C		•	•								

	Abundance	Residence	Desert	Oak Woodland	Oak-Juniper	Pinyon-Juniper	Ponderosa Pine	Spruce-Fir	Mt. Grassland	Marsh/Open	Decid. Riparian	Conif. Riparian
— Bull Snake <i>Pituophis melanoleucus</i>	C		•	•	•	•						
— Big Bend Patchnose Snake <i>Salvadora deserticola</i>	F			•	•							
— Mountain Patchnose Snake <i>Salvadora grahamiae</i>	U					•						
— Plains Blackhead Snake <i>Tantilla nigriceps</i>	U		•	•	•							
— Southwestern Blackhead Snake <i>Tantilla hobartsmithi</i>	R		•	•	•							
— Common Kingsnake <i>Lampropeltis getulus</i>	U			•	•	•						
— Sonora Mountain Kingsnake <i>Lampropeltis pyromelana</i>	U					•	•	•				
Coral Snakes - Elapidae												
— Arizona Coral Snake <i>Micruroides euryxanthus</i>	R			•	•							
Pit Vipers - Crotalidae												
— Black-tailed Rattlesnake <i>Crotalus molossus</i>	C				•	•	•	•				
— Western Diamond-backed Rattlesnake <i>Crotalus atrox</i>	C		•	•	•							
— Western Rattlesnake <i>Crotalus viridis</i>	C		•	•	•	•	•					
— Rock Rattlesnake <i>Crotalus lepidus</i>	U				•	•	•					

