



**UNITED STATES DEPARTMENT OF AGRICULTURE
FOREST SERVICE
COCONINO NATIONAL FOREST, FLAGSTAFF RANGER DISTRICT**

**Occupancy and Use Prohibition:
Flagstaff Area Camping and Campfire Prohibition**

PROHIBITIONS

Pursuant to 16 U.S.C. § 551 and 36 C.F.R. § 261.50(a) and (b), the following is prohibited on the National Forest System (NFS) lands in the Flagstaff Ranger District, Coconino National Forest, described below and shown on the attached map incorporated into this Order as Exhibit A (the "Described Area"):

1. Igniting, building, maintaining, or using a fire, including charcoal and briquettes, outside a fire structure that is provided by the Forest Service. **36 C.F.R. § 261.52(a)**
2. Camping. **36 C.F.R. § 261.58(e)**

DEFINITIONS

Fire Structure: A permanent metal or concrete structure, which is specifically designed for the purpose of containing a campfire or cooking fire that has been installed and maintained by the Forest Service.

EXEMPTIONS

Pursuant to 36 C.F.R. §261.50(e), the following persons are exempt from this Order:

1. Persons with Forest Service Permit No. FS-7700-48 (Permit for Use of Roads, Trails, or Areas Restricted by Regulation or Order), specifically exempting them from this Order or a written determination by a Forest Service authorized officer that a permit is not required under 36 C.F.R. § 251.50(e)(1) or (2).
2. Any Federal, State, or Local Officer, or member of an organized rescue or firefighting resource in the performance of an official duty.

3. Persons within the developed campgrounds identified in Exhibit A (Canyon Vista and Little Elden Spring Horse Camp campgrounds).
4. Persons using a stove or grill that is solely fueled by pressurized liquid petroleum fuels.

DESCRIBED AREA

The Described Area as depicted on the map in Exhibit A, includes all NFS lands within the boundary starting at the intersection of Interstate 17 (I-17), NFS Road (NFSR) 236C (Mountaineer Road), and the private property land boundary, then following north then west along the private property boundary to the intersection of NFSR 533B, then following north on NFSR 533B to NFSR 533, then following north on NFSR 533 to the intersection of NFSR 68, then following north on NFSR 68 to the intersection of NFSR 231, then following west for 2.2 miles on NFSR 231 to NFSR 526A at the section line between T21N R6E, Section 32 and 33, then following north along the section line for approximately 3.8 miles to the intersection of Interstate 40 (I-40), then following east along I-40 for approximately one mile to the intersection of NFSR 9228Q, then following east on NFSR 9228Q to the intersection of NFSR 518, then following northeast along NFSR 518 to the intersection with NFSR 518C, then following north on NFSR 518C to the private property and forest boundary, then following the forest boundary east and north to the intersection with U.S. Highway 180, then following west along Highway 180 to the intersection of NFSR 516 (Snowbowl Road), then following north on NFSR 516 and 100 feet from its centerline west and east, to its terminus in T23N, R6E, Section 36, then, from the intersection of NFSR 516 and NFSR 522 (Freidlein Prairie Road), following east on NFSR 522 and 100 feet north from the centerline for approximately ¼ mile to the Kachina Peaks Wilderness Boundary, then following the Kachina Peaks Wilderness Boundary east for approximately 5.7 miles to the intersection with Weatherford Canyon, then following Weatherford Canyon southeast to the intersection with NFSR 743, then following east on NFSR 743 to the intersection with NFSR 420 (Schultz Pass Road), then following in a generally northeast direction along NFSR 420 for approximately 5.4 miles to the intersection with NFSR 9126E, then following NFSR 9126E, then NFSR 9141U, then NFSR 414, then following south on NFSR 414 to the intersection with NFSR 9142V, then following south on NFSR 9142V to the intersection with NFSR 776, then following east on NFSR 776 to the Cinder Hills OHV area boundary, then following the Cinder Hills OHV boundary south and east to the intersection with NFSR 498, then following south on NFSR 498 to the intersection with NFSR 511A, then following south on NFSR 511A to the junction of NFSR 511 (Hutton Ranch Road), then following south on NFSR 511 to the intersection with Coconino County (COC) 510 (Townsend-Winona Road), then following southeast along COC-510 to latitude 35° 13' 5.29" N by longitude 111° 26' 40.11" W, then following south to latitude 35° 13' 1.60" N by longitude 111° 26' 40.09" W to the intersection with the Burlington-Northern/Santa Fe Railroad (BNSF RR), then following the Burlington-Northern/Santa Fe Railroad southwest to the intersection with COC-510C (Cosnino Road), then following south along COC-510C to the intersection of I-40, then following east along I-40 for approximately 3 miles to the private property/forest boundary, T21N,

R9E, Section 15, then following southwest along the forest boundary to the intersection with the boundary of Walnut Canyon National Monument, then following the Walnut Canyon National Monument Boundary perimeter mostly west then turning south, for approximately 8.3 miles, then following the southern section line of T21N, R8E, section 33, to the intersection with the 6700-foot contour line, then following the contour line west and then south to the intersection with the east boundary section line in T20N, R7E, Section 12, (35° 7' 45.01" N, 111° 35' 51.68"), then following south along the section line boundaries in sections 12 and 13 to the intersection with COC-3 (FH-3, Lake Mary Road), then following northwest along COC-3 for approximately 2.3 miles to the intersection of NFSR 867, then following in a generally southern then northwestern direction along NFSRS 867, 867D, 867A, 867, 762D, 762B, 235, 235A, 235H, 235K, 700, and 236C, back to the point of beginning at the intersection of NFSR 236C and I-17.

PURPOSE

The purpose of this Order is to protect public health and safety from the threat of human caused wildfire.

IMPLEMENTATION

1. This Order shall be in effect on May 1, 2023, at 08:00 AM, and shall remain in effect until April 30, 2025, at 08:00 AM, unless rescinded.
2. A map identifying the Described Area is attached and made part of this Order as Exhibit A. For a digital version of this Order and Exhibit A, go to <https://www.fs.usda.gov/alerts/coconino/alerts-notice>.
3. Unless otherwise expressly defined in this Order, the terms used in this Order are defined by the regulations of the Secretary of Agriculture, 36 C.F.R. Chapter II, Parts 200-299. If there are terms in this Order that are not expressly defined in the Order or 36 C.F.R. Chapter II, Parts 200-299, their meaning shall be determined by their plain language definitions.
4. A violation of the above prohibitions is punishable as a Class B misdemeanor by a fine of not more than \$5,000 for individuals and \$10,000 for organizations, or by imprisonment for not more than six months, or both. 16 U.S.C. § 551; 18 U.S.C. §§ 3559, 3571, and 3581.
5. Contact the Flagstaff Ranger District in Flagstaff, Arizona (928) 526-0866 or the Coconino National Forest Supervisor's Office in Flagstaff, Arizona, (928) 527-3600 for more information about this Order.
6. This Order supersedes any previous Orders prohibiting the same or similar acts in the same Described Area.

Signed and issued on April 28, 2023.



Digitally signed by AARON
MAYVILLE
Date: 2023.04.28 15:56:45
-07'00'

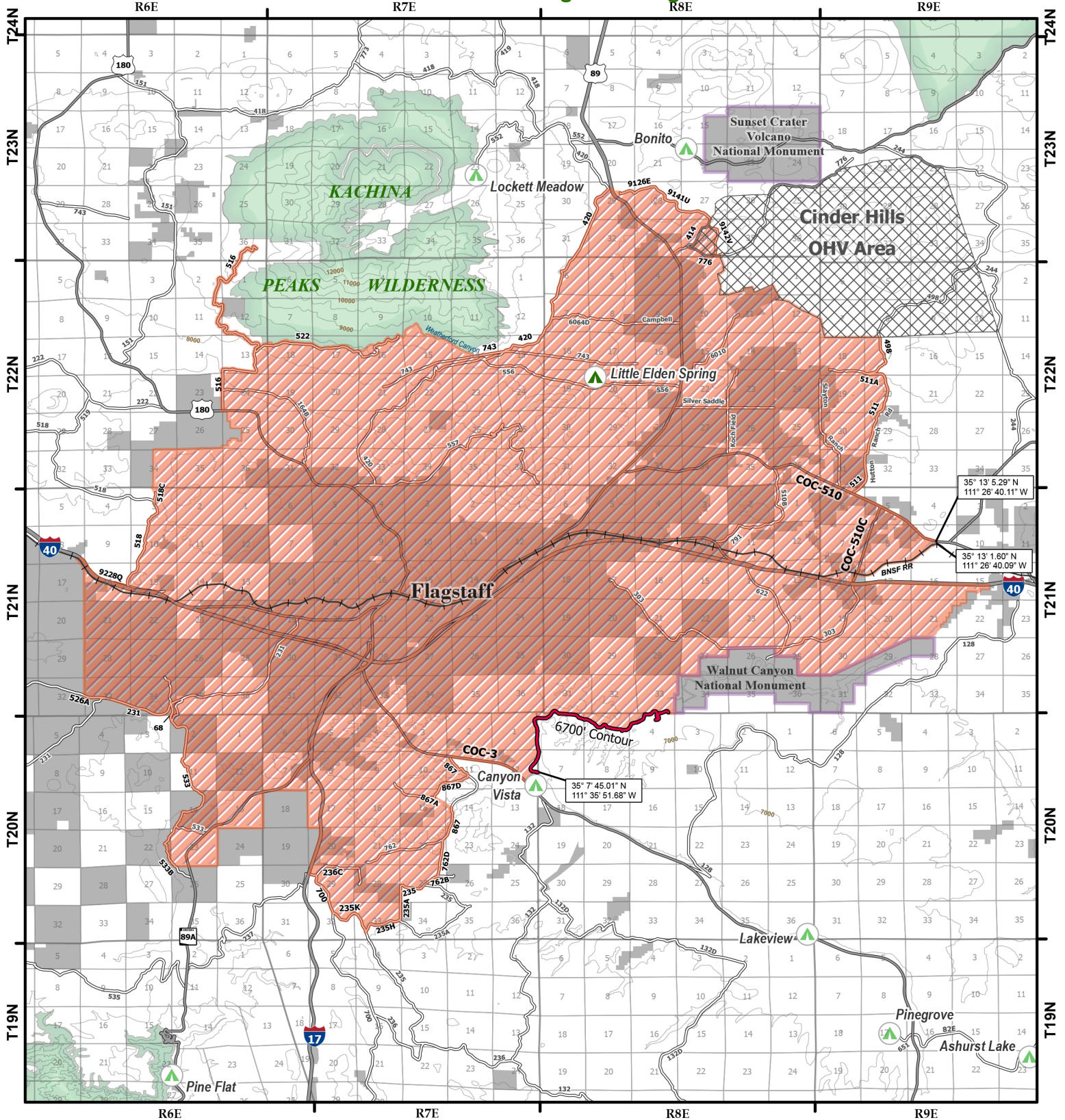
Aaron Mayville
Forest Supervisor
Coconino National Forest



Flagstaff Area Camping and Campfire Restrictions

Exhibit: A

Coconino National Forest - Flagstaff Ranger District



Forest Order Information

Order Number: 03-04-08-23-10
Start Date: May 1, 2023
End Date: May 1, 2025

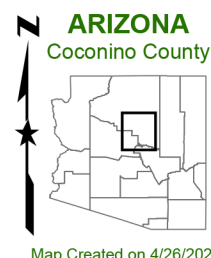
Disclaimer

The USDA Forest Service makes no warranty, expressed or implied regarding the data displayed on this map, and reserves the right to correct, update, modify, or replace this information without notification.

Legend

- Described Area
- Campground
- Horse Camp
- Non-National Forest System Lands
- Wilderness Area Boundary
- Cinder Hills OHV Area
- BNSF Railroad
- 6700' Contour line

0 1 2 4 6 8 Miles



Map Created on 4/26/2023