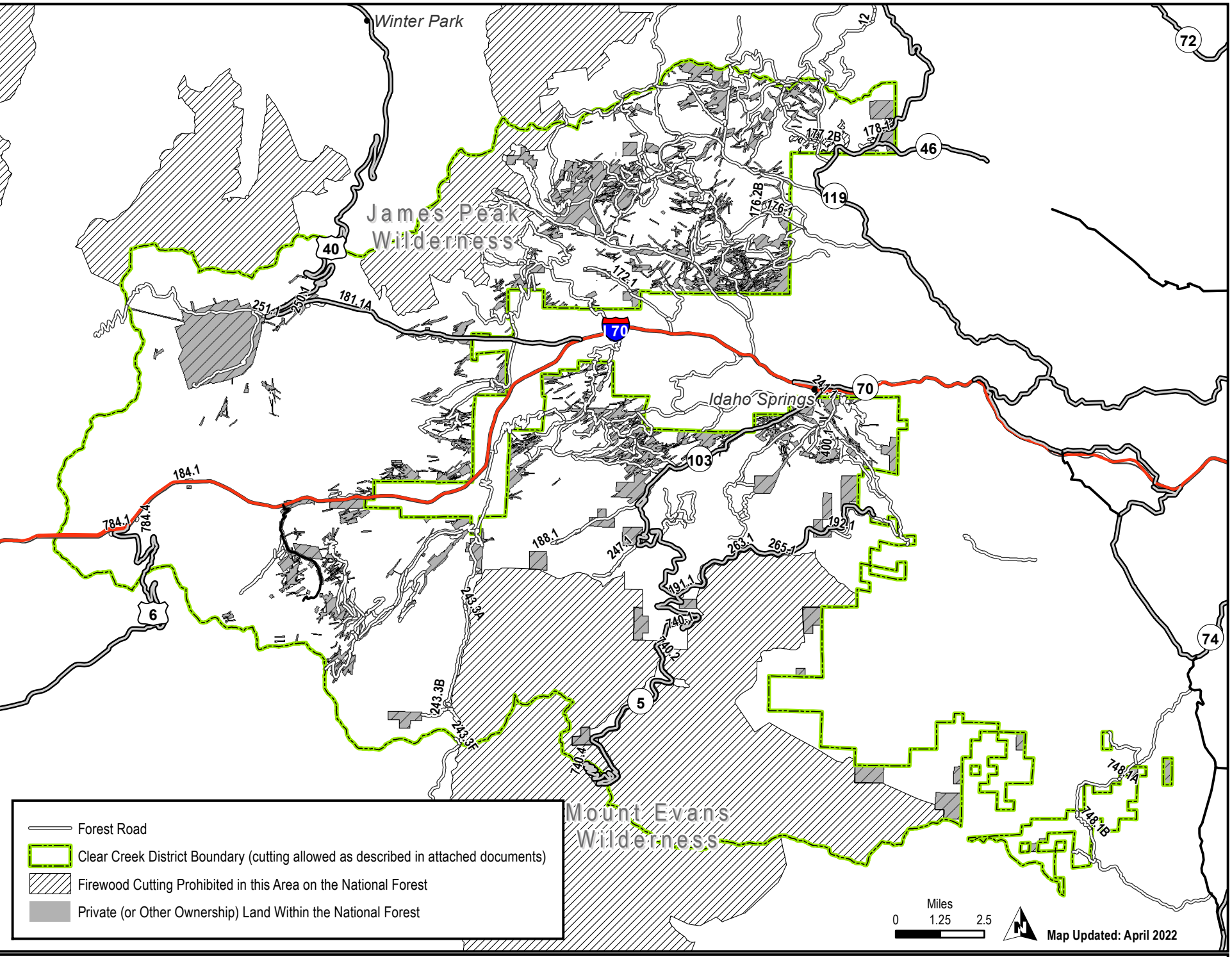


Firewood Cutting Areas - Clear Creek

USDA Forest Service
Roosevelt National Forest
Clear Creek Ranger District



- Forest Road
- ▭ Clear Creek District Boundary (cutting allowed as described in attached documents)
- ▨ Firewood Cutting Prohibited in this Area on the National Forest
- ▭ Private (or Other Ownership) Land Within the National Forest

Miles
0 1.25 2.5
Map Updated: April 2022

DISCLAIMER: This product is reproduced from geospatial data prepared by the USDA Forest Service. Geospatial data and product accuracy may vary. Using geospatial data and products for purposes other than those for which they were created may yield inaccurate or misleading results. The USDA Forest Service reserves the right to correct, update, modify, or replace geospatial data and products without notification. For more information contact the Arapaho/Roosevelt National Forest Supervisors Office at (970) 295-6600.