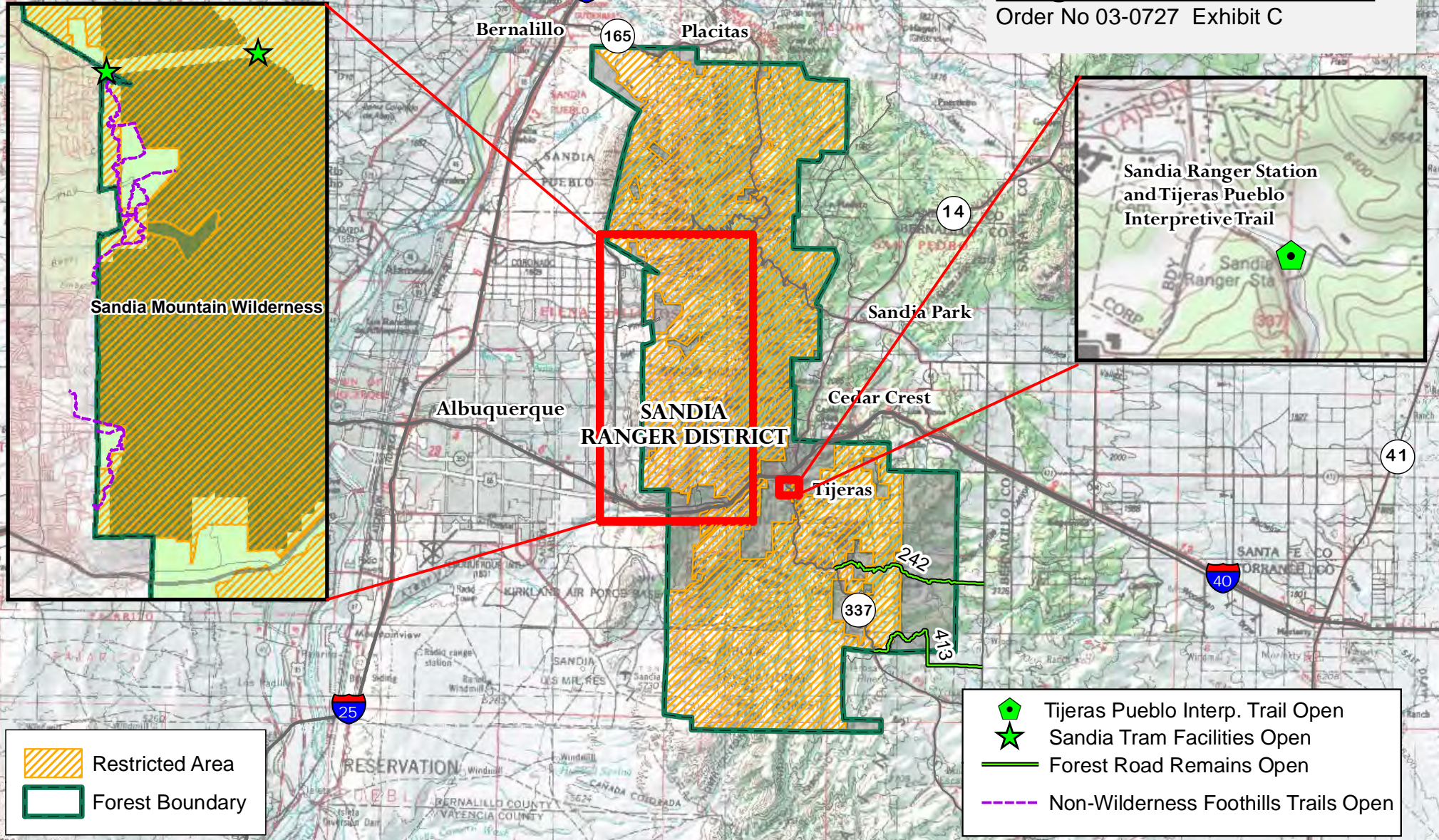


Stage III Forest Closure

Order No 03-0727 Exhibit C



Restricted Area
 Forest Boundary

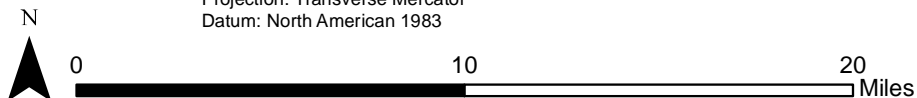
Tijeras Pueblo Interp. Trail Open
 Sandia Tram Facilities Open
 Forest Road Remains Open
 Non-Wilderness Foothills Trails Open

Coordinate System: NAD 1983 UTM Zone 13N
 Projection: Transverse Mercator
 Datum: North American 1983

Date: 5/18/2022

Data Sources:

USDA is an equal opportunity provider, employer, and lender.



This product is reproduced from geospatial information prepared by the USDA Forest Service. Geospatial information and GIS product accuracy may vary. Using GIS products for purposes other than those for which they were created may yield inaccurate or misleading results. USDA Forest Service reserves the right to correct, update, modify or replace GIS products without notification