

FOREST ORDER NO. 0513-22-07

**SEQUOIA NATIONAL FOREST
GIANT SEQUOIA NATIONAL MONUMENT
WESTERN DIVIDE RANGER DISTRICT**

FIRE RECOVERY AND PUBLIC SAFETY CLOSURE

Pursuant to 16 U.S.C. § 551 and 36 C.F.R. § 261.50(a) and (b), and to provide for public safety and protect natural resources, the following acts are prohibited within the Western Divide Ranger District of the Sequoia National Forest. This Forest Order is effective from June 10, 2022, through December 31, 2022.

1. Going into or being upon National Forest System lands within the Fire Recovery Closure Area, as described in Exhibit A and shown on Exhibit B, or within the following dispersed camping areas, as shown on Exhibit C.
 - a. Camps 1, 2, 3, 4, and 6.
 - b. The portion of Camp 5 within the Camp 5 Dispersed Camp Closure Area, which begins 0.3 miles southeast of the intersection of South Peppermint Road (Forest Road No. 22S82H) and Lloyd Meadow Road (Forest Road No. 22S82), then continues southwest within 200 feet of South Peppermint Road to its terminus.
 - c. The portion of Upper Peppermint within the Upper Peppermint Dispersed Camp Closure Area, as described in Exhibit A and shown on Exhibit C.

36 C.F.R. § 261.53(e)

2. Being on any National Forest System Road listed below and shown on Exhibits B, C, and D.
 - a. Any National Forest System Road within the Fire Recovery Closure Area described in Exhibit A and shown on Exhibit B.
 - b. South Fork Peppermint Spur Road (Forest Road No. 21S07A).
 - c. South Peppermint Road (Forest Road No. 22S82H) starting 0.3 miles southeast of the intersection with Lloyd Meadow Road (Forest Road No. 22S82) then continuing southwest to its terminus.
 - d. Peppermint Falls Road (Forest Road No. 22S82F).
 - e. Parent Camp Road (Forest Road No. 22S45).
 - f. Camp 2 Area Road (Forest Road No. 22S69).
 - g. Camp 3 Area Road (Forest Road No. 22S70).
 - h. Elephant Camp Road (Forest Road No. 22S56).
 - i. Bone Creek Road (Forest Road No. 22S59).
 - j. North Road from the gate above Freeman Creek TH to its terminus at Summit Creek. TH (Forest Road No. 21S50, 21S50A, 21S50B, 21S50C, and 21S50D).
 - k. Woody's Road (Forest Road No. 21S99).
 - l. White Meadow Road (Forest Road No. 20S68 and 20S68A).
 - m. Jordan Peak Lookout Road (Forest Road No. 20S71 and 20S71A).
 - n. Log Cabin Road (Forest Road No. 20S81, 20S81A, and 20S81B).
 - o. Clicks Creek Road (Forest Road No. 20S64, 20S64A, and 20S64B).
 - p. Loggy Meadow Road (Forest Road No. 20S53).
 - q. Fisher Road (Forest Road No. 20S63).
 - r. Fish Creek Road (Forest Road No. 20S79, 20S79A, 20S79B, 20S79C, and 20S79D).
 - s. Smith-Failing Meadow Road (Forest Road No. 20S73).
 - t. Garland Road (Forest Road No. 20S74 and 20S74A).
 - u. Deep Meadow Road (Forest Road No. 20S75, 20S75A, 20S75B, 20S75C, and 20S75D).
 - v. Wheel Road (Forest Road No. 20S85).
 - w. Castle Road (Forest Road No. 20S86).

- x. Sequoia SStars (Forest Road No. 20S98).
- y. Coffee Mill Road (Forest Road No. 20S44).
- z. View Road (Forest Road No. 20S56 and 20S56A).
- aa. Needles Lookout Road (Forest Road No. 21S05 and 21S05B).
- bb. Izzy Road (Forest Road No. 21S49 and 21S49A).
- cc. Ponderosa Road (Forest Road No. 21S54C).
- dd. Quaker O.C. Road (Forest Road No. 21S78).
- ee. Freeman Creek Grove Road (Forest Road No. 20S78 and 21S78A).

36 C.F.R. § 261.54(e)

3. Being on any National Forest System trail listed below and shown on Exhibits B, C, and D.
- a. Any National Forest System trail within the Fire Recovery Closure Area described in Exhibit A and shown on Exhibit B.
 - b. President George Bush Tree Loop Trail.
 - c. Summit Trail from its intersection with Hwy 190 to the Golden Trout Wilderness Boundary (Forest Trail No. 31E14).
 - d. Deer Trail (Forest Trail No. 32E17).
 - e. Hossack Trail (Forest Trail No. 31E24).
 - f. Jordan Lookout Trail (Forest Trail No. 31E25).
 - g. Lewis Camp Trail from its intersection with the Summit Trail to the Golden Trout Wilderness Boundary (Forest Trail No. 33E01).

36 C.F.R. § 261.55(a)

Pursuant to 36 C.F.R. § 261.50(e), the following persons are exempt from this Order:

- 1. Any Federal, State, or local officer, or member of an organized rescue or fire-fighting force in the performance of an official duty.
- 2. Persons with Forest Service Permit No. FS-7700-48 (Permit for Use of Roads, Trails, or Areas Restricted by Regulation or Order), specifically exempting them from this Order.
- 3. Owners or lessees of land, and residents of such private landholdings, to the extent necessary to access their land. Recreation residence permit holders are not exempt from the prohibitions above.

A violation of these prohibitions is punishable by a fine of not more than \$5,000 for an individual or \$10,000 for an organization, or imprisonment for not more than six months, or both.

16 U.S.C. § 551 and 18 U.S.C. §§ 3559, 3571, and 3581.

Executed in Porterville, California this 8th day of June 2022.



TERESA BENSON
Forest Supervisor
Sequoia National Forest

FOREST ORDER NO. 0513-22-07

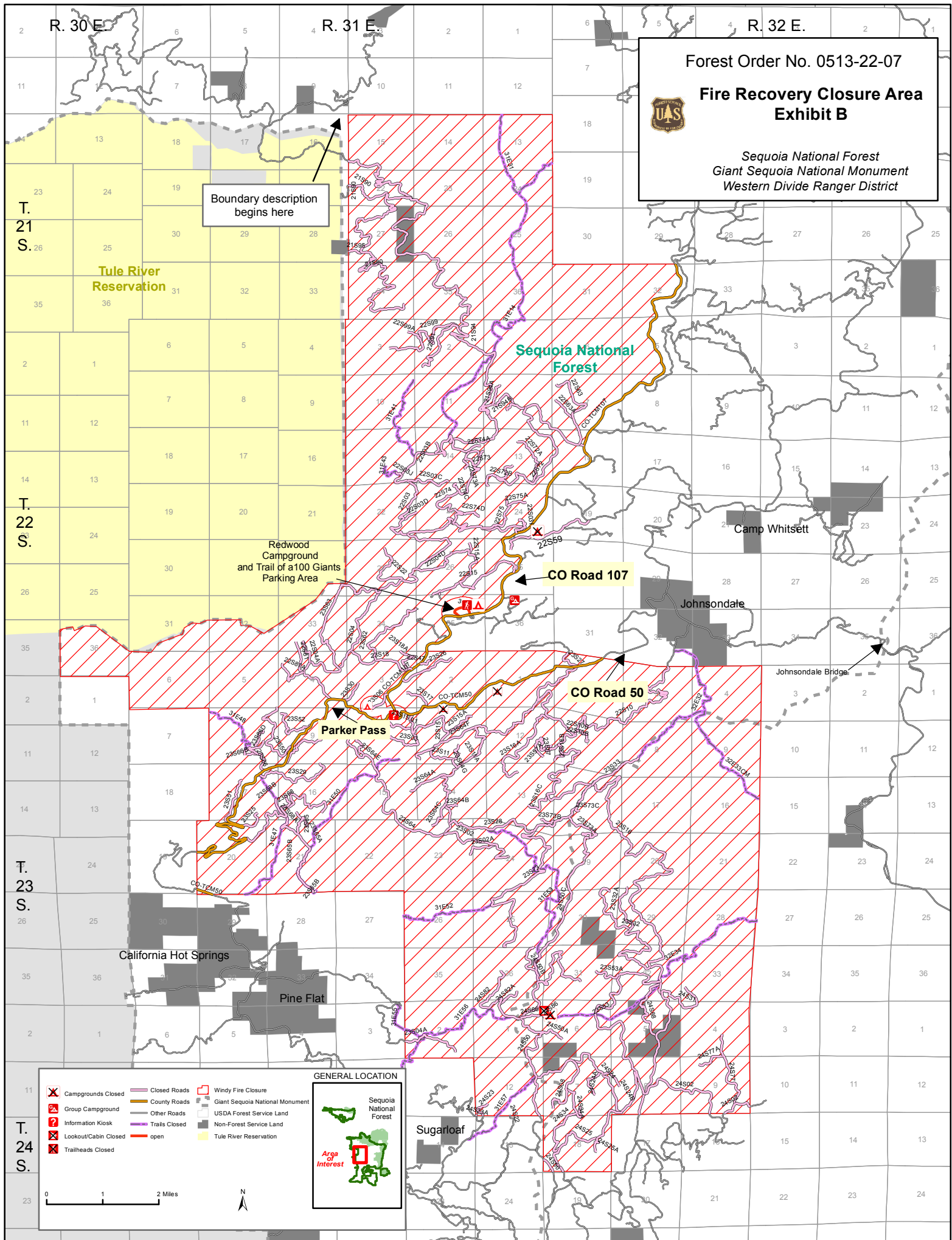
SEQUOIA NATIONAL FOREST GIANT SEQUOIA NATIONAL MONUMENT WESTERN DIVIDE RANGER DISTRICT

FIRE RECOVERY AND PUBLIC SAFETY CLOSURE

EXHIBIT A

The boundary of the Fire Recovery Closure Area begins in the northwest corner of Section 15, Township 21 South, Range 31 East, Mount Diablo Base & Meridian (MDB&M), then continues due east approximately 3 miles to its intersection with the northeast corner of Section 13, then continues due south approximately 2.5 miles to its intersection with the northwest corner of Section 31, T.21S., R.32E., MDB&M, then continues due east approximately 2 miles to its intersection with the southeast corner of Section 28, then continues due north approximately 2 miles to its intersection with county road M107, then follows the road approximately 11.2 miles to its intersection with the northwest corner of Section 2, T.22S, R.31E., MDB&M, then continues due east approximately 5 miles to its intersection with the northeast corner of Section 4, T.23S, R.32E., MDB&M, then continues approximately 8 miles south to its intersection with the southeast corner of Section 9, T.24S., R.32E, MDB&M, then continues west approximately 2 miles to its intersection with the northeast corner of Section 18, then continues south approximately 1 mile to its intersection with the southeast corner of Section 18, then continues west approximately 1 mile to its intersection with the southwest corner of Section 18, then continues north approximately 1 mile to its intersection with the northwest corner of section 18, then continues west approximately 1 mile to its intersection with southwest corner of Section 12, then continues north approximately 1 mile to its intersection with the northwest corner of section 12, then continues west approximately 1 mile to its intersection with the southwest corner of Section 2, then continues north approximately 3 miles to its intersection with the northwest corner of section 26, T. 23S, R.31E., MDB&M, then continues approximately 3 miles west to the southwest corner of Section 20, then continues approximately 3 miles north to its intersection with the southeast corner of Section 6, T.23S., R31E., MDB&M, then continues approximately 1 mile west to its intersection with the southwest corner of Section 6, then continues approximately .75 miles to its intersection with the southeast corner of Section 36, T.22S., R.30E., MDB&M, then continues west approximately 1 mile to its intersection with the southwest corner of Section 36, then continues approximately .5 miles north to its intersection with the Forest Boundary in the northwest corner of Section 36, then continues east approximately 4.5 miles along the Forest Boundary to its intersection with the southwest corner of Section 27, T.22S., R.31E., then continues approximately 9 miles due north to the starting point as shown Exhibit B.

The boundary for the Upper Peppermint Dispersed Camp Closure Area begins at the intersection of South Fork Peppermint Road (Forest Road No. 21S07) and South Fork Peppermint Spur (Forest Road No. 21S07A) in Section 28, Township 21 South, Range 32 East, Mount Diablo Base and Meridian, then continues southeast along South Fork Peppermint Road for approximately 200 feet in Section 28, then continues northeast at a distance of 200 feet south of South Fork Peppermint Spur to the south section line of Section 21, then continues due east for approximately 0.5 miles along the Section 21 southern border to the southeast corner of Section 21, then continues due north approximately 0.25 miles along the Section 21 eastern border to a point 50 feet south of the Peppermint Creek in Section 21, then continues west at a distance of 50 feet south of Peppermint Creek in Section 21, then continues west at a distance of 50 feet south of Peppermint Creek for approximately .75 miles to a point due north of the intersection of South Fork Peppermint Road and South Fork Peppermint Spur in Section 28, then continues due south for approximately .25 miles, back to the starting point.



R.31E.

R.32E.

T. 21 S.


T. 22 S.

T. 23 S.

Forest Order No. 0513-22-07

Area and Road Closures


Exhibit C





Sequoia National Forest


Giant Sequoia Na. Monument


Western Divide Ranger District


 Peppermint Creek

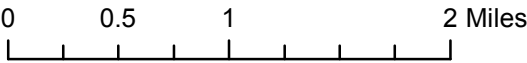
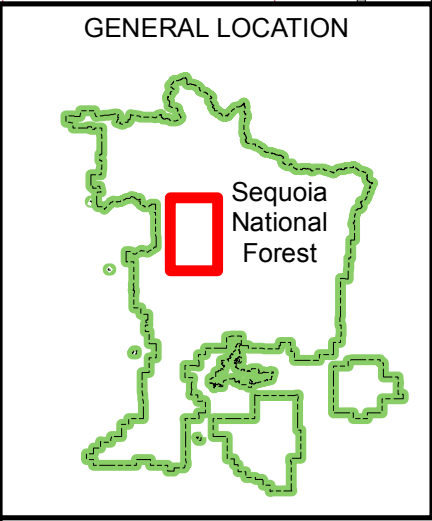
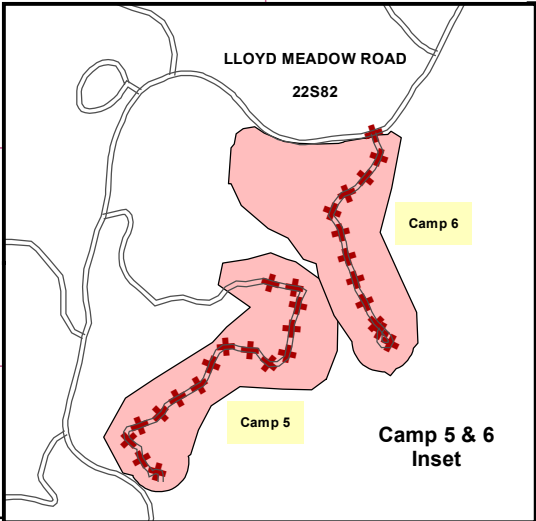
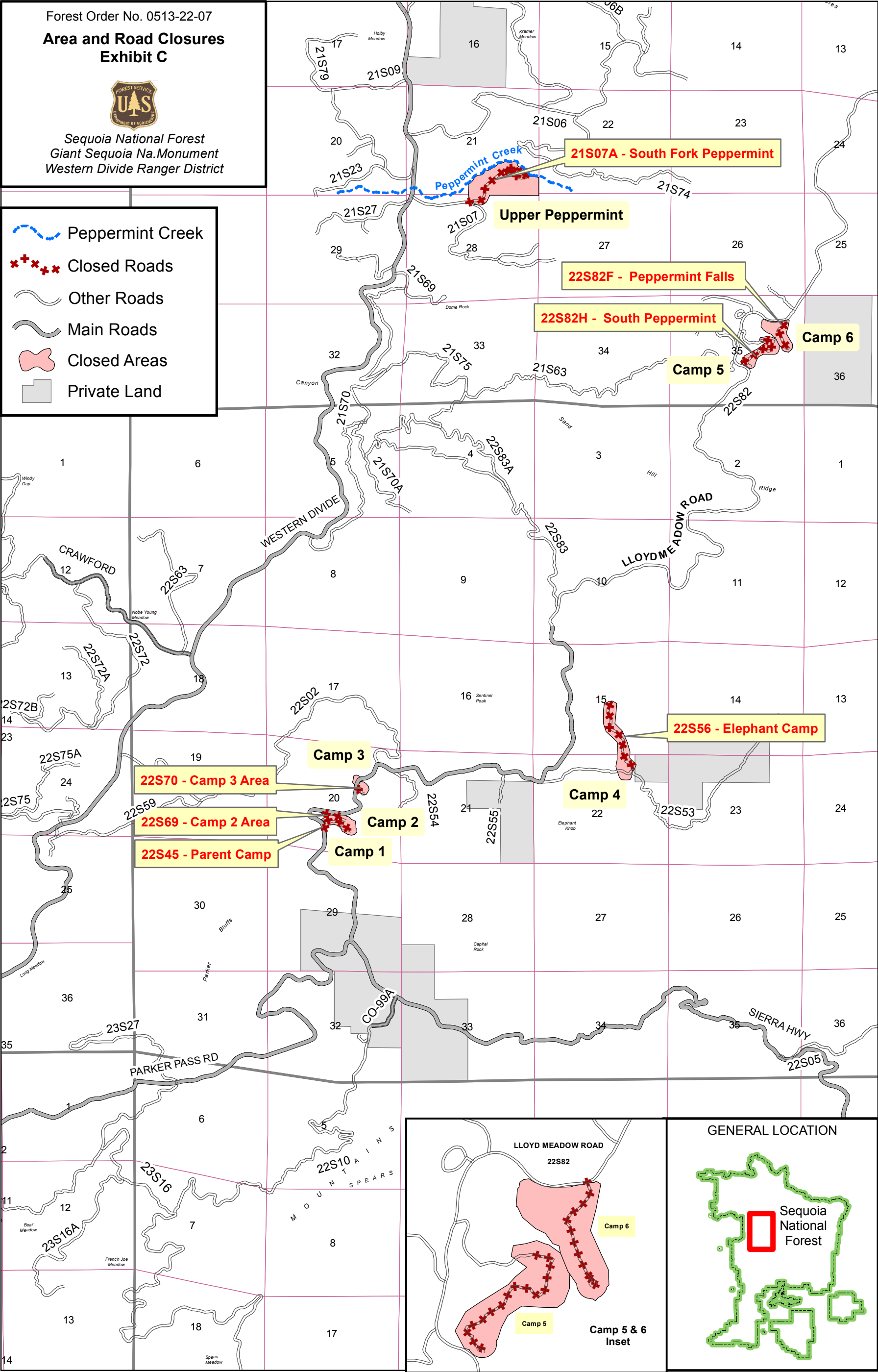
 Closed Roads

 Other Roads

 Main Roads

 Closed Areas

 Private Land



6/06/22

