



Stanislaus National Forest
Forest Order No. STF-16-2022-07
Fire Restrictions (Moderate Fire Hazard Area)



Pursuant to 16 U.S.C. § 551 and 36 C.F.R. § 261.50(a), and to provide for public safety and protect natural resources, the following acts are prohibited within the Moderate Fire Hazard Area of the Stanislaus National Forest, as shown on Exhibit A and described in Exhibit B. This Order is effective from July 26, 2022, through December 31, 2022.

1. Discharging a firearm. 36 CFR § 261.58(m).
2. Building, maintaining, attending or using a fire, campfire, or stove fire, except in the Developed Recreation Sites listed in Exhibit C. 36 C.F.R. § 261.52(a).
3. Smoking, except within an enclosed vehicle or building, within a Developed Recreation Site listed in Exhibit C, or while stopped in an area at least three feet in diameter that is barren or cleared of all flammable material. 36 C.F.R. § 261.52(d).
4. Welding, or operating an acetylene or other torch with an open flame. 36 C.F.R. § 261.52(i).

Pursuant to 36 C.F.R. § 261.50(e), the following persons are exempt from this Order:

1. Persons with Forest Service Permit No. FS-7700-48 (Permit for Use of Roads, Trails, or Areas Restricted by Regulation or Order), specifically exempting them from this Order.
2. Persons possessing a valid California hunting license are not exempt from the prohibitions listed above. However, persons with a valid California hunting license and hunting during the open hunting season as specified by the laws of the State of California may discharge a firearm at a legal game bird or mammal.
3. Persons with a valid California Campfire Permit are not exempt from the prohibitions listed above. However, persons with a valid California Campfire Permit may use a portable stove or lantern using gas, jellied petroleum, or pressurized liquid fuel within the Moderate Fire Hazard Area.
4. Any Federal, State, or local officer, or member of an organized rescue or fire-fighting force in the performance of an official duty.

These prohibitions are in addition to the general prohibitions in 36 C.F.R. Part 261, Subpart A.

A violation of these prohibitions is punishable by a fine of not more than \$5,000.00 for an individual or \$10,000.00 for an organization, or imprisonment for not more than six months, or both. 16 U.S.C. § 551 and 18 U.S.C. §§ 3559, 3571 and 3581.

Executed in Sonora, California, this 26th day of July, 2022.

Elizabeth Martinez
Acting Forest Supervisor
Stanislaus National Forest

This Order supersedes Forest Order No. STF-16-2022-05, dated July 20, 2022.

Stanislaus National Forest
Forest Order No. STF-16-2022-07
Fire Restrictions – Moderate Fire Hazard Area
Exhibit B

The Stanislaus National Forest Moderate Fire Hazard Area boundary begins at the junction of Forest Road No. 7N16 and Forest Road No. 7N09 then continues 10 miles southeast along Forest Road No. 7N09 to its intersection with Highway 4, then continues 3 miles east along Highway 4 to its intersection with Forest Road No. 7N01 (Spicer Meadow Road), then continues 3 miles south along Forest Road No. 7N01 (Spicer Meadow Road) to its intersection with the North Fork Stanislaus River, then continues 3 miles west along the North Fork Stanislaus River to its intersection with Highland Creek, then continues 6 miles southeast along Highland Creek to Spicer Meadow Reservoir, then continues 2 miles east along the south shore of Spicer Meadow Reservoir to its intersection with the Carson Iceberg Wilderness boundary, then continues 22 miles south and then northeast along the Carson Iceberg Wilderness boundary to its intersection with the Clark Fork River, then continues 2 miles west along the Clark Fork River to its intersection with Forest Road No. 20E58, then continues 1.5 miles west along Forest Road No. 20E58 to its intersection with Forest Road No. 7N76A , then continues 0.5 miles southwest along Forest Road No. 7N76A to the end of the road, then continues 0.3 miles due west to the Clark Fork River, then continues 4 miles west along the Clark Fork River to its intersection with Forest Road No. 7N83, then continues 1 mile south along Forest Road No. 7N83 to its intersection with Highway 108, then continues 7 miles southwest along Highway 108 to its intersection with Mill Creek, then continues 4 miles east along Mill Creek to its intersection with Forest Road No. 19EV114, then continues 2 miles west along Forest Road No. 19EV114 Road to its intersection with Forest Road No. 4N12, then continues 5 miles south along Forest Road No. 4N12 to its intersection with Forest Road No. 5N31, then continues 2 miles south and west along Forest Road No. 5N31 to its intersection with Forest Road No. 5N55Y, then continues east for 1 mile along Forest Road No. 5N55Y to its intersection with Forest Trail No. 19E31, then continues 1 mile south along Forest Trail No. 19E31 to its intersection with the Emigrant Wilderness boundary, then continues 14 miles south along the Emigrant Wilderness boundary to the SW ¼ Section 32, T3N R9E, then continues 0.6 mile due west to Reynolds Creek and its junction with Forest Road No. 3N01, then continues 15 miles west along Forest Road No. 3N01 to its intersection with Forest Road No. 4N33, then continues 8 miles north along Forest Road No. 4N33 to its intersection with Forest Road No. 4N26 (Crabtree Road), then continues 7 miles west on Forest Road No. 4N26 (Crabtree Road) to its intersection with Highway 108, then continues 15 miles north on Highway 108 to its intersection with Niagara Creek, then continues 1.5 miles northwest along Niagara Creek to its intersection with the Donnell Lake south shore, then continues 1.5 miles west along the Donnell Lake south shore to the Middle Fork Stanislaus River, then continues 4 miles southwest along the Middle Fork Stanislaus River to its intersection with Basin Creek, then continues 1 mile along Basin Creek to its intersection with Forest Road No. 6N05, then continues 2 miles south along Forest Road No. 6N05 to its intersection with Forest Road No. 5N14, then continues 19 miles north and east along Forest Road No. 5N14 to its intersection with Forest Road No. 6N17, the continues 3 miles north along

Forest Road No. 6N17 to one half mile North of 6N95Y, then continues 1.5 miles due northwest across the North Fork Stanislaus River to the junction of Highway 4 and Forest Road No. 7N23, then continues 6 miles north along Forest Road No. 7N23 to its intersection with Forest Road No. 7N09, then continues 11 miles west and north along Forest Road No. 7N09 back to the starting point, as shown on the attached map (Exhibit A).

Forest Order No. STF-16-2022-07
Stanislaus National Forest
Temporary Fire Restrictions – Moderate Hazard Area
Exhibit C

Exempted Developed Recreation Sites

MIWOK RANGER DISTRICT

Hull Creek Campground

CALAVERAS RANGER DISTRICT

Big Meadow Campground

SUMMIT RANGER DISTRICT

Cottonwood Picnic Area

Clark Fork Campground

Clark Fork Horse Camp

Crabtree Campground

Donnell Vista Picnic Area

Fence Creek Campground

Herring Creek Campground

Kerrick Corral Horse Camp

Meadowview Campground

Pioneer Trail Group Campground

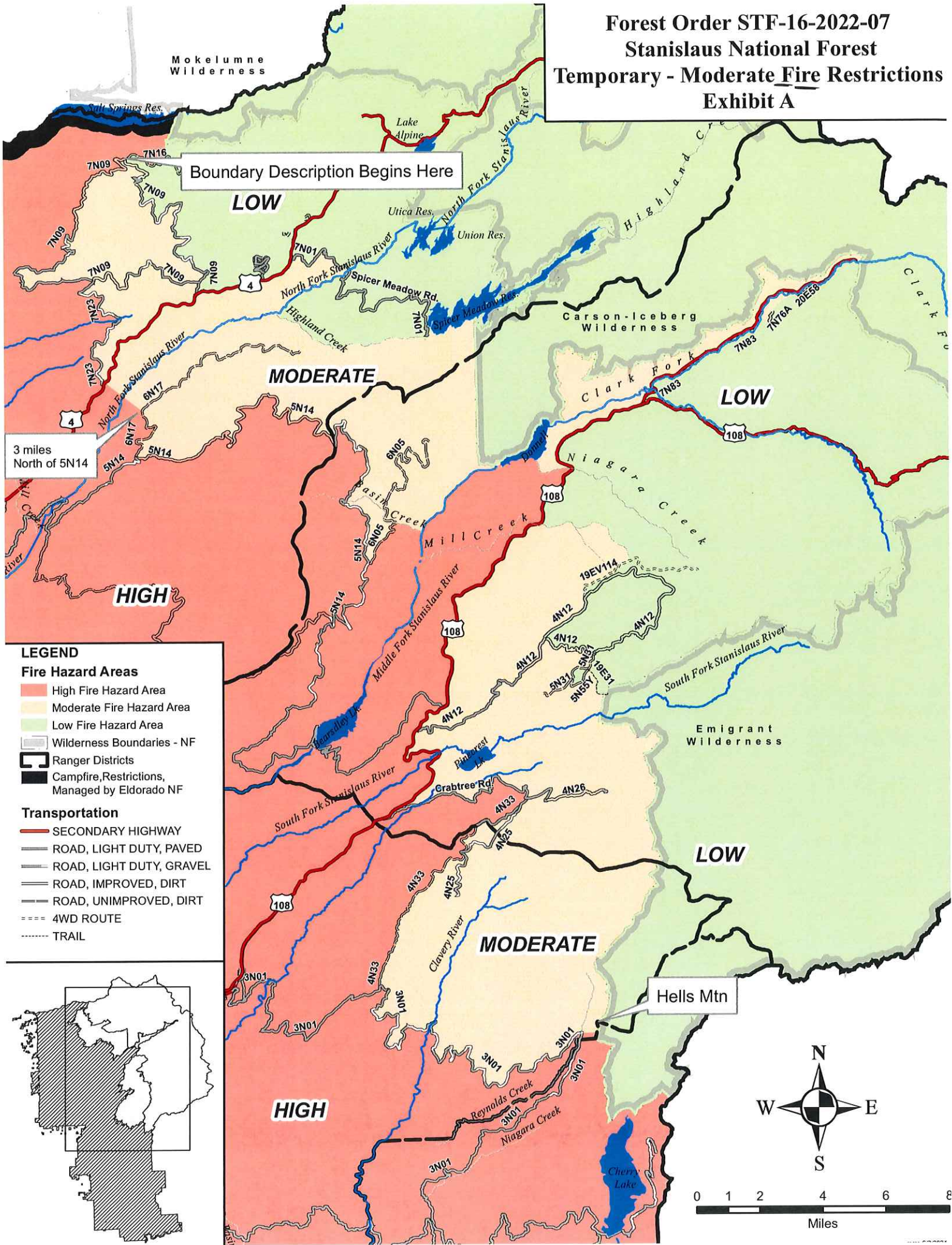
Pinecrest Campground

Pinecrest Lake Picnic Area

Pine Valley Horse Camp

Sand Flat Campground

Forest Order STF-16-2022-07 Stanislaus National Forest Temporary - Moderate Fire Restrictions Exhibit A



Boundary Description Begins Here

3 miles
North of 5N14

Hells Mtn

LEGEND

Fire Hazard Areas

- High Fire Hazard Area
- Moderate Fire Hazard Area
- Low Fire Hazard Area
- Wilderness Boundaries - NF
- Ranger Districts
- Campfire, Restrictions, Managed by Eldorado NF

Transportation

- SECONDARY HIGHWAY
- ROAD, LIGHT DUTY, PAVED
- ROAD, LIGHT DUTY, GRAVEL
- ROAD, IMPROVED, DIRT
- ROAD, UNIMPROVED, DIRT
- 4WD ROUTE
- TRAIL

