



Forest Order No. STF-16-2022-08
Stanislaus National Forest
Temporary Fire Restrictions -- High Fire Hazard Area



Pursuant to 16 U.S.C. § 551 and 36 C.F.R. § 261.50(a), and to provide for public safety and protect natural resources, the following acts are prohibited within the High Fire Hazard Area of the Stanislaus National Forest, as shown on Exhibit A and described in Exhibit B. This Order is effective from August 9, 2022, through December 31, 2022.

1. Discharging a firearm. 36 CFR § 261.58(m).
2. Building, maintaining, attending, or using a fire, campfire, or stove fire, except in the Developed Recreation Sites listed in Exhibit C. 36 C.F.R. § 261.52(a).
3. Smoking, except within an enclosed vehicle or building, within an open Developed Recreation Site listed in Exhibit C, or while stopped in an area at least three feet in diameter that is barren or cleared of all flammable material. 36 C.F.R. § 261.52(d).
4. Welding, or operating an acetylene or other torch with an open flame. 36 C.F.R. § 261.52(i).
5. Operating or using any internal or external combustion engine without a spark arresting device that is properly installed, maintained, and in effective working order in accordance with U.S. Forest Service Standard 5100-1. 36 C.F.R. § 261.52(j).

Pursuant to 36 C.F.R. § 261.50(e), the following persons are exempt from this Order:

1. Persons with Forest Service Permit No. FS-7700-48 (Permit for Use of Roads, Trails, or Areas Restricted by Regulation or Order), specifically exempting them from this Order.
2. Persons possessing a valid California hunting license are not exempt from the prohibitions listed above. However, persons with a valid California hunting license and hunting during the open hunting season as specified by the laws of the State of California may discharge a firearm at a legal game bird or mammal.
3. Persons with a valid California Campfire Permit are not exempt from the prohibitions listed above. However, persons with a valid California Campfire Permit may use a portable stove or lantern using gas, jellied petroleum, or pressurized liquid fuel on National Forest System lands within the High Fire Hazard Area.
4. Any Federal, State, or local officer, or member of an organized rescue or fire-fighting force in the performance of an official duty.

These prohibitions are in addition to the general prohibitions in 36 C.F.R. Part 261, Subpart A.

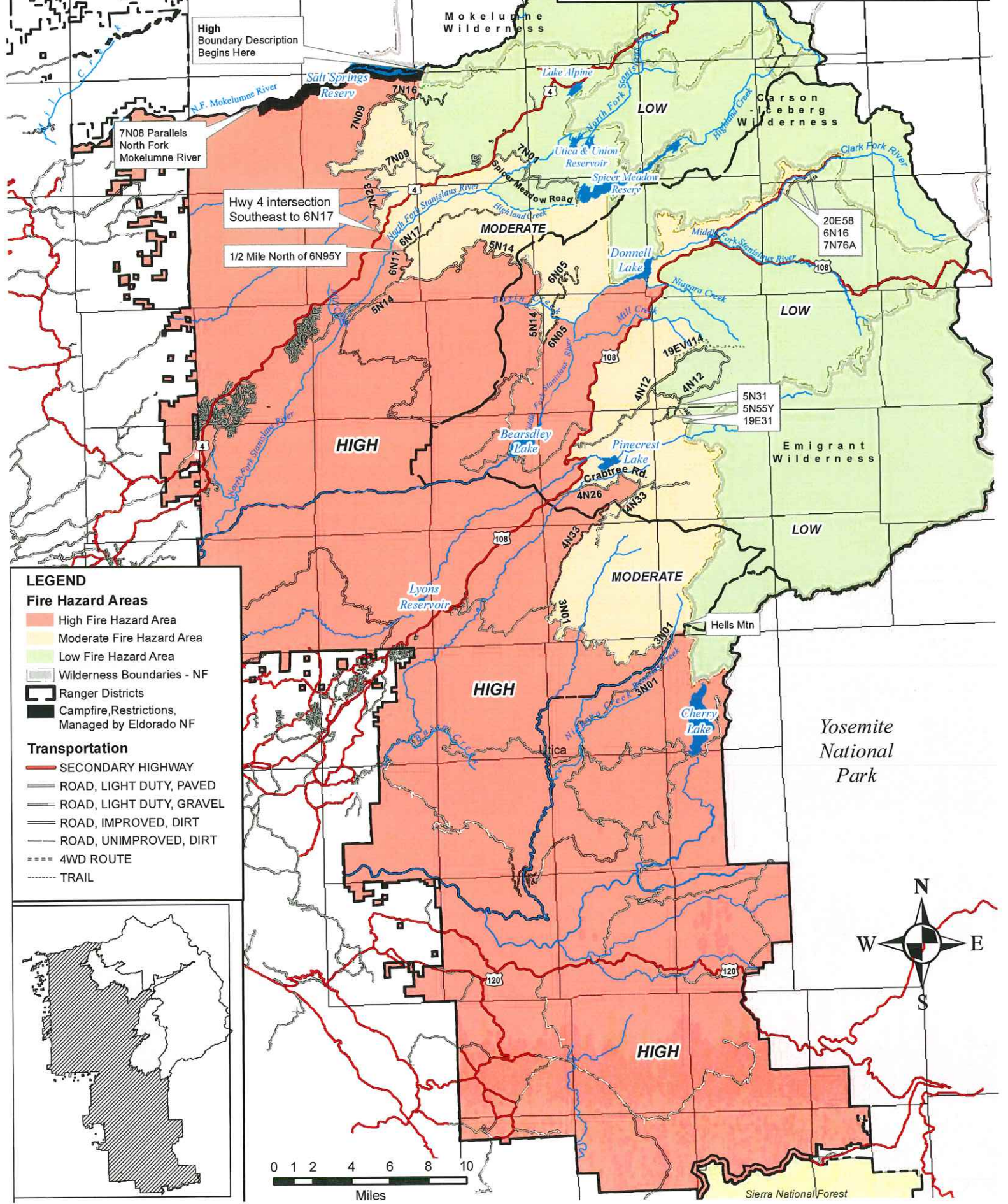
A violation of these prohibitions is punishable by a fine of not more than \$5,000.00 for an individual or \$10,000.00 for an organization, or imprisonment for not more than six months, or both. 16 U.S.C. § 551 and 18 U.S.C. §§ 3559, 3571 and 3581.

Executed in Sonora, California, this 9th day of August, 2022.

Elizabeth Martinez
Acting Forest Supervisor
Stanislaus National Forest

This Order supersedes Forest Order No. STF-16-2022-04, dated July 1, 2022.

Forest Order STF-16-2022-08
 Stanislaus National Forest
 Temporary Fire Restrictions
 Exhibit A



LEGEND

Fire Hazard Areas

- High Fire Hazard Area
- Moderate Fire Hazard Area
- Low Fire Hazard Area

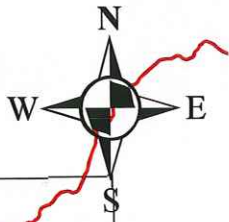
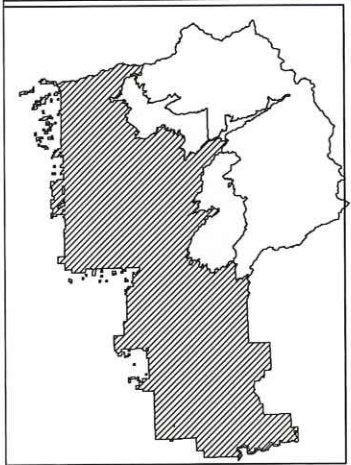
Wilderness Boundaries - NF

Ranger Districts

Campfire, Restrictions, Managed by Eldorado NF

Transportation

- SECONDARY HIGHWAY
- ROAD, LIGHT DUTY, PAVED
- ROAD, LIGHT DUTY, GRAVEL
- ROAD, IMPROVED, DIRT
- ROAD, UNIMPROVED, DIRT
- 4WD ROUTE
- TRAIL



Yosemite National Park

Sierra National Forest

Forest Order No. STF-16-2022-08
Stanislaus National Forest
Temporary Fire Restrictions – High Fire Hazard Area

Exhibit B

The Stanislaus National Forest High Fire Hazard Area boundary begins at a point on the west boundary of the Mokelumne Wilderness .5 miles south of the east end of Salt Spring Reservoir, then continues due south across the SW ¼ of Section 6 and the NW ¼ of Section 7, T7N R17E, to its intersection with Forest Road No. 7N16, then continues 2 miles west along Forest Road No. 7N16 to its intersection with Forest Road No. 7N09, then continues 11 miles west along Forest Road No. 7N09 to its intersection with Forest Road 7N23, then continues 6 miles south along Forest Road No. 7N23 to its intersection with Highway 4, then continues due southeast to Forest Road No. 6N17, then continues 3 miles south along Forest Road No. 6N17 to its intersection with Forest Road No. 5N14, then continues 19 miles east along Forest Road No. 5N14 to its intersection with Forest Road No. 6N05, then continues 2 miles north along Forest Road No. 6N05 to Basin Creek, then continues 1 mile east along Basin Creek to the confluence with the Middle Fork Stanislaus River, then continues 4 miles northeast along the Middle Fork Stanislaus River to Donnell Lake, then continues 1.5 miles east along the south shore of Donnell Lake to Niagara Creek, then continues 1.5 miles south and east along Niagara Creek to its intersection with Highway 108, then continues 15 miles south along Highway 108 to Forest Road No. 4N26 (Crabtree Road), then continues 7 miles east along Forest Road No. 4N26 (Crabtree Road) to its intersection with Forest Road No. 4N33, then continues 8 miles southwest along Forest Road No. 4N33 to its intersection with Forest Road No. 3N01, then continues 15 miles east and then south along Forest Road No. 3N01 to its intersection with Reynolds Creek, then continues 0.6 mile due east to the Emigrant Wilderness boundary, then continues 6 miles south and east along the Emigrant Wilderness boundary to the Stanislaus National Forest boundary, then continues south along the boundary of Yosemite National Park and the Stanislaus National Forest to the boundary of the Sierra National Forest and the Stanislaus National Forest, then continues west, north and east along the boundary of the Stanislaus National Forest to the SE 1/4 of Section 12, T7N R15E, then continues due south 0.5 mile, then continues east and northeast paralleling the Stanislaus National Forest northern boundary and the southern edge of Salt Springs Reservoir at a distance of 0.5 mile back to the starting point, as shown on Exhibit A.

Forest Order No. STF-16-2022-08
Stanislaus National Forest
Temporary Fire Restrictions – High Fire Hazard Area
Exhibit C

Exempted Developed Recreation Sites

Mi Wok Ranger District

Fraser Flat Campground
River Ranch Campground
Riverside Day Use Area
North Fork Day Use Area
Sand Bar Flat Campground
Crandall OHV Campground

Calaveras Ranger District

Waka Luu Hep Yoo Campground
Sourgrass Day Use Area
Black Springs Campground

Summit Ranger District

Cascade Campground
Beardsley Lake Day Use Area
Beardsley Campground
TeleLi puLaya Campground

Groveland Ranger District

Carlton Day Use Area
Dimond O Campground
Lost Claim Campground
Lumsden Campground
Rainbow Pool Day Use Area
Sweetwater Campground
The Pines Campground
Peach Growers Tract
Cherry Valley Campground
Middlefork Day Use Area