

**UNITED STATES DEPARTMENT OF AGRICULTURE
UNITED STATES FOREST SERVICE
OZARK-ST. FRANCIS NATIONAL FORESTS
Russellville, Arkansas**

Order No. 08-10-00-22-135

OCCUPANCY AND USE ORDER

Pursuant to 36 CFR 261.58(a), (j), (t), (bb) and 261.52(f) it is hereby ordered that the prohibitions herein after set forth apply to all areas within the Ozark-St. Francis National Forests. This closure is effective until December 31, 2026 or rescinded by an authorized Forest Official, whichever occurs first.

- 1. Camping in the general Forest area (outside developed recreation areas) shall be limited to a period not to exceed 30 consecutive days. (36 CFR 261.58(a))**
 - a. Once the 30 consecutive day limit has been reached, the camp must be removed for fourteen (14) days and cannot be reestablished less than one (1) mile from the original campsite. (36 CFR 261.58(a))**
 - b. Camping in the general Forest area (outside developed recreation areas) shall not exceed a total of 90 days within the calendar year. (36 CFR 261.58(a))**
- 2. Being publicly nude. (36 CFR 261.58(j))**
- 3. Possessing a beverage which is defined as an alcoholic beverage by state law. (36 CFR 261.58(bb))**
- 4. Possessing, storing or transporting any part of a cannabis plant. (36 CFR 261.58(t))**
- 5. Possessing, discharging or using any kind of firework or other pyrotechnic device. (36 CFR 261.52(f))**

Pursuant to 36 CFR 261.50(e), the following persons are exempt from this order:

1. Persons with a permit specifically authorizing the otherwise prohibited act or omission.
2. Any Federal, State, or local officer or member of an organized rescue or fire fighting force in the performance of an official duty.

Executed in Russellville, Arkansas, this 1 day of August 2022.

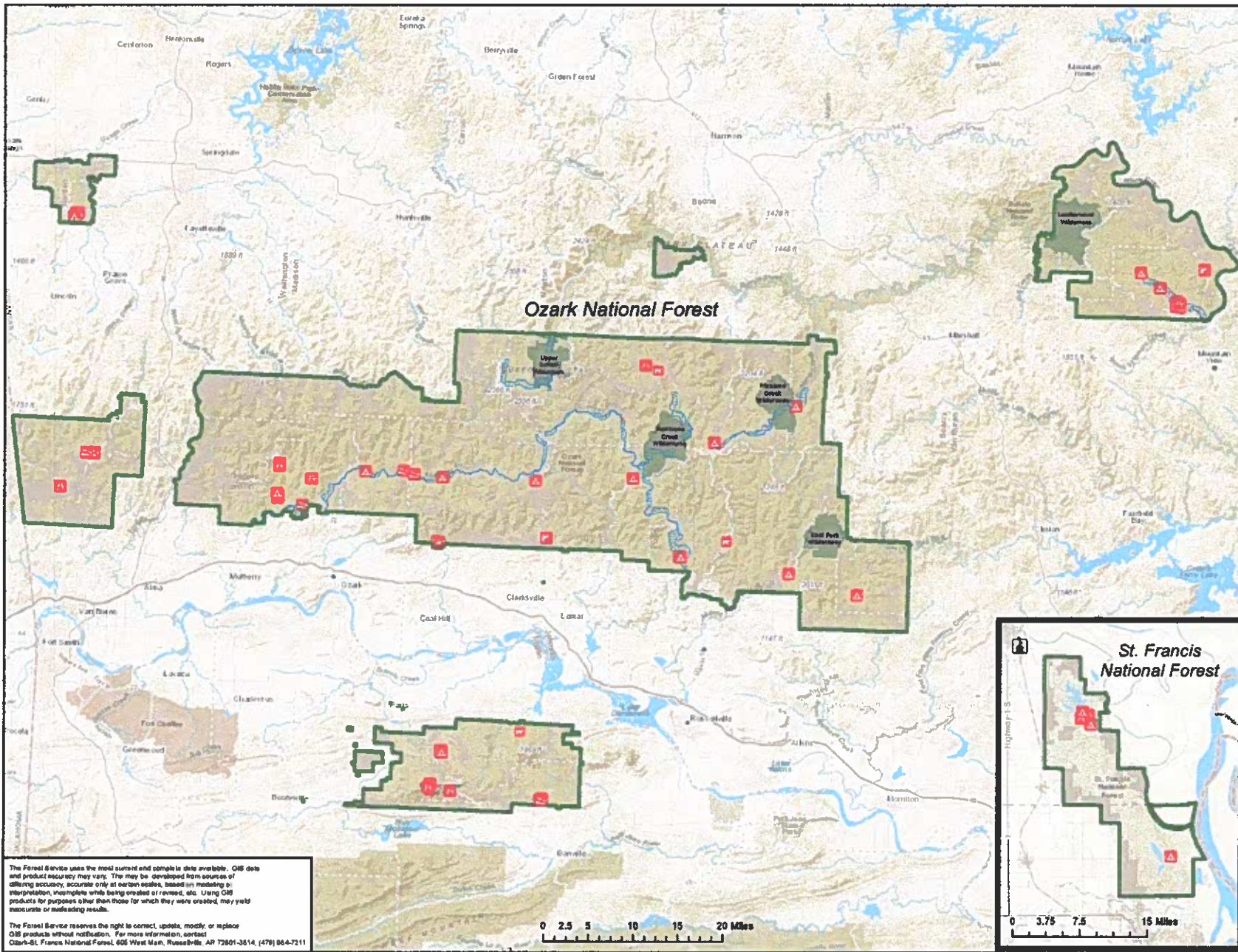


LORI D. WOOD

Forest Supervisor

Ozark-St. Francis National Forests

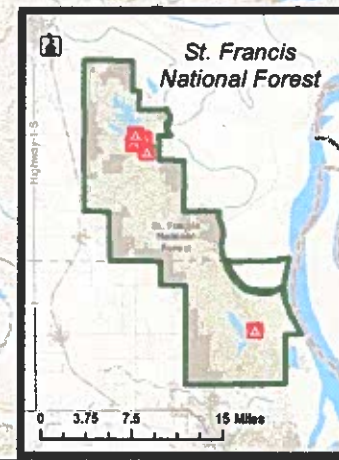
Violation of these prohibitions is punishable by a fine of not more than \$5,000 for an individual and \$10,000 for an organization, or imprisonment for not more than six months, or both. (16 U.S.C. 551 and 18 U.S.C. 3559 and 3571).



General Forest Occupancy and Use Supervisor's Order

Ozark-St. Francis National Forests
 Sylamore Ranger District
 Big Piney Ranger District
 Pleasant Hill Ranger District
 Boston Mountain Ranger District
 Magazine Ranger District
 St. Francis Ranger District

- Forest Service Administrative Sites
- Recreation Sites**
 - Boating Site
 - Campground
 - Day Use Area
 - Fishing Site
 - Group Campground
 - Horse Camp
 - Lodge
 - Visitor Center
 - Picnic Site
 - Swimming Site
 - Target Range
- Wild and Scenic River Corridor
- Wilderness
- Private Land



USDA Forest Service
 Ozark-St. Francis National Forests
 Map of the Forests

The Forest Service uses the most current and complete data available. GIS data and product accuracy may vary. They may be developed from sources of differing accuracy, accurate only at certain scales, based on modeling or interpretation, incomplete while being created or revised, etc. Using GIS products for purposes other than those for which they were created, may yield inaccurate or misleading results.

The Forest Service reserves the right to correct, update, modify, or replace GIS products without notification. For more information, contact Ozark-St. Francis National Forest, 606 West Main, Russellville, AR 72801-3614, (479) 664-7211