



**U.S. Department of Agriculture, U.S. Forest Service  
Nez Perce-Clearwater National Forest  
Red River Ranger District**

**Area Closure**

**PROHIBITIONS**

Pursuant to 16 U.S.C. § 551 and 36 C.F.R. § 261.50 (a), the following is prohibited on the National Forest System (NFS) lands on the Red River Ranger District, Nez Perce-Clearwater National Forests, described below and shown on the attached map incorporated into this Order as Exhibit A:

- 1. Going into or being upon the area.** The area is closed to all uses, including vehicular traffic and pedestrians. *[Title 36 CFR 261.52(e)].*

**EXEMPTIONS**

Pursuant to 36 C.F.R. § 261.50(e), the following persons are exempt from this Order:

1. Persons with Forest Service Permit No. FS-7700-48 (Permit for Use of Roads, Trails, or Areas Restricted by Regulation or Order), specifically exempting them from this Order or a written determination by a Forest Service authorized officer that a permit is not required under 36 C.F.R. § 251.50(e)(1) or (2).
2. Any Federal, State, or Local Officer, or member of an organized rescue or firefighting resource in the performance of an official duty. 36 C.F.R. § 261.50(e)(4).

## DESCRIBED AREA

It is prohibited to go into or be upon any part of the area described herein and/or shown on the attached map. Commencing at the junction of FS Road 492 and Idaho Highway 14 (also known as the point of beginning) and proceeding east along Idaho Highway 14<sup>1</sup> for approximately 5.4 miles to the junction with the Elk City Township Boundary. Then proceeding south along the Elk City Township Boundary for 1.92 miles and then east along the township boundary for 2.6 miles until intersecting FS Road 222. Then proceeding east and south along FS Road 222<sup>2</sup> for approximately 6.4 miles to the junction with FS Road 1800. Then proceeding west along FS Road 1800 for 0.35 miles until intersecting the junction with FS Road 9803 (a closed road). Then proceeding along FS Road 9803 for 0.22 miles until intersecting the junction with FS Trail 508. Then proceeding south approximately 9.1 miles on FS Trail 508 until the junction with FS Trail 207. Then continuing to proceed south for approximately 8.41 miles on FS Trail 207 until intersecting the hydrologic divide between the Big Creek and Upper Crooked Creek sub-watersheds. Then proceeding south along the Big Creek / Upper Crooked Creek hydrologic divide for 2.4 miles until intersecting Trail 205. Then proceeding northwest for approximately 8.7 miles along FS Trail 205 until intersecting the junction with Forest Road 233. Then proceeding southwest for approximately 5.4 miles along Forest Road 233 until intersecting the junction with Forest Road 233C. Then continuing to proceed southwest for approximately 0.8 miles along Forest Road 233C until intersecting the junction with Forest Trail 313. Then proceeding west and then northwest along Forest Trail 313 for 3.2 miles until intersecting the junction with Forest Trail 300. Then proceeding north along Forest Trail 300 for approximately 5.7 miles until the trail leaves the hydrologic divide between Upper Johns Creek and Twentymile Creek sub-watersheds located within the NW ¼ NW ¼ of section 17, T27N R6E. From this location, then proceeding north approximately 2.1 miles along the hydrologic divide between Upper Johns Creek and Twentymile Creek sub-watersheds until intersecting Trail 806. Then proceeding east along trail 806 for 0.45 miles until intersecting the junction with Trail 414. Then proceeding north along trail 414 for approximately 0.9 miles until intersecting the junction with Trail 930. Then proceeding north along trail 930 for approximately 3.2 miles until intersecting Forest Road 492. Then proceeding east then north along Forest Road 492 for approximately 18 miles until intersecting Idaho Highway 14 and the point of beginning.

The area contained within this closure order contains 106,947 acres more or less.

### CLOSURE AREA BOUNDARY NOTES:

- <sup>1</sup> Idaho Highway 14 (South Fork Highway) is OPEN.
- <sup>2</sup> Forest Service Road 222 (Dixie Road) is OPEN.

## PURPOSE

The purpose of this order is to protect public health and safety due to wildfire activity in the area.

## IMPLEMENTATION

1. This Order shall be in effect from September 12, 2022, at 12:01 a.m., through October 30, 2022, at 6:00 p.m., unless rescinded.
2. A map identifying the described AREA is attached and made part of this Order as Exhibit A. For a digital version of this Order and Exhibit A, go to <https://www.fs.usda.gov/alerts/nezperceclearwater/alerts-notice>.

3. Unless otherwise expressly defined in this Order, the terms used in this Order are defined by the regulations of the Secretary of Agriculture, 36 C.F.R. Chapter II, Parts 200-299. If there are terms in this Order that are not expressly defined in the Order or 36 C.F.R. Chapter II, Parts 200-299, their meaning shall be determined by their plain language definitions.
4. A violation of the above prohibitions is punishable as a Class B misdemeanor by a fine of not more than \$5,000 for individuals and \$10,000 for organizations, or by imprisonment for not more than six months, or both. 16 U.S.C. § 551; 18 U.S.C. §§ 3559, 3571, and 3581.
5. Contact the Red River Ranger District in Elk City, ID, (208) 842-2245, and Nez Perce-Clearwater National Forest Supervisor's Office in Kamiah, ID, (208) 451-5585, for more information about this Order.
6. This Order supersedes any previous Orders prohibiting the same or similar acts on the same Described Area.

Signed and issued on September 12, 2022.

A handwritten signature in blue ink, appearing to read "Marty Mathews", is written over a horizontal line.

Forest Supervisor  
Nez Perce-Clearwater National Forest

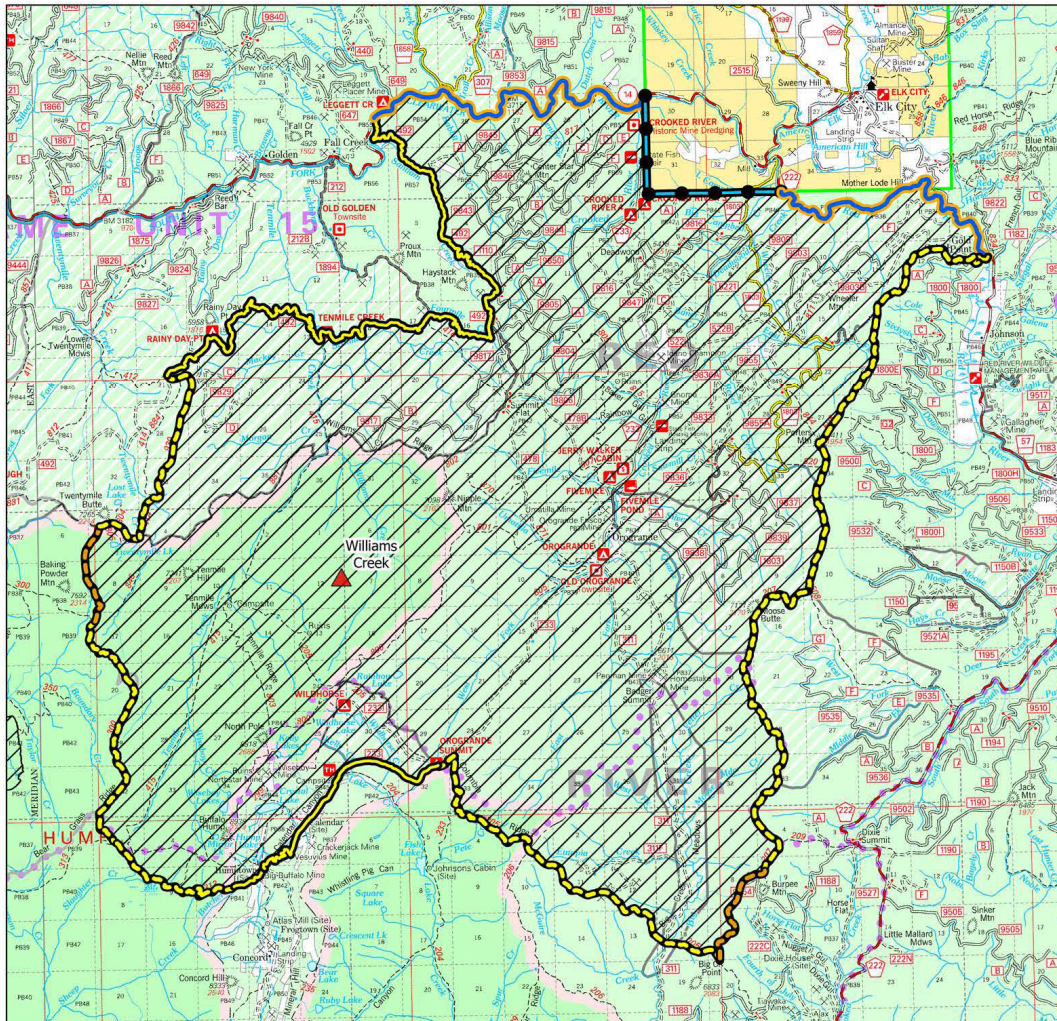




EXHIBIT A

# Williams Creek Fire Closure

Order Number 01-17-05-22-003



## Williams Creek Fire - Area Closure

Roads and Trails along Area Closure Boundary that are **OPEN** to public use.

**Idaho Highway 14** - South Fork Highway: Open from MP 35.2 to MP 43 at Elk City Township Boundary.

**NFSR 222** - Dixie Road: Open from Forest Boundary at MP 0.95 to junction with Forest Road 1800 at MP 7.36.

Roads and Trails along Area Closure Boundary that are **CLOSED** to public use.

**NFSR 1800** - 66 Creek Road: Closed from junction with Road 222 to junction with Road 9803.

**NFSR 9803** - North Wheeler Mtn. Road: Closed from junction with Road 1800 to junction with Trail 508.

**NFST 508** Porter Trail: Closed from junction with Road 9803 to junction with Trail 207.

**NFST 207** Moose Butte Trail: Closed from junction with Trail 508 to hydrologic divide located in T26N R8E section 9 NW 1/4.

**NFST 205** Columbia Ridge Trail: Closed from hydrologic divide/ridge located in T26N R8E section 20 NW 1/4 to junction with Road 233 near Orogrande Summit.

**NFSR 233** Crooked River Road: Closed from junction with Trail 205 to junction with Road 233C.

**NFSR 233C** Little Buffalo Road: Closed from junction with Road 233 to junction with Trail 313.

**NFST 313** Hump Trail: Closed from junction with Road 233C to junction with Trail 300.

**NFST 300** Boundary Peak Trail: Closed from junction with Trail 313 to hydrologic divide/ridge located in T27N R6E section 17 NW 1/4.

**NFST 806** 20 Mile Lake Trail: Closed from hydrologic divide/ridge located in T27N R6E section 5 NW 1/4 to junction with Trail 414.

**NFST 414** 20 Mile Creek Trail: Closed from junction with Trail 806 to junction with Trail 930.

**NFST 930** Desperation Mine Trail: Closed from junction with Trail 414 to junction with Road 492.

**NFSR 492** Santiam Sourdough Road: Closed from junction with Trail 930 to beginning of road/junction with Idaho Highway 14.



Closure location within the Nez Perce-Clearwater National Forests

## Map Legend

- Closure Area
- Active Fire Incident
- Road: open route along area closure
- Road: closed route along area closure
- Trail: closed route along area closure
- Hydrologic Divide/Ridge Line: closed along area closure
- Township Boundary: closed along area closure

0 1 2 4 Miles

Map Created: 9/9/2022 4:01 PM

Map Author: sammartin

Spatial Reference  
Name: NAD 1983 UTM Zone 11N  
GCS: GCS North American 1983  
Datum: North American 1983  
Projection: Transverse Mercator  
False Easting: 500,000.0000  
False Northing: 0.0000  
Map Units: Meter