

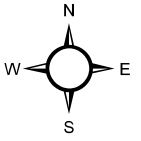
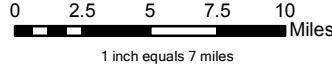


Christmas Tree Cutting

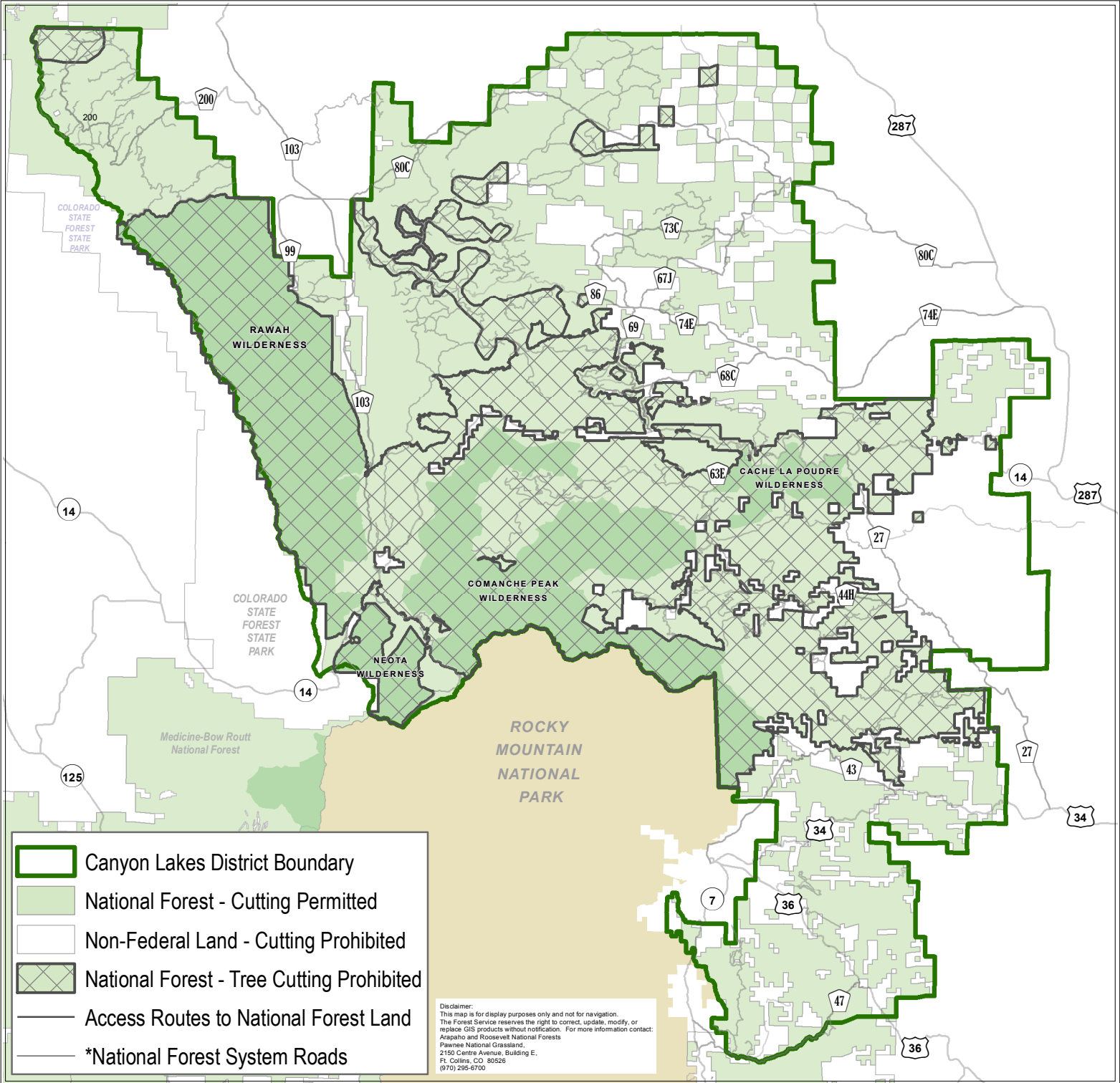
Forest Service
US DEPARTMENT OF AGRICULTURE

Roosevelt National Forest
Canyon Lakes Ranger District
Larimer County, CO

Areas and Access Routes



Date: 10/7/2022



*Reference the Motor Vehicle Use Map (MVUM) to identify roads seasonally closed to motor vehicles. These may be accessed by snowshoe, ski, and snowmobile depending on regulations.

- Travel at your own risk. Chains/traction devices recommended. Some roads may not be plowed or may not be suitable for passenger vehicles during the winter season.
- National Forest lands are intermixed with private lands. Only cut on public lands. Maps on the Avenza App can help identify your exact location. Some prohibited areas include fire burn scars.
- Follow all regulations listed on the cutting tree permit. Cutting is prohibited in developed recreation sites.
- Park in areas so traffic can safely pass; do not block gates.

*Scan for the MVUM North Map



*Scan for the MVUM South Map

