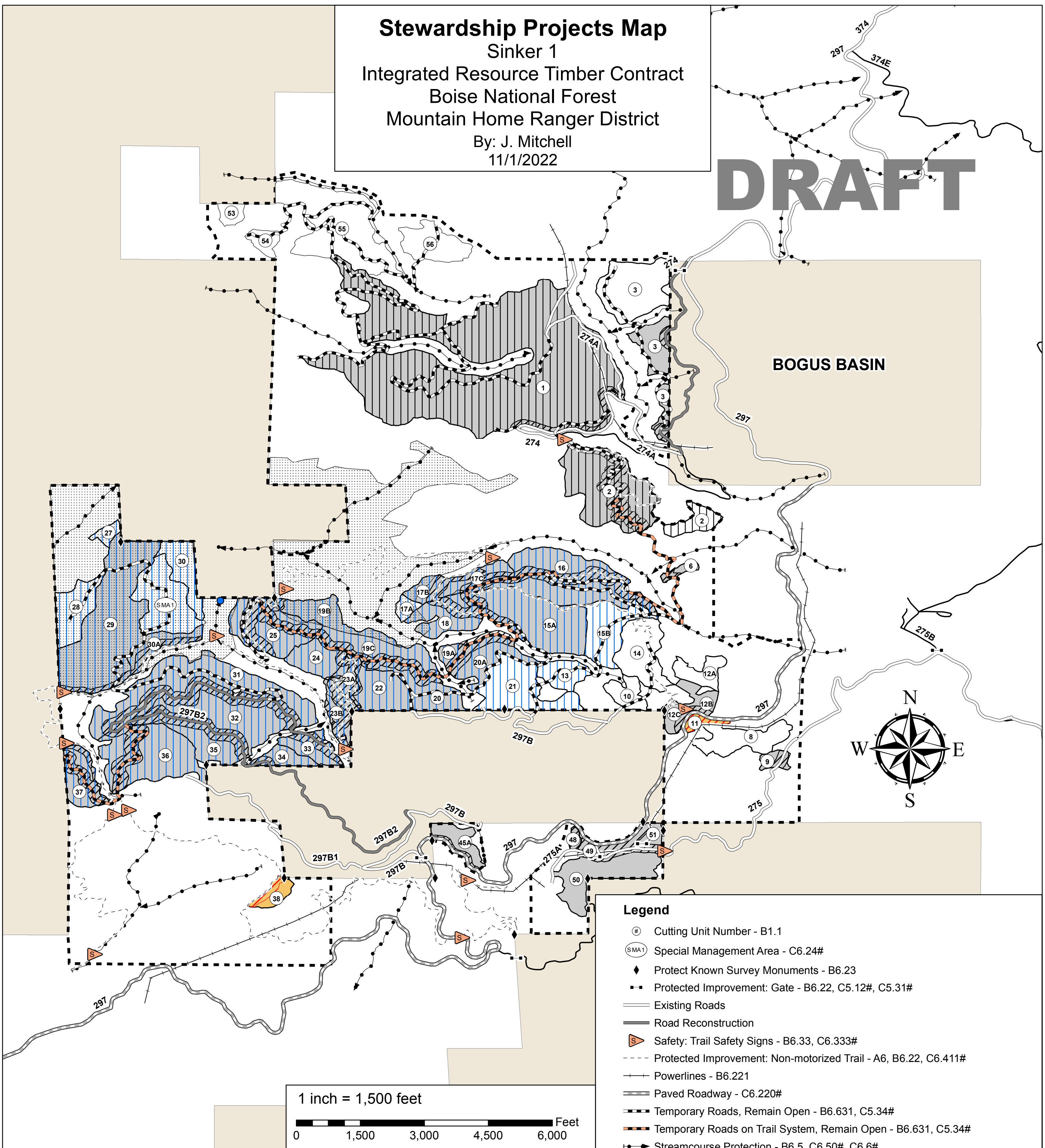


Stewardship Projects Map
 Sinker 1
 Integrated Resource Timber Contract
 Boise National Forest
 Mountain Home Ranger District
 By: J. Mitchell
 11/1/2022

DRAFT



Project #	Priority #	Item/Unit #	Mandatory Stewardship Projects	Acres
1	1	1-3, 6, 9, 12B, 12C, 15A, 16, 17B, 17C, 18, 19A, 19B, 19C, 20, 20A, 22-25, 29, 30A, 31-37, 45A, 48-51	Hazard Tree Felling, Yarding, and Decking	221.4
Project #	Priority #	Unit #	Optional Stewardship Projects	Acres
2	2	N/A	Culvert Removal	N/A
3	3	11 (TSA)	Hazard Tree Felling, Yarding, and Decking	3.4
4	3	38 (TSA)	Hazard Tree Felling, Yarding, and Decking	2.5

- Legend**
- # Cutting Unit Number - B1.1
 - (SMA1) Special Management Area - C6.24#
 - ◆ Protect Known Survey Monuments - B6.23
 - Protected Improvement: Gate - B6.22, C5.12#, C5.31#
 - Existing Roads
 - Road Reconstruction
 - ▲ Safety: Trail Safety Signs - B6.33, C6.333#
 - Protected Improvement: Non-motorized Trail - A6, B6.22, C6.411#
 - Powerlines - B6.221
 - Paved Roadway - C6.220#
 - Temporary Roads, Remain Open - B6.631, C5.34#
 - Temporary Roads on Trail System, Remain Open - B6.631, C5.34#
 - Streamcourse Protection - B6.5, C6.50#, C6.6#
 - Contract Operation Restrictions, Goshawk - C6.312#
 - Contract Operation Restrictions, Flammulated Owl Surveys - C6.312#
 - Contract Operation Restrictions, Big Game Winter Range - C6.312#
 - Sale Area Boundary - B1.1
 - Other Ownership
- Stewardship Project Items - C6.9#**
- Optional Culvert Removal
 - Mandatory Stewardship Unit
 - Optional Stewardship Unit
 - No Stewardship Work
 - Mandatory Hazard Tree Felling, Yarding, & Decking
 - Optional Hazard Tree Felling, Yarding, & Decking