



Forest Service
U.S. DEPARTMENT OF AGRICULTURE

Southern Region | National Forests in North Carolina | R8 MB-161-I | January 2023

Nantahala and Pisgah National Forests



Final Environmental Impact Statement

for the
Land Management Plan

Appendix I: Map Series

In accordance with Federal civil rights law and U.S. Department of Agriculture (USDA) civil rights regulations and policies, the USDA, its Agencies, offices, and employees, and institutions participating in or administering USDA programs are prohibited from discriminating based on race, color, national origin, religion, sex, gender identity (including gender expression), sexual orientation, disability, age, marital status, family/parental status, income derived from a public assistance program, political beliefs, or reprisal or retaliation for prior civil rights activity, in any program or activity conducted or funded by USDA (not all bases apply to all programs). Remedies and complaint filing deadlines vary by program or incident.

Persons with disabilities who require alternative means of communication for program information (e.g., Braille, large print, audiotape, American Sign Language, etc.) should contact the responsible Agency or USDA's TARGET Center at (202) 720-2600 (voice and TTY) or contact USDA through the Federal Relay Service at (800) 877-8339. Additionally, program information may be made available in languages other than English.

To file a program discrimination complaint, complete the USDA Program Discrimination Complaint Form, AD-3027, found online at http://www.ascr.usda.gov/complaint_filing_cust.html and at any USDA office or write a letter addressed to USDA and provide in the letter all of the information requested in the form. To request a copy of the complaint form, call (866) 632-9992. Submit your completed form or letter to USDA by: (1) mail: U.S. Department of Agriculture, Office of the Assistant Secretary for Civil Rights, 1400 Independence Avenue, SW, Washington, D.C. 20250-9410; (2) fax: (202) 690-7442; or (3) email: program.intake@usda.gov.

USDA is an equal opportunity provider, employer and lender.

**Final Environmental Impact Statement
Nantahala and Pisgah National Forests
Appendix I. Map Series**

Prepared By:

**Bart Matthews, Geospatial Systems Specialist
Holly Stratton, Forest GIS Coordinator (ret.)
Amber Vanderwolf, GIS Specialist
Eric Pullium, GIS Specialist
Olive Waters, GIS Specialist**

For Information Contact:

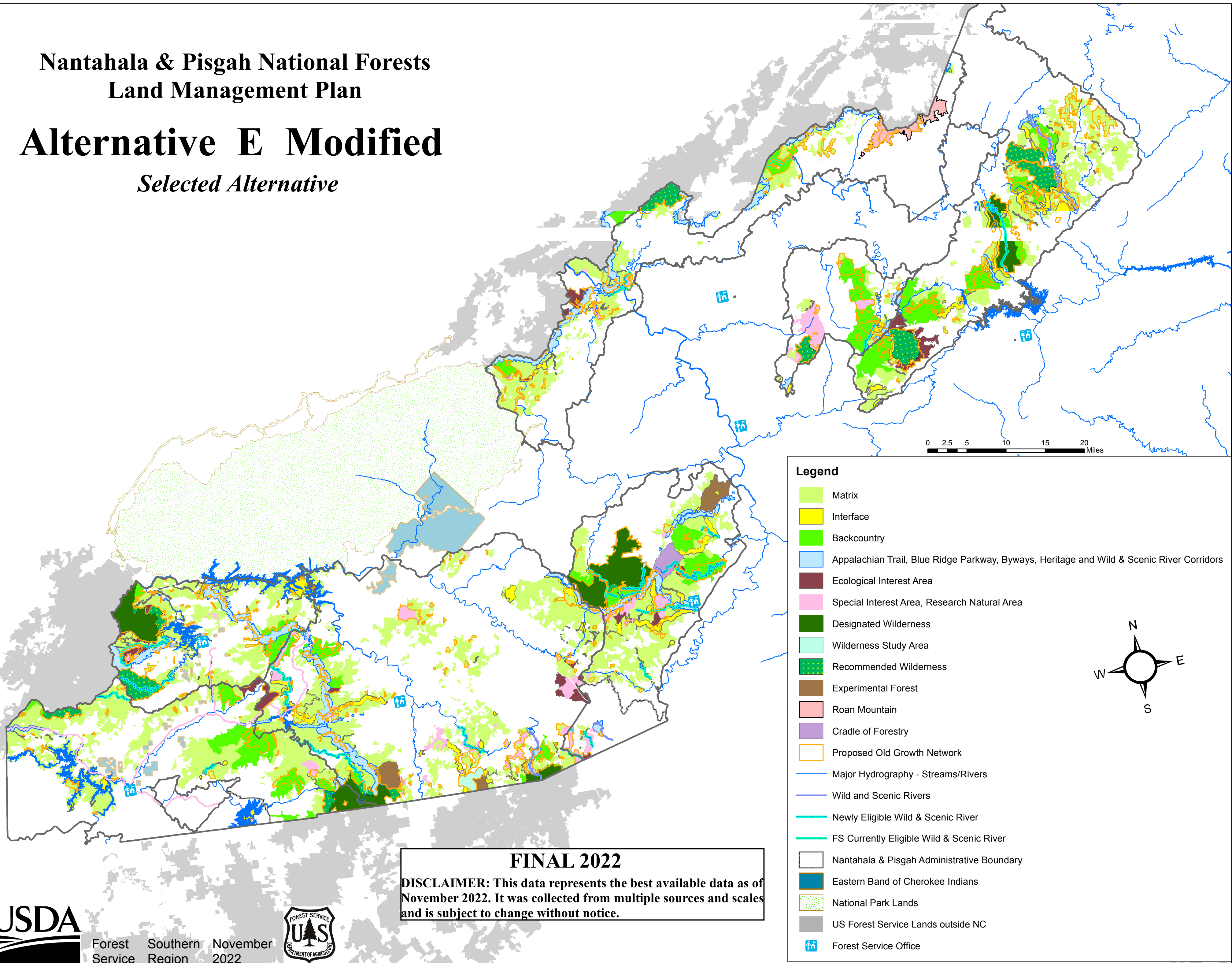
**Michelle Aldridge, Forest Planner
National Forests in North Carolina
160 Zillicoa Street Suite A
Asheville, NC 28801
(828) 257- 4200
www.fs.usda.gov/goto/nfsnc/nprevision**

This page left intentionally blank for formatting.

Nantahala & Pisgah National Forests Land Management Plan

Alternative E Modified

Selected Alternative

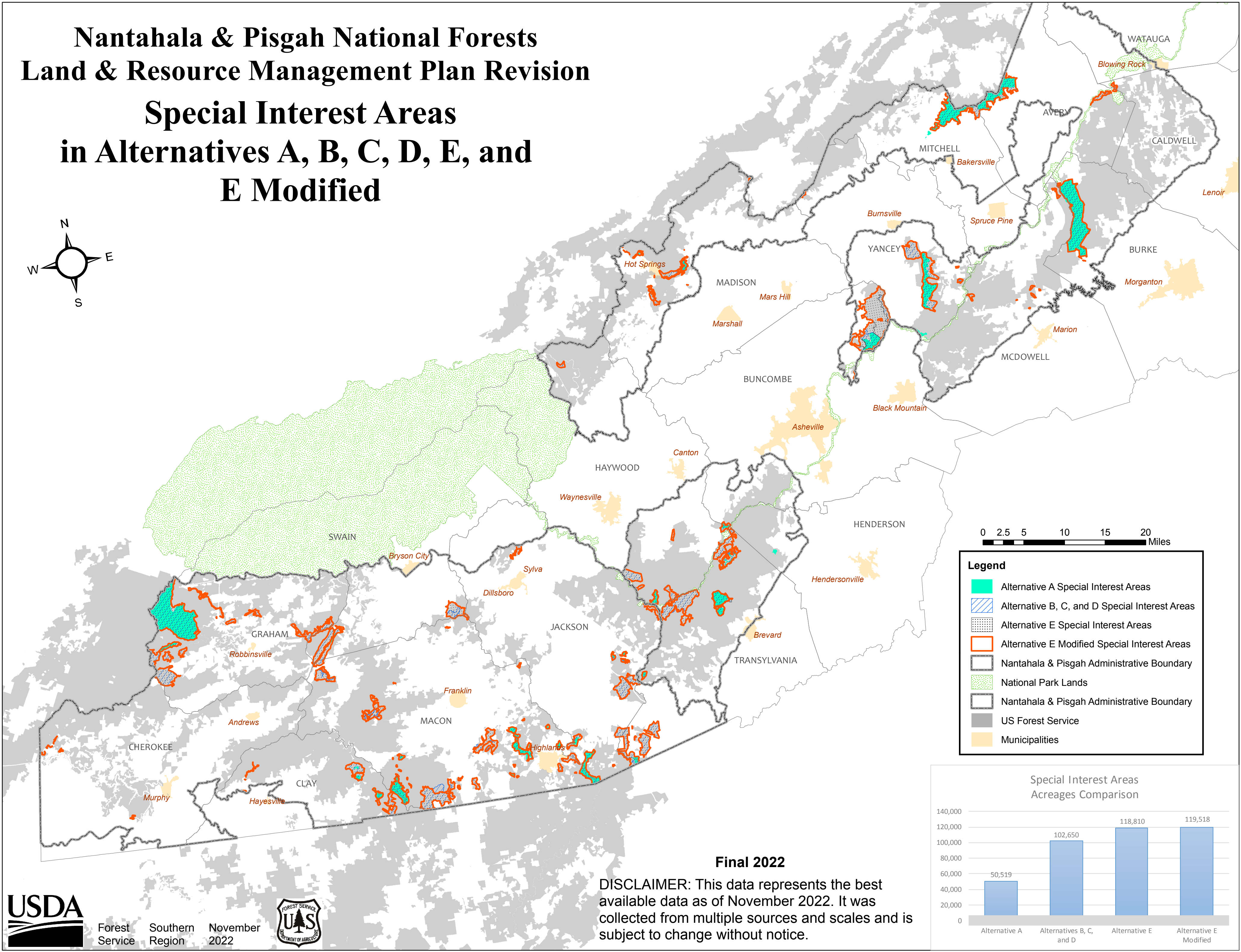
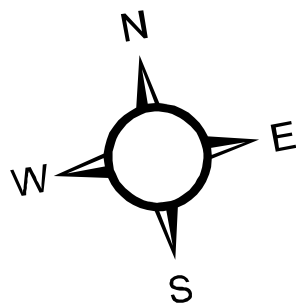


Nantahala & Pisgah National Forests

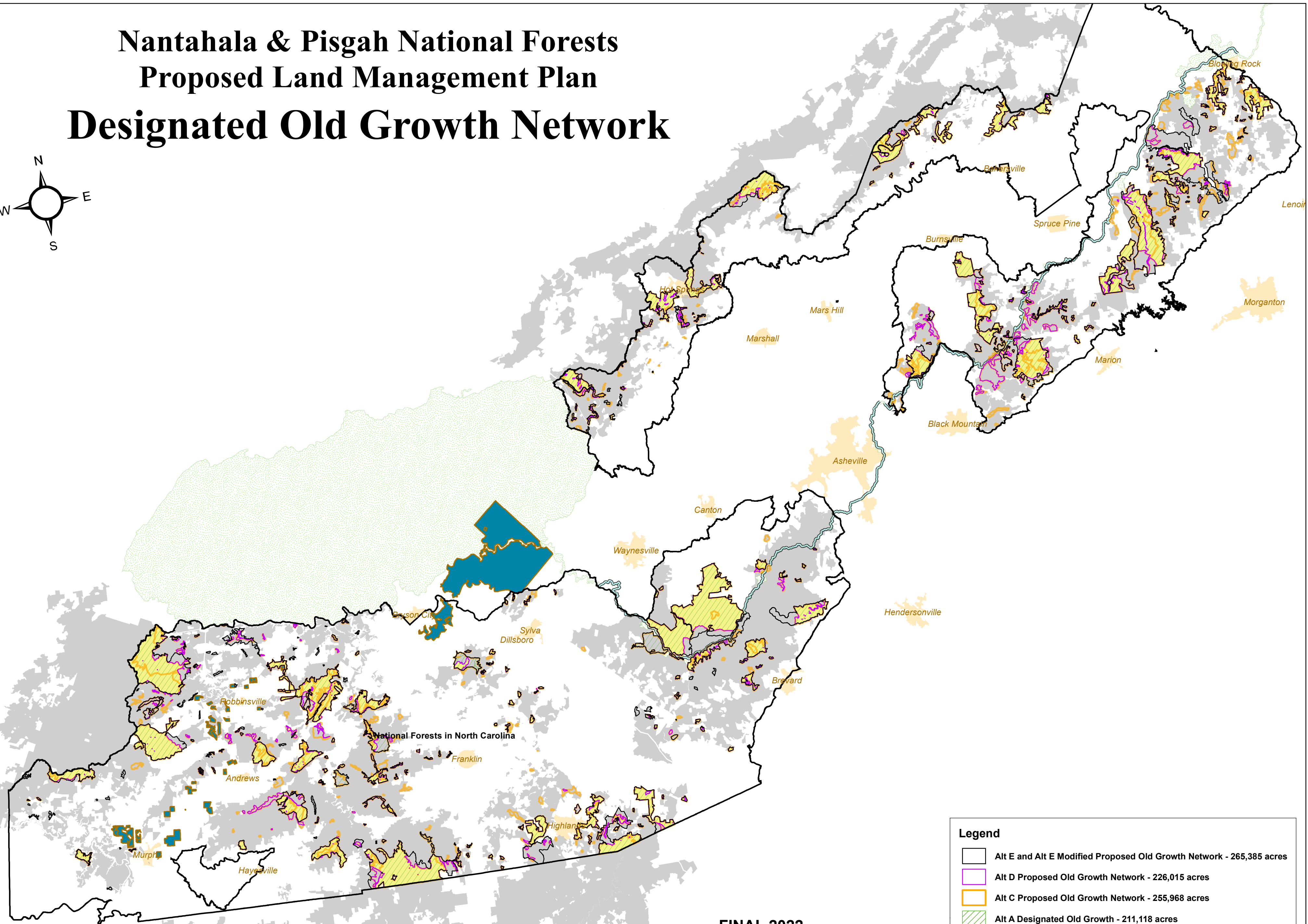
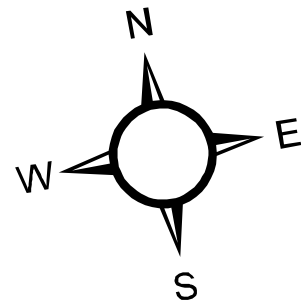
Land & Resource Management Plan Revision

Special Interest Areas

in Alternatives A, B, C, D, E, and E Modified



Nantahala & Pisgah National Forests Proposed Land Management Plan Designated Old Growth Network



FINAL 2022

DISCLAIMER: This data represents the best available data as of August 2021. It was collected from multiple sources and scales and is subject to change without notice.

Legend

- Alt E and Alt E Modified Proposed Old Growth Network - 265,385 acres
- Alt D Proposed Old Growth Network - 226,015 acres
- Alt C Proposed Old Growth Network - 255,968 acres
- Alt A Designated Old Growth - 211,118 acres
- Alt B Proposed Old Growth Network - 202,524 acres
- Eastern Band of Cherokee Indians
- National Park Lands
- US Forest Service



Forest Service Southern Region November 2022

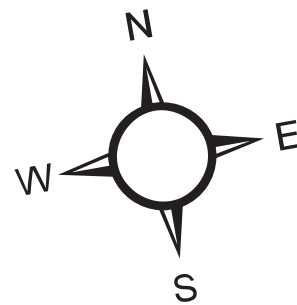


0 2.5 5 10 15 20 Miles

Nantahala & Pisgah National Forests

Proposed Land Management Plan

Priority Watersheds



Legend

Priority Watersheds

HU_12_Name

- | | |
|---|---|
| Alarka Creek | Lower Wilson Creek |
| Bent Creek-French Broad River | Middle Johns River |
| Buck Creek | Mills River |
| Caney Fork | North Fork French Broad River |
| Catheys Creek | Santeetlah Creek |
| Cedar Cliff Lake-Tuckasegee River | Shuler Creek |
| Cold Springs Creek-Pigeon River | South Fork Mills River |
| Davidson River | Spring Creek |
| Dillingham Creek | Upper Chattooga River |
| Fires Creek | Upper Cullasaja River |
| Headwaters Chattooga River | Upper Fontana Lake-Little Tennessee River |
| Headwaters West Fork Chattooga River | Upper Ivy Creek |
| Lake James-Catawba River | Upper Johns River |
| Lower Cullasaja River | Upper Wilson Creek |
| Lower Fontana Lake-Little Tennessee River | Wayehutta Creek-Tuckasegee River |
| Lower Johns River | Wolf Creek-Tuckasegee River |
| | Yellow Creek-Cheoah River |
| | National Park Lands |
| | US Forest Service |

FINAL 2021

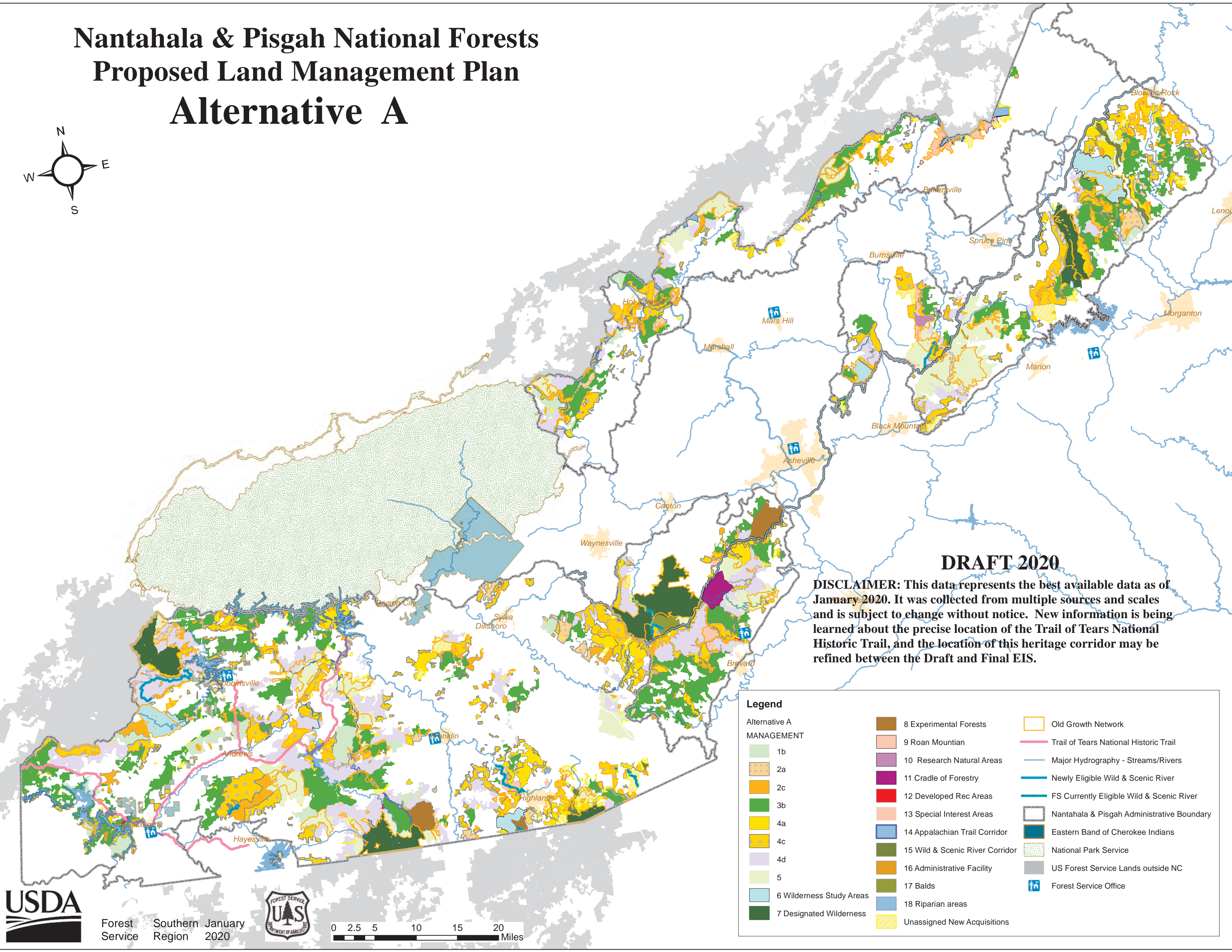
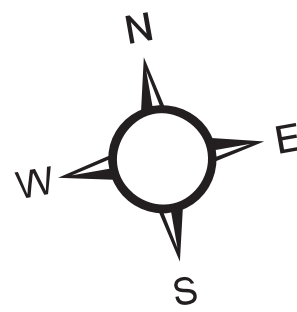
DISCLAIMER: This data represents the best available data as of August 2021. It was collected from multiple sources and scales and is subject to change without notice.



Forest Service Southern Region August 2021



Nantahala & Pisgah National Forests Proposed Land Management Plan Alternative A



DRAFT 2020

DISCLAIMER: This data represents the best available data as of January 2020. It was collected from multiple sources and scales and is subject to change without notice. New information is being learned about the precise location of the Trail of Tears National Historic Trail, and the location of this heritage corridor may be refined between the Draft and Final EIS.

Legend

Alternative A MANAGEMENT

- 1b
- 2a
- 2c
- 3b
- 4a
- 4c
- 4d
- 5
- 6 Wilderness Study Areas
- 7 Designated Wilderness

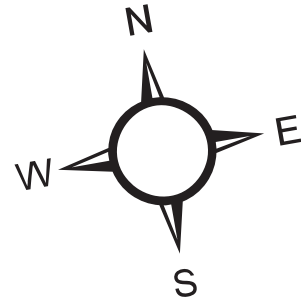
- 8 Experimental Forests
- 9 Roan Mountain
- 10 Research Natural Areas
- 11 Cradle of Forestry
- 12 Developed Rec Areas
- 13 Special Interest Areas
- 14 Appalachian Trail Corridor
- 15 Wild & Scenic River Corridor
- 16 Administrative Facility
- 17 Balds
- 18 Riparian areas
- Unassigned New Acquisitions

- Old Growth Network
- Trail of Tears National Historic Trail
- Major Hydrography - Streams/Rivers
- Newly Eligible Wild & Scenic River
- FS Currently Eligible Wild & Scenic River
- Nantahala & Pisgah Administrative Boundary
- Eastern Band of Cherokee Indians
- National Park Service
- US Forest Service Lands outside NC
- Forest Service Office

Nantahala & Pisgah National Forests

Proposed Land Management Plan

Alternative B



Legend

Alternative B

Management Areas

- Matrix
- Interface
- Backcountry
- Appalachian Trail, Blue Ridge Parkway, Byways, Heritage and Wild & Scenic River Corridors
- Special Interest Areas, Research Natural Areas
- Wilderness Study Area
- Recommended Wilderness
- Designated Wilderness
- Experimental Forests
- Roan Mountain
- Cradle of Forestry
- Proposed Old Growth Network
- Trail of Tears National Historic Trail
- Major Hydrography - Streams/Rivers
- Wild and Scenic Rivers
- Newly Eligible Wild & Scenic River
- FS Currently Eligible Wild & Scenic River
- Nantahala & Pisgah Administrative Boundary
- Eastern Band of Cherokee Indians
- National Park Service
- US Forest Service Lands outside NC
- Forest Service Office

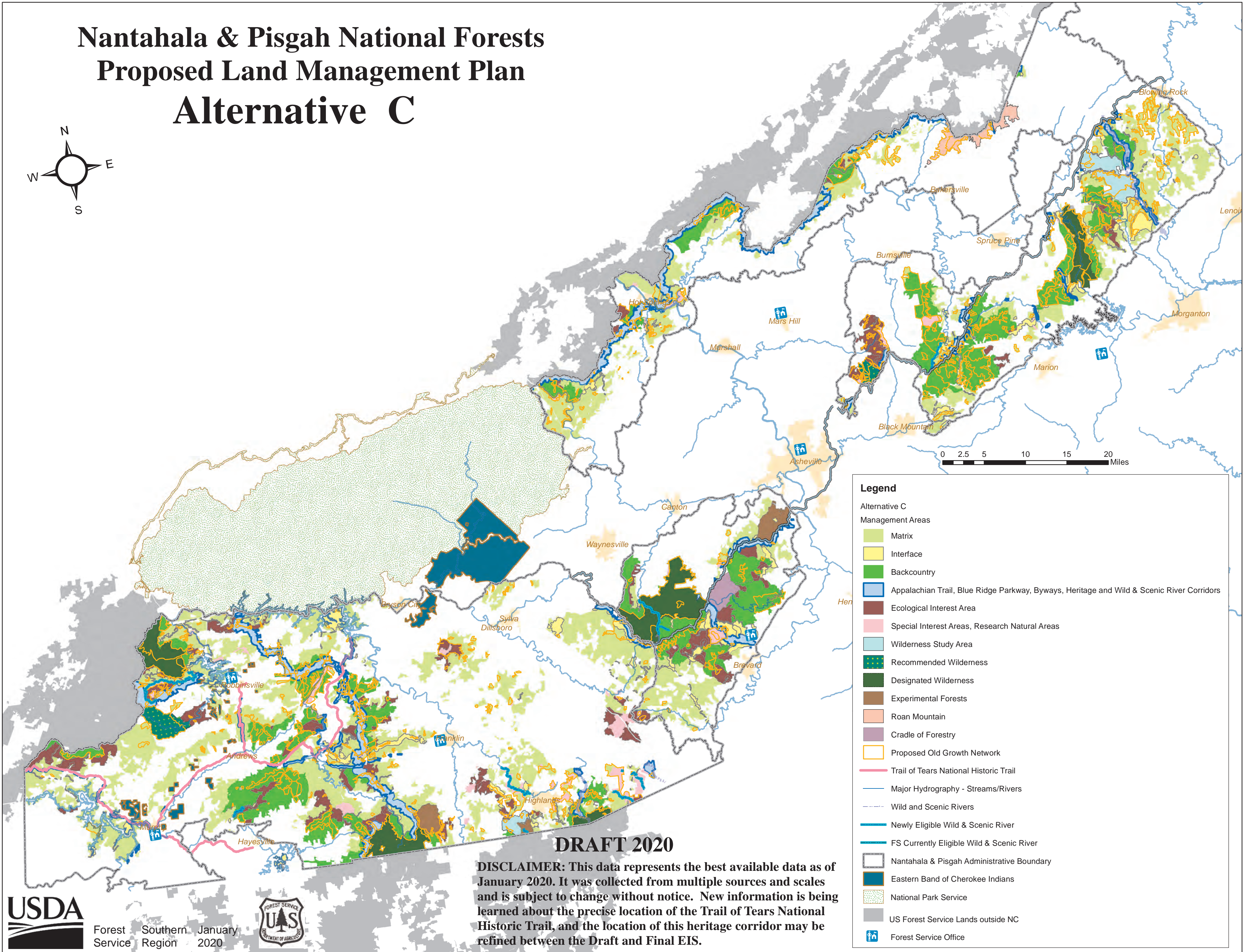
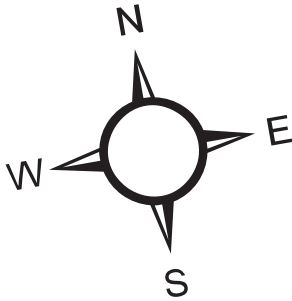
DRAFT 2020

DISCLAIMER: This data represents the best available data as of January 2020. It was collected from multiple sources and scales and is subject to change without notice. New information is being learned about the precise location of the Trail of Tears National Historic Trail, and the location of this heritage corridor may be refined between the Draft and Final EIS.

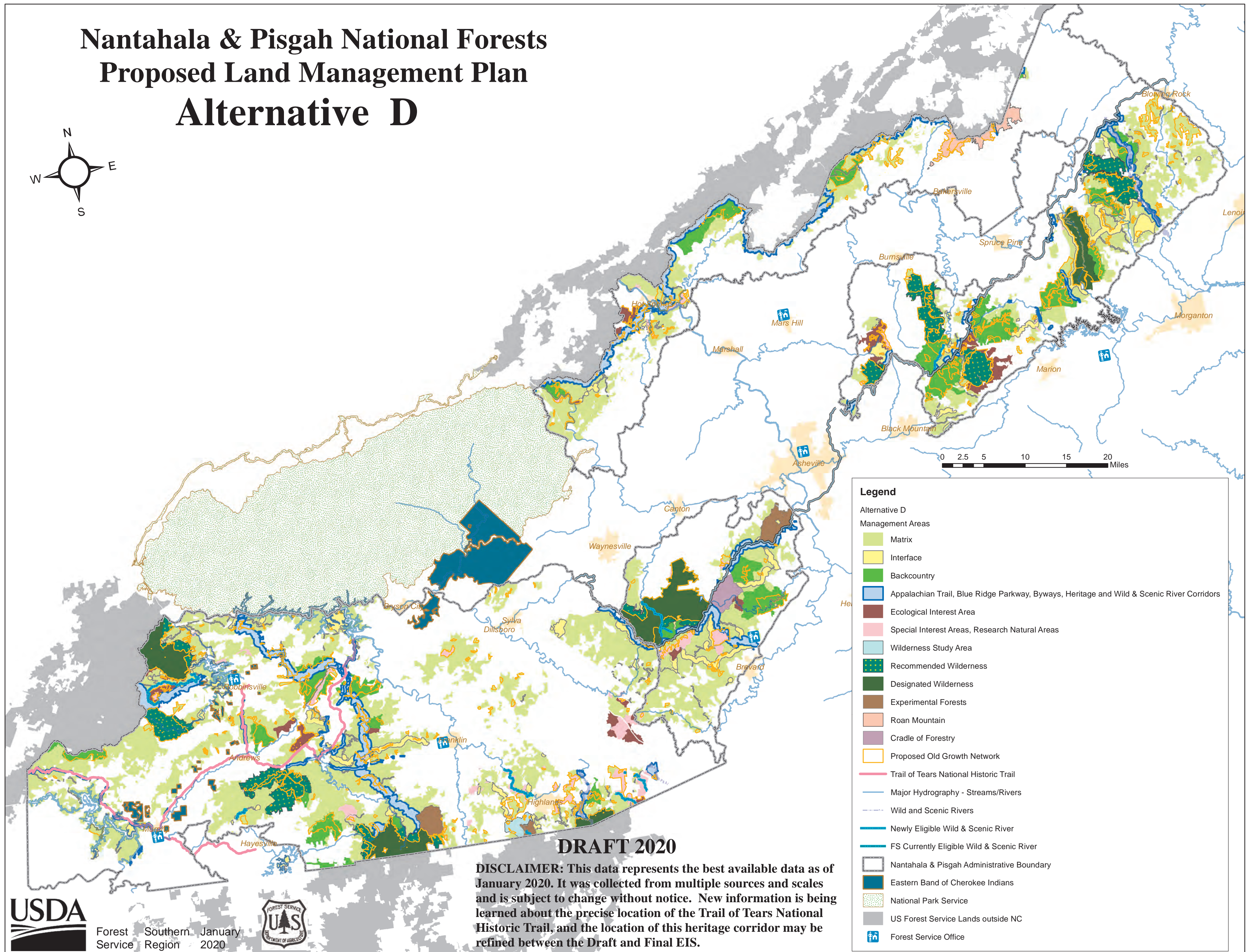
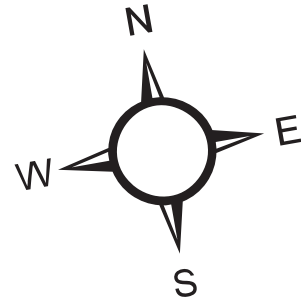
Nantahala & Pisgah National Forests

Proposed Land Management Plan

Alternative C



Nantahala & Pisgah National Forests Proposed Land Management Plan Alternative D



DRAFT 2020

DISCLAIMER: This data represents the best available data as of January 2020. It was collected from multiple sources and scales and is subject to change without notice. New information is being learned about the precise location of the Trail of Tears National Historic Trail, and the location of this heritage corridor may be refined between the Draft and Final EIS.

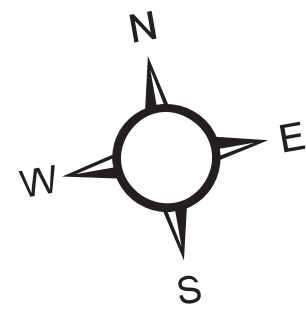


Forest Service Southern Region January 2020



Nantahala & Pisgah National Forests Land Management Plan

Alternative E



0 2.5 5 10 15 20 Miles

Legend

- Matrix
- Interface
- Backcountry
- Appalachian Trail, Blue Ridge Parkway, Byways, Heritage and Wild & Scenic River Corridors
- Ecological Interest Area
- Special Interest Area, Research Natural Area
- Designated Wilderness
- Wilderness Study Area
- Recommended Wilderness
- Experimental Forest
- Roan Mountain
- Cradle of Forestry
- Inventoried Roadless Areas
- Proposed Old Growth Network
- Major Hydrography - Streams/Rivers
- Wild and Scenic Rivers
- Newly Eligible Wild & Scenic River
- FS Currently Eligible Wild & Scenic River
- Nantahala & Pisgah Administrative Boundary
- Eastern Band of Cherokee Indians
- National Park Service
- US Forest Service Lands outside NC
- Forest Service Office



Forest Service Southern Region August 2021



FINAL 2021

DISCLAIMER: This data represents the best available data as of August 2021. It was collected from multiple sources and scales and is subject to change without notice.