

PURPOSE AND CONTENTS OF THIS MAP

The designations shown on this motor vehicle use map (MVUM) were made by the responsible official pursuant to 36 CFR 212.51; are effective as of the date on the front cover of the MVUM; and will remain in effect until superseded by next year's MVUM.

Robert Holton
Forest Supervisor, Colville National Forest

It is the responsibility of the user to acquire the current MVUM. This MVUM shows the National Forest System roads, National Forest System trails, and the areas on National Forest System lands in the COLVILLE NATIONAL FOREST that are designated for motor vehicle use pursuant to 36 CFR 212.51. This MVUM also identifies the vehicle classes allowed on each route and in each area, and any seasonal restrictions that apply on those routes and in those areas.

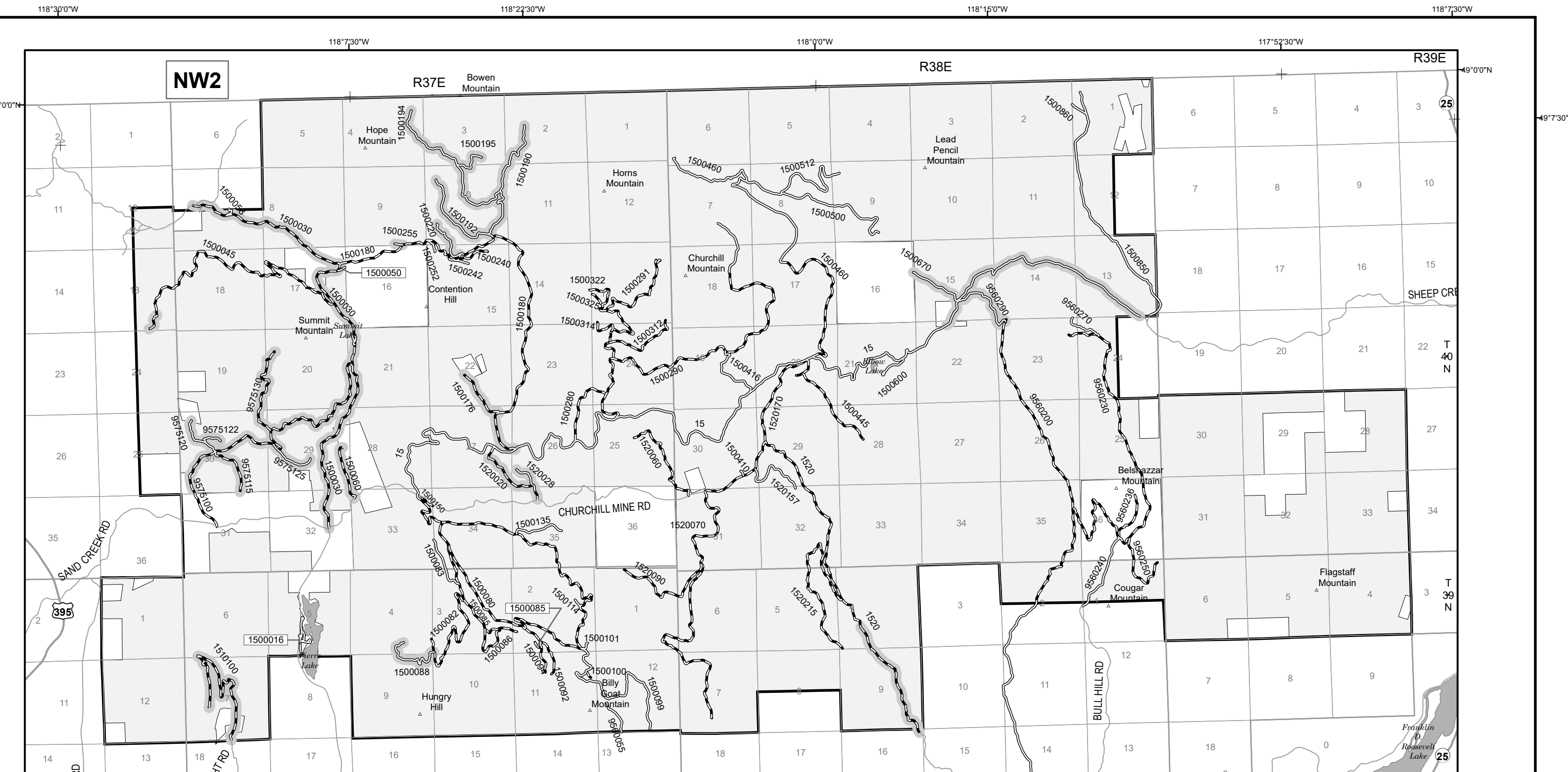
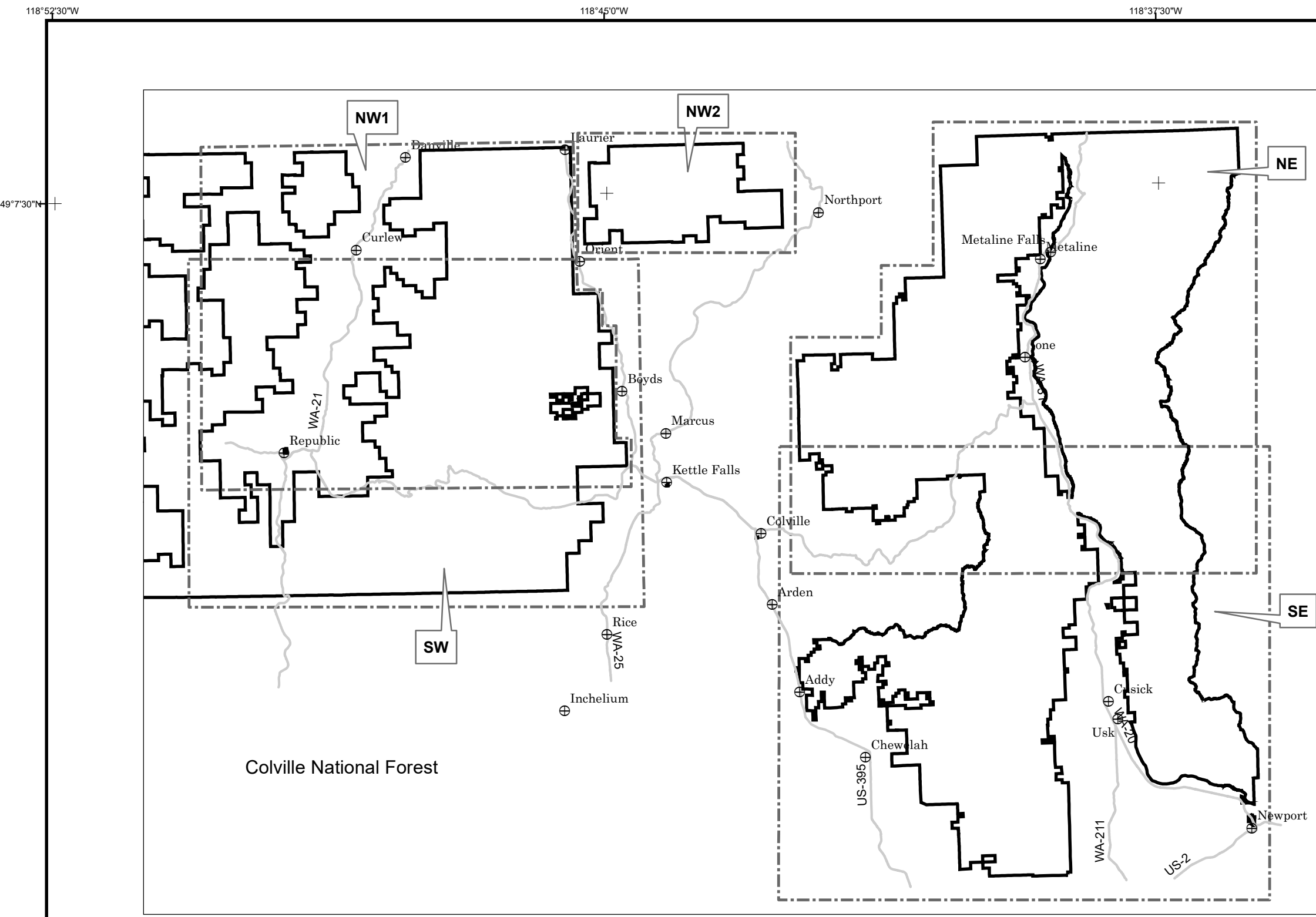
Designation of a road, trail, or area for motor vehicle use by a particular class of vehicle under 36 CFR 212.51 should not be interpreted as encouraging or inviting use or implying that the road, trail, or area is passable, actively maintained, or safe for travel. Motor vehicle designations include parking along designated routes and at facilities associated with designated routes when it is safe to do so and when not causing damage to National Forest System resources. Seasonal weather conditions and natural events may render designated roads and trails impassable for extended periods. Designated areas may contain dangerous or impassable terrain. Many designated roads and trails may be passable only by high-clearance vehicles or four-wheel-drive vehicles. Maintenance of designated roads and trails will depend on available resources, and many may receive little maintenance.

This motor vehicle use map identifies those roads, trails, and areas designated for the motor vehicle use under 36 CFR 212.51 for the purpose of enforcing the prohibition at 36 CFR 261.13. This is a limited purpose. The other public roads are shown for information and navigation purposes only and are not subject to designation under the Forest Service travel management regulation.

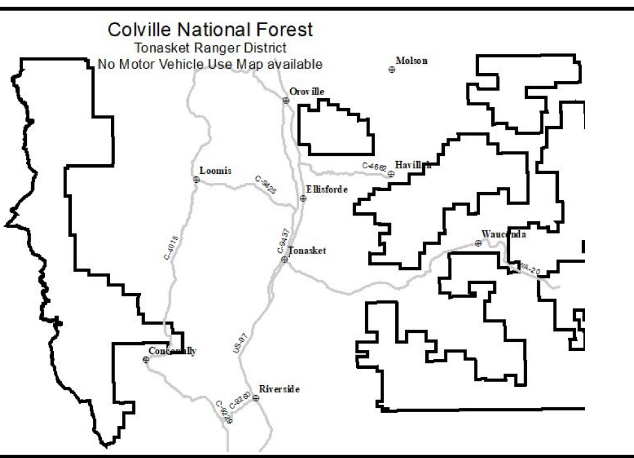
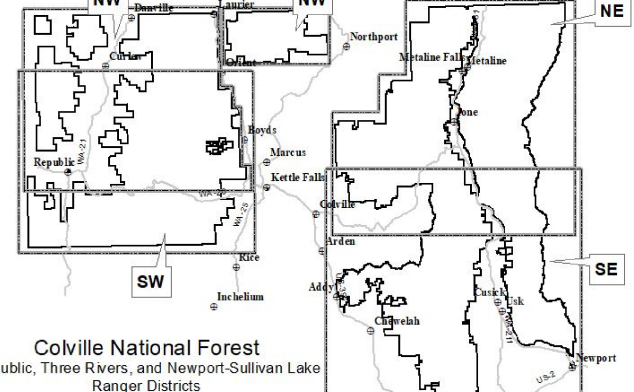
These designations apply only to National Forest System roads, National Forest System trails, and areas on National Forest System lands.

Legend

- Roads Open to Highway Legal Vehicles
- Roads Open to All Vehicles
- Trails Open to All Vehicles
- Trails Open to Vehicles 50' or Less in Width
- Trails Open to Motorcycles Only
- Seasonal Designation (See Table)
- Highways, U.S. State
- Other Public Roads
- Motorized Trailhead
- Peaks
- Forest or Unit Boundary
- National Forest System Lands
- Non-National Forest System Lands within the National Forest
- Wilderness Areas
- Township and Range Lines
- Section Lines
- Lakes and Rivers



VICINITY MAPS



INFORMATION SOURCES

Colville National Forest Supervisor's Office
765 S. Main, Colville, WA 99114
(509) 684-7500
Toll free: 877-727-8704

Three Rivers Ranger District
255 W. 11th, Kettle Falls, WA 99141
(509) 738-7700

Republic Ranger District
650 East Delaware Ave., Newport, WA 99166
(509) 775-4400

Newport-Sullivan Lake Ranger District
315 North Warren, Newport, WA 99156
(509) 447-7500

Tonasket Ranger District
1 West Winnes, Tonasket, WA 98855
(509) 456-2186

Website: www.fs.fed.us/r/cv



treadlightly!
LEAVING A GOOD IMPRESSION

Travel and recreate with minimum impact. Respect the environment and the rights of others. Educate yourself, plan, and prepare before you go. Allow for future use of the outdoors by leaving it better than you found it. Discover the rewards of responsible recreation. For more information on Tread Lightly!, go to www.treadlightly.org or call 1-800-966-9900.

The U.S. Department of Agriculture (USDA) prohibits discrimination in all its programs and activities on the basis of race, color, national origin, age, disability, and where applicable, sex, marital status, familial status, parental status, religion, sexual orientation, genetic information, political beliefs, reprisal, or because all or part of an individual's income is derived from any public assistance program. (Not all prohibited bases apply to all programs.) Persons with disabilities who require alternative means for communication of program information (Braille, large print, audiotape, etc.) should contact USDA's TARGET Center at (202) 720-2600 (voice and TDD). To file a complaint of discrimination, write to USDA, Director, Office of Civil Rights, 1400 Independence Avenue, S.W., Washington, D.C. 20250-9410, or call (800) 795-5272 (voice) or (202) 720-6382 (TDD). USDA is an equal opportunity provider and employer.

PROHIBITIONS

It is prohibited to possess or operate a motor vehicle on National Forest System lands in the COLVILLE NATIONAL FOREST other than in accordance with these designations (CFR 261.13).

Violators of 36 CFR 261.13 are subject to a fine of up to \$5,000, imprisonment for up to 6 months, or both (18 U.S.C. 3571(e)). This prohibition applies regardless of the presence or absence of signs.

This map does not display nonmotorized uses, over-sites, or other facilities and attractions on the COLVILLE NATIONAL FOREST. Obtain forest visitor information from the local national forest office.

Designated roads, trails and areas may also be subject to temporary emergency closures. As a visitor, you must comply with signs notifying you of such restrictions. A national forest may issue an order to close a road, trail or area on a temporary basis to protect the life, health, or safety of forest visitors or the natural or cultural resources in these areas. Such a temporary and/or emergency closure is consistent with the Travel Management Rule (36 CFR 212.52 (b)), 36 CFR 261 (subpart B).

The designation "road or trail open to all motor vehicles" does not supersede State traffic law.

EXPLANATION OF LEGEND ITEMS

Roads Open to Highway Legal Vehicles Only:
These roads are open only to motor vehicles licensed under State law for general operation on all public roads within the state.

Roads Open to All Vehicles:
These roads are open to all motor vehicles, including smaller off-highway vehicles that may not be licensed for highway use (but not to oversize or overweight vehicles under State traffic law).

Trails Open to All Vehicles:
These trails are open to all motor vehicles, including both highway legal and nonhighway legal vehicles.

Trails Open to Vehicles 50 inches or Less in Width:
Trails open only to motor vehicles less than 50 inches in width at the widest point on the vehicle.

Trails Open to Motorcycles Only:
These trails are open only to motorcycles. Sidecars are not permitted.

Seasonal Designation:
This symbol, used in conjunction with one of the other road or trail symbols, indicates that the road or trail is open only during certain portions of the year. Refer to Seasonal and Special Designation Table for further instructions.

Other Public Roads and Trails:
Highways, U.S. State
Other Public Roads

These symbols are used to show routes the Forest Service does not have jurisdiction over and has not designated for motorized use. These symbols are part of the reference layers showing connections to towns and cities outside the forest boundary.

Motorized Trail Access:
This symbol indicates a trailhead for access to a motorized route. Not all motorized routes have trailheads and those that do may range from primitive to developed.

Motor Vehicle Use Maps (MVUM) now available as PDF maps!

If you own a smartphone or tablet, you can take the Colville National Forest MVUMs with you.



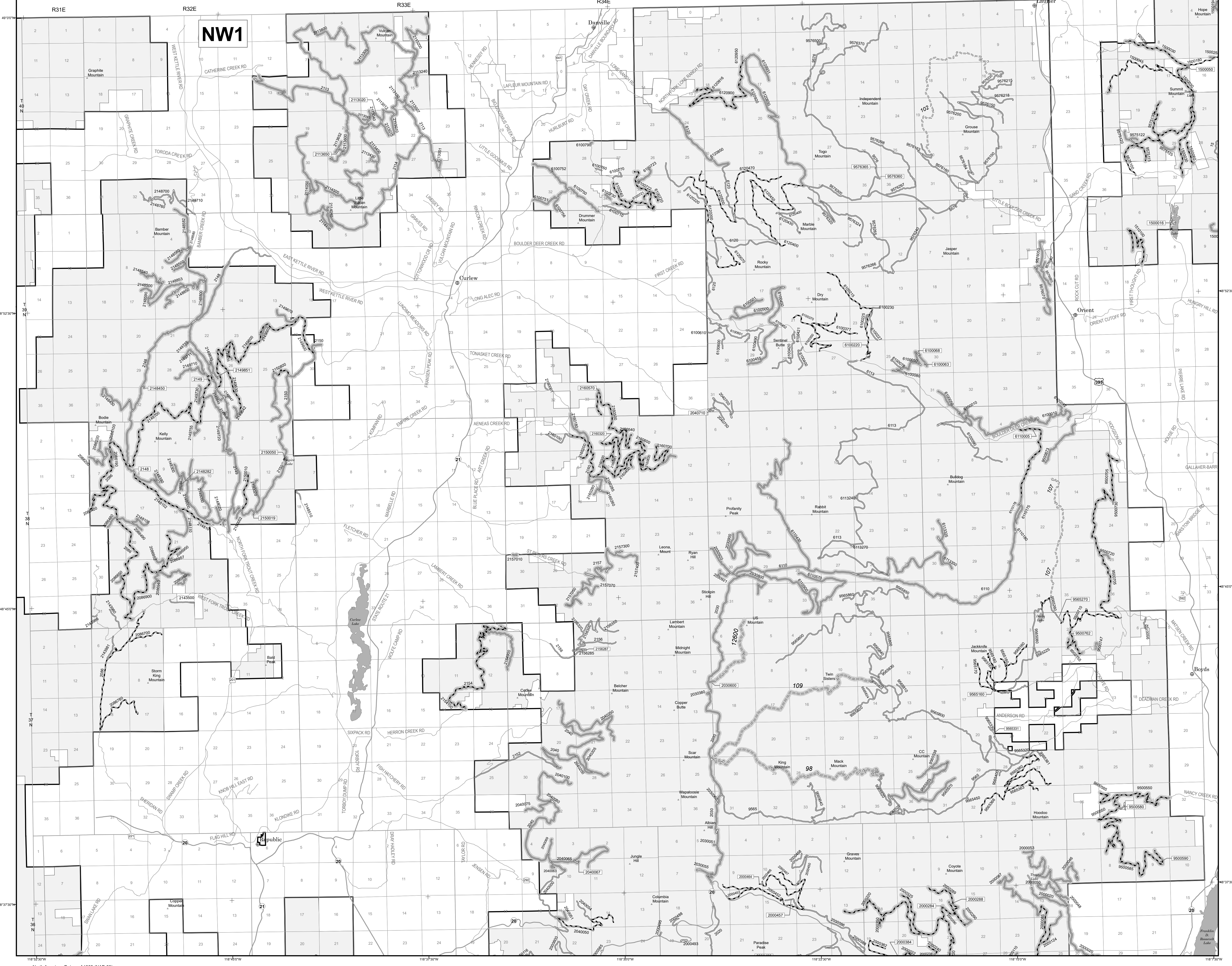
Download the free Avenza PDF Maps app available at <http://www.avenza.com/pdfmaps/> to your mobile device using the QR code above. Search for "Colville National Forest MVUM" to download MVUMs for Northeast, Northwest, Southeast and Southwest parts of the Colville National Forest.

With the app and maps installed on your mobile device, you will be able to measure distances and areas, plot waypoints, and view and zoom into maps offline. If your device has GPS capability, you can even view and track your location on the maps.

Through a no-cost contract with Avenza Systems, Inc., the USDA Forest Service has made electronic versions of its Motor Vehicle Use Maps (MVUMs) available as free downloads for smartphones and tablets.

DISPERSED CAMPING
Except where specifically prohibited, motor vehicle use off of designated roads and trails for the purpose of dispersed camping is permitted up to 300 feet from the centerline of roads or trails on the Colville National Forest. Refer to the list of roads and trails on the backside of the map for any restrictions that may apply.

PARKING
Motor vehicles may be parked up to 30 feet from the edge of the road surface when it is safe to do so without causing damage to NFS resources or facilities, unless prohibited by state law, a traffic sign, or an order (36 CFR 261.54).



37 National Forest Distinctive Route Marker

3750 National Forest Distinctive Route Marker

Distinctive and Horizontal Route Markers
Distinctive route markers typically consist of two signs and they identify significant, highly traveled roads through the forest passable by passenger cars during the normal season of drive.

Horizontal route markers typically consist of four signs with the first two signs identifying the distinctive route that is branched off of. They identify all other forest roads passable by passenger cars during the normal season of drive.

These are all considered higher level roads.

Vertical Route Markers
Vertical route markers identify roads that are not maintained for travel in standard passenger cars. These markers typically identify the higher level road they branch off of with the higher level road number displayed horizontally above the vertical number.

3750
3
2
1
0

Explanation of road numbers for roads not maintained for standard passenger cars as shown on this map:
On the ground: High Level Rd # 375022 2 digit road number
On the ground: Local Road # 1