

PRAIRIE DOG HUNTING INFORMATION GRAND RIVER NATIONAL GRASSLAND

SEASON: Open year-round on private and Federal lands.

Attached is a map of the black-tailed prairie dog colonies on the Grand River Ranger District in Perkins and Corson Counties. We also have a larger visitor map available for \$14.00 or a free motor vehicle use map which shows the roads open for public travel. Please stay on designated roads when driving on the grasslands.

While hunting prairie dogs, please be aware that burrowing owls may also use prairie dog habitat and that shooting of this species is not allowed.

The license required to hunt prairie dogs is a predator/varmint license or any current year South Dakota hunting license. You may purchase a license in Lemmon at Geo's Corner on Main Street. To find out more about the licenses required or to purchase a license online, please visit gfp.sd.gov.

Camping on the National Grasslands is allowed, however, we do not have any developed campgrounds. Developed campgrounds are available at Shadehill Recreation Area.

Lemmon has two motels: Lemmon Country Inn (605) 374-3711 and Dakota Lodge (605) 374-7815. Lemmon also has several restaurants available.

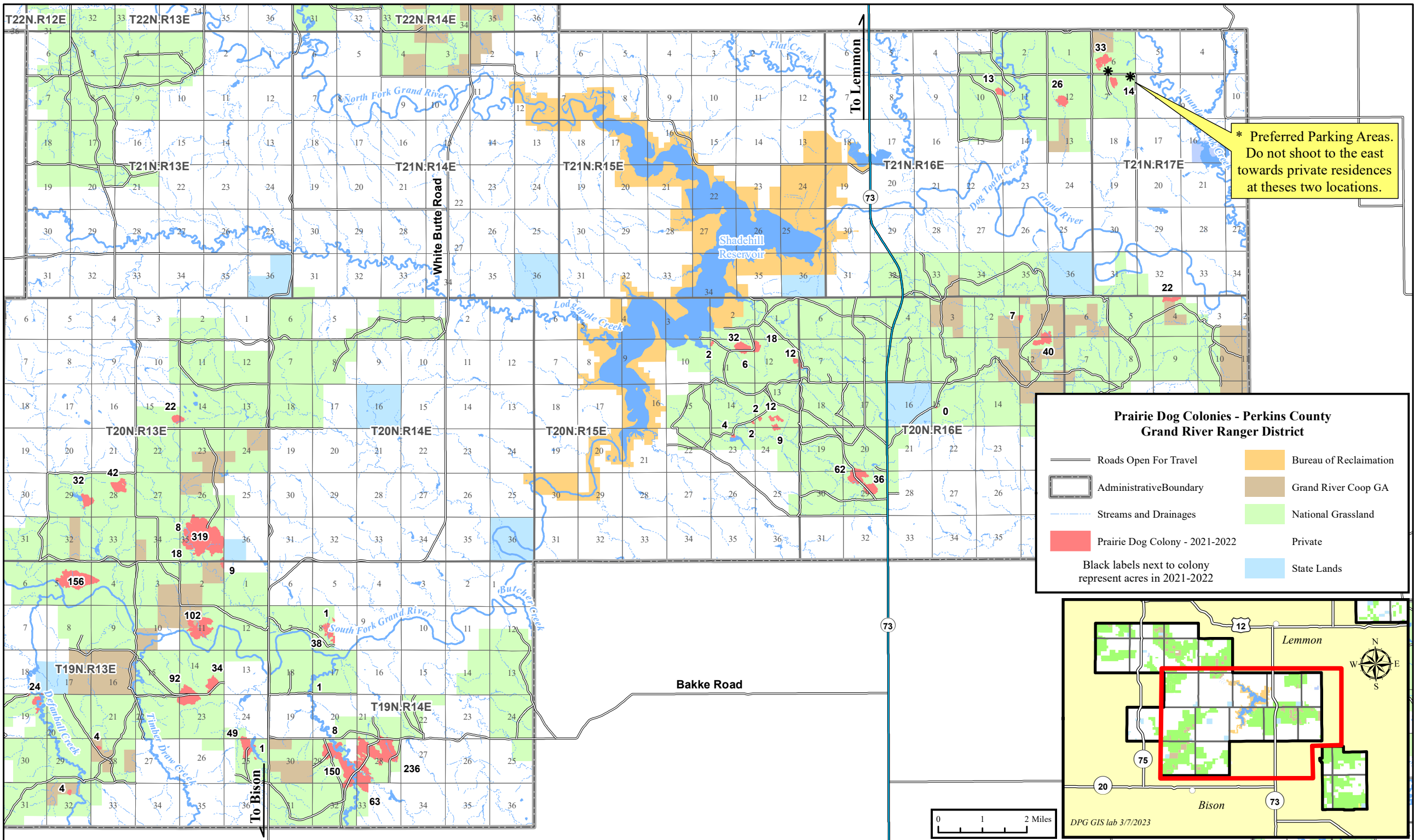
If you would like more information, please feel free to call or stop in. Our telephone number is (605) 374-3592.

Grand River Ranger District
1005 5th Avenue West
P.O. Box 390
Lemmon, SD 57638

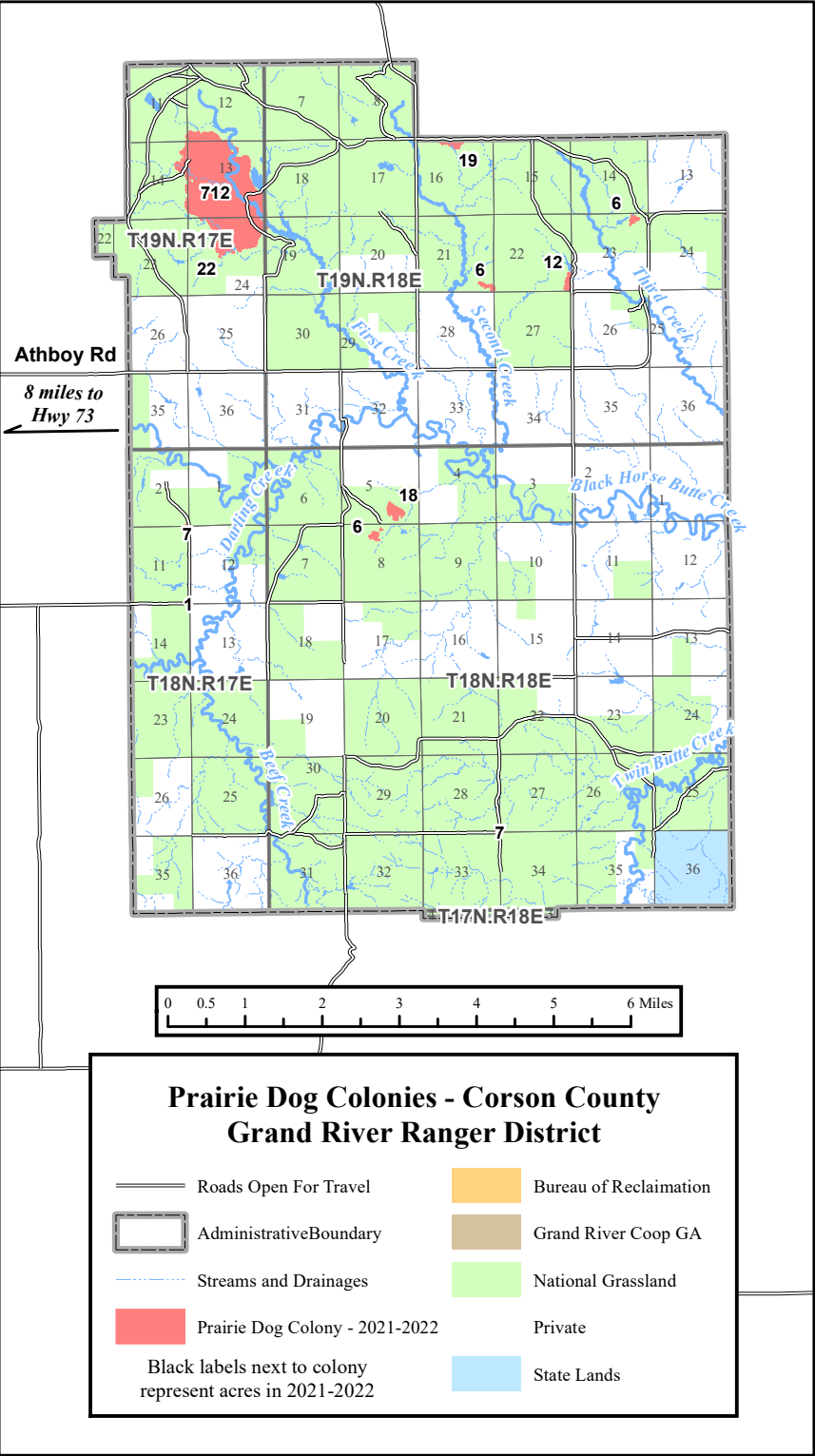
Enjoy Your National Grasslands!

Download a free [prairie dog colony navigation map](#) for use with the Avenza App by scanning this QR code.





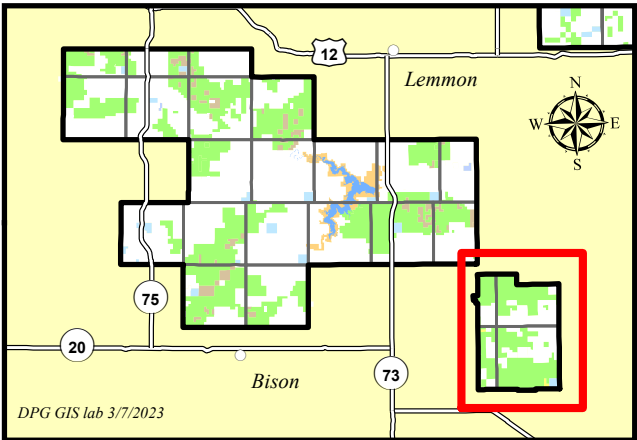
* Preferred Parking Areas.
Do not shoot to the east
towards private residences
at these two locations.



DO NOT SHOOT



The burrowing owl is a small ground-dwelling bird standing less than one foot tall. It is brown with pale spots. They are often seen standing at the mouth of an abandoned prairie dog burrow, in which they nest and raise an average of 7-9 young. Please be aware of their presence and **DO NOT SHOOT** them. The burrowing owl population is declining and killing them or any other raptor can result in significant fines.



General Prairie Dog Hunting Information

- Season - Open Year Round
- There are no daily or possession limits
- Shooting hours are from sunrise to sunset

For more information regarding prairie dogs on Forest Service land, or for a more detailed map, contact the

Grand River Ranger District
1005 5th Ave. W
P.O. Box 390
Lemmon, SD 57638
(605) 374-3592

HUNTING LICENSE INFORMATION

- South Dakota Hunting and Trapping Handbook
- www.gfp.sd.gov
- (605) 223-7660

MOTOR VEHICLE TRAVEL

Please refer to the Grand River National Grassland Motor Vehicle Use Map for designated travel routes.

REMEMBER: PACK IT IN, PACK IT OUT

Did you know
you can access maps of the
National Grasslands
through the free Avenza
Maps Mobile app?



www.avenzamaps.com

**Motor Vehicle Use Maps
(MVUM) for the Grand River
and Cedar River National
Grasslands are free to down-
load! [Click Here](#) or scan the
QR code below.**



Grand River



Cedar River

The Motor Vehicle Use Map (MVUM) displays National Forest System (NFS) routes (roads and trails) or are-as designated as open to motorized travel. It is your responsibility to stay on designated routes for motor vehicle use.

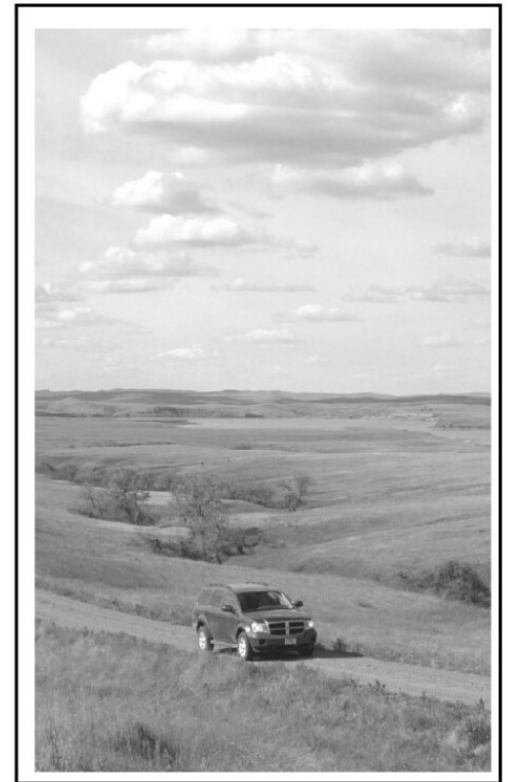
Routes not shown on the MVUM are not open to public motor vehicle travel. Routes designated for motorized use may not always be signed on the ground but will be identified on the MVUM. It will be the public's responsibility to reference the MVUM to stay on designated routes for motor vehicle use.

For additional reference MVUM is best used in conjunction with a Forest Visitor Map or other detailed map. The MVUM is free to the public at all Forest Service offices and is available online.

For more information contact:

Grand River Ranger District
1005 5th Ave W.
Lemmon, SD 57638
605-374-3592

Motor Vehicle Use Map Grand River National Grassland



America's Great Outdoors

South Dakota

Forest  Service

2007

United States Department of Agriculture