

R 33 W

R 32 W

R 31 W

R 30 W

R 29 W

R 28 W

R 27 W

R 26 W

T16N

T15N

T14N

T13N

35°50'0"N

35°45'0"N

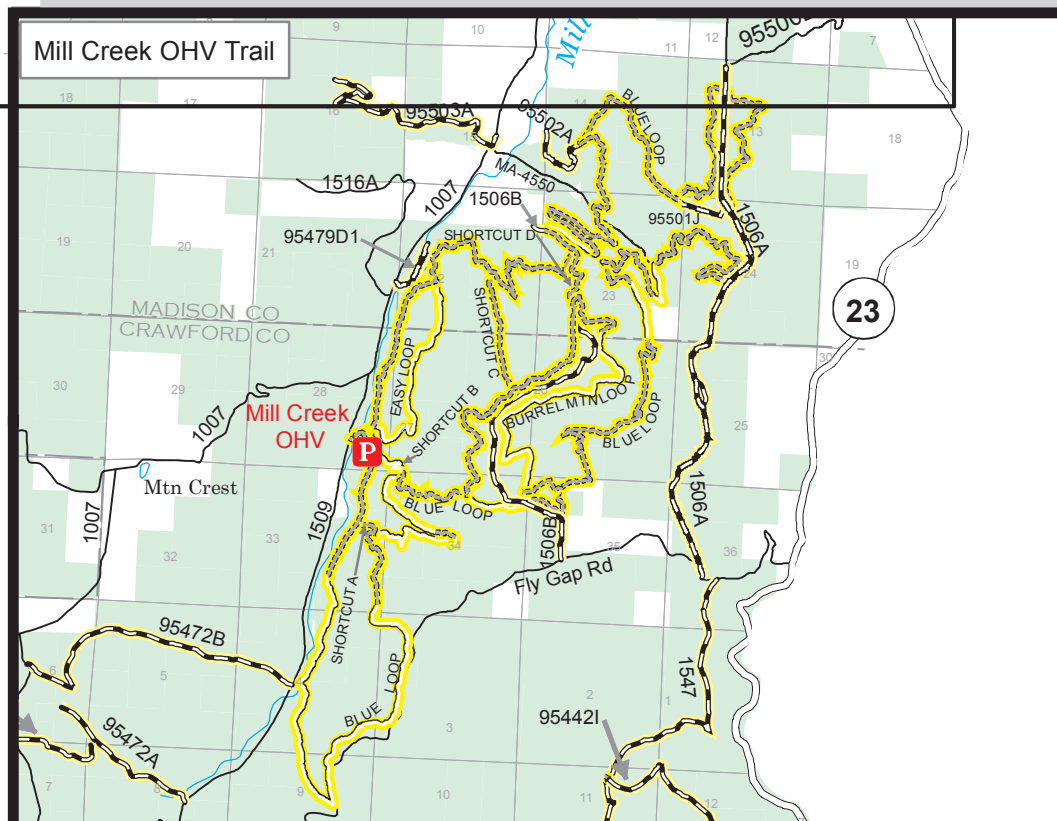
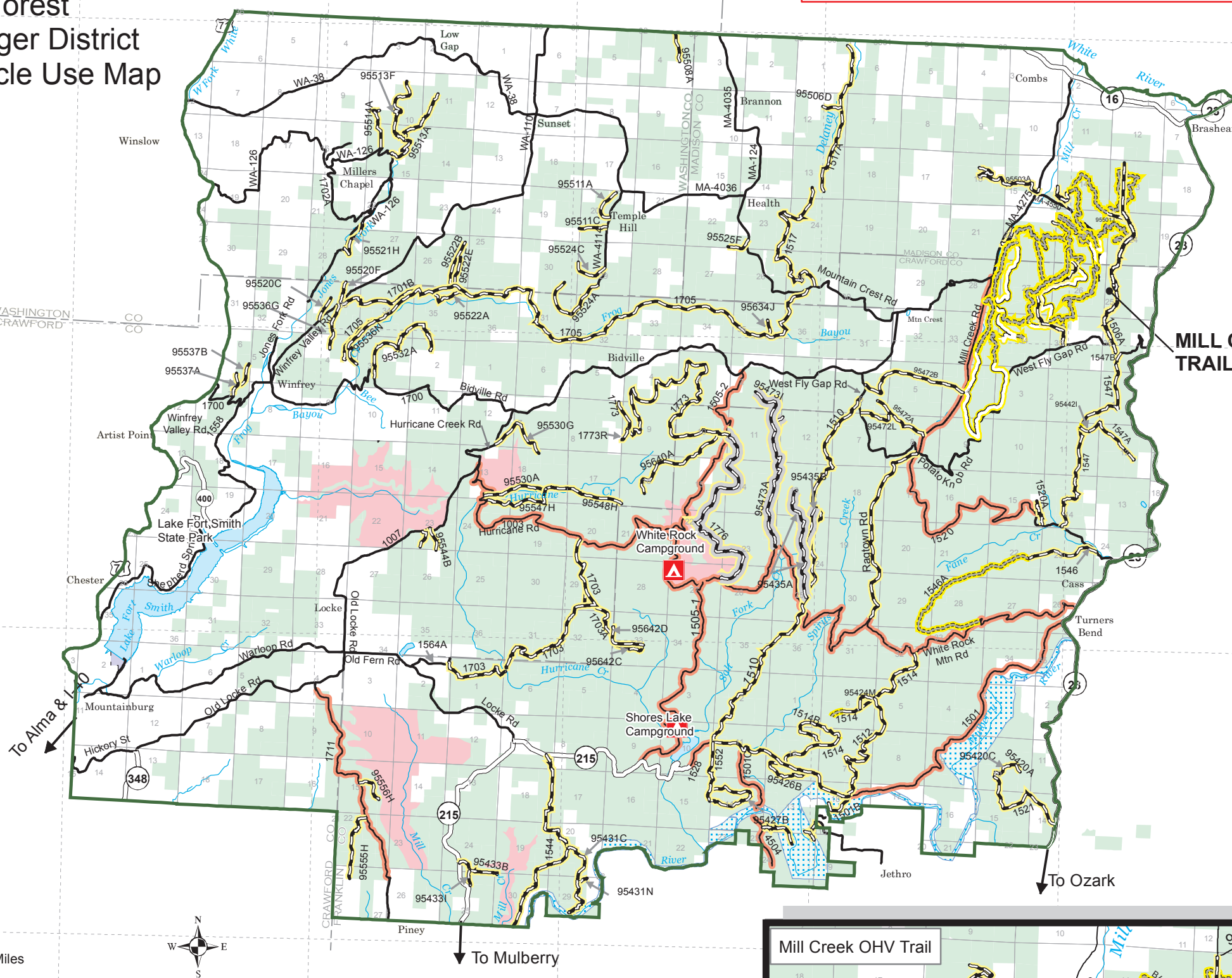
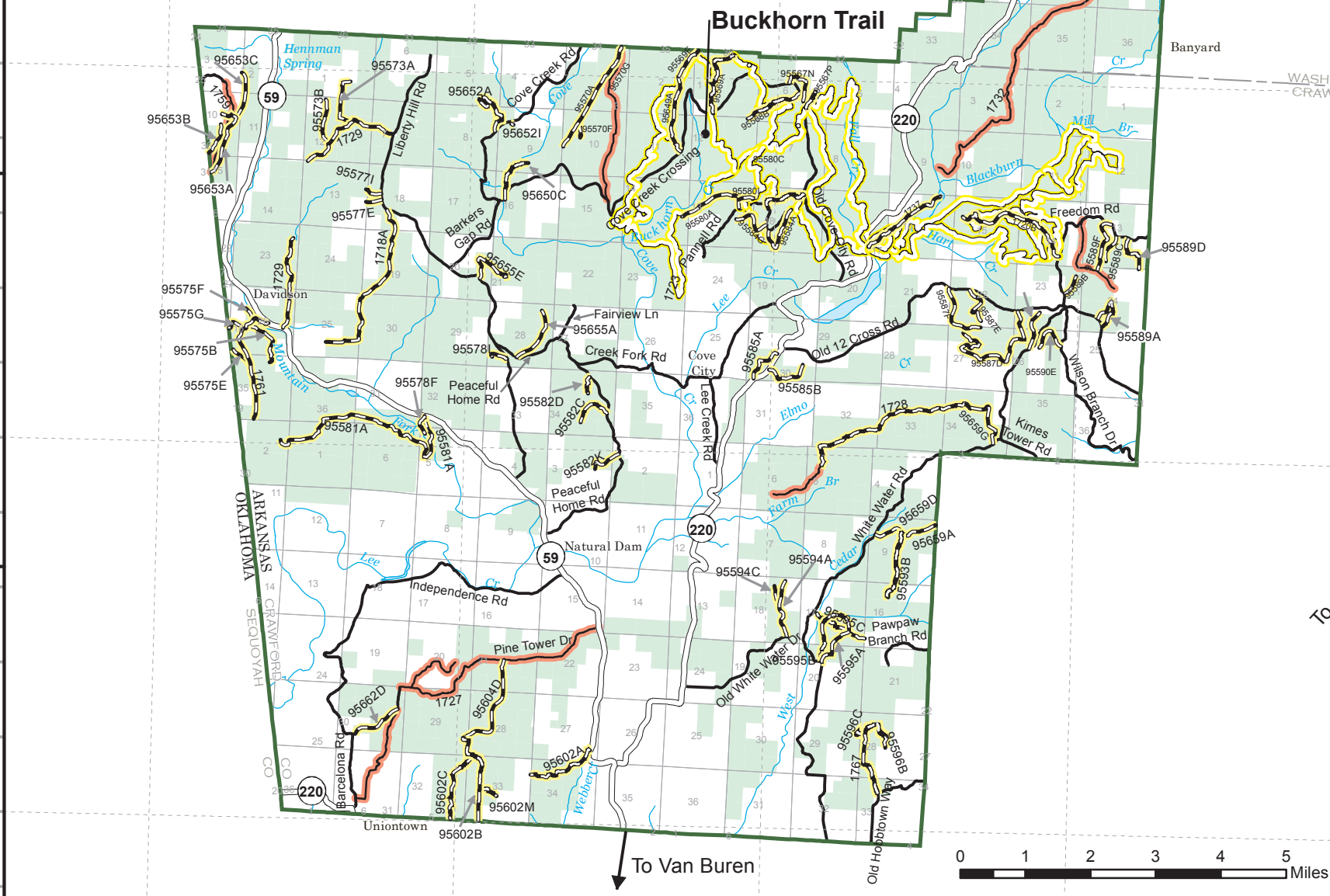
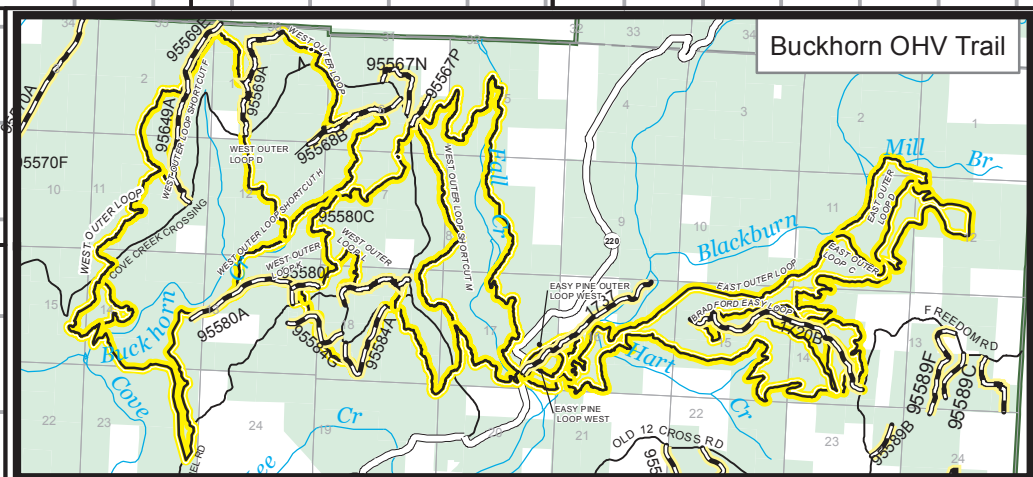
35°40'0"N

**\*\*Routes could be signed as "Closed" on the ground due to hazards - please check with district office at (479) 667-2191 to obtain a list of closed OHV routes.\*\***

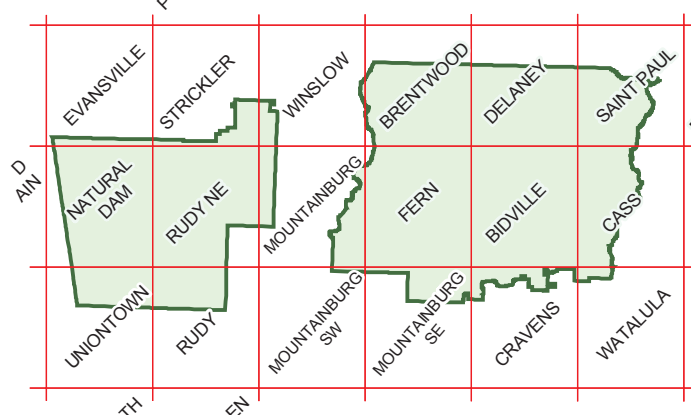


# MAP A

## Ozark National Forest Boston Mountain Ranger District 2021 Off-Highway Vehicle Use Map



### INDEX TO TOPOGRAPHIC MAPS



Topographic maps are available from the Branch of Distribution  
U.S. Geological Survey, Box 25286, Denver Federal Center, Denver, CO 80225  
or  
www.usgs.gov

- Roads Open to All Vehicles
- Seasonal Roads Open to All Vehicles  
(Check with local district office for closure dates.)
- Seasonal Roads Open to Highway Legal Vehicles Only  
(Check with local district office for closure dates.)
- Trails Open to Off Highway Vehicles Only
- Forest Service Jurisdiction Roads Open to Highway Legal Vehicles Only
- National Forest Boundary
- County Boundary
- State Highway
- County Roads
- Streams
- Ozark National Forest
- Special Interest Areas
- Wild and Scenic River Corridor
- Forest Service Campgrounds
- Parking Area
- Supervisor's Office
- ROUTE MARKERS**
- Interstate
- U.S.
- State
- County
- National Forest

