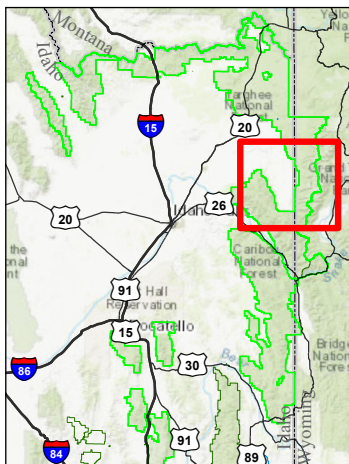
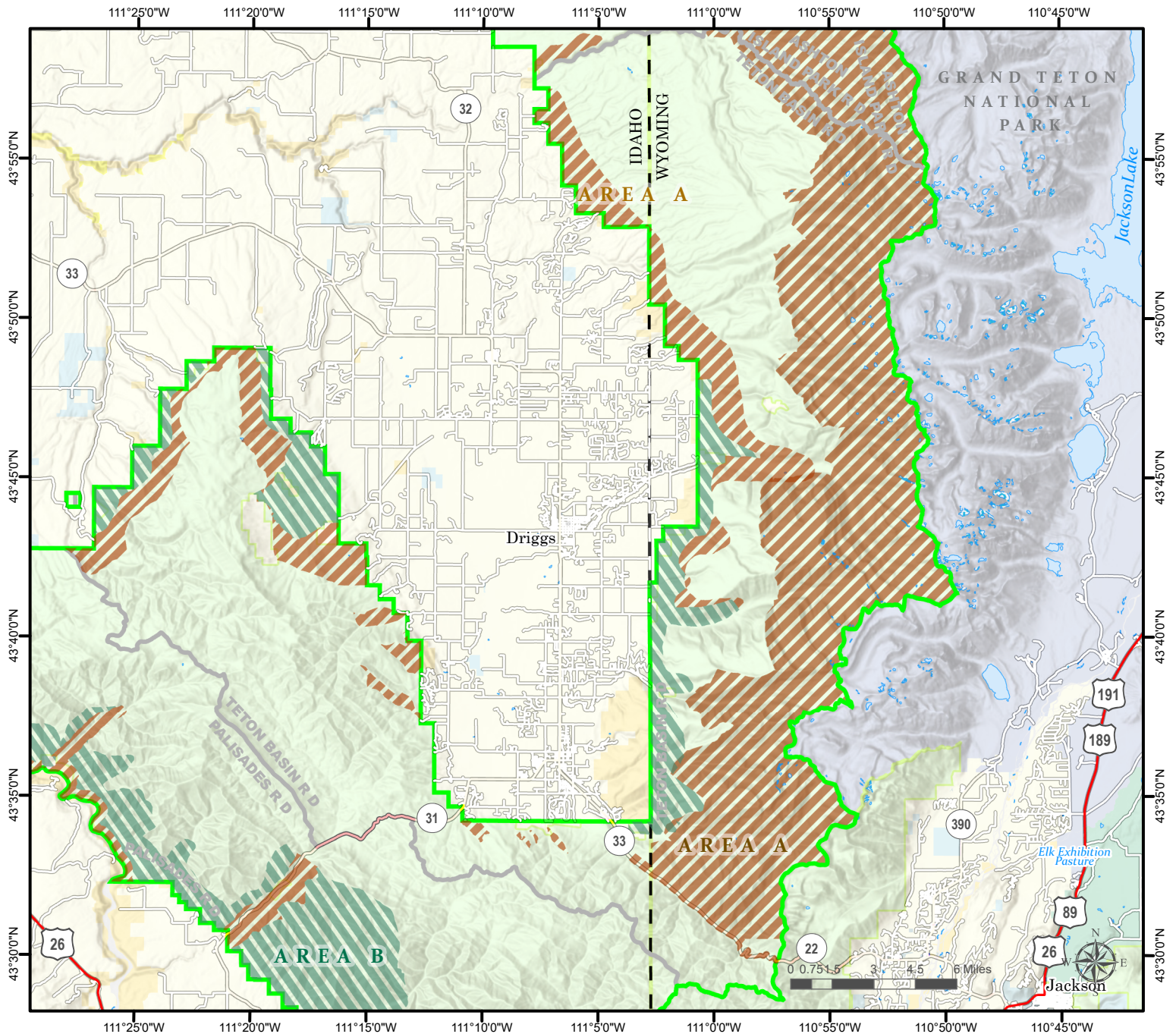


Caribou-Targhee National Forest

Winter Range Restrictions - Teton Basin Ranger District

Order Number - 04-15-23-215c

Exhibit A



- Described Area A – Closed to cross-county over-snow travel
- Described Area B – Closed to human entry
- Forest Service
- Bureau of Land Management
- Fish and Wildlife Service
- National Park Service
- Bureau of Reclamation
- State
- Local Government
- Private
- Undetermined
- State Boundary
- Primary Highway
- Secondary Highway
- Paved Roads
- Dirt (Not Paved)

The USDA Forest Service makes no warranty, expressed or implied, including the warranties of merchantability and fitness for a particular purpose, nor assumes any legal liability or responsibility for the accuracy, reliability, completeness or utility of these geospatial data, or for the improper or incorrect use of these geospatial data. These geospatial data and related maps or graphics are not legal documents and are not intended to be used as such. The data and maps may not be used to determine title, ownership, legal descriptions or boundaries, legal jurisdiction, or restrictions that may be in place on either public or private land. Natural hazards may or may not be depicted on the data and maps, and users should exercise due caution. The data are dynamic and may change over time. The user is responsible to verify the limitations of the geospatial data and to use the data accordingly.

Prepared by: Caribou-Targhee National Forest
Idaho Falls, Idaho

Produced: 4/7/2023 By: cbeck01

Projection: UTM 12 N, NAD83

File: T:\FS\INFS\CaribouTarghee\Program\6800\InformationMgmt\GIS\ClosureOrders\ForestOrders_2023\TargheeWinterRange2023\TargheeWinterRange2023.aprx