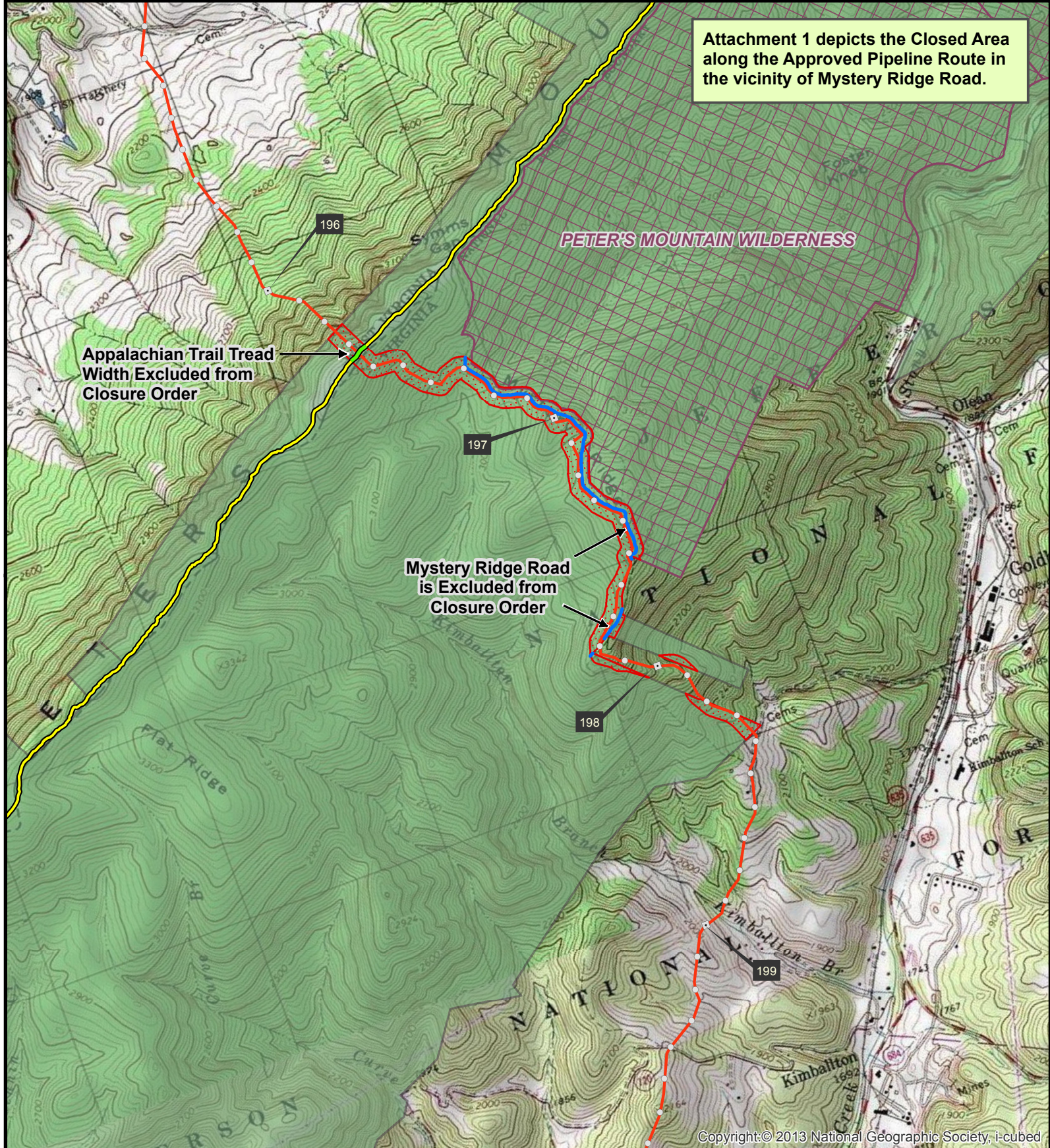
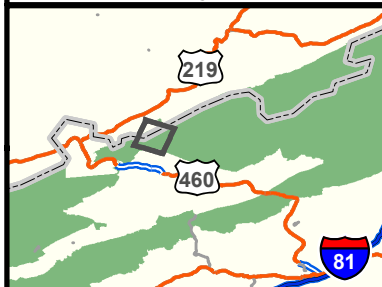


Attachment 1 depicts the Closed Area along the Approved Pipeline Route in the vicinity of Mystery Ridge Road.



Copyright:© 2013 National Geographic Society, i-cubed

Vicinity Map



References

Background data is ESRI NGS, Topo, US data, supplemented with Mountain Valley Pipeline project data and Forest Service Lands Status Records System ownership and boundary data.

Disclaimer

The USDA Forest Service makes no warranty, expressed or implied regarding the data displayed on this map, and reserves the right to correct, update, modify, or replace this information without notification. The USDA Forest Service makes no warranty to the accuracy of the approved pipeline route on non National Forest System lands. Any buffers shown on this map are for the purpose of depicting the area subject to the closure order and do not reflect the approved area of disturbance for the project.

0 0.1 0.2 0.4 Miles

Legend

- Milepost
- Tenth-mile
- Approved Pipeline Route
- Mystery Ridge Road excluded from Closure Order
- Closed Area
- Appalachian Trail
- Appalachian Trail Tread excluded from Closure Order
- Administrative Forest Boundary
- National Wilderness Area
- National Forest System Lands

Attachment 1: Mountain Valley Pipeline Closure Order



U.S. Forest Service
Southern Region
George Washington & Jefferson
National Forest



Copies of this map are available for public inspection in the Office of the Regional Forester, Southern Region, Atlanta, GA.

Map Created: June 28, 2023