



Arapaho and Roosevelt National Forests & Pawnee National Grassland | Sulphur Ranger District

Permits go on sale on Nov. 9, 2023. The Elk Creek cutting area will be open for cutting Saturday Dec. 2, 2023 through Sunday Dec. 10, 2023. Other areas on the district are open to cutting **Friday, Nov. 10, 2023 through Sunday, Jan. 7, 2024.** Please print your permit prior to your trip.

Federal Rules:

- * Stump height and diameter must be 6 inches or less from the ground.
- * Do not top trees, take whole tree
- * Handsaws are best (chainsaws prohibited)
- * Snowmobiles are prohibited in the Elk Creek cutting area
- * Do not cut on private lands.
- * Cutting is prohibited within the Fraser Experimental Forest, the Winter Park/Mary Jane ski areas, and designated wilderness or protected areas.



Prepare for your Trip:

- * Permits are \$20/each with a 5 max limit
- * Elk Creek is open from 8:30 am to 3:00 pm
- * Dogs must be on a leash in the designated cutting areas
- * Tire chains, 4-wheel drive or all-wheel drive are required upon entering the Elk Creek cutting area
- * Recommended equipment: Ice scraper, shovel, flashlight, blanket, water, jumper cables, flares, a rope to safely secure your tree for transport, and a radio for emergencies
- * Pack out all trash



Where to buy your permit:

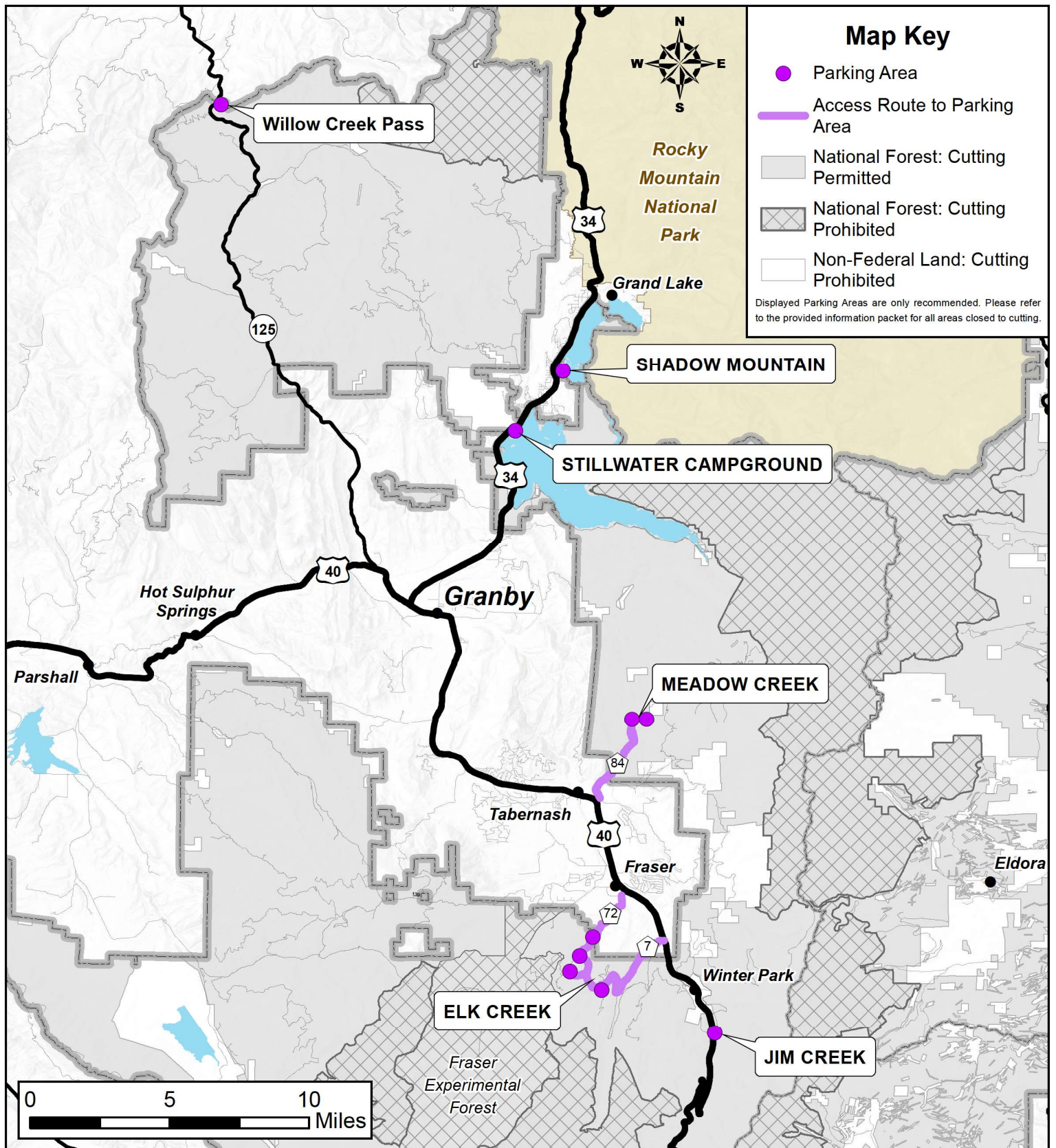
| | |
|---|--|
| Country Ace Hardware 627 W. Agate Granby, CO 80446 | Grand Lake Visitor's Center 14700 US Hwy 34 Grand Lake, CO 80447 |
| Murdoch's Ranch and Home Supply 541 Zerex St. Fraser, CO 80442 | Fireside Market and Eatery 78337 US Highway 40 Winter Park, CO 80482 |
| Winter Park Chamber of Commerce 78841 US Highway 40 Winter Park, CO 80482 | Online at: www.recreation.gov |

Cut trees with a stump diameter of 6 inches or less!



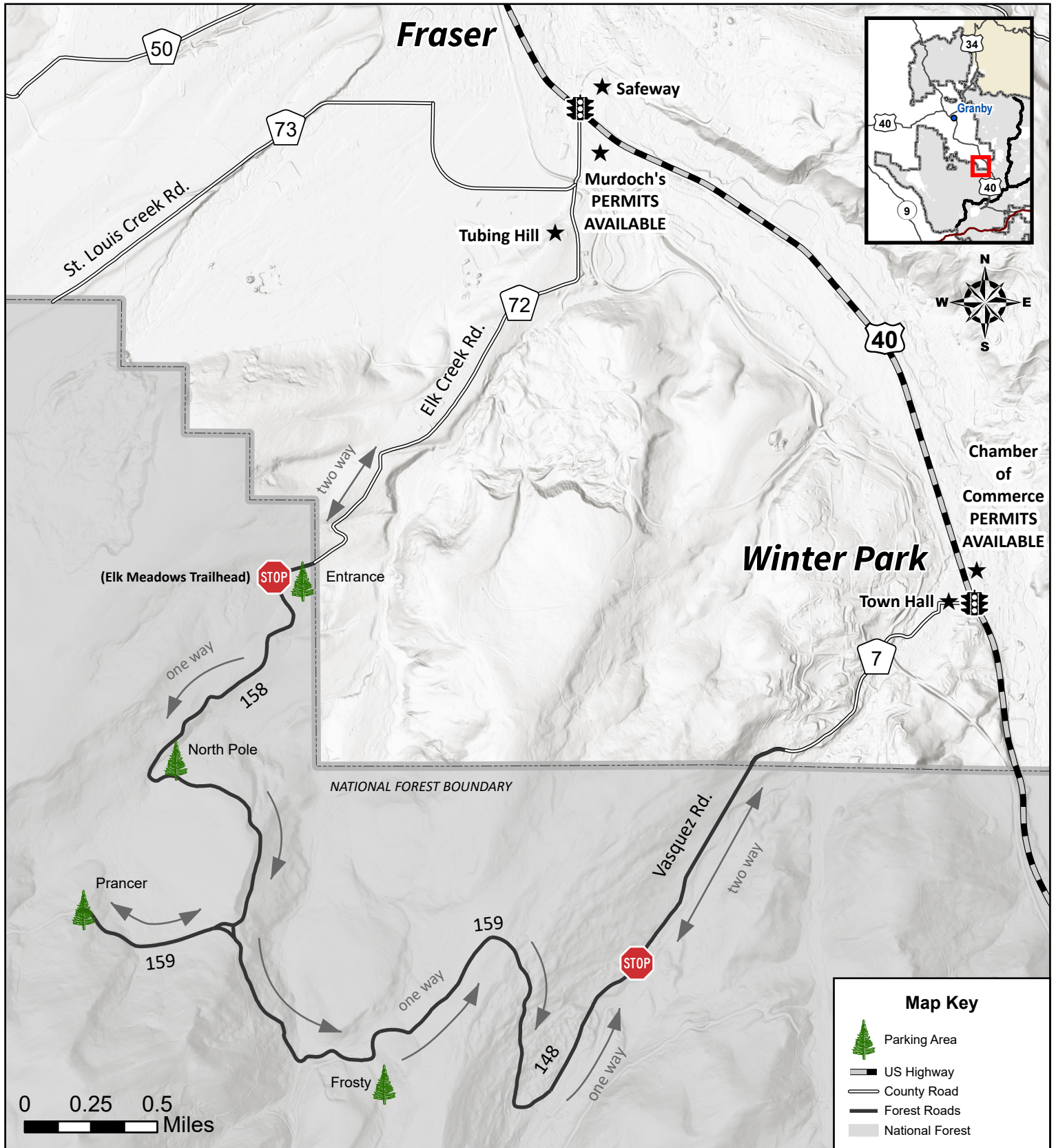


Christmas Tree Cutting - Forest Access Routes



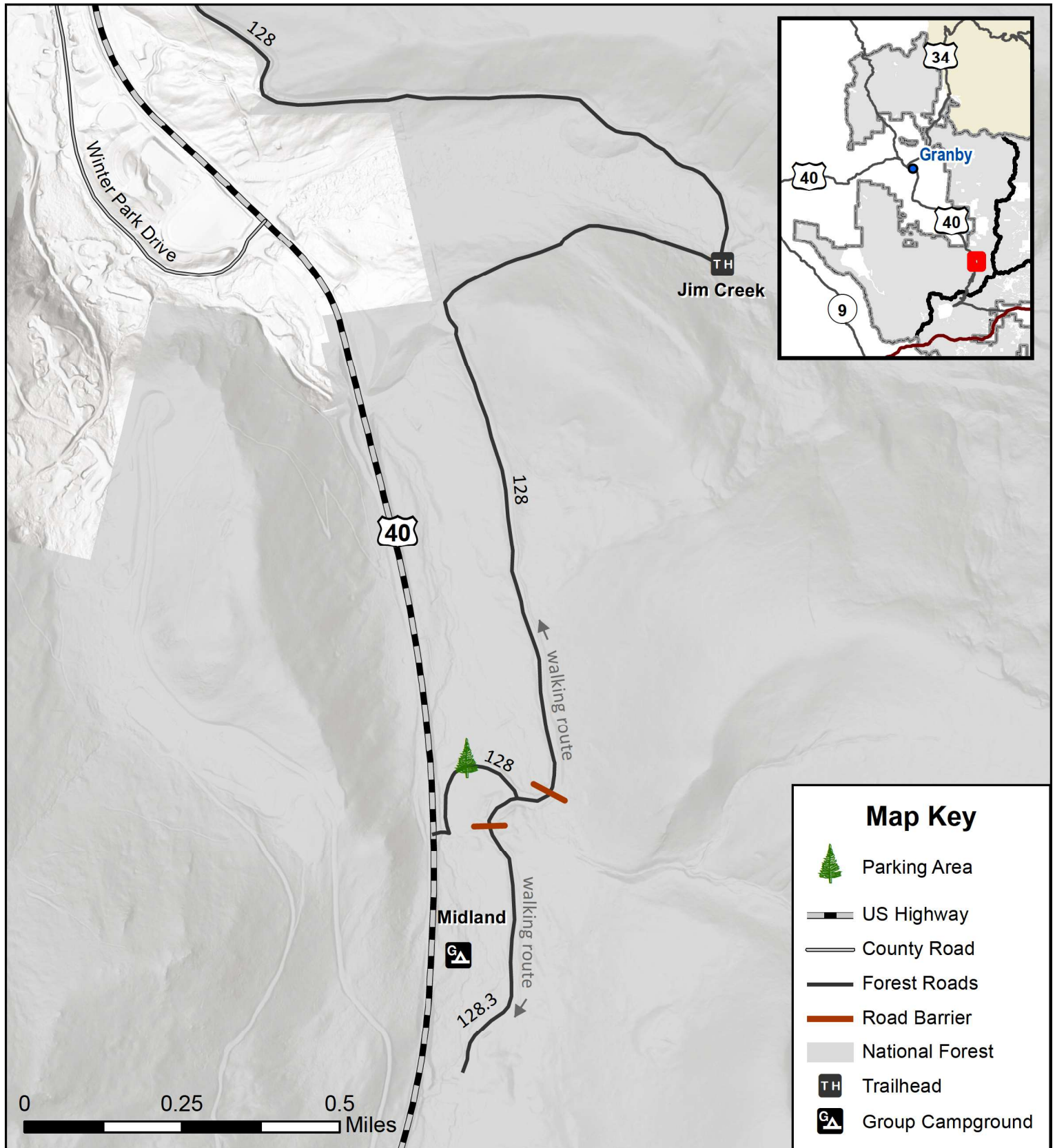


Elk Creek Christmas Tree Cutting



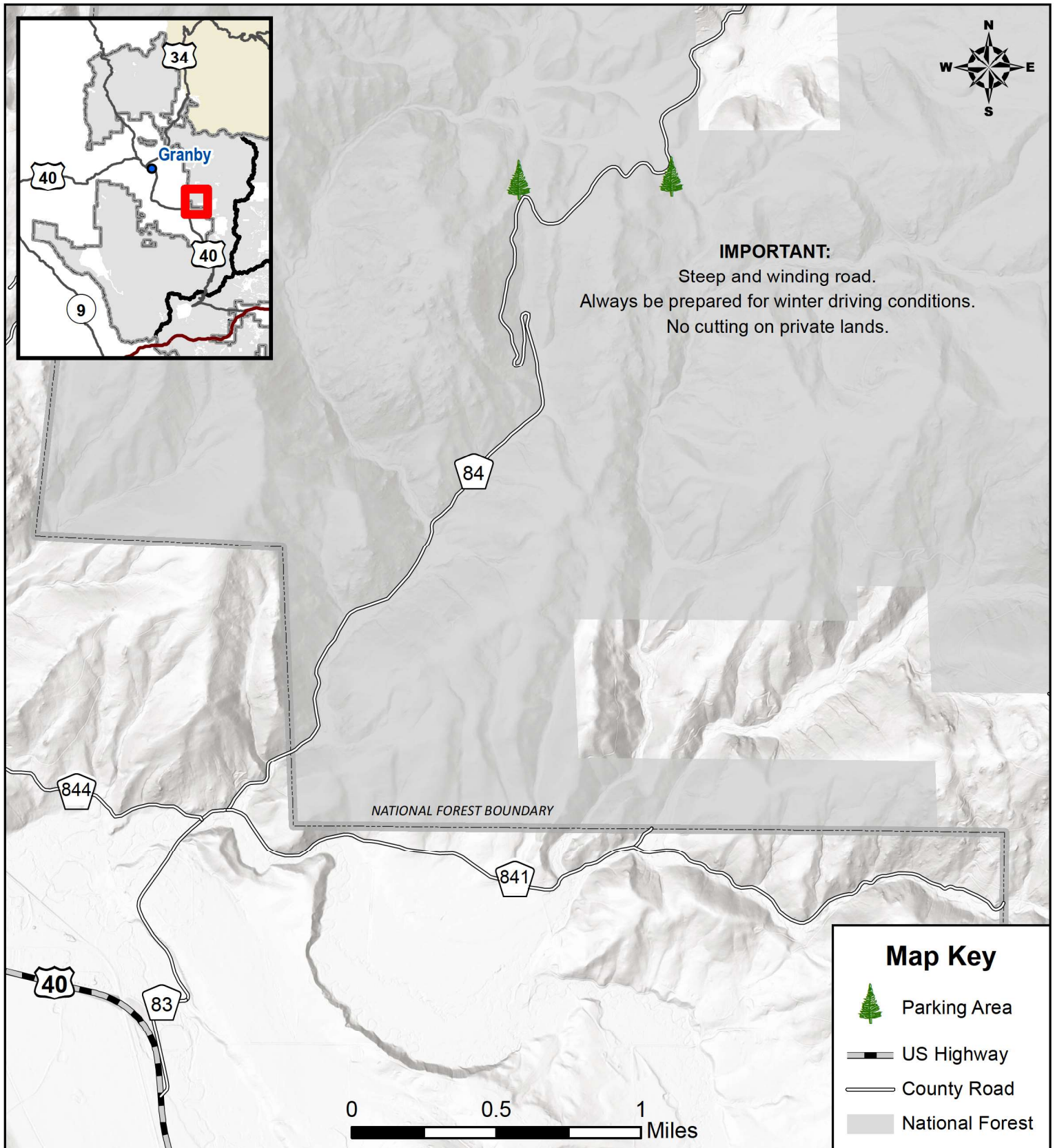


Jim Creek Christmas Tree Cutting



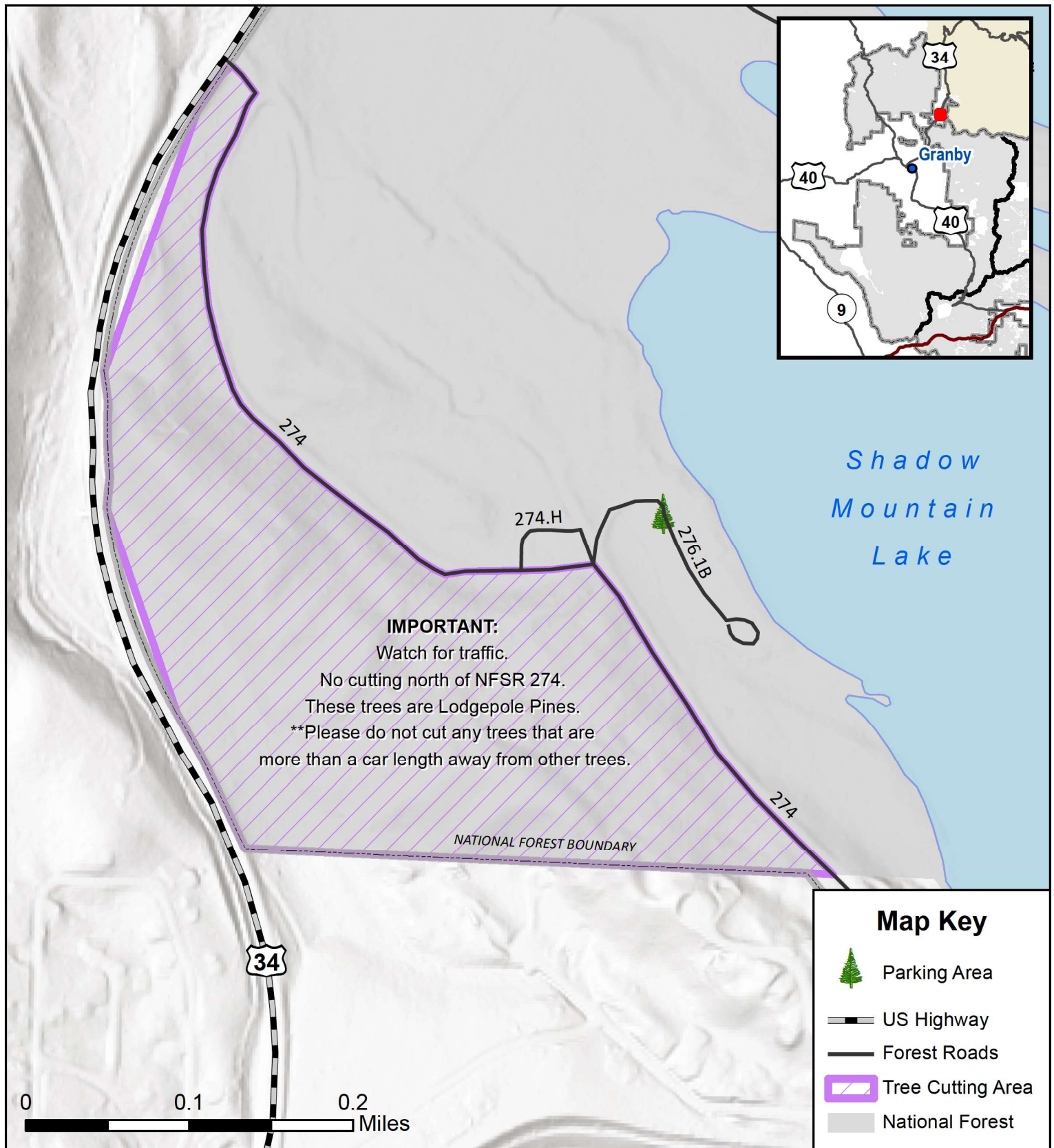


Meadow Creek Christmas Tree Cutting

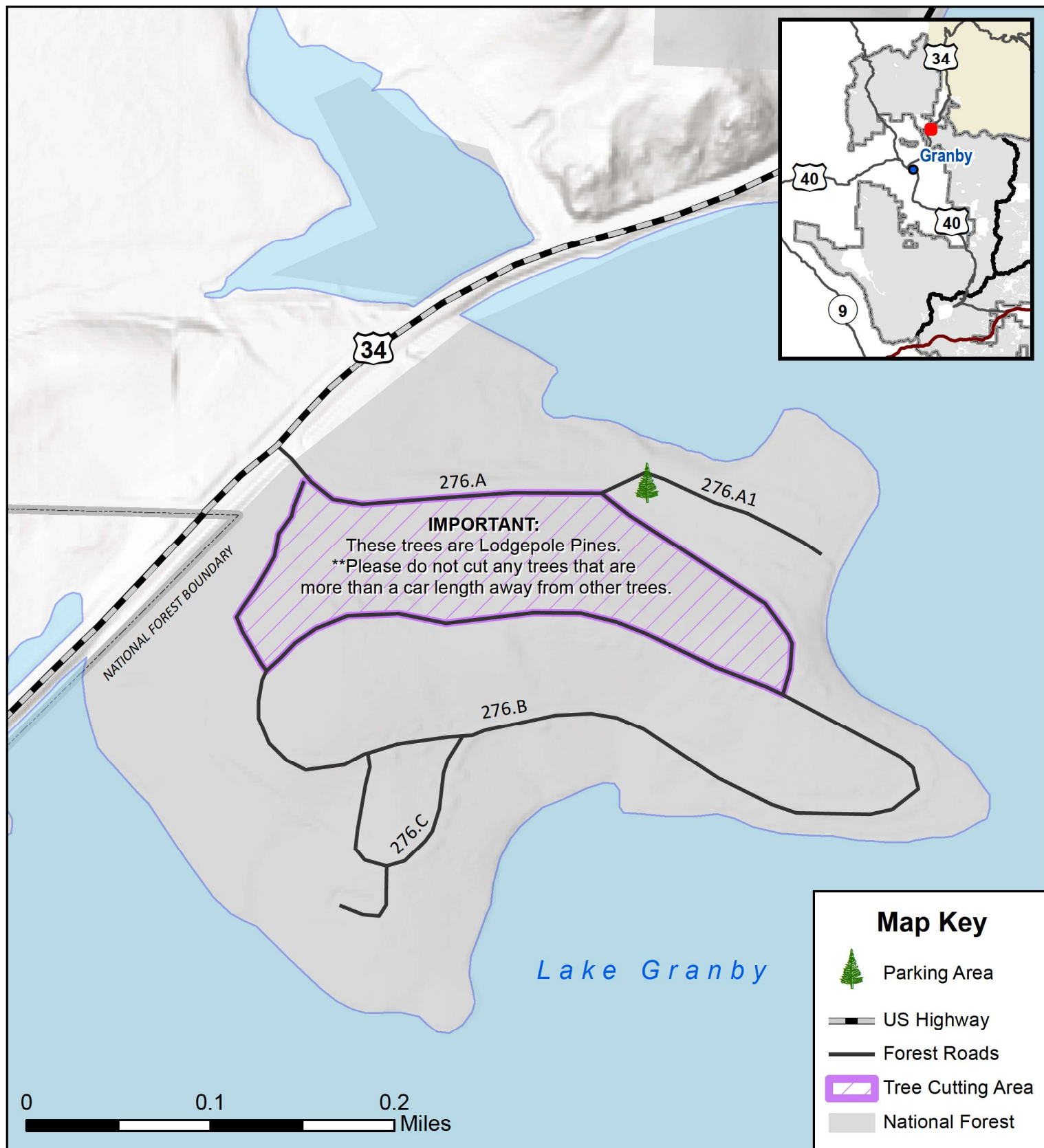




Shadow Mountain Christmas Tree Cutting



Stillwater Campground Christmas Tree Cutting



Disclaimer: This map is for display purposes only and not for navigation. The Forest Service reserves the right to correct, update, modify or replace GIS products without notification. The Forest Service uses the most current and complete data it has available. GIS data and product accuracy may vary. For more information, contact the Arapaho and Roosevelt National Forests and Pawnee National Grassland Supervisor's Office 2150 Centre Ave Ft Collins, CO 80526 970-295-6600

dmuise
10/21/2022



Willow Creek Pass Christmas Tree Cutting

