

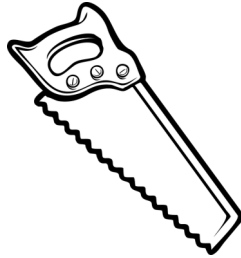


Arapaho and Roosevelt National Forests & Pawnee National Grassland | Canyon Lakes Ranger District

Permits go on sale on Recreation.gov Nov. 9, 2023. Tree cutting is permitted  
**Nov. 24, 2023 – Jan. 7, 2024.** Please print your permit prior to your trip.

### Federal Rules:

- \* Do not cut on private lands. Know your location and only cut on Forest Service Land.
- \* Stumps must be severed below 6 inches.
- \* Scatter any unused portion of your tree.
- \* Do not top trees, take whole tree.
- \* Do not drive off public roads.
- \* Make sure your permit is displayed on dashboard or a visible location.
- \* Pack out all trash.



### Prepare for your Trip:

- \* We recommend having traction devices and tow straps available, and 4- wheel drive/all wheel drive vehicles.
- \* Recommended equipment: Ice scraper, shovel, flashlight, blanket, water, jumper cables, flares, a rope to safely secure your tree for transport, and a radio for emergencies.
- \* Remember: cell phones may not work in the mountains.
- \* Download Avenza App with the **Canyon Lakes Ranger District Motor Vehicle Use Map** prior to your trip. See QR code and map on reverse side.



### Information Stations

Smokey and the Poudre Wilderness Volunteers will be operating  
Information Stations at these sites:

#### Arrowhead Lodge Visitor Center

(34 miles west of Ted's Place on CO-14)

#### Mount Margaret Trailhead

(20 miles west of The Forks on CR 74E)

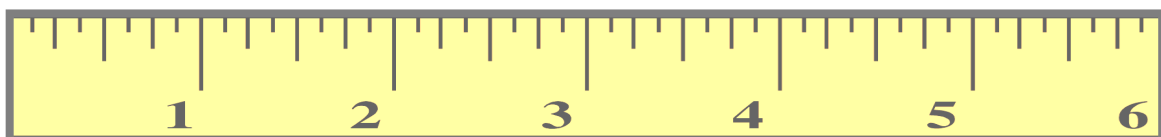
Stations will be open 10 a.m. - 2:00 p.m.

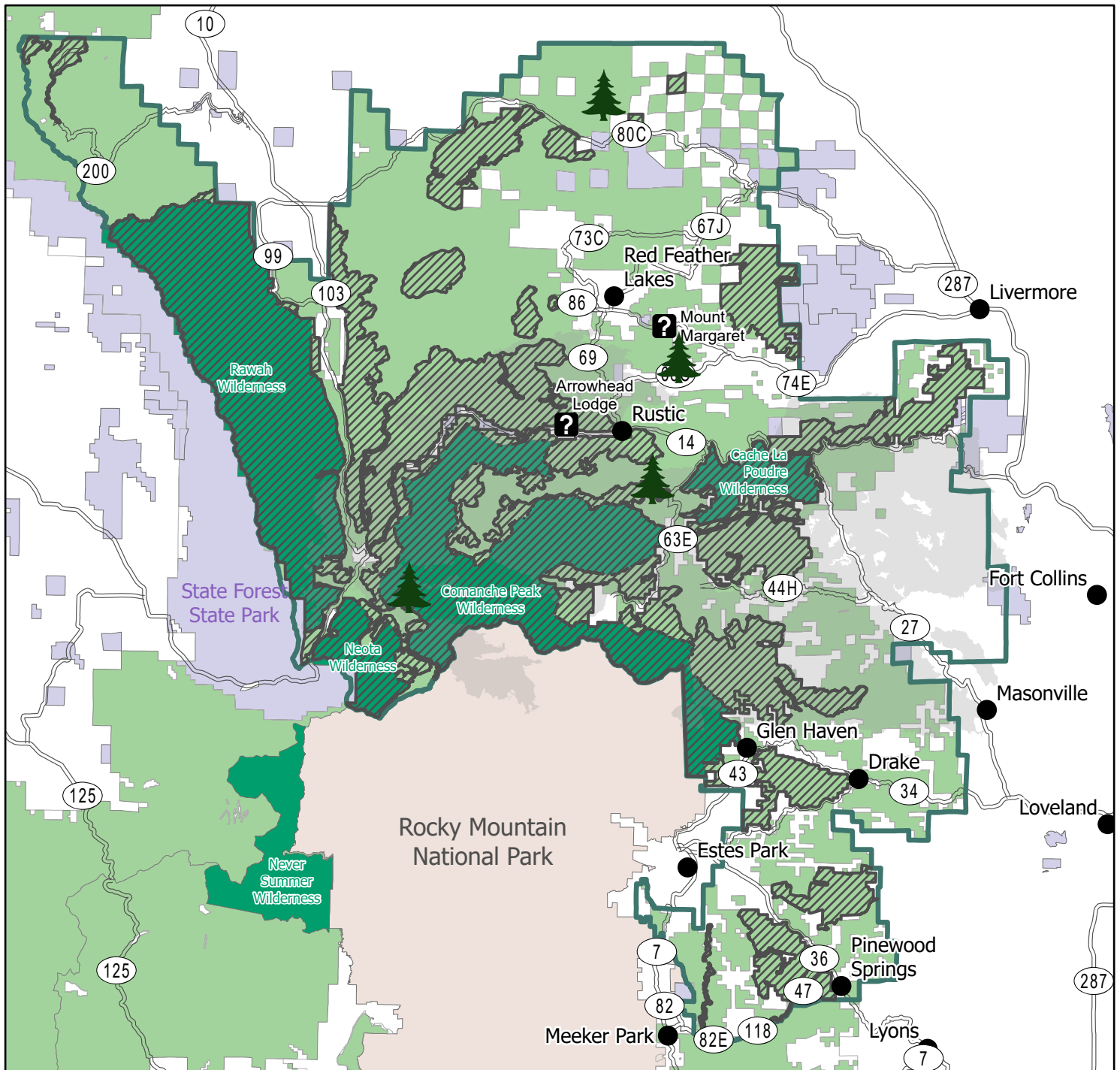
November 24-25

December 2-3

December 9-10

**Cut trees with a stump diameter of 6 inches or less!**





## Legend

- Canyon Lakes Ranger District Boundary
- Cutting Prohibited (USFS lands)
- Wilderness
- National Forest
- Non-Federal Land (Cutting Prohibited)
- Suggested Cutting Areas (see larger area maps)
- Recent Wildfire (Cameron Peak & High Park)
- National Forest Access Routes
- State of Colorado Lands (CPW)
- Visitor information on select days

Scan for MVUM  
North Map



Scan for MVUM  
South Map



Reference the Motor Vehicle Use Map (MVUM) to identify roads seasonally closed to motor vehicles. These may be accessed by snowshoe, ski, and snowmobile depending on regulations.

**Travel at your own risk. Chains/traction devices recommended.**  
Some roads may not be plowed or may not be suitable for passenger vehicles during the winter season. Majority of Forest Service roads are not plowed.

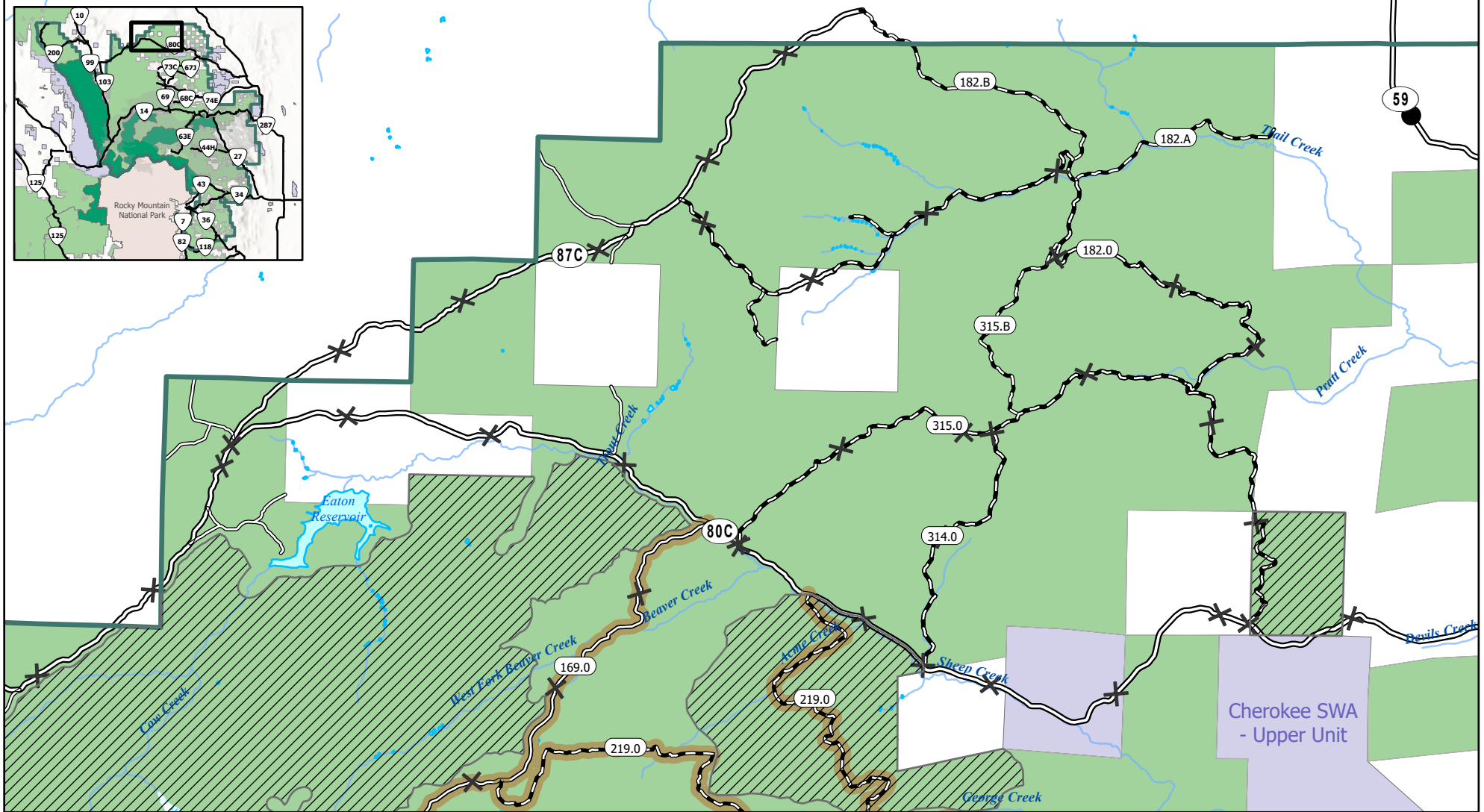
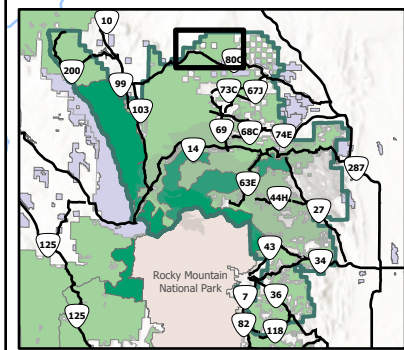
**National Forest lands are intermixed with private lands.**  
Only cut on public lands.  
Maps on the Avenza App can help identify your exact location.  
Some prohibited areas include fire burn scars.

**Follow all regulations listed on the cutting tree permit.**  
Cutting is prohibited in developed recreation sites.

**Park in areas so traffic can safely pass ; do not block gates.**



Arapaho and Roosevelt National Forests & Pawnee National Grassland | Canyon Lakes Ranger District



## Legend

- |                                            |                                                 |                                                        |                                    |
|--------------------------------------------|-------------------------------------------------|--------------------------------------------------------|------------------------------------|
| Cutting Prohibited (USFS lands)            | Wilderness                                      | FS Roads Open to All Vehicles, Seasonal                | Gravel/Dirt, Not plowed            |
| Recent Wildfire (Cameron Peak & High Park) | Colorado State Lands (CPW - Cutting Prohibited) | FS Roads Open to Highway Legal Vehicles Only, Yearlong | Gravel, Plowed                     |
| National Forest                            | Other Public Roads                              | FS Roads Open to Highway Legal Vehicles Only, Seasonal | Visitor information on select days |
| Non-Federal Land (Cutting Prohibited)      | FS Roads Open to All Vehicles, Yearlong         |                                                        |                                    |

Reference the Motor Vehicle Use Map (MVUM) to identify roads seasonally closed to motor vehicles. These may be accessed by snowshoe, ski, and snowmobile depending on regulations.

**Travel at your own risk. Chains/traction devices recommended.**  
Some roads may not be plowed or may not be suitable for passenger vehicles during the winter season. Majority of Forest Service roads are not plowed.

**National Forest lands are intermixed with private lands.** Only cut on public lands.  
Maps on the Avenza App can help identify your exact location.  
Some prohibited areas include fire burn scars.

**Follow all regulations listed on the cutting tree permit.** Cutting is prohibited in developed recreation sites.

**Park in areas so traffic can safely pass ; do not block gates.**



0 0.25 0.5 1  
Miles

Scan for MVUM  
North Map

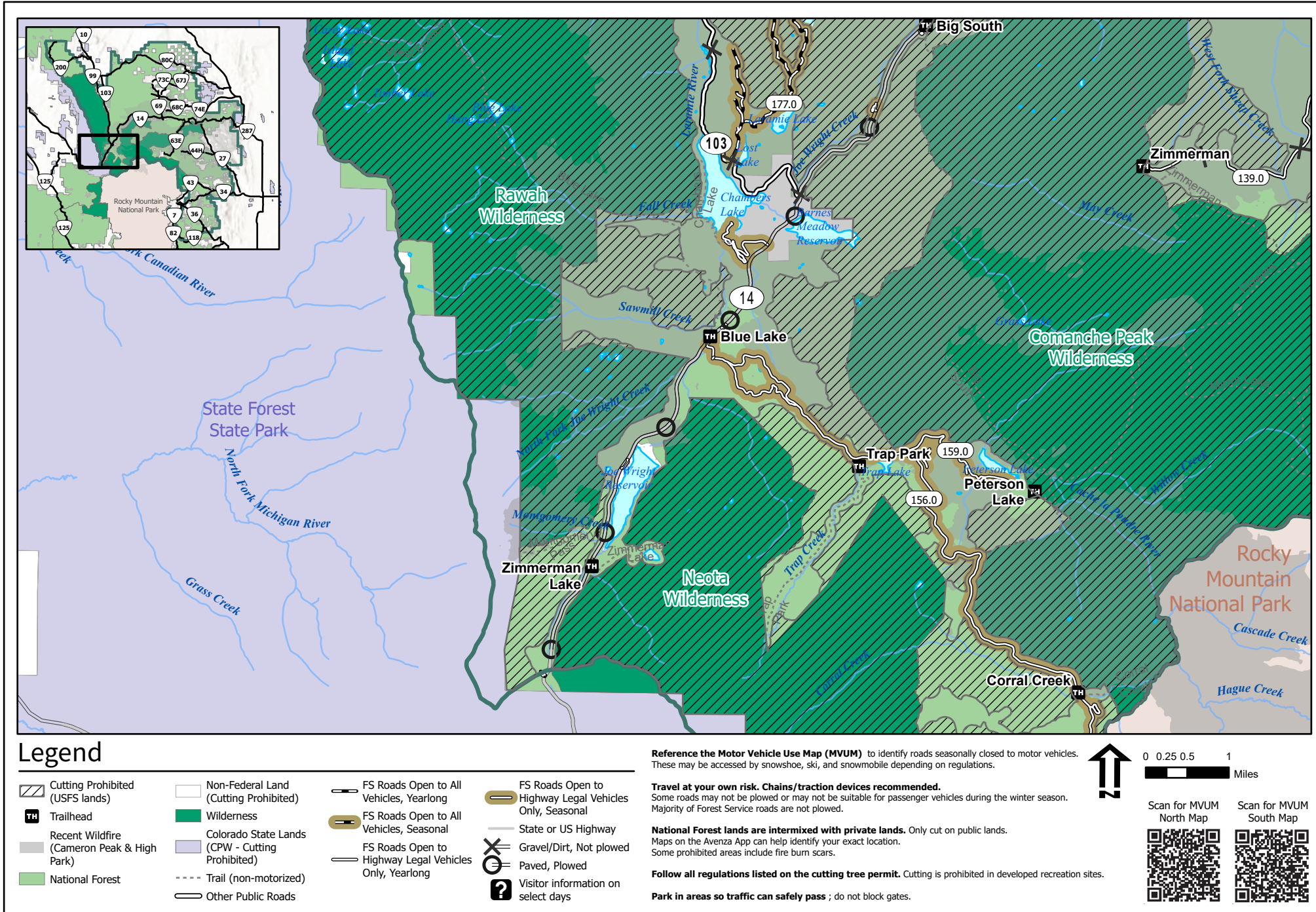


Scan for MVUM  
South Map





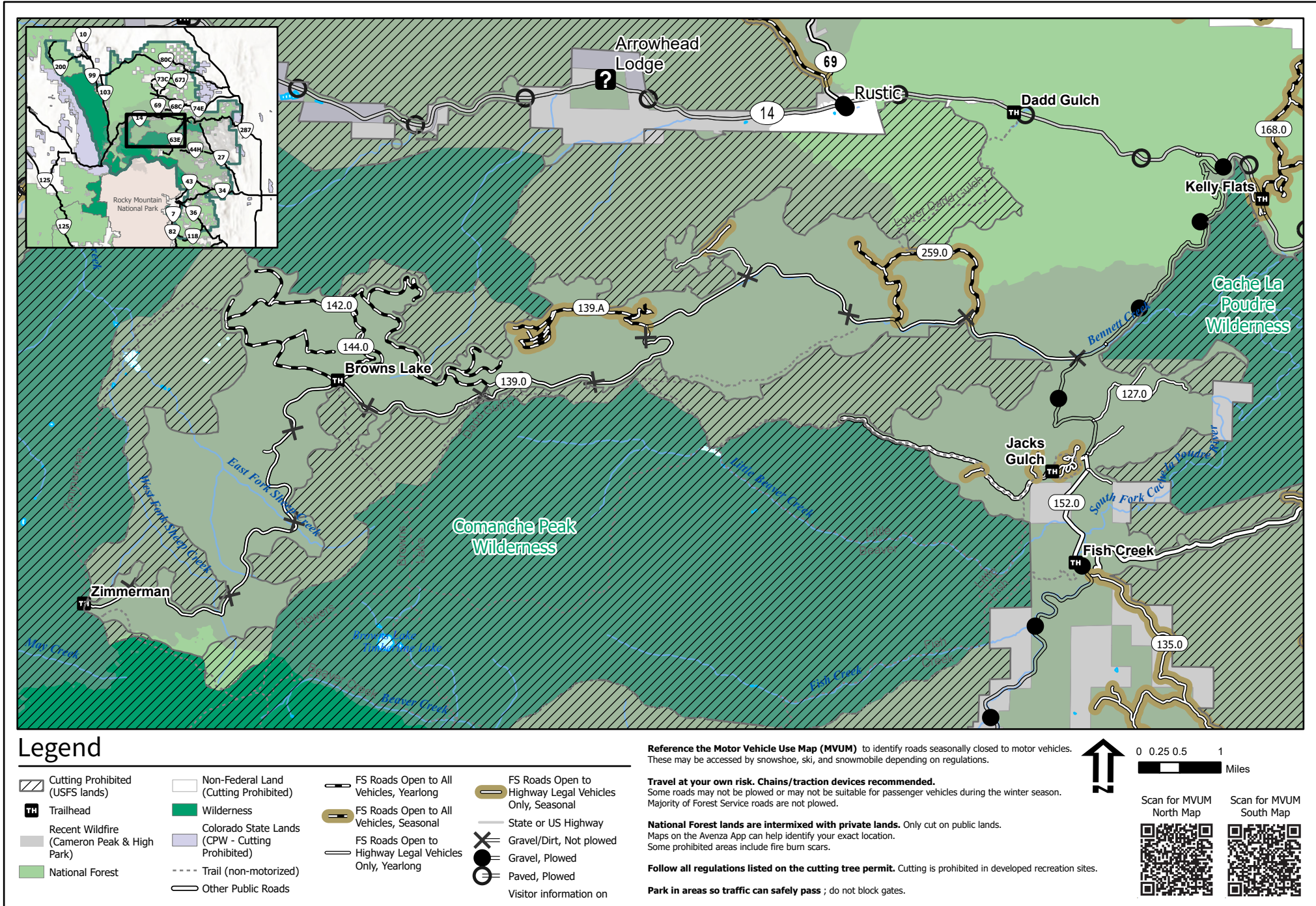
Arapaho and Roosevelt National Forests & Pawnee National Grassland | Canyon Lakes Ranger District





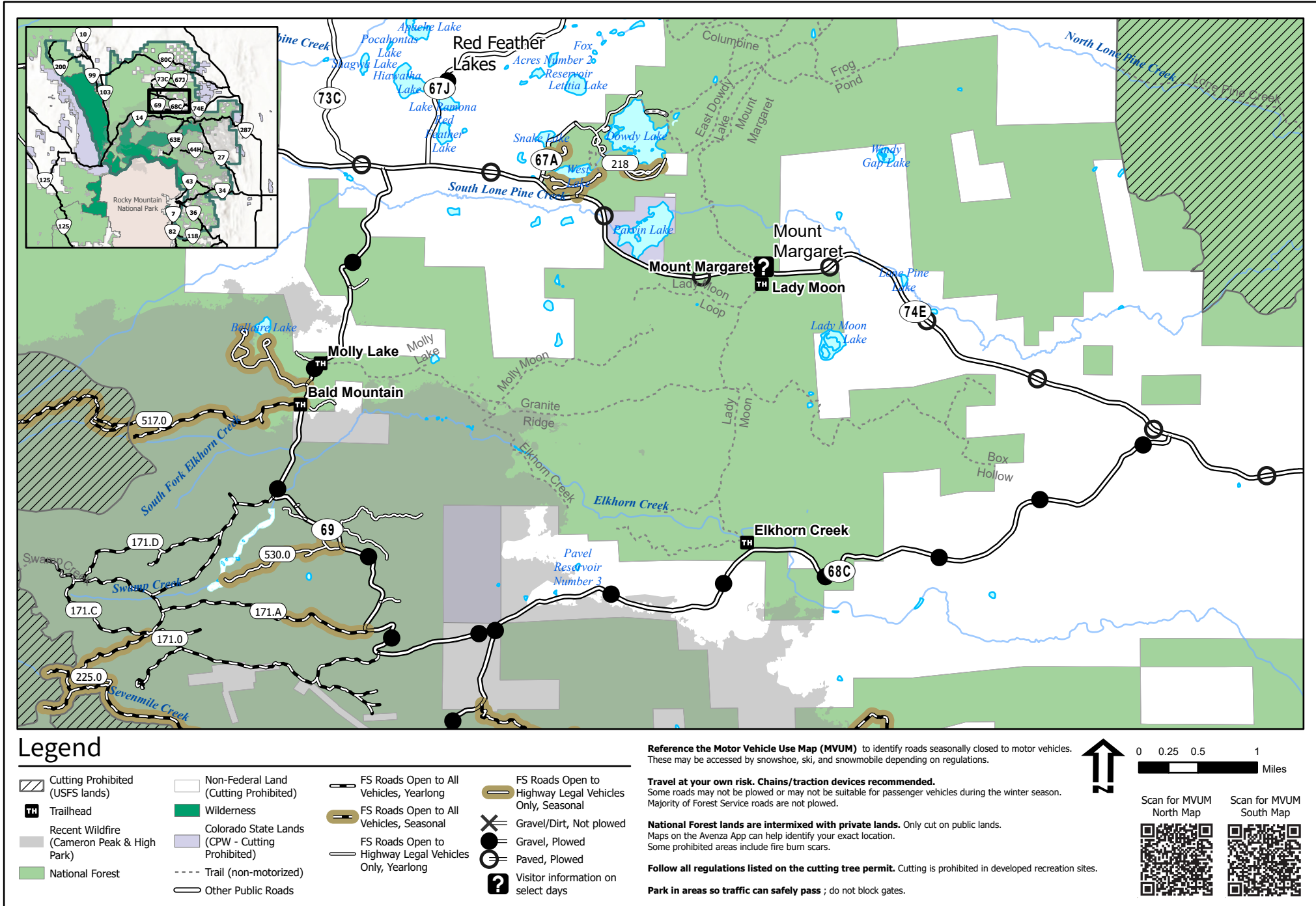


Arapaho and Roosevelt National Forests & Pawnee National Grassland | Canyon Lakes Ranger District



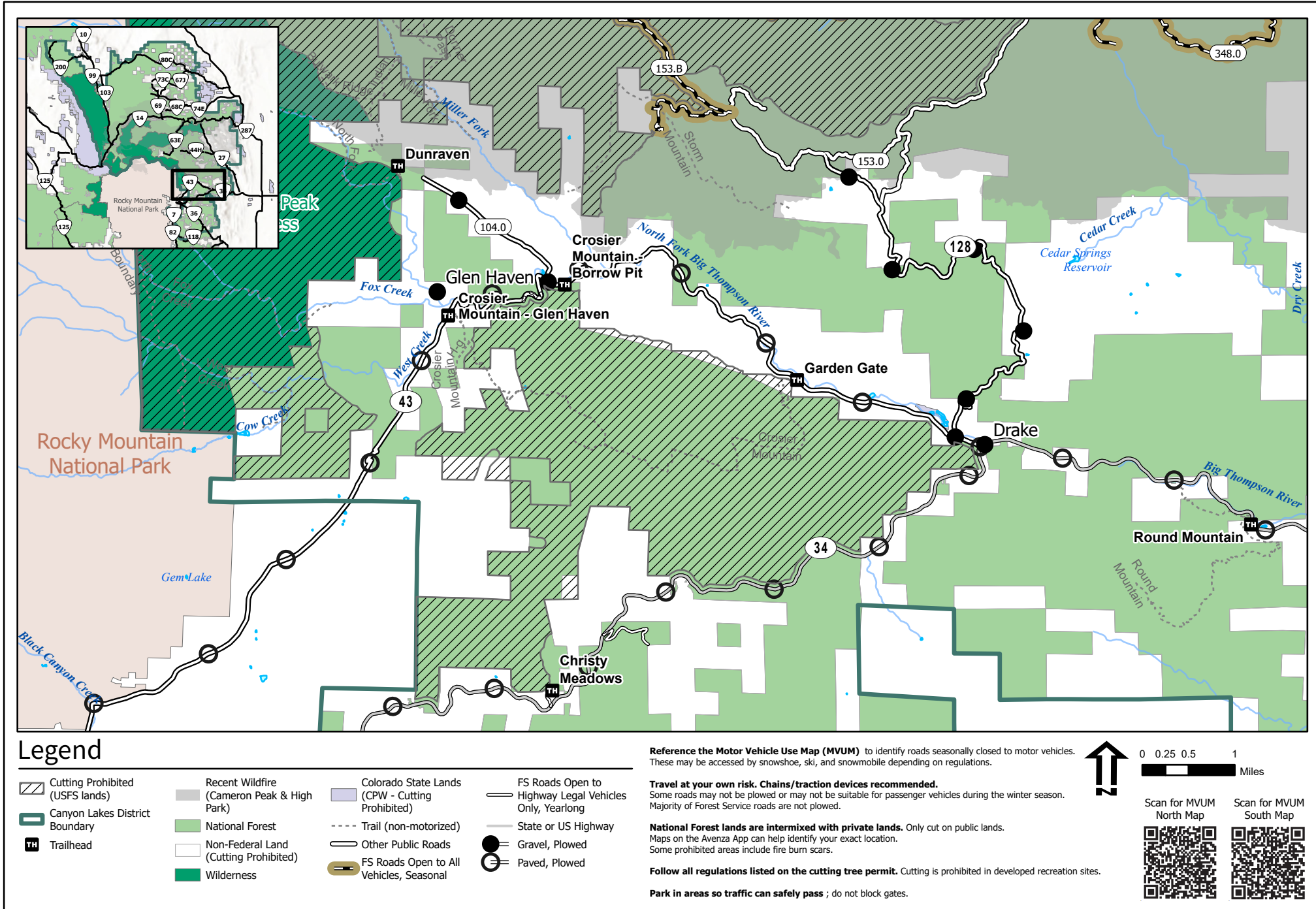


Arapaho and Roosevelt National Forests & Pawnee National Grassland | Canyon Lakes Ranger District





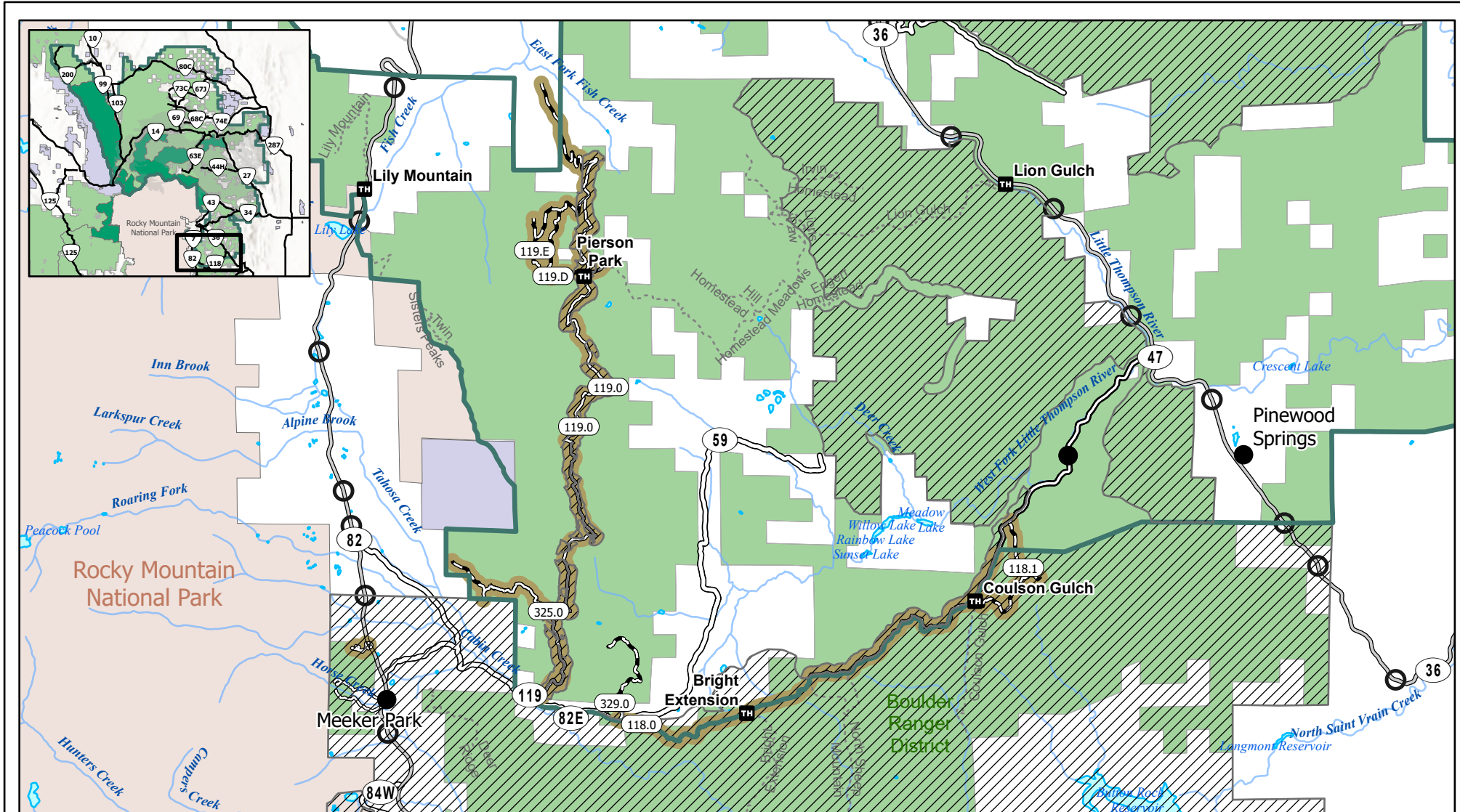
Arapaho and Roosevelt National Forests & Pawnee National Grassland | Canyon Lakes Ranger District







Arapaho and Roosevelt National Forests & Pawnee National Grassland | Canyon Lakes Ranger District



## Legend

- |                                       |                                                 |                                                        |                                                |
|---------------------------------------|-------------------------------------------------|--------------------------------------------------------|------------------------------------------------|
| Cutting Prohibited (USFS lands)       | Colorado State Lands (CPW - Cutting Prohibited) | FS Roads Open to All Vehicles, Seasonal                | State or US Highway                            |
| Canyon Lakes District Boundary        | Trail (non-motorized)                           | FS Roads Open to Highway Legal Vehicles Only, Yearlong | Gravel, Plowed                                 |
| Trailhead                             | Other Public Roads                              | FS Roads Open to Highway Legal Vehicles Only, Seasonal | Paved, Plowed                                  |
| National Forest                       | FS Roads Open to All Vehicles, Yearlong         |                                                        | Boundary Admin Ranger District Generalized EDW |
| Non-Federal Land (Cutting Prohibited) |                                                 |                                                        |                                                |

Reference the Motor Vehicle Use Map (MVUM) to identify roads seasonally closed to motor vehicles. These may be accessed by snowshoe, ski, and snowmobile depending on regulations.

**Travel at your own risk. Chains/traction devices recommended.**  
Some roads may not be plowed or may not be suitable for passenger vehicles during the winter season. Majority of Forest Service roads are not plowed.

**National Forest lands are intermixed with private lands.** Only cut on public lands. Maps on the Avenza App can help identify your exact location. Some prohibited areas include fire burn scars.

**Follow all regulations listed on the cutting tree permit.** Cutting is prohibited in developed recreation sites.

**Park in areas so traffic can safely pass ; do not block gates.**



0 0.25 0.5 1  
Miles

Scan for MVUM  
North Map



Scan for MVUM  
South Map

