

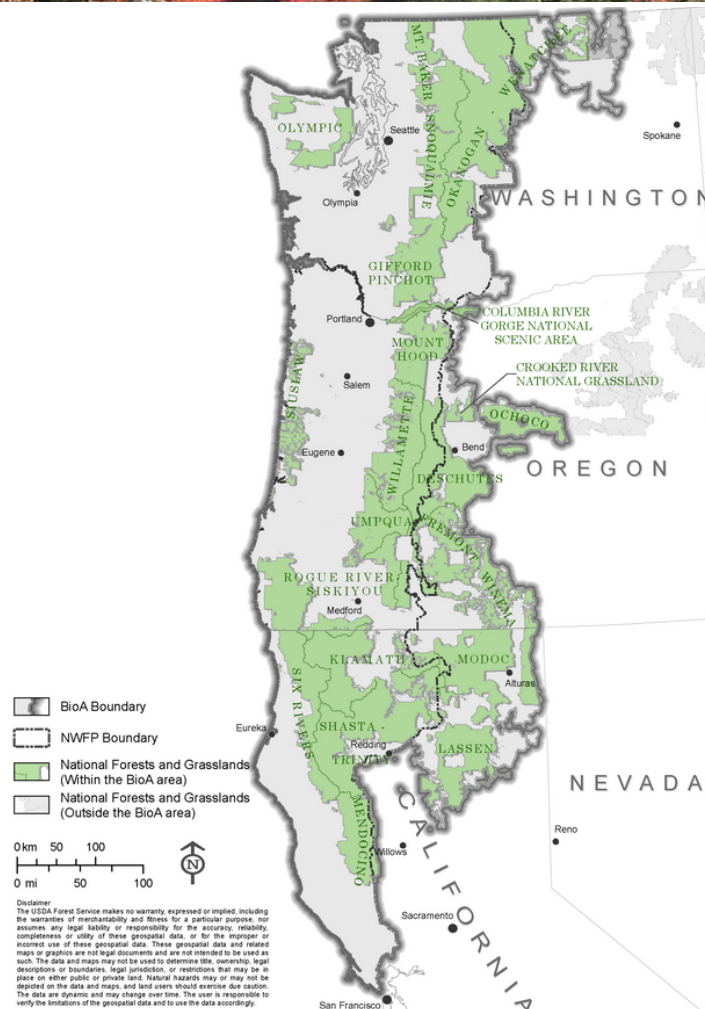
Northwest Forest Plan Amendment

About the Northwest Forest Plan (NWFP)

- Set the overall management direction and guidance for 17 National Forests across 24 million acres of federally managed lands in Washington, Oregon and northwestern California.
- Established in 1994 to protect threatened and endangered species while contributing to regional social and economic sustainability.
- Set forth a vision for land management, describes the desired conditions within the NWFP area and lays out specific objectives, standards and guidelines for how to achieve those desired conditions.

What is Driving the Need for Change?

The NWFP was established nearly 30 years ago. Since then, there have been significant changes in local economic, social, environmental, and cultural conditions across the NWFP landscape, including changes in forest densities, climate change impacts, increased risks to forests and communities from wildfires, and changes in public uses of the area. Amending the NWFP will provide an updated framework to guide management that considers current science and local economic, social, and environmental conditions.



Process and Engagement Steps in Developing and Implementing an Amendment

Identify Need to Change

- FAC Input
- Tribal Involvement
- Public Workshops

Develop Proposed Amendment

- Consider Previously Received Public Comment

Consider Environmental Effects

- FAC Input

Publish Draft Amendment

- Provide Public Comments on Draft

Publish Final Plan*

- Objection Opportunity

Approve and Implement

- Public Review of Biennial Monitoring Evaluation

Coordination and Consultation with Tribes



Amendment Process and Engagement

The USDA Forest Service Pacific Planning Service Group, the Pacific Southwest Regional Office (Region 5) and the Pacific Northwest Regional Office (Region 6) are working collaboratively through the process to amend the NWFP. The 2012 Planning Rule requires the agency to incorporate opportunities for public involvement early and through every step of the planning process.

Aligned with this direction, the NWFP process will include close work with the NWFP Federal Advisory Committee (FAC), consultation with American Indian Tribes and regulatory agencies, and various participation opportunities from other government entities, the public, and interested parties. Where feasible, the Forest Service will seek to use existing data from prior assessments, feedback and monitoring of the NWFP's implementation.



We welcome your participation and input!

To find out more about this effort and sign up for future updates visit

<https://tinyurl.com/bdecza2d>



Why become engaged?

While the Forest Service cannot delegate its ultimate decision-making authority, a goal of public involvement is to identify opportunities to contribute to mutual objectives, resolve or reduce conflicts, and achieve mutually agreeable outcomes on the land and in our communities. There are many opportunities to engage in the NWFP amendment process.

Public Engagement: Public involvement has already been a key part of efforts to implement and update the Northwest Forest Plan and opportunities will continue to be available. While seeking to increase public involvement, the 2012 Planning Rule also emphasizes meaningful engagement with populations historically absent from the planning process including youth and under served communities.

Tribal Consultation: Tribes have a unique and important role in this process as sovereign governments that have stewarded these lands since time immemorial. The 2012 Planning Rule and Executive Order 13175 Consultation and Coordination with Tribal Governments provide direction for increased meaningful Tribal inclusion and co-stewardship in cooperative land management and for consultation on a government to government basis.

Federal, State, Local, County Government Engagement: The 2012 Planning Rule seeks to engage federal, state, local, and county governments in land management planning to consider community impacts and how the land management plans can most effectively integrate across landscapes and jurisdictional boundaries.

Federal Advisory Committee: The NWFP Federal Advisory Committee (FAC) was established by the Secretary of Agriculture in 2023 to provide advice and recommendations to the Forest Service regarding potential regional-scale land management planning approaches. The FAC will also weigh in on issues such as climate change, integration of Tribal values and Tribal ecological knowledge, managing landscapes that are more resilient to wildfire, protecting old growth and supporting communities. The FAC provides another way for communities, experts, Tribes, and interested parties to have representation and provide input for the NWFP amendment efforts. More info on the FAC can be found here at <https://tinyurl.com/2yj6ubsc>