

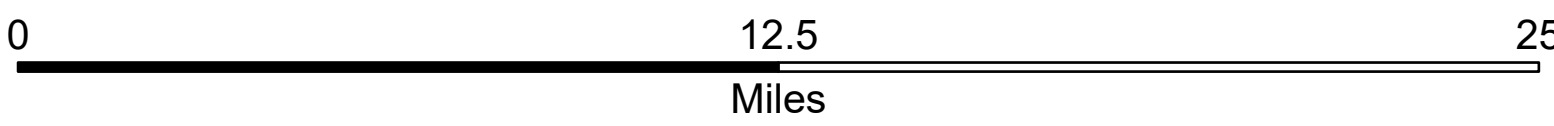
# San Juan National Forest

## FY24 Acquisitions and Conveyances

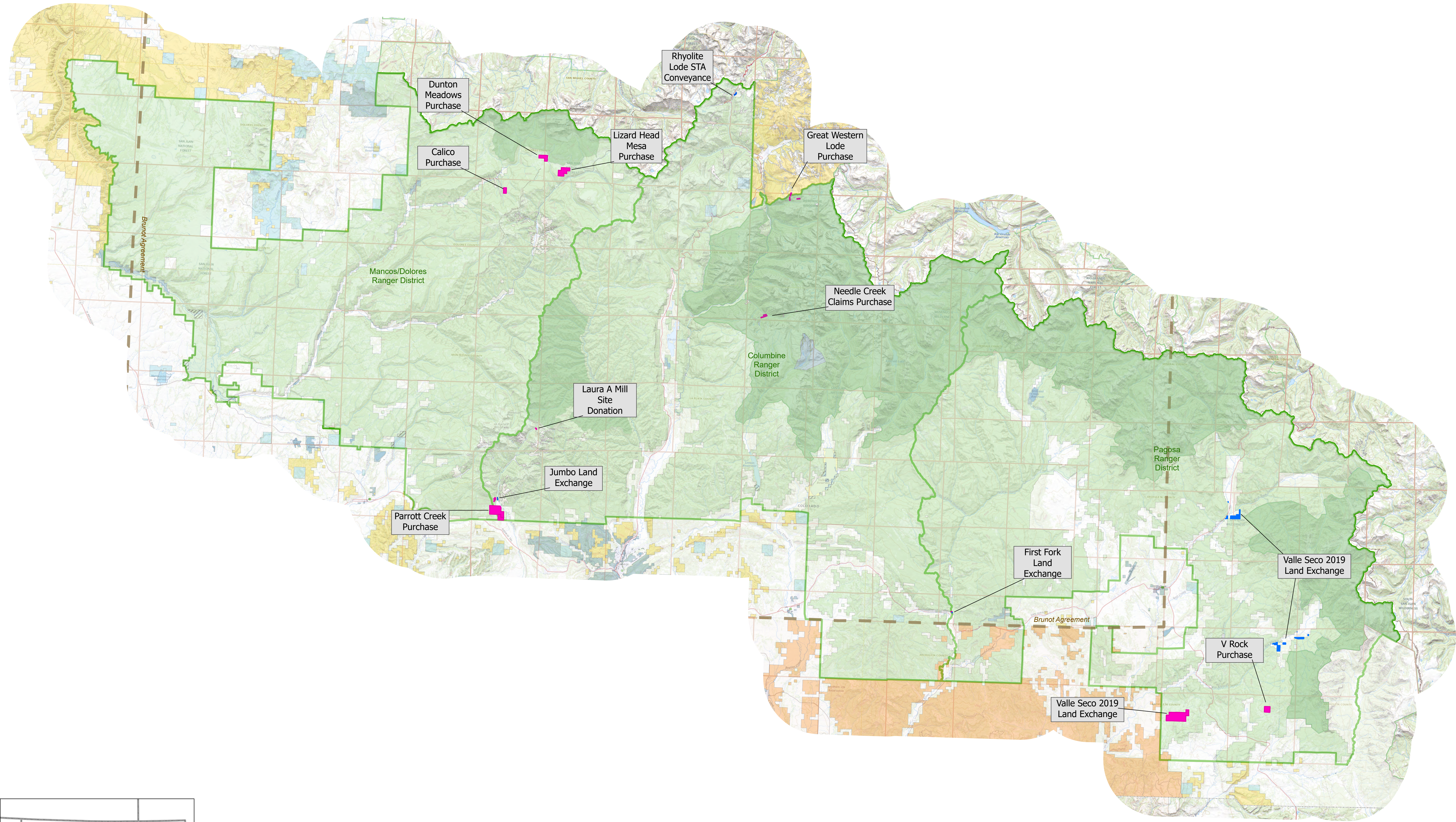
### Map 1 - Overview

- Brunot Agreement Boundary
- Proposed Acquisition
- Proposed Conveyance

USDA Forest Service  
San Juan National Forest

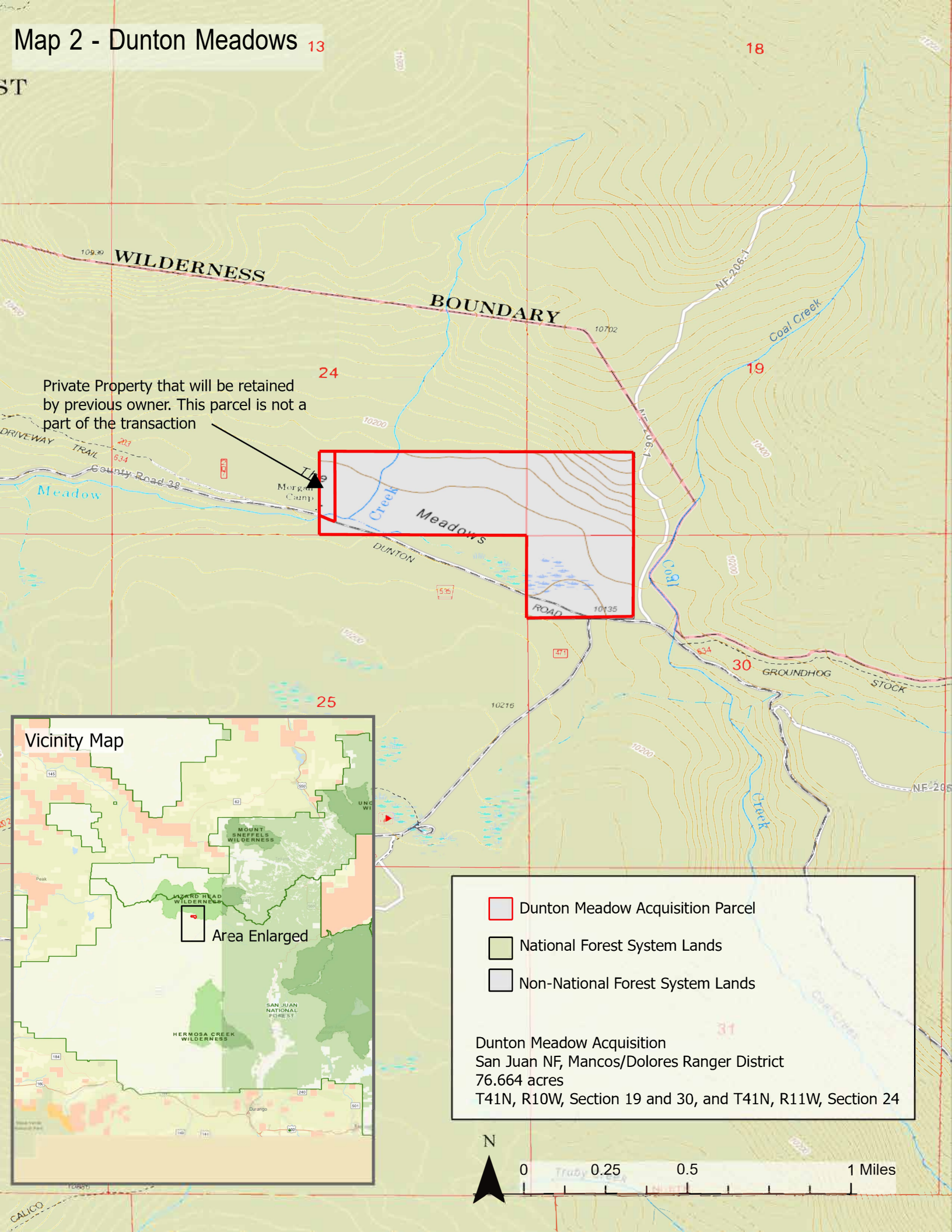


The USFS attempts to use the most current and complete geospatial data available. Geospatial data accuracy varies by theme on the map. Using this map for other than its intended purpose may yield inaccurate or misleading results. The USFS reserves the right to correct, update or modify geospatial inputs without notification.





# Map 2 - Dunton Meadows 13



Private Property that will be retained by previous owner. This parcel is not a part of the transaction

## Vicinity Map

Area Enlarged

- Dunton Meadow Acquisition Parcel
- National Forest System Lands
- Non-National Forest System Lands

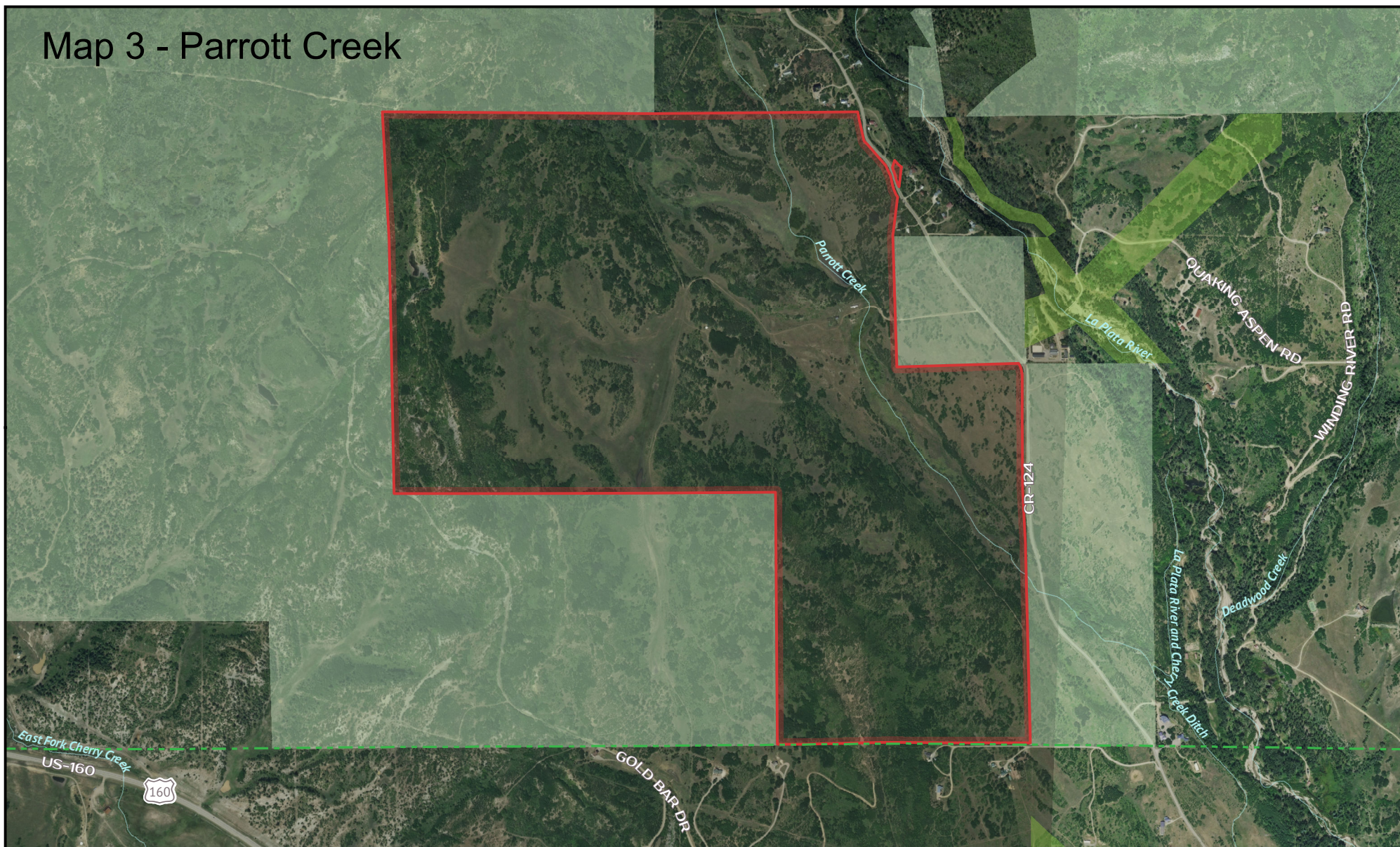
Dunton Meadow Acquisition  
San Juan NF, Mancos/Dolores Ranger District  
76.664 acres  
T41N, R10W, Section 19 and 30, and T41N, R11W, Section 24

N

0 0.25 0.5 1 Miles



# Map 3 - Parrott Creek



## References

Land Ownership/Management Sources:  
CNHP, COMaP, CSU, PADUS, NCED,  
NPS, and National Atlas.

## Disclaimer

The USDA Forest Service makes no warranty,  
expressed or implied regarding the data displayed on  
this map, and reserves the right to correct, update,  
modify or replace this information without notice.



**TRUST FOR  
PUBLIC  
LAND™**

- Proposed acquisition (~673 acres)
- US Forest Service administrative boundary
- National Forest System
- Private Conservation

Map 2 of 4

## Parrott Creek

Aerial map

The Land Purchase is located in sections 28, 29, 32, and 33,  
Township 36 North, Range 11 West, New Mexico  
Principal Meridian, La Plata County, Colorado.  
The acquisition tracts cover approximately 673 acres.

U.S Forest Service Rocky Mountain Region (R2)  
San Juan National Forest  
U.S. Congressional District 3





Map prepared by Trust For Public Land  
Map creation date: September 7, 2023.



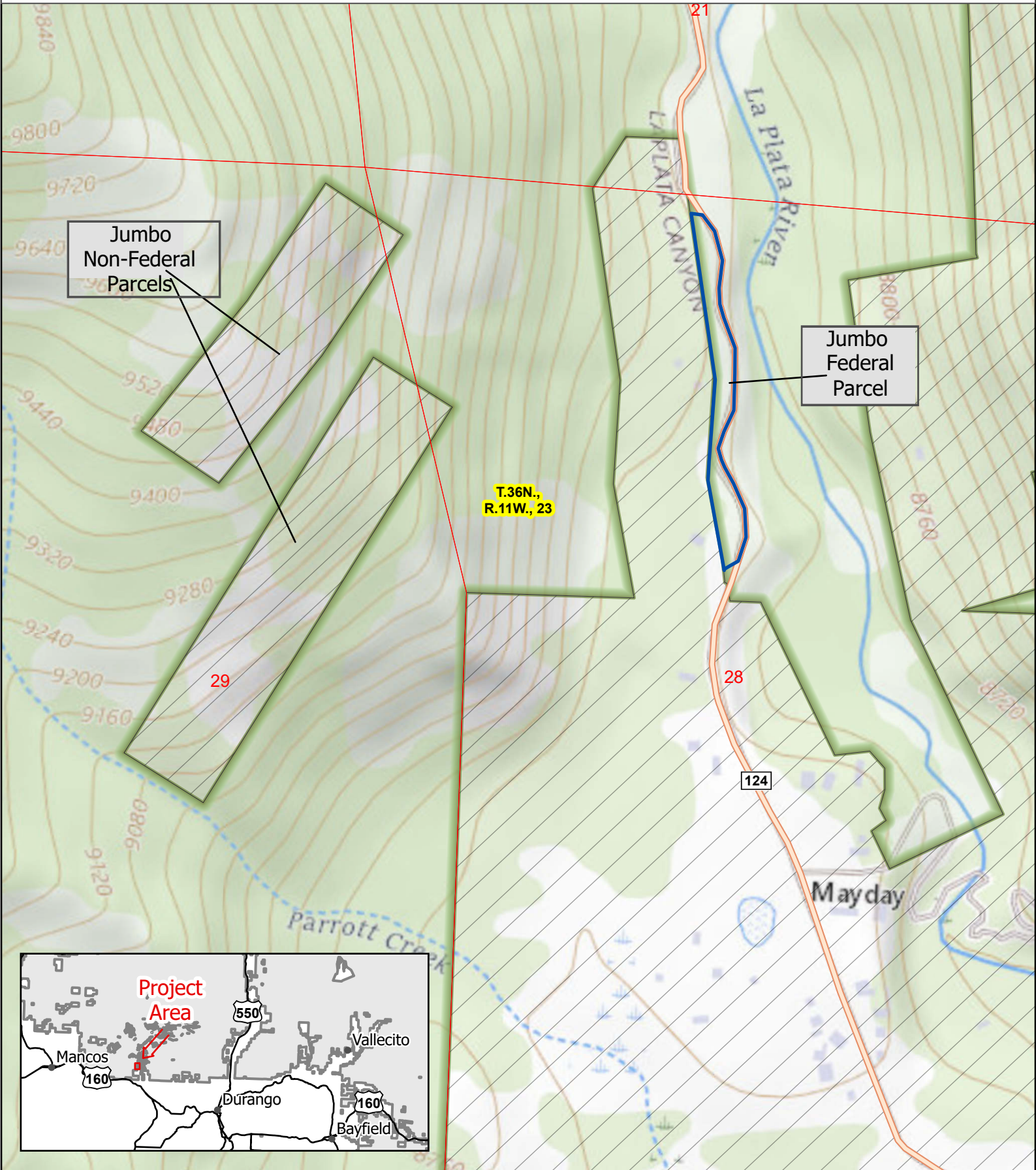


### Map 4 *Jumbo Land Exchange*



-  National Forest
-  Private Land
-  Roads Open to All Vehicles, Yearlong
-  Other Public Roads

The USFS attempts to use the most current and complete geospatial data available. Geospatial data accuracy varies by theme on the map. Using this map for other than its intended purpose may yield inaccurate or misleading results. The USFS reserves the right to correct, update or modify geospatial inputs without notification.

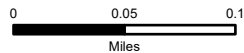








## Columbine Ranger District

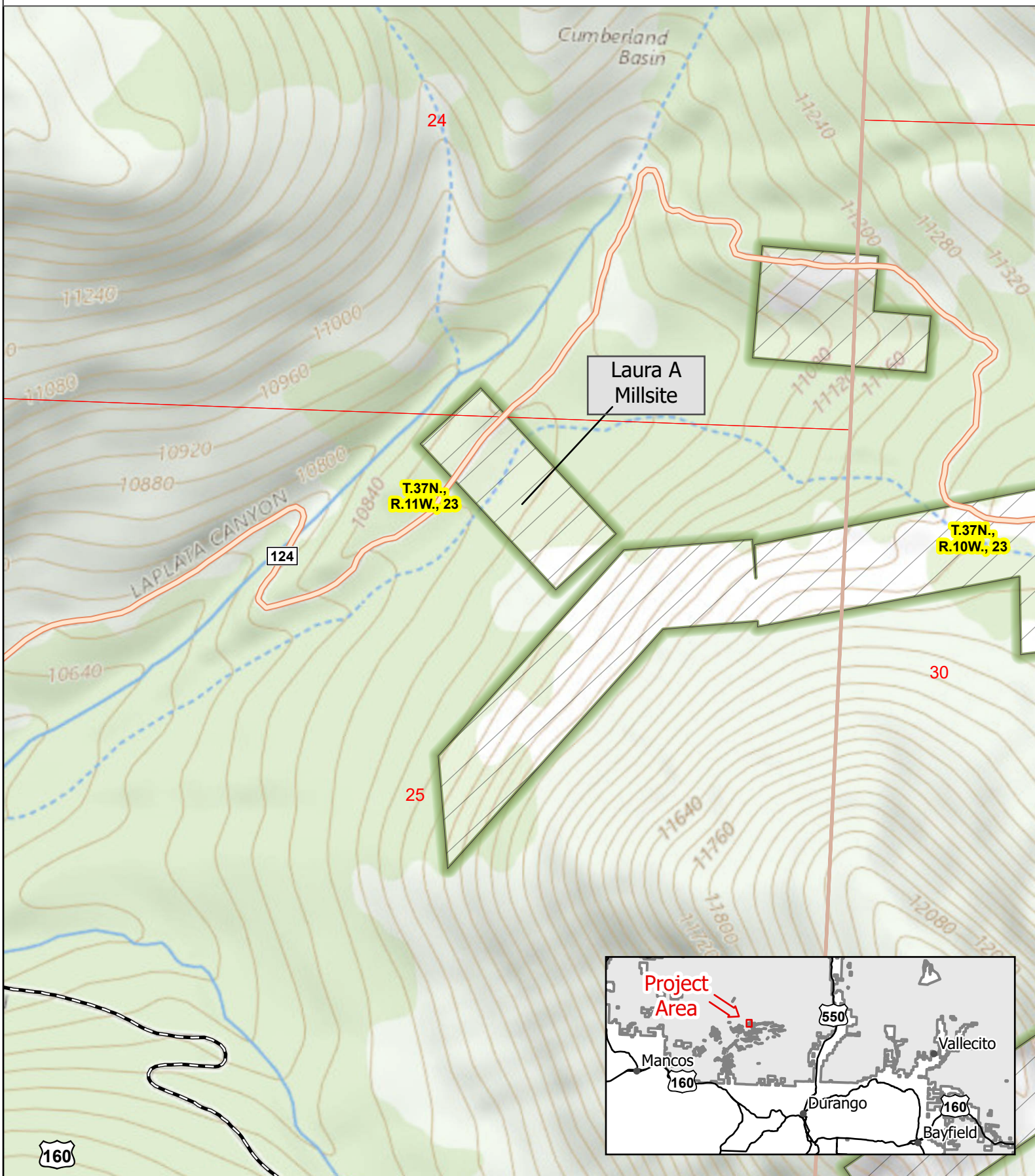
Map 5     *Laura A  
Millsite*

USDA Forest Service  
San Juan National Forest  
Columbine Ranger District



-  National Forest
-  Private Land
-  Roads Open to All Vehicles, Yearlong
-  Other Public Roads

The USFS attempts to use the most current and complete geospatial data available. Geospatial data accuracy varies by theme on the map. Using this map for other than its intended purpose may yield inaccurate or misleading results. The USFS reserves the right to correct, update or modify geospatial inputs without notification.

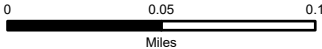




# Columbine Ranger District

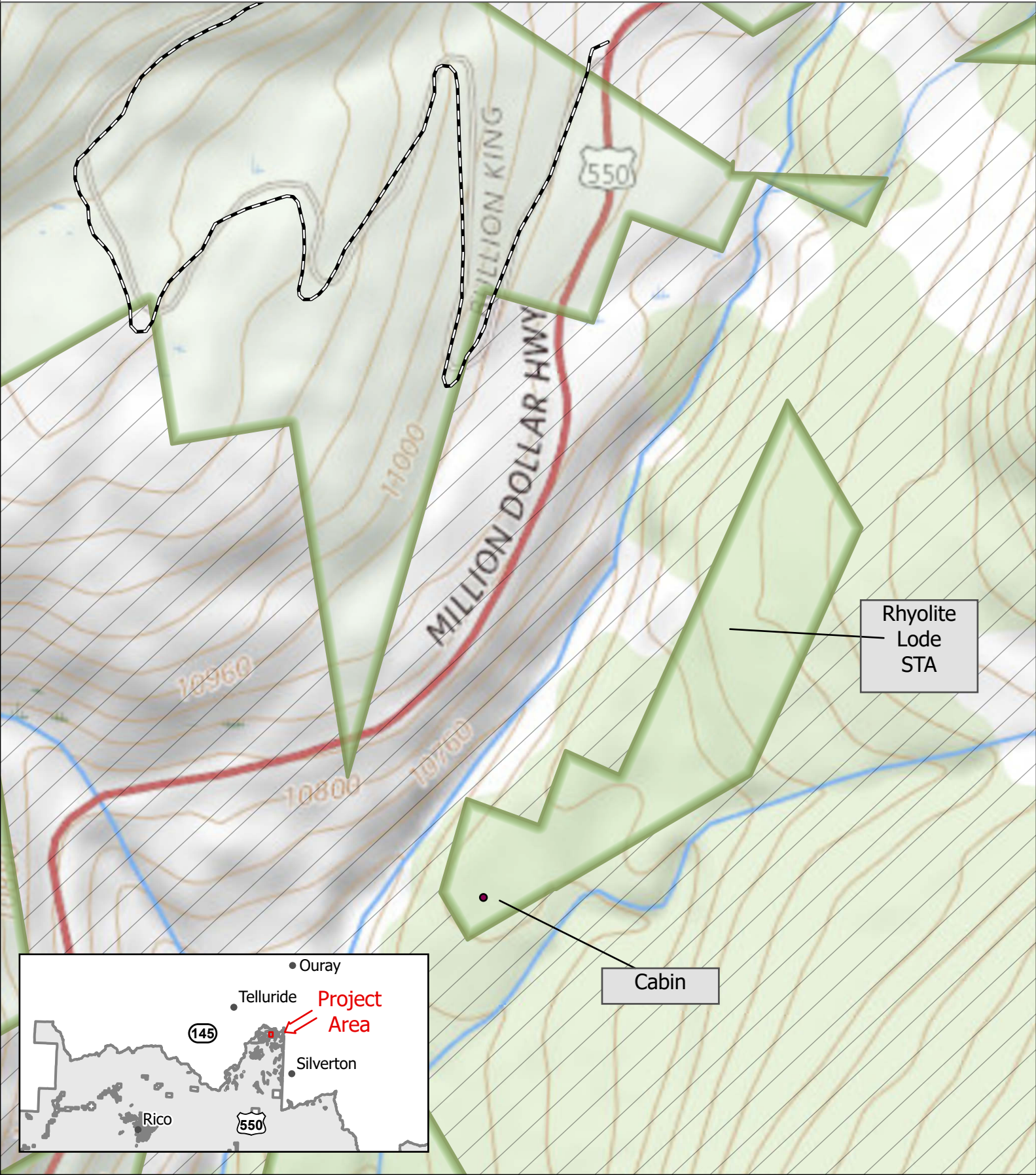
## Map 6 Rhyolite Lode STA

USDA Forest Service  
San Juan National Forest  
Columbine Ranger District



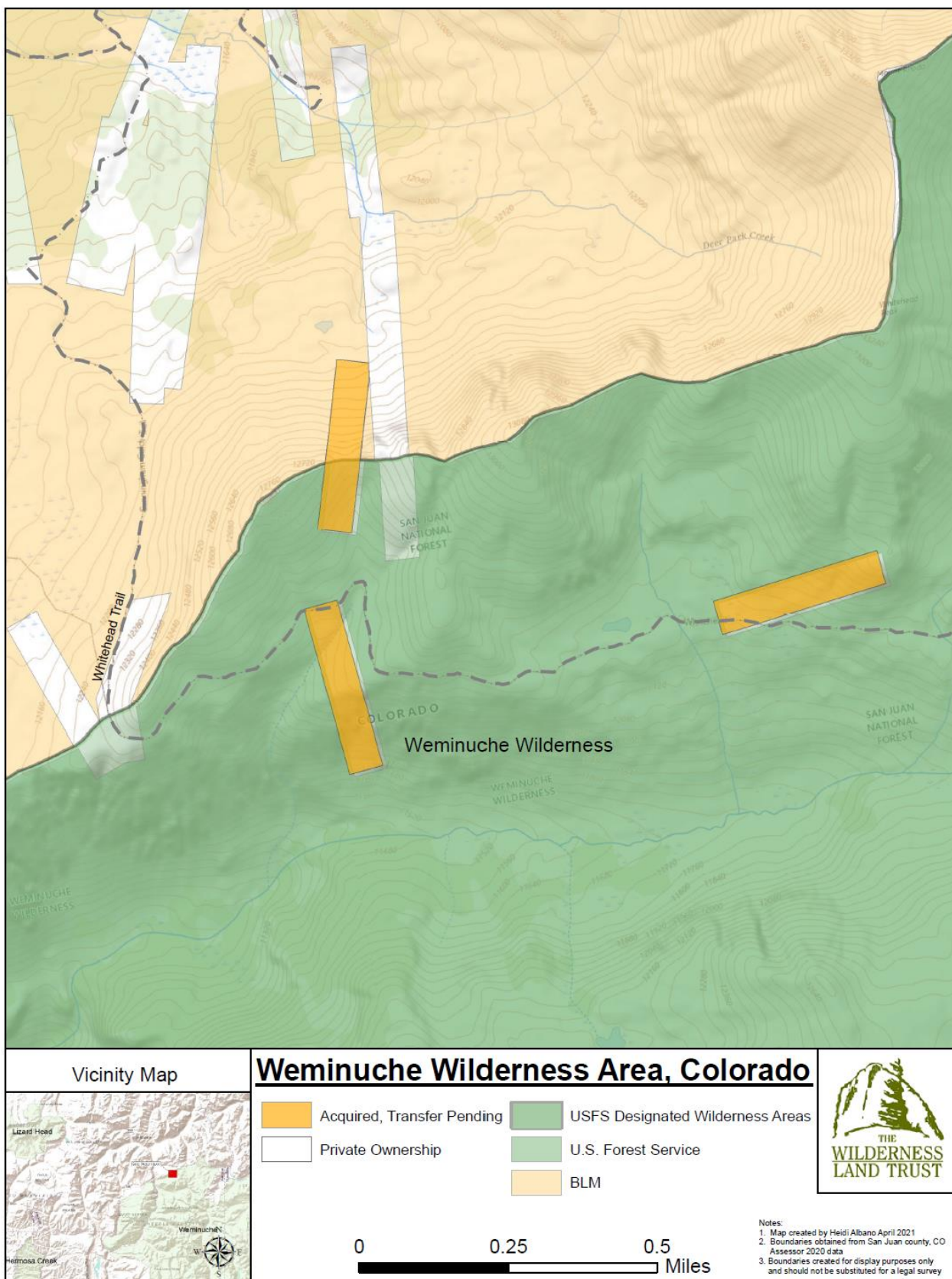
- NF
- PRIVATE
- Roads Open to All Vehicles, Yearlong
- Other Public Roads

The USFS attempts to use the most current and complete geospatial data available. Geospatial data accuracy varies by theme on the map. Using this map for other than its intended purpose may yield inaccurate or misleading results. The USFS reserves the right to correct, update or modify geospatial inputs without notification.





Map 7 - Great Western Lode











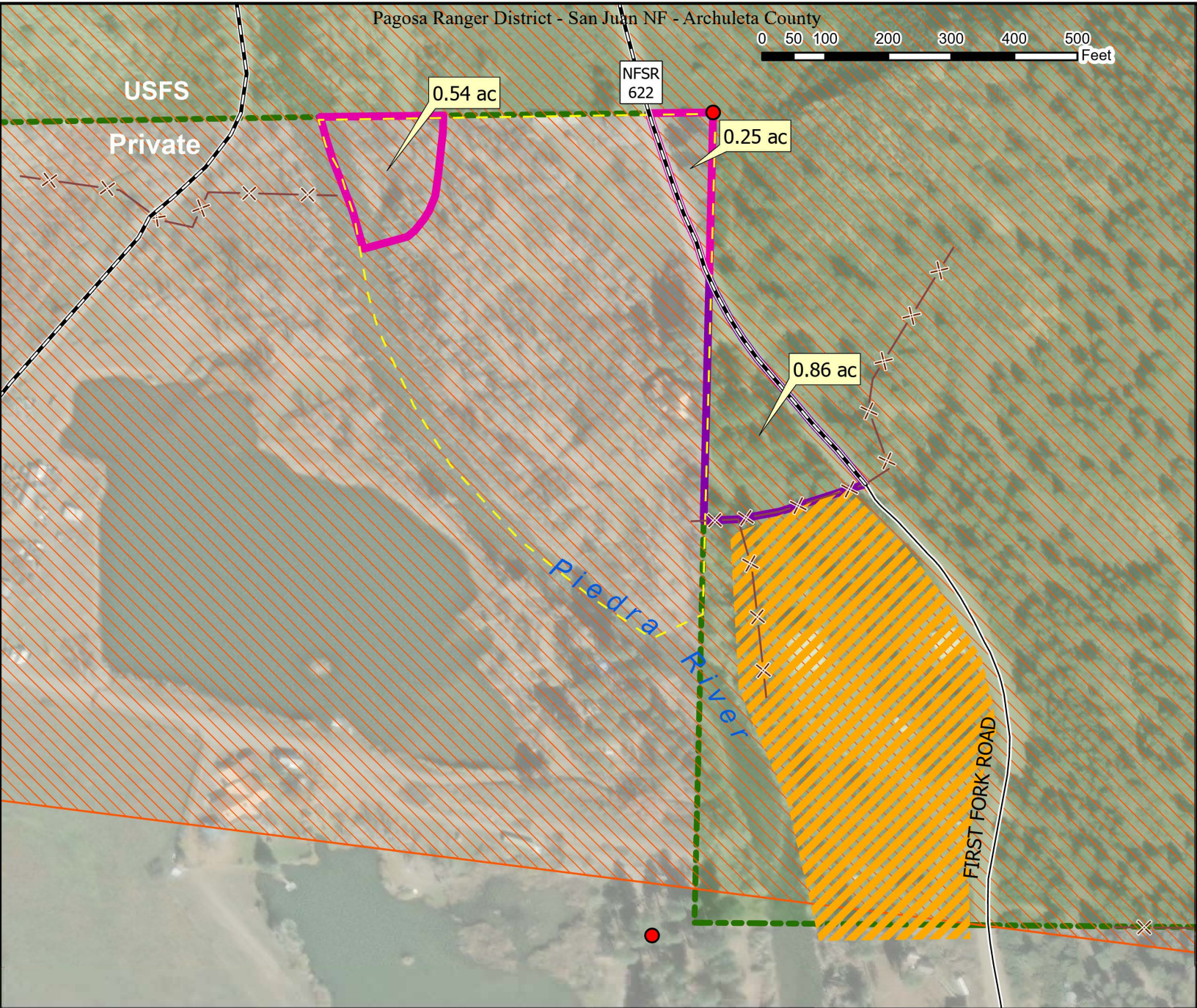
# Map 9 - Proposed First Fork Land Exchange

T34N, R4W, Sec 8  
NMPM

KDT 11/9/2023

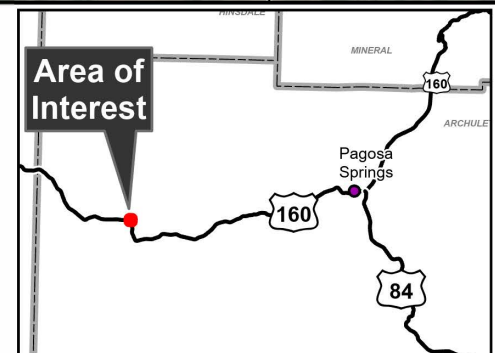
Pagosa Ranger District - San Juan NF - Archuleta County

0 50 100 200 300 400 500  
Feet



## Legend

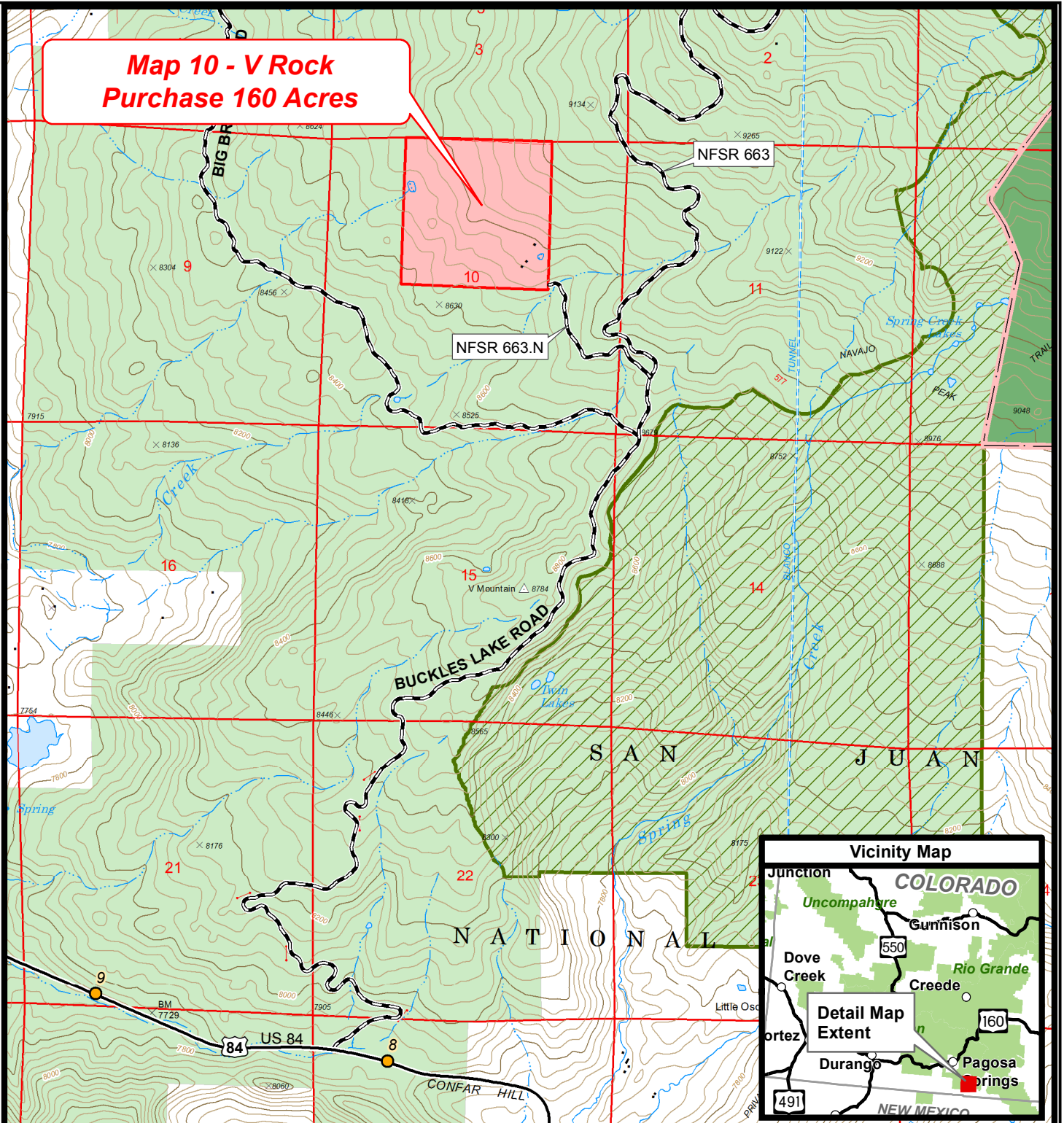
- Proposed Federal Parcel
- Proposed Non-Federal Parcel
- Survey Monument
- Fence
- National Forest System Road
- County Road
- Special Use - CDOT
- Associated Private Parcel
- Suitable Wild & Scenic River Corridor
- National Forest Service Boundary
- Surface Ownership (transparent overlay)
  - Private Lands
  - National Forest



DISCLAIMER: GIS data and product accuracy may vary. The Forest Service reserves the right to correct, update, modify, or replace GIS products without notification. For more information, contact the San Juan NF, Durango, CO. (970) 247-4874



# Map 10 - V Rock Purchase 160 Acres



## References

Map prepared by the U.S. Forest Service, Region 2, San Juan National Forest, Pagosa Ranger District Geographic Information Systems Specialist. Proposed parcel boundaries are general representations and do not represent legal boundary descriptions. Boundary Source: Archuleta County and USFS Staff. Map coordinates in NAD83, UTM Zone 13 north.

## Disclaimer

The USDA Forest Service makes no warranty, expressed or implied regarding the data displayed on this map, and reserves the right to correct, update, modify, or replace this information without notification.

Map Creation Date - September 9, 2021

Sheet 1 of 1



Miles

- MileMarkers
- National Forest System Roads Open to All Vehicles
- US Highway
- VRock Proposed Purchase
- Colorado Roadless Area
- Wilderness
- National Forest
- Private Lands

## VRock FY2023 LWCF Inholding Purchase Map Revision Date: October 5, 2021 Version 1

Legislative Map

T. 33 N, R. 1 E Sec. 10 N.M.P.M.  
Archuleta County, Colorado

U.S. Forest Service - Rocky Mountain Region (Region 2)  
San Juan National Forest  
U.S. Congressional District 3, Colorado

Map prepared by staff at the San Juan National Forest  
Pagosa Ranger District in Pagosa Springs, CO.  
Copies of this map are available  
for public inspection in the Office of the Regional Forester,  
Rocky Mountain Region, Golden, Colorado.