



Forest Service
U.S. DEPARTMENT OF AGRICULTURE

Fire Restrictions: Moderate & High Hazard Areas Stanislaus National Forest



Declining forest moisture and hot weather trends means all visitors must take extra caution to prevent widespread and damaging wildfires on the Stanislaus National Forest. When dry conditions occur, the Forest Supervisor signs a forest order initiating fire restrictions and designating moderate and high fire hazard areas. Detailed maps displaying the various fire hazard zones on the forest are available for viewing at each district office. A map overview of the fire restrictions and hazard zones can be found on the reverse.

Restricted Activities

Within designated fire hazard areas and during fire restrictions, visitors are restricted from the following activities:

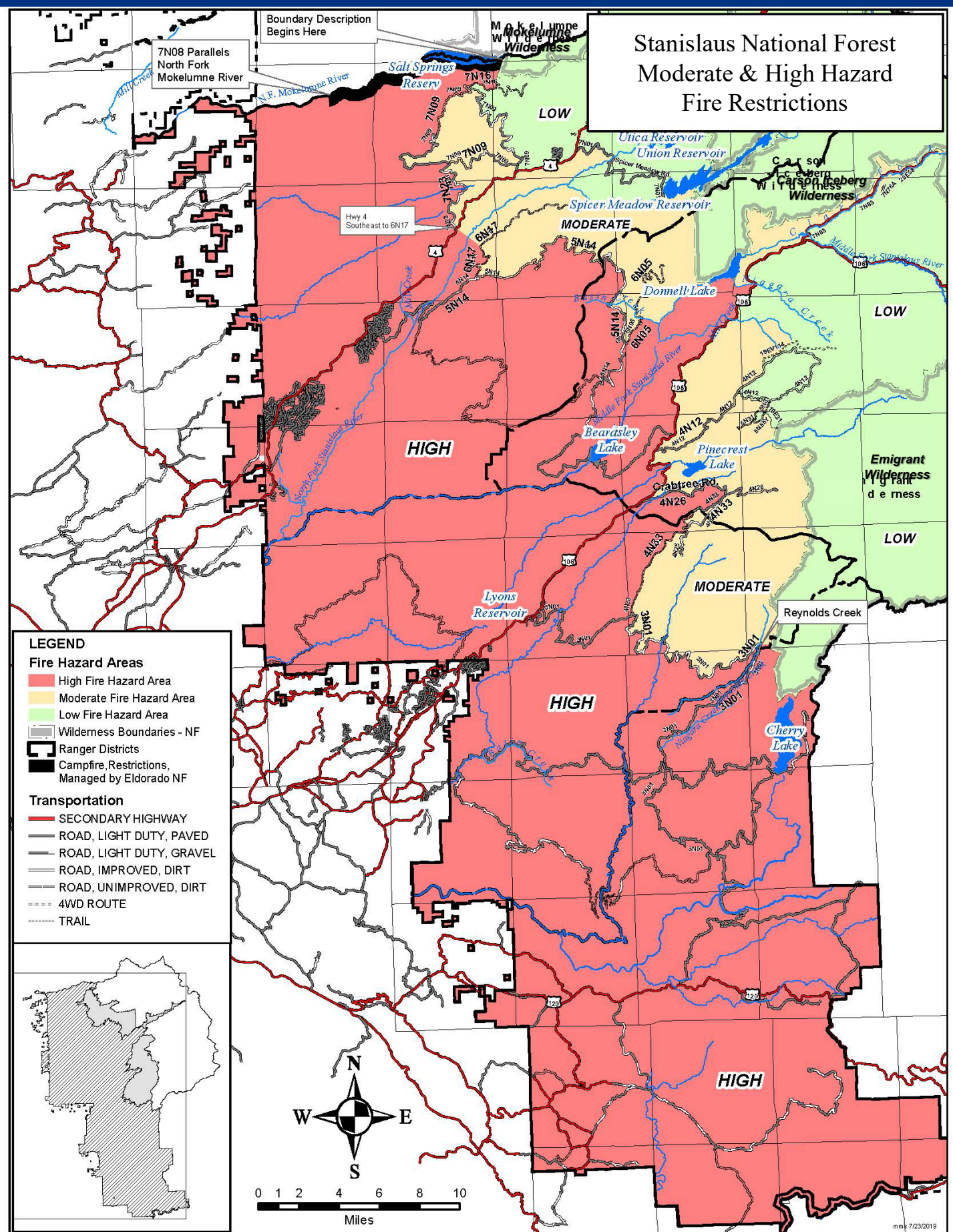
- Discharging a firearm.¹
- Building, maintaining, attending, or using any fire, campfire, barbeque, or stove outside of a developed recreation site.²
- Smoking, except within an enclosed vehicle or building, a developed recreation site, or in areas with at least a three-foot-by-three-foot clearance of all flammable material.
- Welding, operating an acetylene or other torch with an open flame.
- Operating or using any internal or external combustion engine without a spark arresting device that is installed properly and in effective working order, in accordance with USFS guidelines.

Violating these prohibitions is punishable by a fine of not more than \$5,000 or imprisonment for not more than six months, or both.

Woodcutting is also impacted by dry weather and conditions. Woodcutting is allowed with a valid permit on a day-to-day basis, depending on the daily fire danger rating. Call the woodcutting information line at (209) 532-5601 for updates. On identified no-cut days, whipsaws, axes, and other manual means of cutting may be utilized when the use of chainsaws prohibited. All fire precautions outlined on your permit must be followed.

¹Persons with a valid hunting license, hunting during a legal open season, may discharge a firearm at lawful game.

²Persons with a valid California campfire permit may use a portable stove or lantern within high hazard areas if it is fueled by gas, jellied petroleum, or pressurized liquid. Free campfire permits are available at any Forest Service office or online at permit.readyforwildfire.org.



For questions about the forest order or fire restrictions, please check our website, www.fs.usda.gov/stanislaus or contact the Supervisor's Office: (209) 532-3671, 19777 Greenley Road Sonora, CA 95370.