



Forest Service
U.S. DEPARTMENT OF AGRICULTURE

Fuelwood Permits

Stanislaus National Forest

Personal Use Fuel Permits are available for purchase and valid from April 15 through December 15.

Permits

- Fuelwood permits are available on the Stanislaus National Forest beginning April 15.
- Minimum purchase is \$25.00 for two and a half cords, (\$10 per cord)
- Maximum purchase of 10 cords per household per season.

Terms

The permit allows cutting and gathering of "DEAD and DOWN" wood only. **You may not cut standing trees (green or dead) at any time.**

The permit and accompanying load tags entitle the purchaser to transport wood from the forest to the address specified on the permit.

You must check to see if it is a permissive woodcutting day before you begin cutting.

Call (209) 532-5601 for a recorded message or contact any of the offices listed on the day you plan to cut.

Wood cutting, gathering, removing, or hauling is limited to daylight hours (30 minutes before sunrise to 30 minutes after sunset). Do not cut or remove forest products where prohibited.

When gathering fuelwood, you must have a chainsaw, a shovel, and fire extinguisher at the cutting site. Cut in open areas— away from dry grass, leaves, brush, or decaying wood. Motor vehicle travel and parking is limited to one vehicle length (vehicle and trailer) from the National Forest Transportation System Routes. You may not block any road for any amount of time.

Motor Vehicle Use Maps (MVUMs) are available for free at any forest offices, on the Avenza app, or online at: www.fs.usda.gov/activity/stanislaus/recreation/ohv.



Winter and Spring Road Closures

From December 15 to April 15 all forest roads are subject to a seasonal closure due to winter weather. However, snow level usually necessitates an extended closure for the higher elevation routes and some roads are likely to be closed beyond April 15. Check the "Alerts and Closures" page on our website for any Forest Orders and the latest information.

Contact Us:

Supervisor's Office
Stanislaus National Forest
19777 Greenley Road
Sonora, CA 95370
(209) 532-3671

Summit Mi-Wok District
Highway 108 Corridor
1 Pinecrest Lake Rd
Pinecrest, CA 95364
(209) 965-3434

Groveland Ranger District
Highway 120 Corridor
24545 Highway 120
Groveland, CA 95321
(209) 962-7825

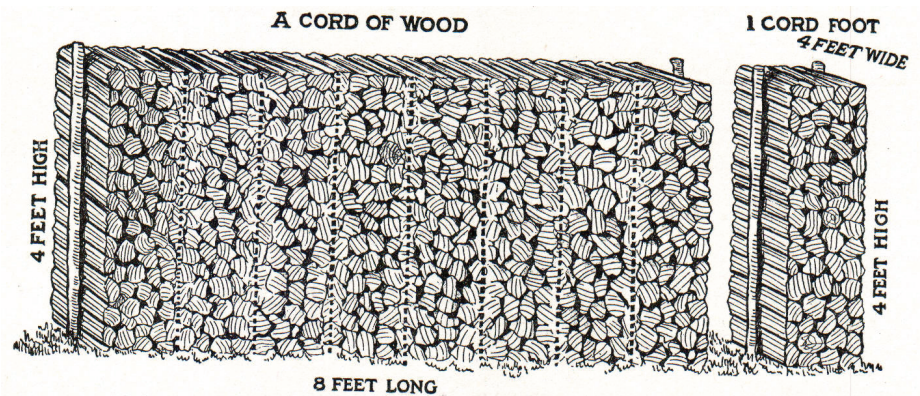
Calaveras Ranger District
Highway 4 Corridor
5519 Highway 4
Hathaway Pines, CA 95223
(209) 795-1381

Most offices are open Monday through Friday, call or visit <https://www.fs.usda.gov/stanislaus> for current hours.

What's a Cord of Wood?

A standard or full cord, a unit of dry volume, is a well-stacked pile that measures 4x4x8 feet (or 128 cubic feet of wood). You can use the chart below to estimate how much firewood your truck can carry.

The term *Cord* most likely originates from the use of a string or cord used to measure this volume amount of wood.



Truck Type	Bed size	Cord Size
Mini	6' x 1½' x 4¾'	30%
Mini (loaded to cab height)	6' x 3' x 4¾'	60%
Mini Longbed	8' x 1½' x 4¾'	40%
½ or ¾ Ton	6' x 2' x 4½'	40%
½ or ¾ Ton (loaded to cab height)	6' x 4' x 4½'	80%
½ or ¾ Ton Longbed	8' x 2½' x 5'	75%
½ or ¾ Ton Longbed (loaded to cab height)	8' x 4' x 5'	120%

Below is an incomplete list of regulations, see the back of your permit for the full list.

- You are responsible for reading, understanding and complying with all the requirements on your permit.
- Permits are nontransferable, the individual named on the permit must be present, load tags and permit must always be in their possession when cutting or gathering wood.
- Obey all posted signs. Do not cut or remove forest products where prohibited. "Closed" areas include but are not limited to: active timber sale areas; areas or roads closed by Forest Order; the Experimental Forest; and campgrounds or administrative sites.
- You are only permitted to cut only on a permissive wood cutting day. Call (209) 532-5601 to confirm it is a permissive wood cutting day before you leave.
- Wood cutting and gathering is limited to daylight hours, 30 minutes before sunrise through 30 minutes after sunset.
- You must have a fire extinguisher and shovel with you when using a chainsaw.
- Complete the "Product Quantity Removal Record" on the first page of your permit before leaving the cutting area.
- Use one tag for each one-quarter cord, or any portion thereof.
- Punch out (do not just mark) wood tags with the correct date and time (AM or PM) before leaving the cutting area.
- Load tags must be attached prior to moving wood and must be visible from rear of load.
- Leave no litter from your removal operations, leave the forest better than you found it.
- Remember, you are liable for fines ranging from \$50 to \$5,000 for violating woodcutting regulations.