



FOUR FOREST RESTORATION INITIATIVE

January 2025 MONTHLY REPORT

January

Fiscal Year 2025

Published On
March 5, 2025

The Four Forest Restoration Initiative (4FRI) is a landscape-level effort to restore 2.4 million acres of ponderosa pine and mixed conifer forests on portions of the Apache-Sitgreaves, Coconino, Kaibab, and Tonto National Forests in northern Arizona. The 4FRI vision is to restore forest ecosystems, reduce threats of destructive wildfire to forest communities, support sustainable forest industries that strengthen local economies, protect critical watersheds, conserve natural resources, maintain aesthetic values, and ensure the long-term success of this project and industry. These watersheds supply water uses including municipal, domestic, irrigation and industrial uses for millions of people in the Phoenix metropolitan area.

The 4FRI Stakeholder Group serves a critical role in collaboratively working together to accomplish the program objectives. The stakeholders have been tracking progress since 2010 and are committed to getting work done on the ground by contributing knowledge, resources, and support.

The objective of this report is to broadly share the successes related to planned and accomplished work across the 4FRI area for commercial thinning, hazardous fuels reduction, and prescribed fire. This report highlights collaborative efforts with partners and industry and showcases ongoing monitoring and innovations.

4FRI Recent Updates

- Acres treated since last report:
 - 4,864 acres of commercial thinning awarded
 - 1,832 acres of commercial thinning implemented
 - 1,356 acres of non-commercial hazardous fuels reduction implemented
 - 25,729 acres of prescribed fire implemented
- 4FRI is one of 21 National Priority Landscapes under the Wildfire Crisis Strategy, <https://www.fs.usda.gov/managing-land/wildfire-crisis>. The Forest Service is stepping up the pace and scale of our fuels and forest health treatments to match the actual scale of wildfire risk.
- FY25 planned treatments across 4FRI:
 - Plan to award around 25,000 acres of commercial thinning contracts
 - Around 7,500 acres non-commercial hazardous fuel reduction
 - over 100,000 acres prescribed burning

Contents

| | | | |
|---|----|---|----|
| 4FRI Vicinity Overview | 2 | Watershed Restoration | 25 |
| Awarded and Completed Timber and Fuels Contracts | 3 | Out-Year Planning | 30 |
| Fiscal Year 2025 Awarded, Ongoing, and Completed Projects | 4 | NEPA Projects in Progress Across 4FRI | 30 |
| High Priority Partner Projects | 10 | Appendix A – Completed Commercial Contracts | 32 |
| Timber Program of Work | 12 | Appendix B – Outyear Projects | 36 |
| Hazardous Fuels and Prescribed Fire | 14 | Appendix C – Definitions | 43 |
| Wildfire with Beneficial Effects | 22 | | |
| Planned Road Work | 22 | | |

4FRI Vicinity Overview

The 4FRI program covers portions of four National Forests in northern Arizona – the Apache-Sitgreaves, Coconino, Kaibab, and Tonto National Forests. The overall 4FRI footprint encompasses roughly 6 million acres (Figure 1). Within this area 4FRI focuses on restoring ponderosa pine forests, which cover around 2.4 million acres within this initiative area footprint (Figure 1). In addition, some woodland and brush treatments to reduce hazardous fuels are included.

The United States Forest Service (hereafter Forest Service) uses a variety of treatment methods to restore ponderosa pine and woodland forests. Commercial thinning operations are used to restore forest structure where ground conditions are suitable for using heavy equipment, non-commercial hazardous fuels treatments are also used to restore forest structure in areas where heavy equipment is not suitable, and prescribed fire is used to reduce forest fuels, restore forest structure, and restore natural processes. To accomplish restoration objectives, these treatment methods may overlap over time and space.

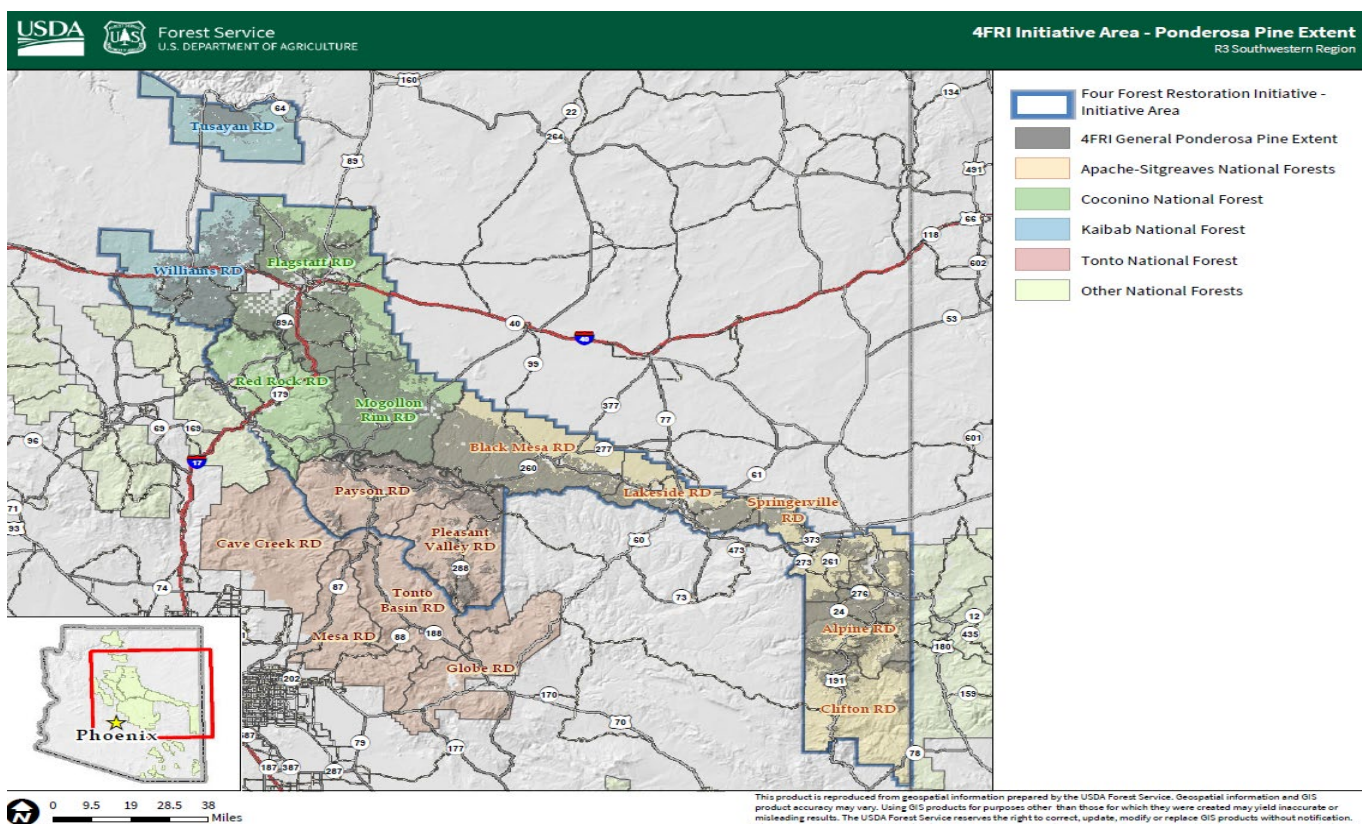


Figure 1. Vicinity Map showing the 4FRI footprint (Initiative Area, blue outline) and extent of ponderosa pine forest (gray area) within the footprint.

Awarded and Completed Commercial Thinning, Non-Commercial Hazardous Fuels Reduction, and Prescribed Fire Treatments– 2010-2024

Forest restoration is a long-term commitment that may require multiple entries, using different restoration methods, to accomplish objectives. Any number of commercial and non-commercial mechanical treatments, pile burning, and broadcast burning could be used on the same piece of ground to restore forest structure and processes. Table 1 provides a summary of all restoration treatments that have occurred annually since 2010 in the 4FRI footprint. This includes acres that were *awarded* in commercial thinning contracts, as well as acres *implemented* on commercial thinning contracts, non-commercial hazardous fuels reduction treatments, broadcast burning, and pile burning. Some of these treatments overlap on the same piece of ground.

Table 1. Summary of Acres Awarded and Completed by Fiscal Year (Oct 1 – Sept 30) since 2010.

| Summary by Fiscal Year | Commercial Thinning Acres Awarded | Commercial Thinning Acres Completed | Non-Commercial Thinning Completed | Broadcast Burn Acres Completed | Pile Burn Acres Completed |
|------------------------|-----------------------------------|-------------------------------------|-----------------------------------|--------------------------------|---------------------------|
| Fiscal Year 2010 | 10,882 | 13,198 | 30,977 | 35,628 | 11,761 |
| Fiscal Year 2011 | 17,638 | 16,277 | 23,507 | 34,019 | 17,741 |
| Fiscal Year 2012 | 10,063 | 8,865 | 29,817 | 28,160 | 6,582 |
| Fiscal Year 2013 | 12,979 | 11,739 | 19,061 | 24,128 | 8,584 |
| Fiscal Year 2014 | 10,730 | 11,278 | 19,495 | 24,717 | 10,057 |
| Fiscal Year 2015 | 21,263 | 16,302 | 25,573 | 33,648 | 10,381 |
| Fiscal Year 2016 | 40,099 | 11,742 | 22,709 | 53,292 | 8,085 |
| Fiscal Year 2017 | 32,514 | 15,118 | 23,008 | 44,155 | 2,399 |
| Fiscal Year 2018 | 21,983 | 9,611 | 27,789 | 66,218 | 6,704 |
| Fiscal Year 2019 | 31,028 | 12,243 | 20,578 | 52,566 | 6,095 |
| Fiscal Year 2020 | 16,430 | 12,446 | 20,656 | 53,379 | 4,831 |
| Fiscal Year 2021 | 6,616 | 18,119 | 20,021 | 11,638 | 3,323 |
| Fiscal Year 2022 | 24,886 | 25,510 | 36,858 | 56,716 | 5,286 |
| Fiscal Year 2023 | 29,956 | 14,567 | 13,566 | 47,565 | 7,550 |
| Fiscal Year 2024 | 32,419 | 16,184 | 18,111 | 88,810 | 11,619 |
| Total Acres: | 319,486 | 213,199 | 351,728 | 654,639 | 120,998 |

In addition to reporting the total acres of treatments conducted, it's also useful to understand the actual footprint of land where restoration treatments have occurred. As noted earlier, multiple treatments could occur on the same piece of ground, so the actual acres restored would be less than the treatment acres conducted. For example, Table 1 could show one acre of commercial thinning and one acre of pile burning, even though those two activities occurred on the same piece of ground. Table 2 on the other hand dissolves treatment types spatially to provide the number of acres that have received one or more restoration treatments since 2010. In addition, Table 2 also provides the number of acres that have had a commercial thinning treatment and a broadcast burn. This information is useful for understanding the overall restoration treatment and potential maintenance needs for post-harvest regeneration.

Table 2. Summary of the actual footprint of land that has had one or more treatments completed between 2010-2022

| Forest | Acres with One or More Treatment | Acres of Commercial Thinning | Total Acres with Commercial Thinning and Broadcast Burn Treatments |
|--------------------|----------------------------------|------------------------------|--|
| Apache-Sitgreaves | 291,402 | 117,373 | 23,499 |
| Coconino | 189,956 | 30,632 | 5,536 |
| Kaibab | 142,136 | 26,810 | 7,695 |
| Tonto | 96,372 | 7,632 | 1,477 |
| TOTAL ACRES | 719,866 | 182,448 | 38,207 |

* These numbers could differ from previous reports. The Forest Service has revised its methods for collecting and sharing data. Current reporting is based on information stored in the Forest Activity Tracking System (FACTS), the official database of record for the Forest Service.

Fiscal Year 2025 Awarded, Ongoing, and Completed Projects

This section of the report summarizes current fiscal year (October 1 – September 30) accomplishments and is updated monthly. Commercial thinning contracts include traditional timber sales, stewardship contracts, and agreements that are part of the Forest Service’s regular program or work and our high-priority partnerships. These two categories (program of work and partnerships) are further split out later in this report. It’s important to note that awarded acres and completed acres in a given fiscal year are often not the same acres. Rather, acres completed in FY25 were often awarded in previous years and acres awarded in FY25 will often be completed in future years, since most contracts take multiple years to complete.

Table 3. Acres awarded and completed in FY25. Many of the acres that are completed in FY25 are from sales that were awarded in previous years. Likewise, many acres that are awarded in FY25 will be completed in out-years.

| FY25Activity Acres Awarded and Completed | Total Acres | Acres Since Last Report |
|--|--------------------|--------------------------------|
| Commercial Thinning Contracts Awarded | 2,346 | 4,864 |
| Commercial Thinning Acres Completed | 7,270 | 1,832 |
| Non-Commercial Hazardous Fuels Contracts Awarded | 7,136 | 59 |
| Non-Commercial Hazardous Fuels Acres Completed | 1,648 | 1,356 |
| Pile Burning Acres Completed | 1,395 | 1,356 |
| Broadcast Burning Acres Completed | 51,728 | 9,669 |
| Managed Wildfire Completed | 19,496 | 14,704 |

Table 4. Currently awarded commercial contracts with ongoing operations. This table is updated monthly and contains a summary of the progress of each commercial contract within 4FRI.

| Forest | Fiscal Year Awarded | Contract Termination Date | Sale Name | Contractor | Total Sale Acres | Total Acres Completed* | Acres Remaining | Acres Harvested FY25** | Acres Completed Since Previous Month* |
|----------|---------------------|---------------------------|-----------------------------|--|------------------|------------------------|-----------------|------------------------|---------------------------------------|
| A-S | FY18 | 12/31/2025 | Ryan Stew. | Tri Star Logging | 1,885 | 492 | 1,393 | 24 | 0 |
| A-S | FY18 | 9/30/2026 | Woods Stew. | Tri Star Logging | 2,066 | 0 | 2,066 | 0 | 0 |
| A-S | FY18 | 7/01/2026 | Burnt Mill Stew. | Tri Star Logging | 931 | 753 | 178 | 0 | 0 |
| A-S | FY18 | 12/31/2023 | Slim Stew ReOffer | TriStar Logging | 1,990 | 1,990 | 0 | 602 | 266 |
| A-S | FY19 | 6/27/2027 | Greens Peak Stew. | Tri Star Logging | 1,140 | 362 | 778 | 0 | 0 |
| A-S | FY19 | 7/15/2026 | Palomino Stew. | Tri Star Logging | 1,682 | 0 | 1,682 | 0 | 0 |
| A-S | FY19 | 9/30/2025 | ELC DxP | R&J ECO-CHALLENGE WEST, Inc. dba Holliday Timber | 2,565 | 2,185 | 380 | 0 | 0 |
| A-S | FY20 | 9/29/2024 | Reagan PJ DxP | Chippin-in, LLC | 2,486 | 1,215 | 1,271 | 0 | 0 |
| A-S | FY21 | 12/31/2025 | Draw Stew. DxP | Canyon CK Logging Inc. | 1,591 | 1,060 | 531 | 0 | 0 |
| A-S | FY21 | 6/01/2028 | Smith Stew. | Tri Star Logging | 2,209 | 532 | 1,677 | 0 | 0 |
| A-S | FY22 | 9/30/2026 | Potato Stew. Re-Offer | Tri Star Logging | 2,659 | 571 | 2,088 | 0 | 0 |
| A-S | FY22 | 12/31/2025 | Morgan North | Chippin-in, LLC | 209 | 0 | 209 | 0 | 0 |
| A-S | FY22 | 6/30/2027 | Mare Stew. | Canyon CK Logging Inc. | 1,596 | 595 | 1,000 | 0 | 0 |
| A-S | FY22 | 9/30/2028 | Promontory Stew. | Tri Star Logging | 2,344 | 0 | 2,300 | 0 | 0 |
| A-S | FY23 | 03/31/2025 | Okty | Tri Star Logging | 1,887 | 660 | 1,227 | 0 | 0 |
| A-S | FY23 | 12/31/2027 | N1 Stew. | Canyon Creek Logging | 1,168 | 0 | 1,168 | 0 | 0 |
| A-S | FY23 | 12/31/2026 | OW | Canyon Creek Logging | 2,001 | 467 | 1,534 | 317 | 317 |
| A-S | FY23 | 12/31/2027 | Stringer | Forest Energy Corp. | 1,979 | 0 | 1,979 | 0 | 0 |
| A-S | FY23 | 12/31/2026 | Noble Mtn DxP | HSC Cutting, LLC | 341 | 341 | 0 | 341 | 341 |
| A-S | FY24 | 12/31/2027 | Beaverhead DxP | R&J ECO-CHALLENGE WEST, Inc. dba Holliday Timber | 2,460 | 0 | 2,460 | 0 | 0 |
| A-S | FY24 | 12/31/2027 | Blue | Canyon Creek Logging | 1,395 | 0 | 1,395 | 0 | 0 |
| A-S | FY24 | 12/31/2027 | Sheep Stew. | Suarez Forestry LLC | 1,497 | 0 | 1,497 | 0 | 0 |
| A-S | FY24 | 12/31/2028 | Whiskey SBA | Suarez Forestry LLC | 1,302 | 0 | 1,302 | 0 | 0 |
| A-S | FY24 | 12/31/2029 | County Line | Restoration Forest Products | 1,106 | 0 | 1,106 | 0 | 0 |
| A-S | FY24 | 12/31/2027 | Johns Canyon | HSC Cutting LLC | 2,230 | 0 | 2,230 | 0 | 0 |
| A-S | FY25 | 12/31/2034 | Beaver ReOffer | Canyon Creek Logging | 963 | 0 | 963 | 0 | 0 |
| ----- | ----- | ----- | ----- | Apache-Sitgreaves Totals: | 47,562 | 15,148 | 32,414 | 2,285 | 924 |
| Coconino | FY15 | 5/15/2023 | Munds Park | Perkins Timber Harvesting | 650 | 650 | 0 | 0 | 0 |
| Coconino | FY17 | 10/15/2023 | Two Joes | Tri Star Logging | 1,528 | 1,152 | 376 | 0 | 0 |
| Coconino | FY19 | 12/31/2023 | A-1 South Multiproduct Sale | Joe Dirt Excavating Inc | 2,470 | 2,429 | 41 | 0 | 0 |

| Forest | Fiscal Year Awarded | Contract Termination Date | Sale Name | Contractor | Total Sale Acres | Total Acres Completed* | Acres Remaining | Acres Harvested FY25** | Acres Completed Since Previous Month* |
|----------|---------------------|---------------------------|---------------------|---------------------------------|------------------|------------------------|-----------------|------------------------|---------------------------------------|
| Coconino | FY19 | 12/3/2028 | General Springs SPA | National Wild Turkey Federation | 3,519 | 472 | 3,047 | 0 | 0 |
| Coconino | FY20 | 12/31/2024 | Horse Park | Dakota Logging | 2,747 | 2,553 | 194 | 0 | 0 |
| Coconino | FY20 | 12/31/2024 | Shultz Tank (6T) | Bob Lee and Sons | 447 | 271 | 176 | 0 | 0 |
| Coconino | FY21 | 12/31/2026 | Willard | Dakota Logging | 2,316 | 1,590 | 726 | 0 | 0 |
| Coconino | FY21 | 12/31/2026 | Mormon Mountain | Suarez Forestry | 640 | 45 | 595 | 0 | 0 |
| Coconino | FY22 | 2/28/2024 | Little Springs GNA | AZDFFM | 383 | 383 | 0 | 351 | 139 |
| Coconino | FY22 | 9/30/2027 | Southside Airport | Bob Lee & Sons | 2,023 | 0 | 2,023 | 0 | 0 |
| Coconino | FY22 | 9/25/2023 | Gifford GNA | Bob Lee & Sons | 2,756 | 742 | 2,014 | 742 | 0 |
| Coconino | FY22 | 9/26/2023 | McCarty GNA | Restoration Forest Products | 1,474 | 0 | 1,474 | 0 | 0 |
| Coconino | FY22 | 9/25/2023 | Roosevelt GNA | Suarez Forestry | 2,284 | 2,058 | 226 | 854 | 0 |
| Coconino | FY23 | 12/31/2027 | Walker Hill Timber | Restoration Forest Products | 1,865 | 1,743 | 122 | 903 | 0 |
| Coconino | FY23 | 12/31/2027 | Frog Tank | Restoration Forest Products | 2,701 | 1,209 | 1,492 | 0 | 0 |
| Coconino | FY23 | | Cragin Johnson | AZDFFM | 596 | 0 | 596 | 0 | 0 |
| Coconino | FY23 | 11/30/2026 | Cragin Kehl | AZDFFM | 1,690 | 422 | 1,268 | 304 | 304 |
| Coconino | FY23 | 11/30/2026 | Cragin Kinder | AZDFFM | 3,491 | 302 | 3,189 | 302 | 0 |
| Coconino | FY24 | 9/30/2028 | Newman Park | Restoration Forest Products | 2,976 | 1,491 | 1,485 | 164 | 43 |
| Coconino | FY24 | | Wing East | Perkins Timber Harvesting | 2,603 | 1,067 | 1,536 | 484 | 0 |
| Coconino | FY24 | | CWPP – Clover | AZDFFM | 2,058 | 0 | 2,058 | 0 | 0 |
| Coconino | FY24 | | A-1 North Re-Offer | Restoration Forest Products | 1,047 | 0 | 1,047 | 0 | 0 |
| Coconino | FY24 | | Bootleg Antelope | Restoration Forest Products | 1,452 | 0 | 1,452 | 0 | 0 |
| Coconino | FY24 | | REPI Marshall | Miller Timber | 2,193 | 406 | 1,787 | 406 | 68 |
| Coconino | FY24 | | Hoch | The Nature Conservancy | 2,045 | 0 | 2,045 | 0 | 0 |
| Coconino | FY24 | | Little Wing | The Nature Conservancy | 332 | 0 | 332 | 0 | 0 |
| Coconino | FY24 | | Brie | Pioneer Forest Products | 1,500 | 0 | 1,500 | 0 | 0 |
| Coconino | FY25 | | Coldwater | AZDFFM – Executed | 1,366 | 0 | 1,366 | 0 | 0 |
| ----- | ----- | ----- | ----- | Coconino Totals: | 55,700 | 18,854 | 36,846 | 4,510 | 554 |
| Kaibab | FY20 | 12/31/2025 | Beacon Box Car | Perkins Timber Harvesting | 1,800 | 1,279 | 521 | 0 | 0 |
| Kaibab | FY21 | 12/31/2024 | Junction | Bob Lee and Sons | 353 | 293 | 60 | 0 | 0 |
| Kaibab | FY22 | 12/31/2026 | Fourtyniner West | Perkins Timber Harvesting | 1,433 | 483 | 950 | 0 | 0 |
| Kaibab | FY23 | 12/31/2026 | Klostermeyer | Dakota Logging | 1,187 | 281 | 906 | 0 | 0 |
| Kaibab | FY24 | 12/31/2028 | Spitz Hill | Joe Dirt Excavating | 1,843 | 0 | 1,843 | 0 | 0 |
| Kaibab | FY24 | 12/31/2025 | Sawmill Springs Bio | The Nature Conservancy | 685 | 685 | 0 | 34 | 0 |
| Kaibab | FY24 | 4/25/2027 | Fourtyniner East | Restoration Forest Products | 1,131 | 178 | 953 | 0 | 0 |
| Kaibab | FY24 | 7/26/2027 | Sitgreaves West | Restoration Forest Products | 1,942 | 0 | 1,942 | 0 | 0 |

| Forest | Fiscal Year Awarded | Contract Termination Date | Sale Name | Contractor | Total Sale Acres | Total Acres Completed* | Acres Remaining | Acres Harvested FY25** | Acres Completed Since Previous Month* |
|--------|---------------------|---------------------------|---------------------|-----------------------------|------------------|------------------------|-----------------|------------------------|---------------------------------------|
| Kaibab | FY24 | 9/20/2027 | Dude | Restoration Forest Products | 1,396 | 0 | 1,396 | 0 | 0 |
| ----- | ----- | ----- | ----- | Kaibab Totals: | 11,770 | 3,199 | 8,571 | 34 | 0 |
| Tonto | FY18 | 4/30/2024 | Diamond Nickel IRTC | Tri Star Logging | 693 | 383 | 310 | 0 | 0 |
| Tonto | FY23 | 12/31/2026 | Pringle Tater Chip | Canyon Creek Logging | 1,873 | 551 | 1,322 | 414 | 352 |
| Tonto | FY23 | | FY23 Pine Canyon | National Forest Foundation | 348 | 0 | 348 | 0 | 0 |
| Tonto | FY24 | | Colcord Stallion | AZDFFM | 2,243 | 0 | 2,243 | 0 | 0 |
| Tonto | FY24 | | Little Nolan | AZDFFM | 110 | 2 | 108 | 2 | 2 |
| Tonto | FY25 | | Colcord Camp Ground | Canyon Creek Logging | 25 | 25 | 0 | 25 | 0 |
| ----- | ----- | ----- | ----- | Tonto Totals: | 5,293 | 961 | 4,332 | 441 | 354 |
| ----- | ----- | ----- | ----- | 4FRI Totals: | 118,959 | 39,303 | 79,656 | 7,270 | 1,832 |

* Acres that are reported as completed are based on when the last log leaves a cutting or payment unit. If only a portion of a given unit are cut, those acres aren't reported until the last log leaves the unit.

**Acres Harvested FY25 include sales that have been completed this fiscal year, but are no longer shown in this table. Completed sales are moved to Table 14 located in Appendix A.

Table 5. Total sale volume, total volume removed, total volume remaining, and current month volume removal is provided to give stakeholders an accounting of monthly timber sale activities. While acres are reported when the last log leaves a given unit, volume removal is reported each month regardless of whether the entire unit was completed. These numbers are derived from the FPFS 4.1.S Report.

| Forest | Sale Name | Conversion Factor (CCF to Tons) | Total Sale Volume (CCF*) | Total Volume Removed (CCF*) | Total Volume Remaining (CCF*) | Total Volume Removed FY25 (CCF*) | Monthly CCF* Removed |
|----------|-------------------------------|---------------------------------|--------------------------|-----------------------------|-------------------------------|----------------------------------|----------------------|
| A-S | Sandstone | | 21,944 | 21,944 | 0 | 2,453 | 0 |
| A-S | Slim | | 21,083 | 19,605 | 1,478 | 2,505 | 151 |
| A-S | Ryan | | 17,785 | 4,142 | 13,627 | 47 | -16 |
| A-S | Burnt Mill Stew. | | 32,865 | 18,768 | 14,097 | 0 | 0 |
| A-S | GP-Greens Peak | 0.36547 | 15,051 | 7,242 | 7,808 | 1,387 | 0 |
| A-S | Palomino | | 12,016 | 0 | 12,016 | 0 | 0 |
| A-S | ELC Timber | | 19,309 | 19,309 | 0 | 0 | 0 |
| A-S | Springs | | 8,984 | 8,984 | 0 | 1,987 | 0 |
| A-S | Reagan PJ | 0.36002 | 6,358 | 4,777 | 1,581 | 0 | 0 |
| A-S | Woods | | 13,949 | 0 | 13,949 | 0 | 0 |
| A-S | Draw Stewardship | | 13,208 | 11,279 | 1,930 | 0 | -1,930 |
| A-S | Smith | | 14,726 | 3,595 | 11,131 | 0 | 0 |
| A-S | Potato | | 16,460 | 3,603 | 12,857 | 0 | 0 |
| A-S | Morgan North | | 530 | 0 | 530 | 0 | -201 |
| A-S | Mare | | 7,747 | 3,134 | 4,612 | 0 | 0 |
| A-S | Promontory | | 15,904 | 0 | 15,904 | 0 | 0 |
| A-S | Okky | | 4,034 | 1,412 | 2,622 | 0 | 0 |
| A-S | Chipmunk | | 14,854 | 14,854 | 0 | 0 | 0 |
| A-S | N1 | | 8,963 | 0 | 8,963 | 0 | 0 |
| A-S | OW Timber | | 4,248 | 874 | 3,374 | 303 | 303 |
| A-S | Noble Mountain | 0.35504 | 3,730 | 2,849 | 880 | 877 | 85 |
| A-S | Stringer | | 6,689 | 0 | 6,689 | 0 | 0 |
| A-S | Beaverhead | | 11,747 | 0 | 11,747 | 0 | 0 |
| A-S | Blue | | 5,567 | 0 | 5,567 | 0 | 0 |
| A-S | Sheep Stewardship | | 3,077 | 0 | 3,077 | 0 | 0 |
| A-S | Whiskey SBA | | 15,503 | 0 | 15,503 | 0 | 0 |
| A-S | County Line DXP | | 3,746 | 0 | 3,746 | 0 | 0 |
| A-S | Johns Canyon | | 11,363 | 0 | 11,363 | 0 | 0 |
| A-S | Beaver ReOffer | | 8,213 | 0 | 8,213 | 0 | 0 |
| ----- | ----- | A-S Totals: | 339,653 | 146,371 | 193,264 | 9,559 | -1,608 |
| Coconino | Two Joes | 0.30977 | 9,504 | 5,590 | 3,914 | 0 | 0 |
| Coconino | A-1 South Multiproduct Sale | 0.29618 | 16,022 | 14,410 | 1,612 | 24 | 0 |
| Coconino | General Springs SPA | 0.30898 | 26,471 | 0 | 26,471 | 0 | 0 |
| Coconino | Shultz Tank (6T) | 0.31684 | 3,465 | 2,762 | 703 | 24 | 24 |
| Coconino | Willard | 0.30376 | 37,469 | 22,817 | 14,653 | 0 | 0 |
| Coconino | Mormon Mountain | 0.30784 | 5,865 | 2,120 | 3,745 | 0 | 0 |
| Coconino | 4FRI PACS (Bonita, Mayflower) | 0.34949 | 4,290 | 4,244 | 46 | 0 | 0 |
| Coconino | Little Springs GNA | 0.30784 | 5,640 | 2,073 | 3,567 | 0 | 0 |
| Coconino | Baker | 0.20805 | 10,525 | 10,525 | 0 | 0 | 0 |
| Coconino | Southside Airport | 0.29763 | 17,928 | 3,569 | 14,358 | 0 | 0 |
| Coconino | Gifford GNA | 0.31039 | 24,983 | 3,712 | 21,270 | 3,712 | 0 |

| Forest | Sale Name | Conversion Factor (CCF to Tons) | Total Sale Volume (CCF*) | Total Volume Removed (CCF*) | Total Volume Remaining (CCF*) | Total Volume Removed FY25 (CCF*) | Monthly CCF* Removed |
|----------|----------------------|---------------------------------|--------------------------|-----------------------------|-------------------------------|----------------------------------|----------------------|
| Coconino | McCarty GNA | 0.31667 | 13,979 | 78 | 13,900 | 23 | 0 |
| Coconino | Roosevelt GNA | 0.30745 | 17,430 | 16,761 | 670 | 3,806 | 0 |
| Coconino | Frog Tank | 0.3004 | 25,618 | 15,383 | 10,236 | 2,949 | 1,770 |
| Coconino | Walker Hill Timber | 0.3019 | 16,442 | 16,128 | 314 | 3,775 | 0 |
| Coconino | Johnney's REPI | | 16,377 | 0 | 16,377 | 0 | 0 |
| Coconino | Newman Park | 0.31732 | 26,091 | 17,924 | 8,167 | 5,470 | 2,485 |
| Coconino | Weimer Springs REPI | | 1,940 | 0 | 1,940 | 0 | 0 |
| Coconino | Kinder | | 25,645 | 3,039 | 22,606 | 3,039 | 0 |
| Coconino | Kehl GNA | | 14,187 | 8,693 | 5,494 | 8,693 | 0 |
| Coconino | Johnson GNA | | 3,777 | 0 | 3,777 | 0 | 0 |
| Coconino | Bootleg Antelope | | 10,116 | 0 | 10,116 | 0 | 0 |
| Coconino | Wing East | | 25,492 | 11,684 | 13,808 | 6,699 | 1,295 |
| Coconino | A-1 North | | 9,146 | 0 | 9,145 | 0 | 0 |
| Coconino | Marshall REPI | | 15,567 | 0 | 15,567 | 0 | 0 |
| Coconino | Brie IRTC | | 7,350 | 0 | 7,350 | 0 | 0 |
| Coconino | Clover | | 24,984 | 0 | 24,984 | 0 | 0 |
| Coconino | Hoch SPA | | 22,311 | 0 | 22,311 | 0 | 0 |
| Coconino | Wing West | | 52,287 | 0 | 52,287 | 0 | 0 |
| ----- | ----- | Coconino Totals: | 490,901 | 161,512 | 329,388 | 38,214 | 5,574 |
| Kaibab | Beacon Box Car | 0.2951 | 15,207 | 10,975 | 4,232 | 0 | 0 |
| Kaibab | Parks West | 0.30653 | 41,306 | 40,942 | 364 | 0 | 0 |
| Kaibab | Fourtyniner West | 0.31286 | 14,733 | 2,806 | 11,927 | 0 | 0 |
| Kaibab | Holden | 0.31771 | 13,367 | 13,367 | 0 | 198 | 0 |
| Kaibab | Government Prairie | 0.24319 | 11,817 | 11,817 | 0 | 133 | 0 |
| Kaibab | Klostermeyer | 0.31844 | 10,122 | 2,411 | 7,711 | 0 | 0 |
| Kaibab | Spitz Hill | | 15,021 | 1,262 | 13,759 | 751,262 | 505 |
| Kaibab | Sawmill | | 6,766 | 5,947 | 819 | 4,585 | 847 |
| Kaibab | Fourtyniner East | | 13,026 | 2,279 | 10,748 | 0 | 0 |
| Kaibab | Sitgreaves West | | 12,943 | 0 | 12,943 | 0 | 0 |
| Kaibab | Dude | | 11,430 | 0 | 11,430 | 0 | 0 |
| ----- | ----- | Kaibab's Totals: | 165,738 | 91,806 | 73,933 | 756,178 | 1,352 |
| Tonto | Diamond Nickel IRTC | 0.32262 | 6,691 | 4,733 | 1,958 | 0 | 0 |
| Tonto | Pringle Tater Chip | 0.31615 | 13,620 | 5,589 | 8,031 | 3,961 | 1,595 |
| Tonto | Pine Canyon Phase II | | 2,824 | 0 | 2,824 | 0 | 0 |
| ----- | ----- | Tonto Totals: | 23,135 | 10,322 | 12,813 | 3,961 | 1,595 |
| ----- | ----- | 4FRI Totals: | 1,019,427 | 410,011 | 609,398 | 807,912 | 6,913 |

* Volume includes total volume for all species and products. Tons are converted to CCF for the purposes of this report. Future reports will incorporate a conversion factor for converting CCF to tons.

High Priority Partner Projects

The 4FRI Restoration Strategy identified nine projects across 4FRI that have a high potential to significantly reduce the risk of catastrophic wildfire by addressing immediate, pressing safety needs that are most threatening to communities today. These critical projects are being implemented through partnerships, using the Good Neighbor Authority (GNA) and Master Stewardship Agreements (MSA). High priority partner projects on the Coconino National Forest will include product removal. High-priority partner projects on the Kaibab National Forest will not include product removal and will instead focus on non-commercial hazardous fuel reduction. High-priority partner projects on the Tonto National Forest will have limited commercial timber product removal and will primarily be composed of mechanical mastication of hazardous fuels and non-commercial thinning work.

Table 6. List of High Priority Partner Projects, including FY25 planned and awarded agreements.

| Priority Project | Primary Partner | Total Project Acres | Fiscal Year/Individual Project Name | Treatment Method | Individual Project Acres | Total Acres Awarded To-Date | Acres Remaining |
|--|-----------------|---------------------|-------------------------------------|------------------|--------------------------|-----------------------------|-----------------|
| Flagstaff Watershed Protection Project | COF | 8,669 | FY22 FWPP Deck Sale | Non-Commercial | 0 | 0 | 3,475 |
| | | | FFY18 Elden Base | Commercial | 644 | 644 | |
| | | | FY19 FWPP Helicopter | Commercial | 583 | 583 | |
| | | | FY20 Schultz Tank | Commercial | 271 | 271 | |
| | | | FY20 FWPP Steep Slope | Commercial | 414 | 414 | |
| | | | FY21 Dry Lake Hills | Commercial | 391 | 391 | |
| REPI | NFF, CC | 6,297 | FY23 Johnny's | Commercial | 2,670 | 2,670 | 913 |
| | | | FY23 Weimer Commercial | Commercial | 363 | 363 | |
| | | | FY23 Weimer Non-Commercial | Non-Commercial | 158 | 158 | |
| | | | FY24 Marshall | Commercial | 2,269 | 2,193 | |
| Innovations | TNC | 5,000 | FY22 Walker Hill Demo | Commercial | 410 | 410 | 3,905 |
| | | | FY24 Sawmill Springs | Commercial | 685 | 685 | |
| | | | FY25 Kachina | Commercial | 2,500 | 0 | |
| Cragin | AZDFFM/WTF | 30,833 | FY19 General Springs | Commercial | 3,519 | 3,519 | 10,597 |
| | | | FY22 Baker | Commercial | 1,010 | 1,010 | |
| | | | FY22 McCarty | Commercial | 1,474 | 1,474 | |
| | | | FY22 Roosevelt | Commercial | 2,284 | 2,284 | |
| | | | FY22 Gifford | Commercial | 2,756 | 2,756 | |
| | | | FY23 Johnson | Commercial | 650 | 596 | |
| | | | FY23 Kehl | Commercial | 1,722 | 1,690 | |
| | | | FY23 Kinder | Commercial | 3,491 | 3,491 | |
| | | | FY24 Clover | Commercial | 2,058 | 2,058 | |
| | | | FY25 Coldwater | Commercial | 1,358 | 1,358 | |
| Upper Rio de Flag | TNC, NFF | 4,963 | FY24 Hoch SPA | Commercial | 2,045 | 2,045 | 2,586 |
| | | | FY24 Little Wing SPA | Commercial | 332 | 332 | |
| | | | FY25 Derffer | Commercial | 2,586 | 0 | |
| Bill Williams | NFF, CC | 15,200 | FY20 Steep Slope Phase 1 | Non-Commercial | 300 | 300 | 14,439 |
| | | | FY21 Steep Slope Phase 2 | Non-Commercial | 176 | 176 | |
| | | | FY22 Steep Slope Phase 3 | Non-Commercial | 285 | 285 | |
| | | | FY24 106 Ski Area | Non-Commercial | 43 | 0 | |

| Priority Project | Primary Partner | Total Project Acres | Fiscal Year/Individual Project Name | Treatment Method | Individual Project Acres | Total Acres Awarded To-Date | Acres Remaining |
|------------------------------------|-----------------|---------------------|-------------------------------------|------------------|--------------------------|-----------------------------|-----------------|
| | | | FY24 122 Fuelbreak Extension | Non-Commercial | 425 | 0 | |
| Dude Fire Restoration Project | AZDFFM | 9,000 | FY22 Dude Fire Restoration Phase I | Mastication | 1,440 | 1,440 | 4,358 |
| | | | FY23 Dude Fire Restoration Phase 2 | Mastication | 1,144 | 1,144 | |
| | | | FY24 Dude Fire Restoration Phase 3 | Mastication | 2,058 | 2,058 | |
| Greater Payson DFFM | AZDFFM | 8,777 | FY22 Roberts | Mastication | 588 | 588 | 5,635 |
| | | | FY22 Keger | Mastication | 209 | 209 | |
| | | | FY22 Pringle Tater Chip | Mastication | 31 | 31 | |
| | | | FY23 Greater Payson Phase 1 | Mastication | 2,314 | 2,314 | |
| | | | FY25 Greater Payson Phase 2 | Mastication | 4,309 | 0 | |
| Woodland Flying V&H, Dead Man Mesa | NFF | 6,729 | FY23 Deadman Mesa | Mastication | 2,749 | 2,749 | 2,182 |
| | | | FY22 Flying V&H | Mastication | 1,798 | 1,798 | |
| Pine Canyon | NFF | 455 | FY23 Pine Canyon Ground Based | Commercial | 350 | 348 | 0 |
| | | | FY24 Pine Canyon Steep Slope | Commercial | 107 | 107 | |
| Tonto North-zone Timber GNA | DFFM | 3,072 | FY23 Poco Pino | Commercial | 718 | 718 | 0 |
| | | | FY24 Colcord Stallion | Commercial | 2,243 | 2,243 | |
| | | | FY24 Little Nolan CG | Commercial | 111 | 111 | |
| Black River | NFF | 20,000 | FY25 Taylor Sinks SPA | Commercial | 2,162 | 0 | 0 |
| TOTALS | ----- | 118,995 | ----- | ----- | 60,203 | 48,014 | 48,090 |

* AZDFFM = Arizona Department of Forestry and Fire Management. CC = Coconino County. COF = City of Flagstaff. DOD = Department of Defense. NFF = National Forest Foundation. TNC = The Nature Conservancy. WTF = Wild Turkey Foundation

Commercial Timber Program of Work

This section includes a summary of planned commercial thinning projects in FY25. These projects use commercial timber sales or stewardship contracts that contain product removal. There is significant prep work required to prepare a timber sale for bid. The prep work includes surveys for numerous resources including archaeology and special status wildlife species. The projects must follow the design criteria (sometimes called design features, conservation or mitigation measures, or best management practices) identified in the associated National Environmental Policy Act (NEPA) document. The timber units must be cruised and marked in preparation for the contract. It takes multiple years to conduct surveys and prepare the timber units for sale. The projects and acres contained in this table are current estimates and are subject to change to enable the program manager to respond to a variety of external and internal factors. Entities outside the Forest Service should not rely on this information when making decisions that affect their business or organization. For a more concrete list of contract offerings expected within the next six months, please check with individual Forest's timber program managers.

Table 7. List of commercial thin contracts planned by forest in FY25.

| Forest | District | NEPA Document Title | Sale Name | Acres Planned | Acres Awarded |
|-------------------|--------------|--------------------------|--|---------------|---------------|
| Apache-Sitgreaves | Black Mesa | Rim Country EIS | Beaver Reoffer | 964 | 963 |
| Apache-Sitgreaves | Alpine | Black River EA | BR – Taylor Sink SA | 2,162 | 0 |
| Apache-Sitgreaves | Lakeside | Upper Rocky Arroyo EA | Ridge | 489 | 0 |
| Apache-Sitgreaves | Lakeside | Carlisle Complex AMP | Rattler Biomass | 700 | 0 |
| ----- | ----- | ----- | Apache-Sitgreaves Total FY25 Acres | 4,315 | 963 |
| Coconino | Flagstaff | Hart Prairie | Derffer | 3,116 | 0 |
| Coconino | Flagstaff | Wing Mountain | Wing West | 4,688 | 4,864 |
| Coconino | Mogollon Rim | 4FRI 1 st EIS | Sawmill | 2,345 | 0 |
| Coconino | Flagstaff | 4FRI 1 st EIS | Kachina (Pumphouse) | 2,500 | 0 |
| Coconino | Mogollon Rim | Rim Country | Little Bee | 1,100 | 0 |
| Coconino | Mogollon Rim | Clints Well | Two Joes 2 | 900 | 0 |
| Coconino | Mogollon Rim | CC Cragin | Cold Water | 1,366 | 1,358 |
| ----- | ----- | ----- | Coconino Total FY25 Acres | 16,015 | 6,222 |
| Kaibab | Williams | Dogtown | Dog | 1,638 | 0 |
| Kaibab | Williams | 4FRI 1 st EIS | Hardy Hill | 1,188 | 0 |
| Kaibab | Williams | 4FRI 1 st EIS | Chalendar | 1,038 | 0 |
| ----- | ----- | ----- | Kaibab Total FY25 Acres | 3,864 | 0 |
| Tonto | Payson | Rim Country EIS | Keger | 1,539 | 0 |
| Tonto | | Chamberlain | Colcord Campground | 25 | 25 |
| ----- | ----- | ----- | Tonto Total FY25 Acres | 1,564 | 25 |
| ----- | ----- | ----- | 4FRI Total FY25 Acres Planned and Awarded | 25,758 | 7,210 |

Non-Commercial Hazardous Fuel Reduction and Prescribed Fire

This section includes a summary of planned treatments and acres implemented for non-commercial hazardous fuel reduction, prescribed fire, and managed wildfire for FY25. Hazardous fuels reduction, shown in Table 8, includes non-commercial treatments that don't result in product removal and include treatment methods including mastication and thinning with chainsaws. Prescribed fire, shown in Table 9, includes broadcast burning, pile burning, and managed wildfire. Forests do not anticipate having the ability to implement all broadcast burns listed in this table, but rely on having a large pool of projects ready to implement to provide fire managers with the ability to move operations to areas where burn windows are favorable. Actual prescribed fire target acres for each forest are approximately 35,000 acres per year for the Apache-Sitgreaves (~46,000 acres shown), 20,000 acres per year for the Coconino (~60,000 acres shown), 20,000 acres per year for the Kaibab (~28,000 acres shown), and 14,000 acres per year for the Tonto (~23,000 acres shown).

Table 8. List of non-commercial hazardous fuels reduction projects planned, awarded, and implemented by forest in FY25.

| Forest | District | NEPA Document Title | Project Name | Treatment Type | FY25 Acres Hazardous Fuels Planned | FY25 Acres Hazardous Fuels Awarded | FY25 Acres Hazardous Fuels Implemented |
|-------------------|--------------|--|----------------------------|-------------------------|------------------------------------|------------------------------------|--|
| Apache-Sitgreaves | Black Mesa | RCRX | FY23 Ross Draw | Mastication | 0 | 0 | 0 |
| Apache-Sitgreaves | Black Mesa | RCRX | FY23 Ross Draw | Mastication | 0 | 0 | 0 |
| Apache-Sitgreaves | Apache | Black River | FY23 Big Lake | Hand Thinning | 0 | 0 | 0 |
| Apache-Sitgreaves | Apache | Black River | FY23 Big Lake | Mastication | 0 | 0 | 0 |
| Apache-Sitgreaves | Apache | Upper Rocky Arroyo | FY25 Turkey PCT | Hand Thinning | 59 | 59 | 0 |
| ----- | ----- | ----- | ----- | FY25 A-S Totals: | 59 | 59 | 0 |
| Coconino | Flagstaff | 4FRI 1st EIS | FR 556 Phase 1 | Hand Thinning | 0 | 0 | 0 |
| Coconino | Flagstaff | 4FRI 1st EIS/ Eastside EA | FR 556 Phase 2 | Hand Thinning | 0 | 0 | 0 |
| Coconino | Flagstaff | 4FRI 1st EIS | Pumphouse Wash | Hand Thinning | 0 | 0 | 0 |
| Coconino | Flagstaff | 4FRI 1st EIS | Chapel (Force Account) | Hand Thinning | 0 | 0 | 0 |
| Coconino | Flagstaff | Flagstaff Watershed Protection Project | FY23 FWPP - Weimer Springs | Hand Thinning | 0 | 0 | 0 |
| Coconino | Flagstaff | Wing Mountain | FY23 Snowbowl Rd Phase 2 | Hand Thinning | 0 | 0 | 0 |
| Coconino | Flagstaff | 4FRI 1st EIS | FY23 Woody '04 Phase 2 | Mastication | 0 | 0 | 0 |
| Coconino | Flagstaff | 4FRI 1st EIS | FY23 A1 South Phase 1 | Mastication | 0 | 0 | 0 |
| Coconino | Mogollon Rim | Rim Country | FY23 Mogollon Fuel Break | Hand Thinning | 0 | 0 | 0 |
| Coconino | Mogollon Rim | Clints Well | FY23 Lodge Fuel Break | Hand Thinning | 0 | 0 | 0 |

| Forest | District | NEPA Document Title | Project Name | Treatment Type | FY25 Acres Hazardous Fuels Planned | FY25 Acres Hazardous Fuels Awarded | FY25 Acres Hazardous Fuels Implemented |
|----------|--------------|--|--------------------------------------|------------------------------|------------------------------------|------------------------------------|--|
| Coconino | Mogollon Rim | MRRD Oystershell Scale Mitigation Trials | FY23 OSS Mitigation Trials | Hand Thinning | 0 | 0 | 0 |
| Coconino | Mogollon Rim | CC Cragin | FY23 Cragin Mastication | Mastication | 0 | 0 | 0 |
| Coconino | Flagstaff | Jack Smith Schultz | FY24 89 Mesa Phase 1 | Hand Thinning | 0 | 0 | 0 |
| Coconino | Mogollon Rim | CC Cragin | FY24 Cragin Thinning/Chipping | Hand Thinning | 0 | 0 | 0 |
| Coconino | Flagstaff | Woody Ridge | FY24 Woody '05 Phase 1 | Mastication | 0 | 0 | 0 |
| Coconino | Flagstaff | 4FRI 1 st EIS | FY24 FR556 (*Workforce) | Hand Thinning | 0 | 0 | 0 |
| Coconino | Flagstaff | Jack Smith Schultz/ Eastside | FY24 Weatherford | Mastication | 0 | 0 | 0 |
| Coconino | Flagstaff | 4FRI 1 st EIS | FY24 Schultz Tank | Hand Thinning | 0 | 0 | 0 |
| Coconino | Flagstaff | 4FRI 1 st EIS | FY24 Chimney Springs | Hand Thinning | 0 | 0 | 0 |
| Coconino | Flagstaff | Jack Smith Schultz | FY24 89 Mesa Phase 2 | Hand Thinning | 0 | 0 | 98 |
| Coconino | Flagstaff | 4FRI 1 st EIS | FY24 A1 South Phase 2 | Mastication | 0 | 0 | 0 |
| Coconino | Mogollon Rim | Rim Country EIS | FY24 Limestone Tank | Hand Thinning | 0 | 0 | 0 |
| Coconino | Mogollon Rim | Rim Country EIS | FY24 Merrit Springs | Hand Thinning | 0 | 0 | 0 |
| Coconino | Flagstaff | 4FRI 1 st EIS | FY24 PODS TSI IDIQ | Mechanical Thinning | 0 | 0 | 0 |
| Coconino | Red Rock | Cedar Flats EA | FY24 Cedar Flats C | Hand Thinning | 0 | 0 | 0 |
| Coconino | Mogollon Rim | Clints Well | FY24 Natural Tanks TSI Phase 3 | Hand Thinning | 0 | 0 | 0 |
| Coconino | Mogollon Rim | MRRD Oystershell Mitigation | FY24 OSS Mitigation Trials | Hand Thinning | 0 | 0 | 0 |
| Coconino | Flagstaff | Flagstaff Watershed Protection | FY24 Schultz Tank After Sale Phase 2 | Mastication | 0 | 0 | 0 |
| Coconino | Flagstaff | | FY24 Wood for Life Phase 3 | Hand Thinning | 0 | 0 | 0 |
| Coconino | Flagstaff | | FY24 Wood for Life Phase 2 & 3 | Mastication | 0 | 0 | 869 |
| Coconino | Flagstaff | 4FRI 1 st EIS | FY25 FR556 Force Acct | Hand Thinning | 114 | 0 | 0 |
| ----- | ----- | ----- | ----- | FY25 Coconino Totals: | 114 | 0 | 967 |

| Forest | District | NEPA Document Title | Project Name | Treatment Type | FY25 Acres Hazardous Fuels Planned | FY25 Acres Hazardous Fuels Awarded | FY25 Acres Hazardous Fuels Implemented |
|--------|----------|--------------------------|--|----------------------------|------------------------------------|------------------------------------|--|
| Kaibab | Williams | Southzone Grasslands | FY24 Keyhole Sink FA thin/pile | Hand Thinning | 0 | 0 | 0 |
| Kaibab | Tusayan | 4FRI 1 st EIS | FY23 Twin Tanks | Mechanical Thinning | 0 | 0 | 436 |
| Kaibab | Tusayan | 4FRI 1 st EIS | FY24 Boggy Tank | Hand Thinning | 0 | 0 | 0 |
| Kaibab | Williams | 4FRI 1 st EIS | FY24 Fues Hill DZR Thinning Piling | Mechanical Thinning | 0 | 0 | 0 |
| Kaibab | Williams | Bill Williams EIS | FY24 Steep Slope 4 (SS4) | Mechanical Thinning | 0 | 0 | 0 |
| Kaibab | Williams | Bill Williams EIS | FY24 Steep Slope IRSC | Mechanical Thinning | 0 | 0 | 0 |
| Kaibab | Williams | Bill Williams EIS | FY24 Twin Springs Fuelbreak Buffer Extension | Mechanical Thinning | 0 | 0 | 0 |
| Kaibab | Tusayan | 4FRI 1 st EIS | FY24 TSI | Hand Thinning | 0 | 0 | 0 |
| Kaibab | Tusayan | 4FRI 1 st EIS | FY24 Reed TSI Thinning | Hand Thinning | 0 | 0 | 0 |
| Kaibab | Tusayan | 4FRI 1 st EIS | FY24 Curley Wallace FA DZR thin/pile | Mechanical Thinning | 0 | 0 | 0 |
| Kaibab | Williams | Southzone Grasslands | FY24 New Automobile | Mechanical Thinning | 0 | 0 | 0 |
| Kaibab | Williams | Southzone Grasslands | FY24 McDougal Flat | Hand Thinning | 0 | 0 | 0 |
| Kaibab | Tusayan | Southzone Grasslands | FY24 Irishman Dam FA DZR thin/pile | Mechanical Thinning | 0 | 0 | 0 |
| Kaibab | Tusayan | Southzone Grasslands | FY24 Curry/Food Plot | Mastication | 0 | 0 | 0 |
| Kaibab | Tusayan | Southzone Grasslands | FY24 Clark Phase 1 | Mastication | 0 | 0 | 0 |
| Kaibab | Tusayan | Southzone Grasslands | FY24 Clark Phase 2 | Mastication | 0 | 0 | 0 |
| Kaibab | Tusayan | Southzone Grasslands | FY24 NRCS projects Existing (3 projects) | Mechanical Thinning | 0 | 0 | 0 |
| Kaibab | Tusayan | Southzone Grasslands | FY24 NRCS projects Planned (2 projects) | Mechanical Thinning | 0 | 0 | 0 |
| Kaibab | Williams | Southzone Grasslands | FY25 Little ASO DZR Thinning | Mechanical Thinning | 184 | 0 | 0 |
| Kaibab | Williams | 4FRI 1 st EIS | FY25 Hill FA DZR Thinning | Mechanical Thinning | 169 | 0 | 0 |
| Kaibab | Tusayan | 4FRI 1 st EIS | FY25 Boggy Tank FA Hand Thinning | Mechanical Thinning | 48 | 0 | 0 |
| Kaibab | Tusayan | 4FRI 1 st EIS | FY25 Reed TSI | Hand Thinning | 46 | 0 | 0 |
| Kaibab | Tusayan | 4FRI 1 st EIS | FY25 Boggy Tank | Hand Thinning | 48 | 0 | 0 |
| ----- | ----- | ----- | ----- | FY25 Kaibab Totals: | 495 | 0 | 436 |

| Forest | District | NEPA Document Title | Project Name | Treatment Type | FY25 Acres Hazardous Fuels Planned | FY25 Acres Hazardous Fuels Awarded | FY25 Acres Hazardous Fuels Implemented |
|--------|-----------------|-----------------------|--|---------------------------|------------------------------------|------------------------------------|--|
| Tonto | Payson | Rim Country EIS | FY22 Dude Fire Restoration | Mastication | 0 | 0 | 0 |
| Tonto | Payson | | FY22 Keger Mastication | Mastication | 0 | 0 | 0 |
| Tonto | Payson | Christopher-Hunter EA | FY23 Mastication Maintenance | Mastication | 0 | 0 | 0 |
| Tonto | Payson | | FY22 Pringle Mastication | Mastication | 0 | 0 | 0 |
| Tonto | Payson | Lion WUI EA | FY23 Lion Mastication Maintenance | Mastication | 0 | 0 | 0 |
| Tonto | Payson | Myrtle EA | Myrtle | Mastication | 0 | 0 | 0 |
| Tonto | Pleasant Valley | Rim Country | FY23 Cherry Frio Mastication Maintenance | Mastication | 0 | 0 | 0 |
| Tonto | Pleasant Valley | Rim Country | FY23 Vosberg Mastication Maintenance | Mastication | 0 | 0 | 0 |
| Tonto | Pleasant Valley | Rim Country | FY23 Buzzard Roost Mastication Maintenance | Mastication | 0 | 0 | 0 |
| Tonto | Payson | Rim Country | FY23 Houston Mesa Mastication Maintenance | Mastication | 0 | 0 | 0 |
| Tonto | Payson | Rim Country | FY23 Dude Fire Phase II | Mastication | 0 | 0 | 245 |
| Tonto | Payson | Payson WUI EA | FY23 South Payson | Mastication | 0 | 0 | 0 |
| Tonto | Payson | Payson WUI EA | FY24 Greater Payson Phase 2 | Mastication | 0 | 0 | 0 |
| Tonto | Payson | Payson WUI EA | FY23 Walnut Mastication Maintenance | Mastication | 0 | 0 | 0 |
| Tonto | Payson | Pine Straw WUI | FY24 Pine Fuel Breaks MT | Hand Thinning | 0 | 0 | 0 |
| Tonto | Payson | Rim Country | FY24 Dude Fire Restoration Phase 3 | Mastication | 0 | 0 | 92 |
| Tonto | Payson | Payson WUI EA | FY25 Greater Payson Phase 4 | Mastication | 0 | 0 | 0 |
| ----- | ----- | ----- | ----- | FY25 Tonto Totals: | 0 | 0 | 245 |
| ----- | ----- | ----- | ----- | FY25 4FRI Totals: | 2316 | 59 | 1,648 |

* Workforce refers to projects that will be completed with Forest Service crews, so there will be no contract awarded to a 3rd party.

Table 9. List of planned prescribed burn projects and prescribed fire and managed wildfire implemented by forest in FY25.

| Forest | District | NEPA Document Title | Project Name | Treatment Type | Acres Rx Fire Planned | Acres Implemented |
|-------------------|----------|---------------------|--------------|-------------------|-----------------------|-------------------|
| Apache-Sitgreaves | | Nagel Forest Health | Dutch | Broadcast Burning | 1,301 | 1,301 |

| Forest | District | NEPA Document Title | Project Name | Treatment Type | Acres Rx Fire Planned | Acres Implemented |
|-------------------|---------------|--------------------------------|--------------------------------|-------------------------|-----------------------|-------------------|
| Apache-Sitgreaves | | West Escudilla | Loco Knoll | Broadcast Burning | 0 | 6,695 |
| Apache-Sitgreaves | | | Polishing Ponds 3&4 | Broadcast Burning | 0 | 10 |
| Apache-Sitgreaves | Black Mesa | Larson EA | Point | Broadcast Burning | 814 | 814 |
| Apache-Sitgreaves | Lack Mesa | Rim Lakes EA | Rim Top | Broadcast Burning | 1,286 | 1,286 |
| Apache-Sitgreaves | Lakeside | RCRX | Bear | Broadcast Burning | 973 | 973 |
| Apache-Sitgreaves | | Rodeo Chediski Prescribed Burn | RC East FY25 | Broadcast Burning | 0 | 796 |
| Apache-Sitgreaves | Lakeside | Timber Mesa/Vernon WUI | Doyle | Broadcast Burning | 274 | 274 |
| Apache-Sitgreaves | Lakeside | Timber Mesa/Vernon WUI | Ortega | Broadcast Burning | 1,773 | 1,683 |
| Apache-Sitgreaves | Springerville | Wallow West | Wallow West Unit 6A Phase 1 | Broadcast Burning | 3,951 | 1,680 |
| Apache-Sitgreaves | Alpine | Wallow West | Wallow West Unit 6B, Subunit C | Broadcast Burning | 6,867 | 5,482 |
| Apache-Sitgreaves | Black Mesa | Rim Lakes EA | Sinkhole | Broadcast Burning | 875 | 0 |
| Apache-Sitgreaves | Lakeside | RCRX | 260 | Broadcast Burning | 696 | 0 |
| Apache-Sitgreaves | Lakeside | Los Burros | Brown Creek | Broadcast Burning | 1,725 | 0 |
| Apache-Sitgreaves | Lakeside | Show Low South | Sho Low East | Broadcast Burning | 2,033 | 0 |
| Apache-Sitgreaves | Black Mesa | Rim Country EIS | Brookbank | Broadcast Burning | 3,647 | 0 |
| Apache-Sitgreaves | Clifton | East Eagle/Mud Springs | EEMS Phase 1 Block A | Broadcast Burning | 2,506 | 0 |
| Apache-Sitgreaves | Alpine | West Escudilla | Loco Knoll | Broadcast Burning | 3,300 | 0 |
| Apache-Sitgreaves | Springerville | | Atascacita | Broadcast Burning | 1,662 | 0 |
| Apache-Sitgreaves | | | Blue Fire | Managed Fire | 0 | 51 |
| ----- | ----- | ----- | ----- | FY25 A-S Totals: | 35,000 | 21,045 |
| Coconino | Flagstaff | 4FRI 1st EIS | BAR M, MINT 3 | Broadcast Burning | 964 | 1290 |
| Coconino | Flagstaff | 4FRI 1st EIS | BAR M, MINT 2 | Broadcast Burning | 0 | 1076 |
| Coconino | Flagstaff | 4FRI 1st EIS | BAR M, MINT 1 | Broadcast Burning | 3,461 | 1787 |
| Coconino | Flagstaff | 4FRI 1st EIS | BAR M, MINT West Maint 23 | Broadcast Burning | 1,315 | 1,315 |
| Coconino | Mogollon Rim | Rim Country | BRUI 159 | Broadcast Burning | 0 | 159 |
| Coconino | Mogollon Rim | Rim Country | BRUI 676 | Broadcast Burning | 0 | 676 |
| Coconino | Mogollon Rim | Rim Country | BRUI 517 | Broadcast Burning | 0 | 517 |

| Forest | District | NEPA Document Title | Project Name | Treatment Type | Acres Rx Fire Planned | Acres Implemented |
|----------|--------------|---------------------|-------------------------------|-------------------|-----------------------|-------------------|
| Coconino | Mogollon Rim | Rim Country | BRUI 1029 | Broadcast Burning | 0 | 1029 |
| Coconino | | 4FRI 1st EIS | Crater Sinks 1 | Broadcast Burning | 0 | 370 |
| Coconino | | 4FRI 1st EIS | Crater Sinks 2 | Broadcast Burning | 0 | 335 |
| Coconino | Mogollon Rim | 4FRI 1st EIS | Kendrick 1 | Broadcast Burning | 0 | 220 |
| Coconino | Mogollon Rim | 4FRI 1st EIS | Kendrick 2 | Broadcast Burning | 0 | 493 |
| Coconino | | 4FRI 1st EIS | Upper Beaver Creek DT FY25 | Broadcast Burning | 0 | 510 |
| Coconino | Flagstaff | 4FRI 1st EIS | Snowbowl Rd | Pile Burn | 0 | 94 |
| Coconino | Flagstaff | 4FRI 1st EIS | Walker Hill Demo | Pile Burn | 0 | 270 |
| Coconino | Flagstaff | 4FRI 1st EIS | Willard | Pile Burn | 0 | 992 |
| Coconino | Flagstaff | 4FRI 1st EIS | Woody04 Hand Thin | Pile Burn | 39 | 39 |
| Coconino | Flagstaff | | Brigade Wildfire | Managed Wildfire | 0 | 945 |
| Coconino | Flagstaff | | Tango Wildfire | Managed Wildfire | 0 | 260 |
| Coconino | Mogollon Rim | | West Fire | Managed Wildfire | 0 | 3,587 |
| Coconino | Flagstaff | 4FRI 1st EIS | Bar-M, Mint East 5 | Broadcast Burning | 0 | 0 |
| Coconino | Mogollon Rim | 4FRI 1st EIS | Sawmill | Broadcast Burning | 1600 | 0 |
| Coconino | Flagstaff | 4FRI 1st EIS | Bar-M, Mint West, 4 | Broadcast Burning | 754 | 0 |
| Coconino | Flagstaff | 4FRI 1st EIS | Bar-M, Mint West, 8 | Broadcast Burning | 651 | 0 |
| Coconino | Flagstaff | Woody Ridge | FUI, Arboretum, 4 | Broadcast Burning | 480 | 0 |
| Coconino | Flagstaff | Eastside | FUI, Campbell Mesa, 6 | Broadcast Burning | 533 | 0 |
| Coconino | Flagstaff | Eastside | Timberline, Weatherford, 1 | Broadcast Burning | 0 | 0 |
| Coconino | Flagstaff | Eastside | Timberline, Weatherford, 3 | Broadcast Burning | 397 | 0 |
| Coconino | Flagstaff | Eastside | Timberline, Weatherford, 4 | Broadcast Burning | 714 | 0 |
| Coconino | Flagstaff | 4FRI 1st EIS | West Fork, Crater Sinks, 6 | Broadcast Burning | 381 | 0 |
| Coconino | Flagstaff | 4FRI 1st EIS | West Fork, Crater Sinks, 7 | Broadcast Burning | 413 | 0 |
| Coconino | Flagstaff | 4FRI 1st EIS | West Forks, Crater Sinks, 8 | Broadcast Burning | 0 | 0 |
| Coconino | Flagstaff | Eastside | FUI, Campbell Mesa, 3 | Broadcast Burning | 262 | 0 |
| Coconino | Flagstaff | Eastside | FUI, Campbell Mesa, 4 | Broadcast Burning | 0 | 0 |
| Coconino | Flagstaff | 4FRI 1st EIS | Horseshoe Maxwell Springs, 11 | Broadcast Burning | 354 | 0 |
| Coconino | Flagstaff | 4FRI 1st EIS | Horseshoe Maxwell Springs, 12 | Broadcast Burning | 227 | 0 |
| Coconino | Flagstaff | 4FRI 1st EIS | Horseshoe, Kendrick, 10 | Broadcast Burning | 0 | 0 |
| Coconino | Flagstaff | 4FRI 1st EIS | Horseshoe, Kendrick, 11 | Broadcast Burning | 614 | 0 |
| Coconino | Flagstaff | 4FRI 1st EIS | Horseshoe, Kendrick, 12 | Broadcast Burning | 0 | 0 |

| Forest | District | NEPA Document Title | Project Name | Treatment Type | Acres Rx Fire Planned | Acres Implemented |
|----------|--------------|-----------------------|-------------------------------|------------------------------|-----------------------|-------------------|
| Coconino | Flagstaff | 4FRI 1st EIS | Horseshoe, Kendrick, 14 | Broadcast Burning | 233 | 0 |
| Coconino | Flagstaff | 4FRI 1st EIS | Horseshoe, Maxwell Springs, 2 | Broadcast Burning | 369 | 0 |
| Coconino | Flagstaff | 4FRI 1st EIS | Horseshoe, Maxwell Springs, 9 | Broadcast Burning | 406 | 0 |
| Coconino | Flagstaff | 4FRI 1st EIS | Horseshoe, Peaks, 13 | Broadcast Burning | 523 | 0 |
| Coconino | Mogollon Rim | Clints Well | Clints | Broadcast Burning | 2140 | 0 |
| Coconino | Mogollon Rim | Upper Beaver Creek | Upper Beaver Creek | Broadcast Burning | 6616 | 0 |
| Coconino | Flagstaff | 4FRI 1st EIS | Horseshoe, Maxwell Springs, 8 | Broadcast Burning | 355 | 0 |
| Coconino | Flagstaff | 4FRI 1st EIS | Horseshoe, Peaks, 12 | Broadcast Burning | 0 | 0 |
| Coconino | Mogollon Rim | Rim Country | Victorine | Broadcast Burning | 4650 | 0 |
| Coconino | Red Rock | Upper Beaver Creek EA | Upper Beaver Creek RR 8 | Broadcast Burning | 0 | 0 |
| Coconino | Red Rock | Upper Beaver Creek EA | Upper Beaver Creek RR 10 | Broadcast Burning | 480 | 0 |
| Coconino | Red Rock | Upper Beaver Creek EA | Upper Beaver Creek RR 13 | Broadcast Burning | 411 | 0 |
| Coconino | Red Rock | Upper Beaver Creek EA | Upper Beaver Creek RR 15 | Broadcast Burning | 456 | 0 |
| Coconino | Mogollon Rim | Rim Country | Mogollon Rim Country RX | Broadcast Burning | 7975 | 0 |
| Coconino | Mogollon Rim | Rim Country | Mogollon Rim Country RX | Broadcast Burning | 9375 | 0 |
| Coconino | Mogollon Rim | Rim Country | Cragin Mechanical Piles | Pile Burning | 1,000 | 0 |
| Coconino | Mogollon Rim | Clints Well | Natural Tanks | Pile Burning | 50 | 0 |
| ----- | ----- | ----- | ----- | FY25 Coconino Totals: | 20,000 | 15,964 |
| Kaibab | Tusayan | 4FRI 1st EIS | ANDERSON RX | Broadcast Burning | 1434 | 1434 |
| Kaibab | Williams | 4FRI 1st EIS | CATARACT RX | Broadcast Burning | 551 | 551 |
| Kaibab | Williams | 4FRI 1st EIS | FAY RX FY'25 | Broadcast Burning | 1974 | 1974 |
| Kaibab | Williams | 4FRI 1st EIS | FIRE BALL RX | Broadcast Burning | 1459 | 1459 |
| Kaibab | Williams | 4FRI 1st EIS | FLANIGAN RX | Broadcast Burning | 911 | 911 |
| Kaibab | Williams | 4FRI 1st EIS | HOG RX | Broadcast Burning | 3055 | 3055 |
| Kaibab | Williams | 4FRI 1st EIS | HORSE TRAP/COWBOY | Broadcast Burning | 1573 | 1573 |
| Kaibab | Williams | 4FRI 1st EIS | MOUNTAIN RX | Broadcast Burning | 2128 | 2128 |
| Kaibab | Williams | 4FRI 1st EIS | PANTHER RX | Broadcast Burning | 313 | 313 |
| Kaibab | Williams | 4FRI 1st EIS | PRONGHORN RX | Broadcast Burning | 1057 | 1057 |
| Kaibab | Tusayan | 4FRI 1st EIS | TRANS LINE RX | Broadcast Burning | 752 | 752 |
| Kaibab | Tusayan | 4FRI 1st EIS | WAPATI RX FY'25 | Broadcast Burning | 1988 | 1988 |
| Kaibab | Tusayan | 4FRI 1st EIS | WASH RUSS RX | Broadcast Burning | 2727 | 2727 |
| Kaibab | Williams | 4FRI 1st EIS | WILDCAT RX | Broadcast Burning | 1035 | 1035 |

| Forest | District | NEPA Document Title | Project Name | Treatment Type | Acres Rx Fire Planned | Acres Implemented |
|--------|-----------------|----------------------|--|----------------------------|-----------------------|-------------------|
| Kaibab | Tusayan | Southzone Grasslands | Reed | Pile Burning | 594 | 0 |
| Kaibab | Tusayan | 4FRI 1st EIS | Halfway | Pile Burning | 1422 | 0 |
| Kaibab | Tusayan | 4FRI 1st EIS | Boggy Tank | Pile Burning | 66 | 0 |
| Kaibab | Tusayan | 4FRI 1st EIS | Sanderson South | Pile Burning | 45 | 0 |
| Kaibab | Williams | 4FRI 1st EIS | Junction TS | Pile Burning | 288 | 0 |
| Kaibab | Williams | 4FRI 1st EIS | Beacon | Pile Burning | 99 | 0 |
| Kaibab | Williams | 4FRI 1st EIS | Pup | Pile Burning | 243 | 0 |
| Kaibab | Williams | 4FRI 1st EIS | Clover | Pile Burning | 559 | 0 |
| Kaibab | Williams | 4FRI 1st EIS | Saddle | Pile Burning | 114 | 0 |
| ----- | ----- | ----- | ----- | FY25 Kaibab Totals: | 20,000 | 20,957 |
| Tonto | Payson | Myrtle WUI EA | Diamond Rim RX Phase 1/Tonto Village South | Broadcast Burning | 3,006 | 0 |
| Tonto | Pleasant Valley | Spring CE | West Prong RX | Broadcast Burning | 2,318 | 0 |
| Tonto | Payson | Myrtle WUI EA | Diamond Rim RX Phase 2 | Broadcast Burning | 890 | 0 |
| Tonto | Payson | Verde EA | Whispering Pines Powerlines | Broadcast Burning | 474 | 0 |
| Tonto | Pleasant Valley | Chamberlain EA | 512 Piles | | 139 | 0 |
| Tonto | Pleasant Valley | Spring CE | Buckaroo Flat Piles | Pile Burn | 170 | 0 |
| Tonto | | | West WF | Managed Fire | 0 | 11,486 |
| Tonto | | | Preacher WF | Managed Fire | 0 | 3,167 |
| ----- | ----- | ----- | ----- | FY25 Tonto Totals: | 14,000 | 14,653 |
| ----- | ----- | ----- | ----- | FY23 4FRI Totals: | 100,000 | 72,619 |

Wildfire with Beneficial Effects

Depending on fuels, weather, and other factors, wildfires burn at different levels of severity. In the 4FRI landscape, fires that burn at a lower severity, and in certain geographic areas, can be managed like prescribed burns. The intention of managing these wildfires is to reduce forest fuels and reintroduce natural processes to forest ecosystems. Since the inception of 4FRI, many of these managed wildfires have occurred. Table 9 provides a list of wildfires that have been managed for resource benefits within the 4FRI landscape from 2010 to 2024. This table is updated annually.

Table 10. Total acres of managed wildfire by Forest from 2010 - 2024 within the 4FRI landscape.

| Forest | Date |
|-------------------|----------------|
| Apache-Sitgreaves | 188,196 |
| Coconino | 300,041 |
| Kaibab | 135,976 |
| Tonto | 73,774 |
| Total: | 697,987 |

Roadwork Planned Under 4FRI Restoration Strategy

The 4FRI Restoration Strategy includes a key decision that requires the Forest Service to focus on resolving enabling conditions needed for industry success. These enabling conditions cover a variety of issues, one of which is maintaining roads and bridges used as haul routes to alleviate contractor costs associated with pre-haul maintenance. To address this condition, the Forest Service is improving and maintaining existing roads and bridges used over primary haul routes. Table 10 provides a list of approved road and bridge projects for FY22 through FY25.

Table 11. Planned roadwork associated with the 4FRI Restoration Strategy.

| Fiscal Year | Forest | Road/Pit | Length (miles) | Method | Contractor | Status |
|-------------|----------|---------------------------------|----------------|----------|--|----------|
| FY22 | A-S | NFSR 24 Resurfacing | 16.8 | Contract | Geisler Skidding (~13.2 miles), Perkins Cinders (~3.6 miles) | Complete |
| FY22 | A-S | NFSR 169 Resurfacing | 7 | Contract | Martinez Construction Services | Complete |
| FY22 | A-S | NFSR 249 Resurfacing | 16.5 | Contract | Surface Contracting, Inc. | Complete |
| FY22 | A-S | NFSR 100 Resurfacing | 5 | Contract | Martinez Construction Services | Complete |
| FY22 | A-S | NFSR 26 Resurfacing | 9 | Contract | Perkins Cinders | Complete |
| FY22 | Coconino | Crush/ Stockpile Cinch Hook Pit | N/A | Contract | Schuck Development | Complete |
| FY22 | Coconino | Crush and Stockpile Coyote Pit | N/A | Contract | PG&E | Ongoing |
| FY22 | Coconino | NFSR 300/139 Resurfacing | 8.49 | Contract | AGE General Engineering Co. | Complete |
| FY22 | Coconino | NFSR 141 Resurfacing | 7.98 | Contract | AGE General Engineering Co. | Complete |
| FY22 | Coconino | NFSR 700/91 Resurfacing | 9.2 | Contract | Pima Paving | Complete |
| FY22 | Kaibab | Crush and Stockpile Ruin Pit | N/A | Contract | PG&E | Complete |

| Fiscal Year | Forest | Road/Pit | Length (miles) | Method | Contractor | Status |
|-------------|----------|---|----------------------|-----------------|---|--|
| FY22 | Kaibab | NFSR 105 Resurfacing | 8.22 | Contract | PG&E | Complete |
| FY22 | Kaibab | NRSR 354 Resurfacing | 7.07 | Contract | AGE General Engineering Co. | Complete |
| FY22 | Tonto | NFSR 64 Paving | 1.03 | G&A Gila County | Agreement Executed. Design contract awarded to Woodson Engineering. Construction contract awarded to Perkins Cinders. | Construction is nearly finished. |
| | | | | | | |
| FY23 | A-S | NFSR 300 Repaving | Approx. 9.31 | Contract | Warm Springs Construction Enterprise | Work began the end of May. Contractor has paved ~6 miles of first lift and is prepping the next 3 miles for asphalt. |
| FY23 | A-S | Buffalo Crossing Bridge | N/A | Contract | Monitor Construction Company, Inc. | Contract was nearly completed in June with some punch list items being worked on still. |
| FY23 | Coconino | Crush and Stockpile Curly Pit | N/A | Contract | Kramme Construction, llc | Complete |
| FY23 | Coconino | Crush and Stockpile Snafu Pit | N/A | Contract | DH Ortega | Complete |
| FY23 | Coconino | NFSR 151 Resurfacing | 6.6 | Contract | AGE General Engineering Co. | Complete |
| FY23 | Coconino | NFSR 147, 613, 612 Resurfacing | 7.5 | Contract | PG&E | Complete |
| FY23 | Tonto | Camp Geronimo and Webber Creek Bridge | CG – 18' WC – 85' | Contract | Contract awarded to LAM Industries LLC | Construction started in October, 2024. Due to unfavorable winter weather, construction has stopped and will resume in the springs of 2025. |
| | | | | | | |
| FY24 | A-S | Surface Stabilization | | | | |
| FY24 | A-S | FY24 Paving 300 Rd/ 89 Rd to A-S Boundary | | Contract | | |
| FY24 | Coconino | Resurfacing FSR 141/141H | 6.5 | Contract | Pima Paving | Complete |

| Fiscal Year | Forest | Road/Pit | Length (miles) | Method | Contractor | Status |
|-------------|----------|---|----------------|--|---|--|
| FY24 | Coconino | Resurfacing NFSR 218 | 8.0 | Contract | PG&E | Complete |
| FY24 | Coconino | Crush and Stockpile Curly Pit | N/A | Contract | PG&E | Awarded |
| FY24 | Coconino | NFSR 613 culvert cleaning, repair and replacement | N/A | Contract | Cutting Edge Contractors Inc. | Complete |
| FY24 | Kaibab | Resurfacing FSR 100/171 | 5.5 | Contract | PG&E | Awarded |
| FY24 | Tonto | Workman Creek Road (NFSR 487) Restoration – Phase 1 | 0.1 | Task Order under the National A&E MATOC/IDIQ | Geo-Advantec, Inc. | Project is underway. Geotechnical investigation is scheduled for December 19 and 20, 2024. |
| FY24 | Tonto | AZ NFSR 289 Bridge Replacement | 0.1 | G&A Federal Highway Administration/Central Federal Lands | Jacobs Engineering. | 70% Engineering plans, NEPA, and Heritage are underway. |
| FY24 | Tonto | Pit Expansion Project in Gila County | N/A | G&A Gila County | Agreement Executed. Environmental contract for EA development awarded to Kimley-Horn and Associates | EA Development is underway. Anticipated completion is fall of 2025. |
| | | | | | | |
| FY25 | A-S | Surface Stabilization NFSR 25 | 14 | | | |
| FY25 | A-S | Surface Stabilization NFSR 249E | 5.3 | | | |
| FY25 | A-S | Surface Stabilization NFSR 26 | 9.8 | | | |
| FY25 | Coconino | Resurface NFSR 226 | 6.0 | | | |
| FY25 | Coconino | Resurface NFSR 171 | 6.0 | | | |
| FY25 | Coconino | Perry Pit Crush and Stockpile | N/A | | | |
| FY25 | Kaibab | Resurface NFSR 786/171 | 6.0 | | | |
| FY25 | Kaibab | Resurface NFSR 110 | 6.0 | | | |
| FY25 | Kaibab | Ruin Pit Crush and Stockpile | N/A | | | |
| FY25 | Tonto | Bridge Replacement NFSR 289 | N/A | | | |

Watershed Restoration

Within 4FRI many opportunities exist to improve watershed condition, contribute to species recovery, and increase landscape resiliency by implementing watershed restoration projects in springs, meadows, stream channels, and riparian areas. These projects improve hydrologic function to retain water on landscapes longer, which enhances wet meadows, springs, and riparian vegetation. This work is focused in, (but not limited to) Priority Watersheds, designated by each forest under the National Watershed Condition Framework. Table 12 provides Aquatics and Watershed restoration projects for the next two fiscal years.

Table 12. Aquatic and Watershed restoration projects for fiscal years 2025 and 2026.

| Year Award | Forest | NEPA | Project Name | Units | Activity Type | Status | Partners |
|------------|--------|-------------------|---|-----------|--|---------------------|--|
| 2024 | A-S | Black River EA | Thompson Ranch Stream Restoration | 1 Plan | Stream Restoration Water SMART Design Plan | Completed | TU, CK BluShift USFWS, BOR |
| 2024 | A-S | West Escudilla EA | Beaver Dam Analog & Post Log Jams - Jackson Creek | 2 Acres | Watershed Health, Stream/Wetland Restoration | Completed | |
| 2024 | Kaibab | 4FRI 1st EIS | South Zone Springs Restoration Big Spring | 1 Acres | Spring protection | Completed | AZ Elk Society, Spring Stewardship Institute, AZGF |
| 2024 | Tonto | Rim Country EIS | Dude Creek Restoration Phase II | 0.5 miles | Stream Restoration (headcut) | Completed | AZGF, TU |
| 2025 | A-S | Rim Country EIS | Blue River Stream Guage O & M | 1 Program | Stream gauge operation | | USGS |
| 2025 | A-S | Black River EA | Thompson Ranch Stream Restoration | 1 Plan | Stream Restoration Water SMART Design Plan | Design in Progress | TU, CK BluShift USFWS, BOR |
| 2025 | A-S | West Escudilla EA | Beaver Dam Analog & Post Log Jams - Jackson Creek | 2 Acres | Watershed Health, Stream/Wetland Restoration | Planning | |
| 2025 | A-S | West Escudilla EA | Beaver Dam Analog & Post Assisted Log Jams | 2 Acres | Stream/ Wetland Restoration | | |
| 2025 | A-S | West Escudilla EA | Riparian Planting Program | 2 Acres | Riparian Planting | | |
| 2025 | A-S | Black River | Thompson Ranch Stream Restoration | 2.6 miles | Stream restoration | Implement Fall 2024 | TU, CK BlueShift, USFWS, BOR. |
| 2025 | A-S | Black River | Thompson Ranch Ungulate Exclosure | 130 acres | Riparian Exclosure | Need clearance. | TU, CK BlueShift, USFWS, BOR |

| Year Award | Forest | NEPA | Project Name | Units | Activity Type | Status | Partners |
|------------|--------|--------------------------|--|-----------|--|---|--|
| | | | | | | Partners seeking funding. | |
| 2025 | A-S | Black River | Stinky Creek Fish Barrier Removal | 1 barrier | Fish Barrier Removal | Need Heritage clearance. | AZGF, USFWS |
| 2025 | Coc | Rim Country | Allen Lake Restoration | 30 Acres | Geomorphic regrading of lake surface and possible chemical application to bottom of trenches | Design completed, planning implementation | NFF, AZGF, GCT, AZ Elk Society, BCI, FONAF |
| 2025 | Coc | 4FRI 1st EIS | Scott Spring Restoration | 5 Acres | Exclosure fencing and infrastructure removal | Design and Implementation | NFF, AZGF, GCT, AZ Elk Society, FONAF |
| 2025 | Coc | 4FRI 1st EIS | Ritter Spring Restoration | 5 Acres | Exclosure fencing and infrastructure removal | Design and Implementation | NFF, AZGF, GCT, AZ Elk Society, FONAF |
| 2025 | Coc | 4FRI 1st EIS | Weimer Spring Restoration | 15 Acres | Exclosure fencing and infrastructure removal | Design and Implementation | NFF, AZGF, GCT, AZ Elk Society, FONAF |
| 2025 | Coc | 4FRI 1st EIS | Mint Spring Restoration | 15 Acres | Exclosure, stabilization, and thinning | Design and Implementation | NFF, AZGF, GCT, AZ Elk Society, FONAF |
| 2025 | Coc | 4FRI 1 st EIS | Seven Anchor Spring Restoration | 15 Acres | Exclosure, stabilization, and thinning | Design | NFF, AZGF, GCT, AZ Elk Society, FONAF |
| 2025 | Coc | 4FRI 1st EIS | Hoxworth Restoration | 15 Acres | Meadow stabilization | Planning and Design | NFF, AZGF, GCT, AZ Elk Society, FONAF |
| 2025 | Coc | 4FRI 1 st EIS | Clark Meadow | 15 Acres | Channel and Meadow Restoration | Planning and Design | NFF, AZGF, GCT, AZ Elk Society, FONAF |
| 2025 | Coc | Rim Country EIS | CC Cragin Watershed Restoration and Source Water Protection Plan Development | n/a | WRAP completion | Planning | NFF, AZGF, GCT, AZ Elk Society, FONAF, SRP? City of Payson |

| Year Award | Forest | NEPA | Project Name | Units | Activity Type | Status | Partners |
|------------|--------|-----------------|---|-----------|---|---|--|
| 2025 | Coc | Rim Country EIS | Buck Springs Restoration | 15 Acres | Meadow stabilization, fencing, and willow planting | Implementation and Monitoring | NFF, AZGF, GCT, AZ Elk Society, FONAF |
| 2025 | Coc | Rim Country EIS | Kehl Springs Meadow Restoration Design | 40 Acres | Remove or fix infrastructure, fencing, erosion control structures | Design through agreement with AES, potential phase 1 implementation | NFF, AZGF, GCT, AZ Elk Society, FONAF |
| 2025 | Coc | Rim Country EIS | Houston Draw Restoration | 25 Acres | Continue construction of erosion control structures and riparian planting | Implementation, planting, monitoring | AZ Elk Society primary, NFF, AZGF, FONAF |
| 2025 | Coc | 4FRI EIS | Lake Mary Priority Watershed Restoration Action Plan Development and Project Design | n/a | Planning to prioritize projects for Watershed Restoration Action Plan Development | Planning | NFF, AZGF, GCT, AZ Elk Society |
| 2025 | Coc | 4FRI EIS | Lake Mary Road Restoration project | 100 acres | Planning for unauthorized route decommissioning, road relocation, and road upgrades | Planning | NFF |
| 2025 | Coc | 4FRI 1st EIS | Scott Spring Restoration | 5 Acres | Exclosure fencing and infrastructure removal | Implementation | NFF, AZGF, GCT, AZ Elk Society, FONAF |
| 2025 | Coc | 4FRI 1st EIS | Ritter Spring Restoration | 5 Acres | Exclosure fencing and infrastructure removal | Implementation | NFF, AZGF, GCT, AZ Elk Society, FONAF |
| 2025 | Coc | 4FRI 1st EIS | Weimer Spring Restoration | 15 Acres | Exclosure fencing and infrastructure removal | Implementation | NFF, AZGF, GCT, AZ Elk Society, FONAF |
| 2025 | Coc | 4FRI 1st EIS | Mint Spring Restoration | 15 Acres | Exclosure, stabilization, and thinning | Implementation | NFF, AZGF, GCT, AZ Elk Society, FONAF |

| Year Award | Forest | NEPA | Project Name | Units | Activity Type | Status | Partners |
|------------|--------|--------------------|--|----------|--|--|---|
| 2025 | Coc | 4FRI 1st EIS | Lake Mary Watershed Unauthorized Route Decommissioning | 25 Acres | Unauthorized Route Decommissioning to reduce erosion and sedimentation and improve meadow function | Planning | |
| 2025 | Coc | Rim Country EIS | Houston Draw | 3 Miles | Monitoring, fencing, conifer removal | Implement ation | |
| 2025 | Coc | Rim Country EIS | Barbershop Spring Restoration | 30 Acres | Erosion Control, Regrading, Seeding, Meadow Thinning | Planning | |
| 2025 | Coc | Rim Country EIS | Barbershop Canyon | 4 Miles | Erosion Control, Regrading, Seeding, Meadow Thinning | Need Agreement | |
| 2025 | Coc | Rim Country EIS | East Bear Canyon | 2 Miles | Erosion Control, Regrading, Seeding, Meadow Thinning | Need Agreement | |
| 2025 | Coc | Rim Country EIS | Kehl Springs Meadow Restoration Implementation | 40 Acres | Remove or fix infrastructure, fencing, erosion control structures | Design | NFF, AZGF, GCT, AZ Elk Society, FONAF |
| 2025 | Kaibab | 4FRI 1st EIS | South Zone Springs Restoration Lockett Spring | 1 Acres | Spring protection | Planning Project | Spring Stewardship Institute, Requesting Additional Partners |
| 2025 | Kaibab | 4FRI 1st EIS | South Zone Springs Restoration Campbell Spring | 1 Acres | Spring protection | Planning Project | Spring Stewardship Institute, Requesting Additional Partners |
| 2025 | Kaibab | 4FRI 1st EIS | South Zone Springs Restoration Campbell Spring | 1 Acres | Spring protection | Planning Project | Spring Stewardship Institute, Requesting Additional Partners |
| 2025 | Tonto | Rim Country EIS | Parallel Canyon-Cherry Creek Watershed Spring Restoration | 3 acres | Spring Restoration | In Progress/D esigns complete | AZGF |
| 2025 | Tonto | Rim Country | Chase Creek Restoration Phase 1 | 1 Miles | Riparian Restoration - Himalayan Blackberry Removal | Implement ation 2024 | NFF, AZGF |

| Year Award | Forest | NEPA | Project Name | Units | Activity Type | Status | Partners |
|------------|--------|-------------|--|-----------|----------------------|-----------------------|---|
| 2025 | Tonto | Rim Country | Little Green Valley Wet Meadow Restoration Phase I | 20 Acres | Riparian Restoration | Agreement Review | Northern AZ Forest Fund, NFF, Private Landowner |
| 2025 | Tonto | Rim Country | East Verde River Headwaters and Green Valley Creek | ~30 miles | Road Decommissioning | Implementation 2024 | NFF |
| 2026 | Tonto | Rim Country | Chase Creek Restoration Phase 2 (Habitat enhancement/riparian restoration) | 2 Miles | Riparian Restoration | In-Progress Agreement | NFF, AZGF |
| 2026 | Tonto | Rim Country | Little Green Valley Wet Meadow Restoration Phase II | 20 Acres | Riparian Restoration | Agreement Review | Northern AZ Forest Fund, NFF, Private Landowner |
| 2027 | Tonto | Rim Country | Pieper Hatchery Springs Restoration | 1 acre | Spring Restoration | Under design | AZGF |

* AZGF- Arizona Game and Fish, BCI – Bird Conservancy Institute, BOR – Bureau of Reclamation, FONAF – Friends of Northern Arizona Forest, GCT – Grand Canyon Trust, NFF – National Forest Foundation, TU – Trout Unlimited, USFWS – US Fish and Wildlife Service, USGS – US Geologic Services

Out-year Planning

The 4FRI program manages a 5-year plan for commercial thinning, non-commercial hazardous fuel reduction, and prescribed burning projects across the four forests. The 5-Year Plan allows program managers to schedule required surveys and compliance work before implementation. In addition, the 5-Year Plan helps prioritize areas for treatments and ensures consistent accomplishments. However, due to a host of factors, 5-Year Plans are subject to change and typically do change regularly. Entities outside the Forest Service should not rely on the 5-Year Plan when making a decision that affects their business or organization. In sharing the 5-Year Plan, the Forest Service makes no commitment, expressed or implied, to executing any portion of these plans in part or in whole. For details about specific projects, SHG members are encouraged to contact timber and fuels program managers on individual forests.

Below is a summary of the acres currently planned over the next four years (2026-2029). Year 1 (2023) is already described in previous sections so not included here. This table includes all acres planned for high-priority partner projects and Forests' regular programs of work (POWs). Detailed information about individual projects is provided in Appendix B.

Table 13. Summary of acres planned for commercial thinning over the next 4 years (2026-2029)

| Forest | FY2026 | FY2027 | FY2028 | FY2029 |
|---------------------|---------------|---------------|---------------|---------------|
| Apache - Sitgreaves | 7,833 | 10,107 | 9,280 | 7,642 |
| Coconino | 18,396 | 21,650 | 19,600 | 5,150 |
| Kaibab | 6,544 | 7,114 | 5,400 | 6,000 |
| Tonto | 736 | 2,220 | 1,000 | 1,000 |
| 4FRI Total: | 33,509 | 41,071 | 35,280 | 19,792 |

NEPA Projects in Progress Across 4FRI

Table 142. NEPA Projects in Progress Across 4FRI

| Forest (s) | Project Name | Purpose | Current NEPA Status | Expected Decision Date | Expected Implementation |
|----------------------|---|---|-------------------------------|-------------------------------|-------------------------|
| A-S, Coconino, Tonto | Four Forest Restoration Initiative Rim Country Environmental Impact Statement EIS | Forest Restoration | ROD Signed September 19, 2022 | ROD Signed September 19, 2022 | Post-decision |
| A-S | Round Valley Firescape | Forest Restoration | Developing project | 2024 | 2025 |
| A-S | Heber Allotment Analysis | Grazing and Grassland Restoration (woodland treatments) | Analysis Completed | 11/09/2020 | Post-decision |

| Forest (s) | Project Name | Purpose | Current NEPA Status | Expected Decision Date | Expected Implementation |
|------------|--|---|---|------------------------|-------------------------|
| A-S | Apache-Sitgreaves National Forest TMR | Road Management and Recreation Management | Under Analysis | est. FY24 | Post-decision |
| A-S | Black River Restoration | Forest Restoration | Analysis Completed | 8/25/2023 | 2024 |
| A-S | Oky Flat Insect and Disease Treatment CE | Fuels Reduction/Insect & Disease | Analysis Completed | 2/14/2020 | 2021 |
| A-S | Nutriosio WUI - Section 18/SIR | Fuels Management | Analysis Completed | 8/16/2022 | 2023 |
| A-S | Pierce Wash Allotment-Section 18 Analysis of Vegetation Treatments | Grassland Restoration | Review of effects analysis and previous NEPA | 2024 | Post-Decision |
| Coconino | Mogollon Rim Oystershell Scale Mitigation Trial | Aspen Restoration | Decision signed on 4/24/2024 | 2024 | 2024 |
| Coconino | Forest Grassland Restoration Project | Grassland Restoration | Developing proposed treatments. Scoping planned for end of January 2025. | 2026 | 2026 |
| Coconino | Leroux Fuels Management Project | Wildfire Risk Reduction | Scoping started on May 14 th . There are current considerations of re-structuring the project in 2025. | n/a | 2026 |
| Coconino | Long Valley Wildfire Risk Reduction | Wildfire Risk Reduction | Developing project. All on Long Valley Experimental Forest. Scoping ended at the end of July. Currently waiting for biological consultation for decision. | 2025 | 2025 |
| Tonto | Material Pit Development | Engineering | Gila County Material Pits EA | Project Development | 2025 |

APPENDIX A - Completed Commercial Thinning Contracts

This table report commercial thinning contracts that have been completed since the first of these monthly updates was published in August of 2014. The table does not display what has been completed since the start of the Initiative in 2010. Cut complete and closed are sales that have had all the work completed on the ground, as well as a final contract review. Cut complete are sales that have been cut out and have not had the final acceptance on some portion of the contract. Sales that have defaulted are also included in the table. Partially cut Task Orders that were part of the Phase 1 Contract have not been included in the table at this time.

Table 15. Completed Commercial Thinning Contracts and Acres since August 2014.

| Fiscal Year Closed | Forest | Awarded Sale Name | Acres | Status | Awarded To |
|--------------------|--------|-------------------------------|-------|-----------------------|--|
| | A-S | Woolhouse (phase 1) | 2,500 | Cut complete & closed | Tri Star Logging |
| | A-S | San Juan Road hazards salvage | 291 | Cut complete & closed | Reidhead Bros Lumber mill |
| FY15 | A-S | Nutri 1B Blowdown Salvage | 30 | Cut complete & closed | Reidhead Bros Lumber mill |
| FY15 | A-S | Mineral C Whiting | 1,244 | Cut complete & closed | Novo Power |
| FY15 | A-S | Mineral C Thompson | 4,450 | Cut complete & closed | Novo Power |
| FY15 | A-S | Chitty Blowdown Salvage | 183 | Cut complete & closed | Reidhead Bros Lumber mill |
| FY15 | A-S | Benny Stewardship | 245 | Cut complete & closed | Vaagan Brothers |
| FY15 | A-S | Phase 1 – Ranch | 932 | Cut Complete & Closed | New Life Forest Products |
| FY16 | A-S | Sinkhole | 825 | Cut complete & closed | Tri Star Logging |
| FY16 | A-S | Wallow West Unit 27 | 431 | Cut complete & closed | Forest Energy Corp. |
| FY16 | A-S | Mud Springs | 1,018 | Cut complete & closed | Tri Star Logging |
| FY17 | A-S | Show Low South | 3,454 | Cut complete & closed | Tri Star Logging |
| | A-S | Dipping Vat | 1,691 | Cut complete & closed | WW Cattleguards |
| FY17 | A-S | Burro Stewardship Agreement | 845 | Cut complete & closed | Navajo Co –Eastern Arizona Co—awarded to Forest Energy |
| | A-S | Phoenix Park Re-Offer | 1,517 | Cut complete & closed | Novo Power |
| | A-S | URA 1 – Telephone | 1,526 | Cut Complete | Tri Star Logging |
| FY18 | A-S | Crook | 1,997 | Cut complete & closed | Tri Star Logging |
| FY18 | A-S | Zrama | 1,346 | Cut complete & closed | Tri Star Logging |
| FY18 | A-S | Bear | 1,548 | Cut complete & closed | Tri Star Logging |
| FY18 | A-S | Hulsey Bench | 748 | Cut complete & closed | Reidhead Brothers |
| FY18 | A-S | Phase 1 – West Fork | 1,482 | Cut Complete & Closed | New Life Forest Products |
| | A-S | Larson – Woods | 2,065 | Cut Complete | Tri Star Logging |

| Fiscal Year Closed | Forest | Awarded Sale Name | Acres | Status | Awarded To |
|---------------------------|---------------|-----------------------------|--------------|-----------------------|------------------------------|
| | A-S | Timber Knoll | 150 | Cut complete & closed | WW Cattleguards |
| | A-S | Oil Well | 1,028 | Cut Complete | Gibson and Son Road Building |
| FY19 | A-S | WE-Little TS | 1,392 | Cut Complete & closed | Timber Tramp Logging |
| FY19 | A-S | Long Hollow | 623 | Cut complete & closed | Tri Star Logging |
| FY19 | A-S | Jack Rabbitt | 461 | Cut complete & closed | Tri Star Logging |
| FY19 | A-S | First Knoll A | 1,420 | Cut complete & closed | Tri Star Logging |
| FY19 | A-S | Rim Top | 1,191 | Cut complete & closed | Tri Star Logging |
| FY21 | A-S | Park Day – Scott | 422 | Cut complete & closed | Novo Biopower |
| FY21 | A-S | Dry | 266 | Cut Complete & closed | Tri Star Logging |
| FY21 | A-S | Pace Creek (West Escudilla) | 2,074 | Cut Complete & closed | Timber Tramp Logging |
| FY22 | A-S | URA – Mortimer | 2,137 | Cut Complete & closed | Tri Star Logging |
| FY22 | A-S | URA – Turkey | 2,060 | Cut Complete & closed | Simpson Contract Cutting |
| FY22 | A-S | URA – Cabin | 1,191 | Cut Complete & closed | Gibson and Son Road Building |
| FY22 | A-S | Point | 2,811 | Cut complete & closed | Tri Star Logging |
| FY22 | A-S | Fulton | 1,818 | Cut Complete & closed | Forest Energy |
| FY22 | A-S | Apprentice | 2,010 | Cut Complete & closed | Tri Star Logging |
| FY22 | A-S | URA – Flemming | 1,549 | Cut Complete & closed | Canyon Creek Logging Inc. |
| FY22 | A-S | WE - Loco | 1,847 | Cut Complete & closed | Timber Tramp Logging |
| FY22 | A-S | Mesa | 2,551 | Cut Complete & closed | Tri Star Logging |
| FY22 | A-S | Carr Lake | 1,605 | Cut complete & closed | Tri Star Logging |
| FY22 | A-S | SW Bagnal PJ | 634 | Cut Complete & closed | Gibson and Son Road Building |
| FY22 | A-S | WE – Tenny Pond | 679 | Cut complete & closed | Simpson Logging |
| FY23 | A-S | Luna Tank | 1,316 | Cut Complete | Luna Tank |
| FY23 | A-S | Larson – St. Joe | 2,190 | Cut Complete & Closed | Canyon Creek Logging Inc. |
| FY23 | A-S | Park PJ | 686 | Cut Complete & Closed | Canyon Creek Logging Inc. |
| FY23 | A-S | Los Burros Two | 966 | Cut Complete & closed | Simpson Logging |
| FY23 | A-S | Milligan Valley | 754 | Cut Complete & Closed | Tri Star Logging |
| FY23 | A-S | Phase 1 - Rim Lakes-Willow | 658 | Cut Complete & Closed | NLFP |
| FY23 | A-S | Exchange Tank | 448 | Cut Complete & Closed | Tall Timber Logging, LLC |

| Fiscal Year Closed | Forest | Awarded Sale Name | Acres | Status | Awarded To |
|---------------------------|---------------|--------------------------|--------------|---|----------------------------|
| FY23 | A-S | Windmill PJ | 1,062 | Cut Complete & Closed | Chippin-in, LLC |
| FY23 | A-S | Phase 1 – Alder | 995 | Cut Complete & Closed | NLFP |
| FY24 | A-S | Hidden | 2,605 | Cut Complete & Closed | Tri Star Logging |
| FY24 | A-S | URA Gobbler | 1,318 | Cut Complete & Closed | Forest Energy |
| FY24 | A-S | Nappa | 1,365 | Cut Complete & Closed | Tri Star Logging |
| | A-S | Billy Mountain | 3,268 | Cut Complete | WW Cattleguards |
| | A-S | Halter | 906 | Cut Complete | Canyon Creek Logging |
| | A-S | Chipumnk | 1,770 | Cut Complete | Canyon Creek Logging |
| | A-S | Springs Stew. Reoffer | 1,042 | Cut Complete | Canyon Creek Logging |
| | A-S | Sandstone | 2,883 | Cut Complete | Tri Star Logging |
| | A-S | Slim Stew Re-Offer | 1,990 | Cut Complete | Tri Star Logging |
| FY15 | Coconino | Woody 05 | 3,309 | Cut complete & closed | Southwest Forest Products |
| FY17 | Coconino | Mr Jones | 611 | Cut complete & closed | Jay Beecroft |
| FY17 | Coconino | FH-3 Right-of-Way | 576 | Cut complete & closed | ADOT |
| FY17 | Coconino | Phase 1 - Weatherford | 944 | Cut completed & closed | New Life Forest Products |
| FY18 | Coconino | Howard | 2,208 | Cut complete & closed | Southwest Forest Products |
| | Coconino | Elden Base Re-offer | 620 | Cut completed & closed | Dakota Logging |
| | Coconino | Walker Hill Demo | 410 | Cut Complete | TNC – Suarez Logging |
| | Coconino | Bonita | 718 | Cut Complete | National Forest Foundation |
| | Coconino | Dry Lake Hills | 391 | Cut Complete | Markit! Forestry |
| | Coconino | Mayflower | 275 | Cut Complete | National Forest Foundation |
| FY19 | Coconino | Railroad | 204 | Cut completed & closed | White Mountain Timber |
| FY19 | Coconino | Elden Base | 500 | 20 acres cut and contract has defaulted | Terry Hatmaker |
| FY19 | Coconino | Saginaw 2 | 1,102 | 809 acres cut completed & closed, 293 acres defaulted | Southwest Forest products |
| FY19 | Coconino | Tule 3 | 954 | Cut completed & closed | Southwest Forest Products |
| FY20 | Coconino | Phase 1 - Schoolhouse | 2,567 | Cut completed & closed | New Life Forest Products |
| FY20 | Coconino | Windmill | 1,339 | Cut complete & closed | Dakota Logging |

| Fiscal Year Closed | Forest | Awarded Sale Name | Acres | Status | Awarded To |
|---------------------------|---------------|--------------------------|--------------|--|-----------------------------|
| FY21 | Coconino | Chimney Springs | 1,409 | Cut completed & closed | The Nature Conservancy |
| FY21 | Coconino | Saginaw 3 Reoffer | 324 | Cut completed & closed | Dakota Logging |
| FY22 | Coconino | Phase 1 - Clark | 1,110 | Cut Complete & Closed | NLFP |
| FY22 | Coconino | Phase 1 - Elk Park | 1,231 | Cut Complete & Closed | NLFP |
| FY22 | Coconino | Phase 1 - Orion | 319 | Cut Complete & Closed | NLFP |
| FY24 | Coconino | Elk Clark | 730 | Cut Complete & Closed | Restoration Forest Products |
| FY24 | Coconino | Baker | 1,010 | Cut complete | AZDFFM |
| | Kaibab | Parks West SPA | 4,270 | Cut Complete | The Nature Conservancy |
| FY15 | Kaibab | Moose Stewardship | 1,200 | Cut completed & closed | James Perkins |
| FY16 | Kaibab | Wright Hill TS | 760 | Cut completed & closed | High Desert Investment |
| FY18 | Kaibab | Shiner | 1,108 | Cut completed & closed | Newpac Fibre |
| FY18 | Kaibab | Round Mountain East | 839 | 177 acres cut and 662 acres defaulted on | New Pac Fibre |
| FY18 | Kaibab | Phase 1 – KA | 1,046 | Cut completed & closed | New Life Forest Products |
| FY18 | Kaibab | Phase 1 – Pomeroy | 1,646 | Cut completed & closed | New Life Forest Products |
| FY19 | Kaibab | Perro | 204 | Cut completed & closed | Bob Lee and Sons |
| FY20 | Kaibab | Phase 1 – Community Tank | 1,039 | Cut completed & closed | New Life Forest Products |
| FY22 | Kaibab | Saddle | 1,106 | Cut Complete & closed | Bob Lee and Sons |
| FY22 | Kaibab | Pup | 916 | Cut completed & closed | Bob Lee & Sons |
| FY23 | Kaibab | Phase 1 - McCracken | 711 | Cut Complete & Closed | NLFP |
| FY23 | Kaibab | Clover | 2,496 | Cut Complete | The Nature Conservancy |
| FY23 | Kaibab | Isham Springs | 594 | Cut completed & closed | Bob Lee & Sons |
| | Kaibab | Cougar Park | 1,342 | Cut completed | Bob Lee & Sons |
| | Kaibab | Holden | 1,365 | Cut Complete | Perkins Timber Harvesting |

| Fiscal Year Closed | Forest | Awarded Sale Name | Acres | Status | Awarded To |
|---------------------------|---------------|-------------------------------------|----------------|------------------------|-----------------------------|
| | Kaibab | Government Prairie | 1,366 | Cut Complete | Restoration Forest Products |
| | Tonto | Shoofly Juniper Thinning | 300 | Cut completed & closed | Tri Star Logging |
| FY15 | Tonto | Cave | 505 | Cut completed & closed | Tri Star Logging |
| FY17 | Tonto | Sheep Springs | 1,147 | Cut completed & closed | Tri Star Logging |
| FY18 | Tonto | Laramie | 463 | Cut completed & closed | Tri Star Logging |
| FY18 | Tonto | Leo Grove | 621 | Cut completed & closed | Tri Star Logging |
| FY21 | Tonto | Angel Rim | 462 | Cut complete & closed | Tri Star Logging |
| FY22 | Tonto | Michellison | 444 | Cut complete & closed | Tri Star Logging |
| FY23 | Tonto | Phase 1 - Christopher/Hunter-Mercer | 544 | Cut complete & Closed | NLFP |
| FY23 | Tonto | Phase 1 - Woodchuck | 465 | Cut Complete & Closed | NLFP |
| FY24 | Tonto | Poco Pino | 718 | Cut Complete | Suarez Forestry |
| | | Total | 136,037 | | |

APPENDIX B – Out Year Projects

Appendix B provides detailed information on 4FRI's 5-Year Program of work for our High Priority Partner and Commercial Thinning projects. High Priority Partner Projects are summarized in Table 14, which includes expected offerings and acres by fiscal year from 2026 through 2029. Commercial thinning projects are summarized in Table 16, which does include High Priority Partnership Projects with commercial timber removal, to provide a complete picture of all commercial projects by Forest and fiscal year. As mentioned earlier, due to a host of factors, 5-Year Plans are subject to change and typically do change regularly. Entities outside the Forest Service should not rely on the 5-Year Plan when making a decision that affects their business or organization. In sharing the 5-Year Plan, the Forest Service makes no commitment, expressed or implied, to executing any portion of these plans in part or in whole. For details about specific projects, SHG members are encouraged to contact timber and fuels program managers on individual forests.

Below is a summary of the acres currently planned over the next four years (2026-2029). Year 1 (2025) is already described in previous sections so not included here. This table includes all acres planned for high-priority partner projects and Forests' regular programs of work (POWs).

Table 16. Outyear Projects (FY26-FY29), acres, and estimated volume (CCF) for High Priority Partner Projects

| Fiscal Year | FOREST | DISTRICT | Project or Sale Name | High Priority Partner Project | Treatment Method | Approximate Acres | Approximate Volume (CCF) |
|-------------------|-----------------------|--------------|------------------------|-----------------------------------|------------------|-------------------|--------------------------|
| 2026 | Coconino | Flagstaff | Howard Pocket | | Commercial Thin | 2,436 | 19,250 |
| | Coconino | Mogollon Rim | Little Bee | | Commercial Thin | 1,100 | 13,200 |
| | Coconino | | Stoneman | | Commercial Thin | 1,700 | 9,000 |
| | Coconino Total | | | | | 5,236 | 41,450 |
| | Kaibab | Williams | Devil IRSC | Bill Williams Restoration Project | Commercial Thin | 391 | 2,693 |
| | Kaibab | Williams | Steep Slope IRSC II | Bill Williams Restoration Project | Mechanical Thin | 340 | 0 |
| | Kaibab Total | | | | | 731 | 2,693 |
| | Tonto | Payson | Greater Payson Phase 4 | Greater Payson DFFM | Mastication | 2,768 | 0 |
| | Tonto Total | | | | | 2,768 | 0 |
| 2026 Total | | | | | | 10,149 | 46,843 |
| 2027 | A-S | Alpine | Hore Creek GNA | Black River | Commercial Thin | 1,615 | 8,075 |
| | A-S Total | | | | | 1,615 | 8,075 |

| | | | | | | | |
|--------------------|-----------------------|--------------|------------------------------------|--|-----------------|---------------|----------------|
| | Coconino | Mogollon Rim | CWPP – Milk Ranch | CC Cragin Watershed Protection Project | Commercial Thin | 3,500 | 21,000 |
| | Coconino Total | | | | | 3,500 | 21,000 |
| | Tonto | Payson | Greater Payson Phase 4 mastication | Greater Payson DFFM | Mastication | 2,768 | 0 |
| | Tonto Total | | | | | 2,768 | 0 |
| 2027 Total | | | | | | 6,268 | 21,000 |
| 2028 | Coconino | Mogollon Rim | CWPP – Moqui | CC Cragin Watershed Protection Project | Commercial Thin | 5,000 | 30,000 |
| | Coconino | Flagstaff | FWPP – Paired Watershed | Flagstaff Watershed | Commercial Thin | 2,500 | 22,500 |
| | Coconino Total | | | | | 7,500 | 52,500 |
| | Tonto | Payson | Greater Payson Phase 5 Mastication | Greater Payson DFFM | Mastication | 1,406 | 0 |
| | Tonto Total | | | | | 1,406 | 0 |
| 2028 Total | | | | | | 8,906 | 47,500 |
| 2029 | A-S | Alpine | PS Knoll GNA | Black River | Commercial Thin | 1,270 | 6,350 |
| | A-S Total | | | | | 1,270 | 6,350 |
| 2029 Total | | | | | | 1,270 | 6,350 |
| Grand Total | | | | | | 26,593 | 121,693 |

Table 17. Outyear Projects (FY26-FY29) for all commercial thinning projects by Forest and fiscal year.

| Award/ Accomplish Year | FOREST | DISTRICT | Activity Name | High Priority Partner Project | Acres | Volume CCF |
|------------------------------|--------------------------------|-----------------|------------------------|--------------------------------|---------------|----------------|
| 2026 | Apache-Sitgreaves | Alpine | BR – Bardman | | 3,305 | 16,525 |
| | Apache-Sitgreaves | Black Mesa | Wildcat DXP | | 1,409 | 11,000 |
| | Apache-Sitgreaves | Black Mesa | Baca DXP | | 2,149 | 9,670 |
| | Apache-Sitgreaves | Black Mesa | Brown Creek Biomass | | 700 | 2,100 |
| | Apache-Sitgreaves Total | | | | 7,833 | 39,295 |
| | Coconino | Flagstaff | Coulter Park | | 1,021 | 7,500 |
| | Coconino | Flagstaff | Telephone Tank | | 2,791 | 16,878 |
| | Coconino | Flagstaff | Howard Pocket | | 2,436 | 19,250 |
| | Coconino | Flagstaff | Little Bee | | 1,100 | 13,200 |
| | Coconino | Flagstaff | Harding Point | | 1,084 | 11,250 |
| | Coconino | Mogollon Rim | CWPP – Windfall | CC Cragin | 2,400 | 14,400 |
| | Coconino | Mogollon Rim | Stoneman | | 1,700 | 9,000 |
| | Coconino | Mogollon Rim | Leroux | | 1,614 | 9,684 |
| | Coconino | Flagstaff | FWPP Malpai | Flagstaff Watershed Protection | 4,250 | 29,750 |
| | Coconino Total | | | | 18,396 | 130,912 |
| | Kaibab | Williams | Tri Tank | | 1,773 | 13,910 |
| | Kaibab | Williams | Newman Hill | | 1,000 | 7,000 |
| | Kaibab | Williams | Mortiz Ridge | | 1,444 | 11,445 |
| | Kaibab | Williams | Zero | | 1,856 | 9,620 |
| | Kaibab | Williams | East X | | 1,171 | 1,950 |
| | Kaibab Total | | | | 6,544 | 43,925 |
| | Tonto | Pleasant Valley | Salty Henn | | 736 | 8,644 |
| | Tonto Total | | | | 736 | 8,644 |
| 2026 Total | | | | | 33,509 | 222,776 |
| 2027 | Apache-Sitgreaves | Alpine | BR – Horse Creek | | 1,615 | 8,075 |
| | Apache-Sitgreaves | Alpine | BR - Heifer | | 3,012 | 15,060 |
| | Apache-Sitgreaves | Black Mesa | Knoll Stewardship IRSC | | 1,700 | 9,350 |
| | Apache-Sitgreaves | Black Mesa | Flat Draw Biomass | | 1,100 | 2,750 |
| | Apache-Sitgreaves | Lakeside | McCleve | | 1,100 | 6,050 |
| | Apache-Sitgreaves | Black Mesa | BR-Brentwood | | 1,580 | 7,900 |

| | | | | | | |
|-------------------|--------------------------------|-----------------|-------------------------|--------------------------------|---------------|----------------|
| | Apache-Sitgreaves Total | | | | 10,107 | 49,185 |
| | Coconino | Flagstaff | West Fork | | 2,128 | 23,408 |
| | Coconino | Flagstaff | Orion | | 572 | 4,500 |
| | Coconino | Flagstaff | Bellemont | | 2,500 | 21,250 |
| | Coconino | Flagstaff | Smith Butte | | 2,500 | 26,250 |
| | Coconino | Mogollon Rim | CWPP – Milk Ranch | CC Cragin | 3,500 | 21,000 |
| | Coconino | Flagstaff | Ritter | | 2,000 | 12,000 |
| | Coconino | Flagstaff | Hidden Hollow | | 2,250 | 16,875 |
| | Coconino | Mogollon Rim | 5 Mile | | 2,500 | 15,000 |
| | Coconino | Flagstaff | Pinegrove | | 2,700 | 20,250 |
| | Coconino | Flagstaff | EC Park | | 1,000 | 7,500 |
| | Coconino Total | | | | 21,650 | 168,033 |
| | Kaibab | Williams | Antelope Hills | | 1,500 | 10,500 |
| | Kaibab | Williams | Sitgreaves Chip | | 1,543 | 1,543 |
| | Kaibab | Williams | Beale Beowolf | | 1,700 | 11,900 |
| | Kaibab | Williams | Beale Central | | 1,600 | 11,200 |
| | Kaibab | Williams | South Parks | | 771 | 6,767 |
| | Kaibab Total | | | | 7,114 | 41,910 |
| | Tonto | Pleasant Valley | Honey | | 1,200 | 9,000 |
| | Tonto | Payson | Shadow Man | | 1,000 | 5,000 |
| | Tonto Total | | | | 2,200 | 14,000 |
| 2027 Total | | | | | 41,071 | 273,128 |
| 2028 | Apache-Sitgreaves | Alpine | Hess Dxp | | 1,463 | 5,852 |
| | Apache-Sitgreaves | Alpine | Dutch Biomass | | 885 | 2,655 |
| | Apache-Sitgreaves | Black Mesa | Wildcat | | 1,731 | 8,655 |
| | Apache-Sitgreaves | Black Mesa | Coyote Sink | | 2,101 | 10,505 |
| | Apache-Sitgreaves | Black Mesa | Section 33 Biomass | | 1,200 | 3,000 |
| | Apache-Sitgreaves | Lakeside | Lons Canyon | | 1,900 | 10,450 |
| | Apache-Sitgreaves Total | | | | 9,280 | 41,117 |
| | Coconino | Flagstaff | FWPP – Paired Watershed | Flagstaff Watershed Protection | 2,500 | 22,500 |
| | Coconino | Flagstaff | Mule Park | | 2,000 | 12,000 |
| | Coconino | Mogollon Rim | CWPP - Moqui | CC Cragin | 5,000 | 30,000 |
| | Coconino | Mogollon Rim | Wild Bill | | 3,800 | 41,800 |
| | | | Little Horse Park | | 3,500 | 31,500 |

| | | | | | | |
|-------------------|--------------------------------|-----------------|-------------------|--|---------------|----------------|
| | | | Ritter | | 2,800 | 22,400 |
| | Coconino Total | | | | 19,600 | 160,200 |
| | Kaibab | Williams | Beale Obsidian | | 1,600 | 11,200 |
| | Kaibab | Williams | The Knolls | | 2,300 | 11,914 |
| | Kaibab | Williams | Three Sisters | | 1,500 | 7,770 |
| | Kaibab Total | | | | 5,400 | 30,884 |
| | Tonto | Payson | Chili Verde | | 1,000 | 5,000 |
| | Tonto Total | | | | 1,000 | 5,000 |
| 2028 Total | | | | | 35,280 | 237,201 |
| 2029 | Apache-Sitgreaves | Alpine | BR – PS Knoll GNA | | 1,270 | 6,350 |
| | Apache-Sitgreaves | Alpine | BR – Boggy | | 2,247 | 11,235 |
| | Apache-Sitgreaves | Black Mesa | Lincoln DxP | | 1,530 | 5,000 |
| | Apache-Sitgreaves | Black Mesa | Pig Pen Biomass | | 1,100 | 2,750 |
| | Apache-Sitgreaves | Alpine | BR - Odart | | 1,495 | 7,475 |
| | Apache-Sitgreaves Total | | | | 7,642 | 32,810 |
| | Coconino | Flagstaff | Crazy Park | | 2,750 | 22,000 |
| | Coconino | Flagstaff | Lagunitas | | 2,400 | 19,200 |
| | Coconino Total | | | | 5,150 | 41,200 |
| | Kaibab | Williams | Lower Sycamore 1 | | 2,000 | 8,000 |
| | Kaibab | Williams | Lower Sycamore 2 | | 2,000 | 8,000 |
| | Kaibab | Williams | Lower Sycamore 3 | | 2,000 | 8,000 |
| | Kaibab Total | | | | 6,000 | 24,000 |
| | Tonto | Pleasant Valley | Whiskey Bottle | | 1,000 | 11,000 |
| | Tonto Total | | | | 1,000 | 11,000 |
| 2029 Total | | | | | 19,792 | 109,010 |

APPENDIX C - DEFINITIONS

4FRI Restoration Strategy – A document that was approved on November 9th, 2021, that outlines strategic goals, accomplishments, and expected outcomes for the 4FRI program.

4FRI Stakeholder Group – Informal organization open to public membership focused on landscape-scale restoration in northern Arizona. [4FRI Home Page - 4FRI Home](#)

5-Year Plan – A tool used by timber and fuels program managers to track outyear planned projects, typically for a minimum of 5 years. The tool helps track prep and survey work that is required prior to contract development and ensures a sustainable flow of acres and volume offered to industry on an annual basis.

Acres Awarded – The number of acres that are awarded under a commercial thinning or non-commercial hazardous fuels contract. Contract types and treatment methods vary depending on site conditions and project objectives.

Acres Prepped – The number of acres that have had all the preparation work completed prior to placing in a commercial thinning or non-commercial hazardous fuels reduction contract. Preparation work typically includes survey work for wildlife, aquatics, heritage resources, botany, or other sensitive resources, flagging, paining, and surveying unit boundaries, conducting cadastral surveys, collecting and processing cruise samples to determine sale volume and tree size classes, writing silvicultural prescriptions and marking guides, and all other associated work needed prior to contract award.

Acres Completed – The acres of awarded contracts that have had all commercial thinning or non-commercial hazardous fuels reduction completed. The term “completed” typically refers to the thinning requirements of a contract, but can also include all closeout work, such as slash treatment, ripping and seeding of compacted areas, and closure of roads that may be required prior to closing out a contract. In some instances, completed work is conducted with Forest Service crews so is not tied to a contract.

Commercial Thinning – Thinning and removal of merchantable sized trees (typically ≥ 5 " DBH) typically using conventional ground-based machinery to meet resource objectives. Conventional ground-based equipment usually includes fellers, skidders, de-limbers, and log trucks, but may also include forwarders, fellers with processing heads, grinders, chip vans, or a variety of other equipment. Commercial thinning could also be completed using cable or helicopter systems, but this isn't common in the southwest. Commercial thinning is accomplished using commercial timber sales, stewardship contracts, or agreements.

Non – Commercial Hazardous Fuel Reduction – Thinning or mastication of non-merchantable sized trees (typically < 5 " DBH) or shrubs. For thinning prescriptions, material is typically treated on-site using slash piles, or lopping and scattering material, which is later treated with broadcast burning. This work is often completed with chainsaw crews or with masticators. Non-commercial hazardous fuels reduction is typically accomplished with service contracts or with Forest Service crews.

High Priority Partner Project – A category of projects described in the 4FRI Restoration Strategy that are designed to significantly reduce the risk of catastrophic wildfire through partnerships with external agencies, groups, or organizations.

Prescribed Fire – A wildland fire originating from a planned ignition to meet specific objectives identified in a written and approved prescribed fire plan for which NEPA requirements (where applicable) have been met prior to ignition.

Timber Contract – Contracts used for the sale of timber products. The Forest Service sells timber and special forest products on a variety of contract and permit forms based on the complexity and/or value of the sale.

Wildfire – An unplanned ignition of a wildland fire, such as a fire caused by lightning, unauthorized or accidental human-caused fires, or an escaped prescribed fire.