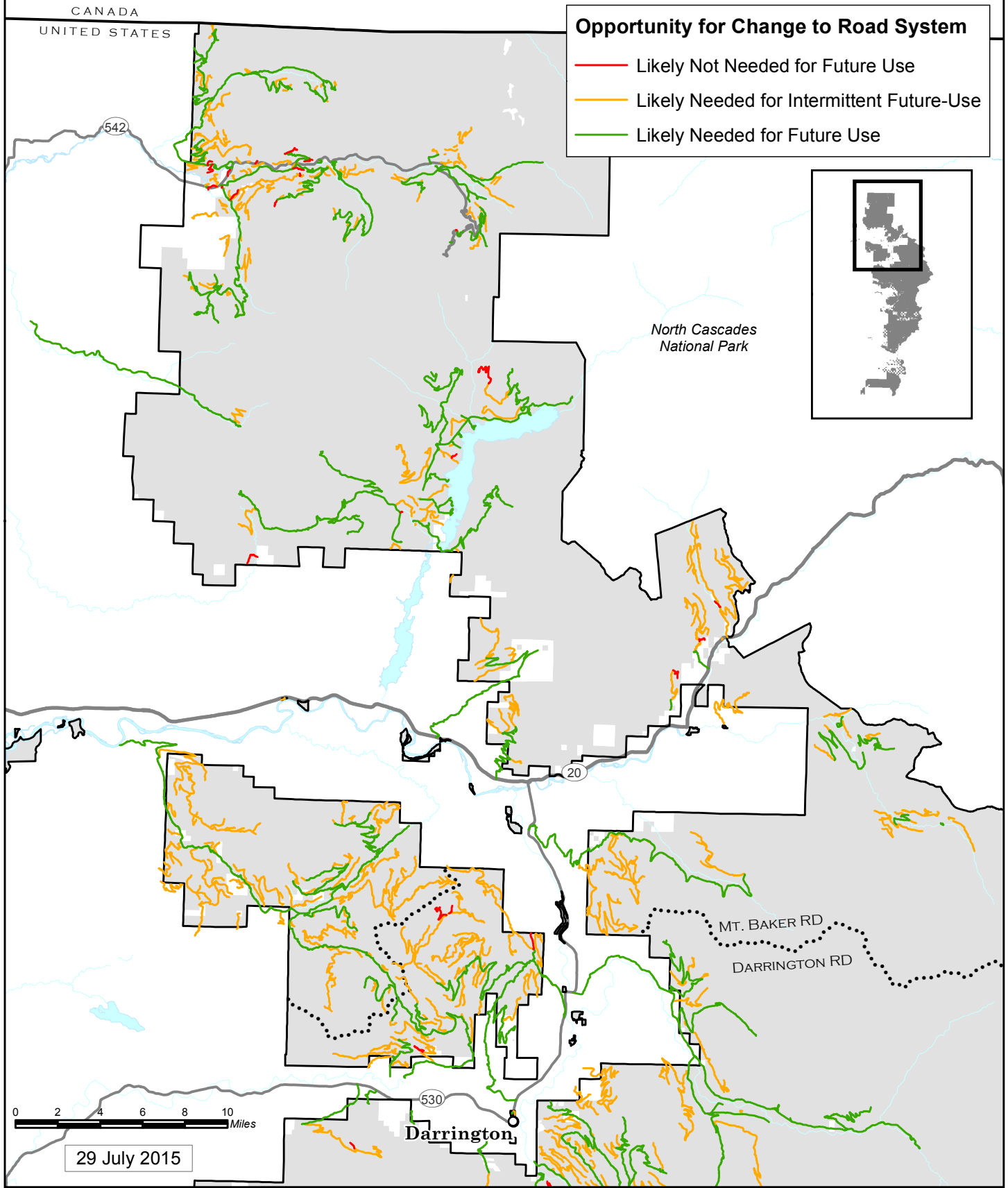
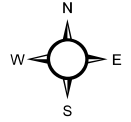
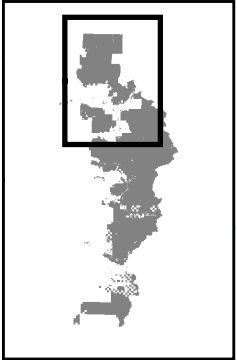


# Mt. Baker Ranger District Mt. Baker-Snoqualmie National Forest Road Risk/Benefit Assessment



**Opportunity for Change to Road System**

- Likely Not Needed for Future Use
- Likely Needed for Intermittent Future-Use
- Likely Needed for Future Use



0 2 4 6 8 10 Miles

29 July 2015