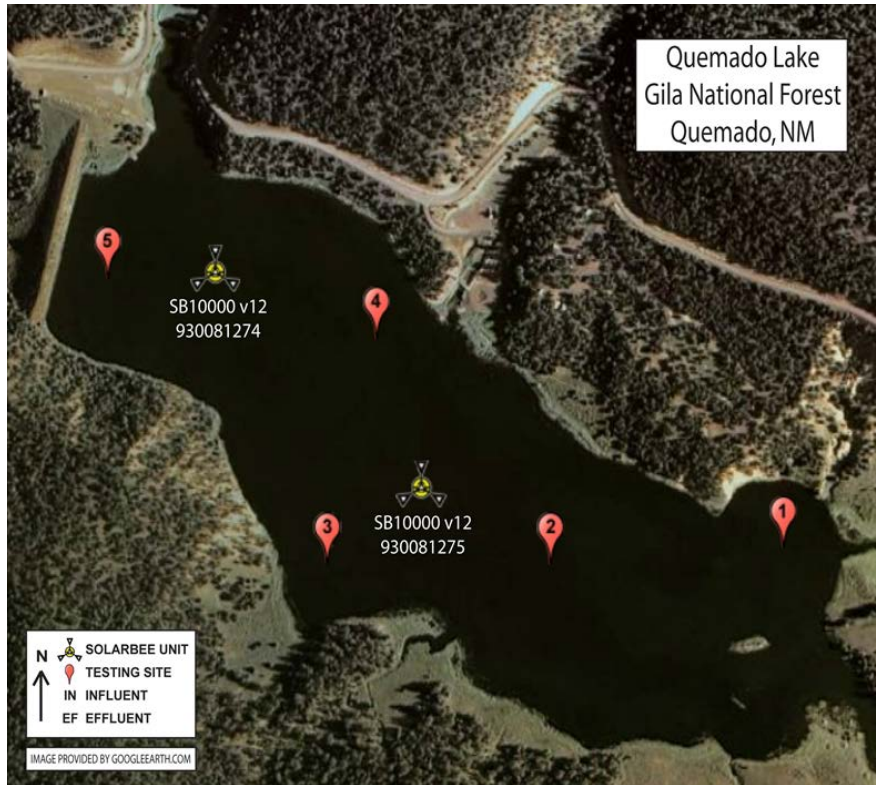


Appendix E2 – 2010 LRMP Mon

Most Current Reservoir System Summary & Map

LOCATION: Quemado Lake, Quemado, NM

Objective: To provide long-distance circulation to control harmful blue-green algae blooms, improve dissolved oxygen levels, and improve fish habitats.



INITIAL PROJECT SUMMARY*	
FRESH WATER RESERVOIR:	Quemado Lake
DEEPEST DEPTH (feet)	20.00
AVERAGE DEPTH (feet)	10.00
SURFACE AREA (acres)	111.9
ELEVATION (feet):	7,272
ATMOSPHERIC PRESSURE(mmHg):	578.2
VOLUME (million gallons)	365
# of SB	2
CURRENT TYPE of SB	SB10000 v12
INSTALL DATE	08/24/09
*SEE OTHER TABS FOR CURRENT PROJECT DATA	

SolarBee Water Quality Testing is intended to provide general indications of water quality and slurry / sludge / sediment profiles at the time of testing. In most cases, there are not enough test points for statistical significance. Please call for help with interpreting this data. This information should not be considered a substitute for larger, more comprehensive system studies that SolarBee, Inc. and other companies can provide at additional cost.

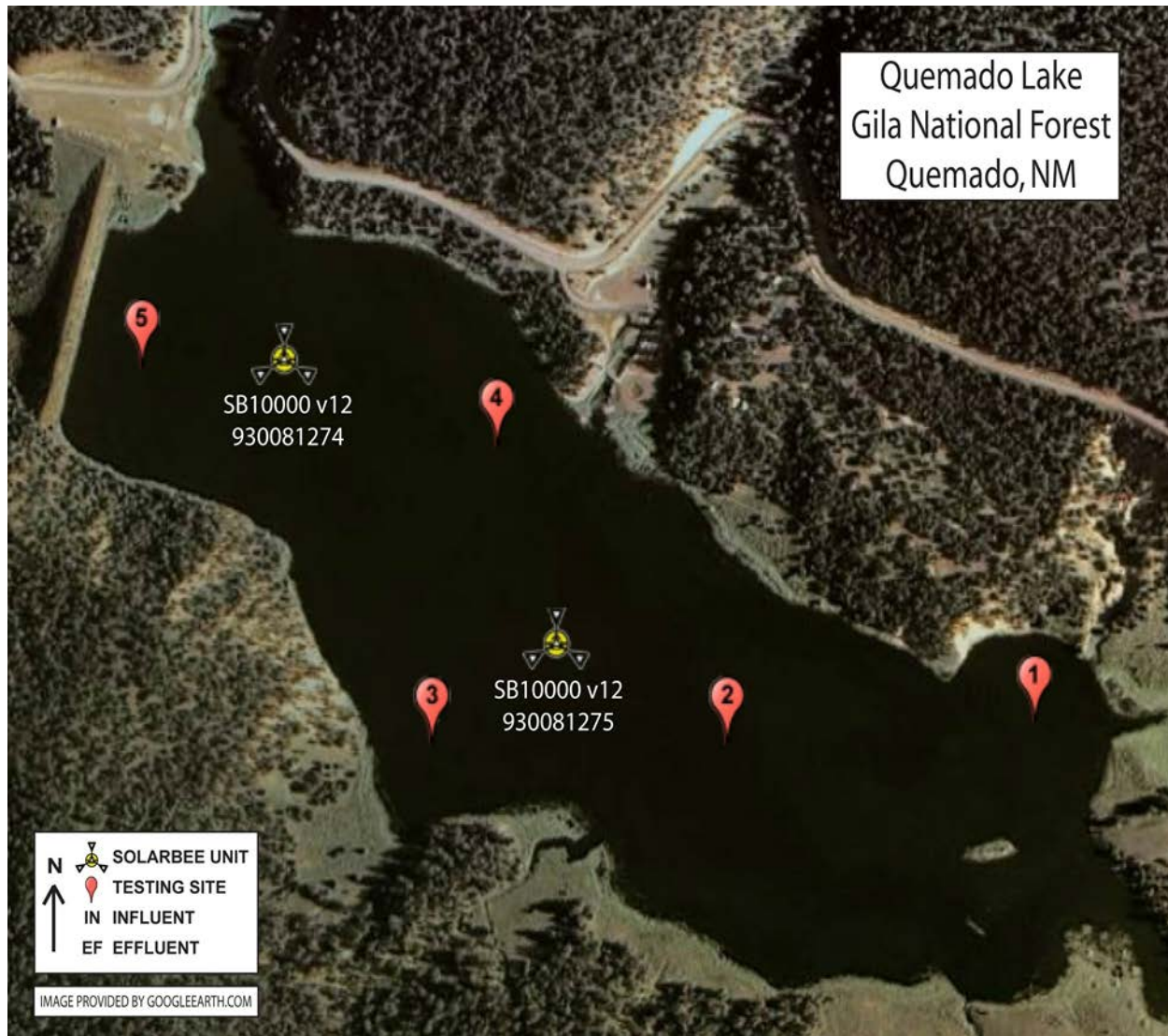
GPS locations are recorded for all test stations and unit positions. Depending on conditions, there can be a positioning discrepancy of +/-30 feet at any given time.

LOCATION: Quemado Lake - Quemado, NM
Installation, Service, & Testing Summary

DATE	SERVICE & TESTING SUMMARY
04-17-10	<p>SERVICE: (2) SB10000 v12 (930081274, 930081275)</p> <p>CREW: Steve Shanabarger / Jerry Pachl</p> <p>Crew on location to check on location. Moved units back to original GPS and performed general maintenance. Water quality testing was performed at newly designated sites. Secchi ranged from 3.75 - 4.50 ft. DO ranged from 4.54 - 8.00 mg/L, pH ranged from 7.19 - 7.83</p>
08-24-09	<p>INSTALLATION: (2) SB10000 v12 (930081274, 930081275)</p> <p>CREW: Wyatt Dinius / Jeremy DeShaw</p> <p>Crew on location to install units. Crew noted that install went well. Water quality testing was performed at newly designated sites. Secchi ranged from 2.17 - 6.58 ft. DO ranged from 0.06 - 8.75 mg/L, pH ranged from 7.43 - 8.37</p>

Historical Maps of Reservoir System and SolarBee Unit Layout

LOCATION: Quemado Lake, Quemado, NM



Equipment Specifications & Unit History

LOCATION: Quemado Lake, Quemado, NM

Unit Serial #:	930081274	930081275
SB MACHINE:		
GENERAL LOCATION:	Northwest Unit	South East Unit
UNIT NAME:		
MODEL #:	SB10000 v12	SB10000 v12
INSTALLATION DATE:	08/24/09	08/24/09
PV MODULES:		
TYPE:	3@80W	3@80W
TILT ANGLE:	3@45	3@45
LOCATION:	On Unit	On Unit
ELECTRONIC CONTROLLER:		
TYPE:	A-Series	A-Series
MODBUS ID:	3	4
BRAINBOARD ID:	02445	2446
RUNTIME PROGRAMMING:	FW2v03-R1	FW2v03-R1
MOTOR:		
TYPE:	14" Brushless	14" Brushless
SERIAL #:	G2413C0002	G2413C0008
FLUID INTAKE ASSEMBLY:		
TYPE:	HP-36"	HP-36"
SPECIAL FEATURES:		
TOTAL HOSE LENGTH(ft.):	10	10
HOSE SECTIONS(#/Type):	1@10	1@10
INTAKE HOSE ADJUSTMENT:	3 Chain System	3 Chain System
FLOAT ARM ASSEMBLY:		
TURNBUCKLE:	1"	1"
FLOATS:	ACE Standard	ACE Standard
FLOAT CABLES:	Yes	Yes
ANCHORING:		
TYPE:	Mooring Blocks	Mooring Blocks
if moored, number of anchors used:	2	2
if moored, length of anchor chain (ft.):	120	120
ACCESSORIES:		
MARKER KIT:	Yes	Yes
BEACON:	Yes	Yes
BIRD DETERRENT:	Spikes	Spikes
LEGS:	None	None

Unit Serial #:	930081274	930081275
OTHER:		
<u>Unit Work Summary:</u>	04-17-10: Moved unit back to original GPS and performed general maintenance.	04-17-10: Moved unit back to original GPS and performed general maintenance.
	08-24-09: Installed unit.	08-24-09: Installed unit.

Location / Unit Data**LOCATION: Quemado, Quemado, NM**

DATE:	08/24/09	04/17/10
CONTACT:		
FIRST CONTACT PERSON:	Jerry Monzingo	Jerry Monzingo
PHONE:	505-388-8221	575-536-2250
CELL:	575-313-2741	575-313-2741
SECOND CONTACT PERSON:		
PHONE:		
CELL:		
CLIMATE / WEATHER:		
TYPE:	Trop/ SubtropSteppe	Trop/ SubtropSteppe
CONDITIONS:	Sunny	Cloudy
WIND SPEED(mph):	10-15	5-15
AIR TEMPERATURE(Deg F):	68	60
SOLAR IRRADIATION:	868	735
TIME:	13:00	1:30
RESERVOIR OBSERVATIONS:		
FLOATING DEBRIS:	None	Weeds
TYPE OF AQUATIC LIFE:	Fish	Fish Birds
ALGAE, % COVERAGE	30%	0%
DUCKWEED, % COVERAGE	0%	0%
CHEMICALLY TREATED:	No	No
ODOR(0 to 10):	0	2
SURFACE TENSION:	9	8
OWNER MAINTENANCE EFFORT(0 to 10):	NA	7
WATER COLOR:	Green	Clear Green / Brown
AERATION EQUIPMENT:		
TYPE:	None	None
TOTAL HP:		
SB MACHINE:		
GENERAL LOCATION:	Northwest Unit	Northwest Unit
UNIT NAME:		
MODEL #:	SB10000 v12	SB10000 v12
SERIAL #:	930081274	930081274
RUNTIME PROGRAMMING:	FW2v03	FW2v03
SCHEDULED REVERSE:	R1	R1
GPS LOCATION:	34.13715 -108.49492	34.13715 -108.49492
MACHINE MONITORING DATA:		
BATTERY VOLTAGE (PV's UNPLUGGED):	13.3	12.9
BATTERY VOLTAGE (PV's PLUGGED IN):	13.4	14.6

DATE:	08/24/09	04/17/10
MOTOR CURRENT (PV's UNPLUGGED):	2.02	3.70
OBSERVED RPM:	81	80
UNIT STATUS AT ARRIVAL:	Install	Healthy System
UNIT STATUS AT DEPARTURE:	Healthy System	Healthy System
WAS NEW FIRMWARE UPLOADED?:	NA	No
DISTRIBUTION DISH ADJUSTMENT ARRIVAL(in.):	Install	2.50
DISTRIBUTION DISH ADJUSTMENT LEAVING(in.):	2.00	2.50
FLUID INTAKE PLUGGING (%):	Install	0%
TOP OF WEIGHT BEARING SEDIMENT(ft.):	20.33	27.58
FLUID INTAKE DEPTH ARRIVAL(ft.):	Install	9.00
FLUID INTAKE DEPTH DEPARTURE(ft.):	9.00	9.00
IMPELLER PLUGGING (%):	Install	0%
OTHER OBSERVATIONS:		
SECCHI DEPTH(ft.):	6.42	4.50
OTHER:		
SB MACHINE:		
GENERAL LOCATION:	Southeast Unit	Southeast Unit
UNIT NAME:		
MODEL #:	SB10000 v12	SB10000 v12
SERIAL #:	930081275	930081275
RUNTIME PROGRAMMING:	FW2v03	FW2v03
SCHEDULED REVERSE:	R1	R1
GPS LOCATION:	34.13459 -108.49171	34.13459 -108.49171
MACHINE MONITORING DATA:		
B ATTERY VOLTAGE (PV's UNPLUGGED):	13.7	12.7
BATTERY VOLTAGE (PV's PLUGGED IN):	14.2	14.8
MOTOR CURRENT (PV's UNPLUGGED):	1.88	3.10
OBSERVED RPM:	81	80
UNIT STATUS AT ARRIVAL:	Install	Healthy System
UNIT STATUS AT DEPARTURE:	Healthy System	Healthy System
WAS NEW FIRMWARE UPLOADED?:	Initial Installation	No
DISTRIBUTION DISH ADJUSTMENT ARRIVAL(in.):	Install	2.50
DISTRIBUTION DISH ADJUSTMENT LEAVING(in.):	2.00	2.50
FLUID INTAKE PLUGGING (%):	Install	0%

DATE:	08/24/09	04/17/10
TOP OF WEIGHT BEARING SEDIMENT(ft.):	16.00	25.00
FLUID INTAKE DEPTH ARRIVAL(ft.):	Install	8.50
FLUID INTAKE DEPTH DEPARTURE(ft.):	8.50	8.50
IMPELLER PLUGGING (%):	Install	0%
OTHER OBSERVATIONS:		
SECCHI DEPTH(ft.):	6.33	4.00
OTHER:		
SERVICE CREW:		
TEAM NAMES:	Wyatt Dinius Jeremy DeShaw	Steve Shanabarger Jerry Pachi
TIME ON LOCATION:		
DATE:	08/24/09	04/17/10
TIME IN / TIME OUT:	8:38 / 19:00	11:00 / 3:30
DATE:	08/25/09	
TIME IN / TIME OUT:	9:18 / 12:53	
TOTAL HOURS ON LOCATION:	14.25	4.50

Testing Data

LOCATION: Quemado Lake, Quemado, NM

DATE:		08/24/09	04/17/10
CLIMATE / WEATHER:			
TYPE:		Trop/ SubtropSteppe	Trop/ SubtropSteppe
CONDITIONS:		Sunny	Cloudy
WIND SPEED(mph):		10-15	5-15
AIR TEMPERATURE (Deg F):		68	60
TESTING CREW:			
TEAM NAMES:		Wyatt Dinius Jeremy DeShaw	Steve Shanabarger Jerry Pachl
TEST POINT #1			
		34.13383 -108.48607	34.13383 -108.48607
START TIME:		9:59	2:15
FINISH TIME:		10:01	2:20
TEST POINT #1			
SECCHI DEPTH(ft.):		2.17	3.75
TOP OF SLURRY(ft.):		NA	None
TOP OF WEIGHT BEARING SEDIMENT(ft.):		2.17	8.34
BOTTOM OF RESERVOIR(ft.):		NA	8.34
WATER COLOR:		Green	Brown / Green
SLURRY COLOR:		NA	None
SEDIMENT COLOR:		NA	Brown
FREE WATER THICKNESS (ft.):		NA	NA
SLURRY THICKNESS (ft.):		NA	NA
SEDIMENT THICKNESS (ft.):		NA	0.00
TOTAL RESERVOIR DEPTH (ft.):		NA	8.34
TEST POINT #1			
TEMPERATURE (Deg C):			
DEPTH (ft):	0	17.75	13.90
(0.30 m)	1	17.65	13.70
(0.61 m)	2		13.40
(0.91 m)	3		12.12
(1.22 m)	4		11.40
(1.52 m)	5		10.92
(1.83 m)	6		10.50

DATE:		08/24/09	04/17/10
(2.13 m)	7		9.85
(2.44 m)	8		9.15
(2.74 m)	9		
TEST POINT #1			
SPECIFIC CONDUCTANCE (mS/cm)			
DEPTH (ft):	0	0.440	0.193
(0.30 m)	1	0.441	0.193
(0.61 m)	2		0.193
(0.91 m)	3		0.192
(1.22 m)	4		0.192
(1.52 m)	5		0.193
(1.83 m)	6		0.191
(2.13 m)	7		0.192
(2.44 m)	8		0.156
(2.74 m)	9		
TEST POINT #1			
DISSOLVED OXYGEN (mg/l)			
DEPTH (ft):	0	5.33	7.72
(0.30 m)	1	5.22	7.74
(0.61 m)	2		7.76
(0.91 m)	3		7.85
(1.22 m)	4		7.78
(1.52 m)	5		7.79
(1.83 m)	6		7.74
(2.13 m)	7		7.47
(2.44 m)	8		7.65
(2.74 m)	9		
TEST POINT #1			
pH			
DEPTH (ft):	0	7.98	7.70
(0.30 m)	1	8.00	7.72
(0.61 m)	2		7.71
(0.91 m)	3		7.69
(1.22 m)	4		7.65
(1.52 m)	5		7.62
(1.83 m)	6		7.60
(2.13 m)	7		7.51
(2.44 m)	8		7.44
(2.74 m)	9		
TEST POINT #2			
GPS LOCATION:		34.13364 -108.48970	34.13364 -108.48970
START TIME:		10:03	2:25
FINISH TIME:		10:12	2:30

DATE:		08/24/09	04/17/10
TEST POINT #2			
SECCHI DEPTH(ft.):		4.17	3.75
TOP OF SLURRY (ft.):		NA	None
TOP OF SEDIMENT(ft.):		4.17	11.41
BOTTOM OF RESERVOIR(ft.):		NA	11.41
WATER COLOR:		Green	Brown / Green
SLURRY COLOR:		NA	None
SEDIMENT COLOR:		NA	Brown
FREE WATER THICKNESS (ft.):		NA	NA
SLURRY THICKNESS (ft.):		NA	NA
SEDIMENT THICKNESS (ft.):		NA	0.00
TOTAL RESERVOIR DEPTH (ft.):		NA	11.41
TEST POINT #2			
TEMPERATURE (degrees C):			
DEPTH (ft):	0	18.77	13.55
(0.30 m)	1	18.71	13.76
(0.61 m)	2	18.50	12.25
(0.91 m)	3	18.23	10.81
(1.22 m)	4		10.69
(1.52 m)	5		10.55
(1.83 m)	6		10.44
(2.13 m)	7		10.23
(2.44 m)	8		9.96
(2.74 m)	9		9.74
(3.05 m)	10		9.63
(3.35 m)	11		
TEST POINT #2			
SPECIFIC CONDUCTANCE (mS/cm)			
DEPTH (ft):	0	0.440	0.193
(0.30 m)	1	0.440	0.193
(0.61 m)	2	0.440	0.194
(0.91 m)	3	0.440	1.930
(1.22 m)	4		0.193
(1.52 m)	5		0.192
(1.83 m)	6		0.192
(2.13 m)	7		0.191
(2.44 m)	8		0.191
(2.74 m)	9		0.192
(3.05 m)	10		0.193
(3.35 m)	11		

DATE:		08/24/09	04/17/10
TEST POINT #2			
DISSOLVED OXYGEN (mg/l)			
DEPTH (ft):	0		
(0.30 m)	1	7.25	7.70
(0.61 m)	2	7.17	7.90
(0.91 m)	3	6.93	7.99
(1.22 m)	4		7.86
(1.52 m)	5		7.87
(1.83 m)	6		7.86
(2.13 m)	7		7.79
(2.44 m)	8		7.60
(2.74 m)	9		7.44
(3.05 m)	10		7.10
(3.35 m)	11		
TEST POINT #2			
pH			
DEPTH (ft):	0	8.22	7.76
(0.30 m)	1	8.22	7.75
(0.61 m)	2	8.22	7.75
(0.91 m)	3	8.21	7.72
(1.22 m)	4		7.70
(1.52 m)	5		7.68
(1.83 m)	6		7.67
(2.13 m)	7		7.64
(2.44 m)	8		7.60
(2.74 m)	9		7.55
(3.05 m)	10		7.50
(3.35 m)	11		
TEST POINT #3			
GPS LOCATION:		34.13364	34.13364
		-108.49318	-108.49318
START TIME:		10:15	2:36
FINISH TIME:		10:28	2:48
TEST POINT #3			
SECCHI DEPTH(ft.):		6.58	3.75
TOP OF SLURRY (ft.):		NA	NA
TOP OF SEDIMENT(ft.):		10.33	19.34
BOTTOM OF RESERVOIR(ft.):		NA	19.34
WATER COLOR:		Green	Green / Brown
SLURRY COLOR:		NA	NA
SEDIMENT COLOR:		NA	NA
FREE WATER THICKNESS (ft.):		NA	NA
SLURRY THICKNESS (ft.):		NA	NA

DATE:		08/24/09	04/17/10
SEDIMENT THICKNESS (ft.):		NA	0.00
TOTAL RESERVOIR DEPTH (ft.):		NA	19.34
TEST POINT #3			
TEMPERATURE (degrees C):			
DEPTH (ft):	0	18.80	13.95
(0.30 m)	1	18.61	13.82
(0.61 m)	2	18.69	13.62
(0.91 m)	3	18.38	12.42
(1.22 m)	4	18.31	11.51
(1.52 m)	5	18.28	11.16
(1.83 m)	6	18.22	11.13
(2.13 m)	7	18.20	11.00
(2.44 m)	8	18.11	10.81
(2.74 m)	9	18.08	10.20
(3.05 m)	10		9.37
(3.35 m)	11		9.35
(3.66 m)	12		8.91
(3.96 m)	13		8.40
(4.27 m)	14		7.81
(4.57 m)	15		6.87
(4.88 m)	16		6.80
(5.18 m)	17		6.41
(5.49 m)	18		
(5.79 m)	19		
TEST POINT #3			
SPECIFIC CONDUCTANCE (mS/cm)			
DEPTH (ft):	0	0.440	0.193
(0.30 m)	1	0.441	0.193
(0.61 m)	2	0.441	0.193
(0.91 m)	3	0.440	0.193
(1.22 m)	4	0.439	0.193
(1.52 m)	5	0.439	0.193
(1.83 m)	6	0.440	0.193
(2.13 m)	7	0.441	0.193
(2.44 m)	8	0.443	0.193
(2.74 m)	9	0.445	0.193
(3.05 m)	10		0.194
(3.35 m)	11		0.193
(3.66 m)	12		0.196
(3.96 m)	13		0.199
(4.27 m)	14		0.217
(4.57 m)	15		0.251
(4.88 m)	16		0.259
(5.18 m)	17		0.272

DATE:		08/24/09	04/17/10
(5.49 m)	18	0.303	
(5.79 m)	19		
TEST POINT #3			
DISSOLVED OXYGEN (mg/l)			
DEPTH (ft):	0	7.31	7.61
(0.30 m)	1	7.22	7.64
(0.61 m)	2	7.24	7.69
(0.91 m)	3	7.33	7.81
(1.22 m)	4	7.63	7.89
(1.52 m)	5	7.60	7.84
(1.83 m)	6	7.09	7.82
(2.13 m)	7	6.14	7.80
(2.44 m)	8	5.30	7.77
(2.74 m)	9	4.12	7.75
(3.05 m)	10		7.34
(3.35 m)	11		7.11
(3.66 m)	12		6.99
(3.96 m)	13		6.55
(4.27 m)	14		5.90
(4.57 m)	15		5.27
(4.88 m)	16		4.73
(5.18 m)	17		4.54
(5.49 m)	18		
(5.79 m)	19		
TEST POINT #3			
pH			
DEPTH (ft):	0	8.25	7.82
(0.30 m)	1	8.24	7.83
(0.61 m)	2	8.25	7.81
(0.91 m)	3	8.25	7.81
(1.22 m)	4	8.27	7.79
(1.52 m)	5	8.27	7.76
(1.83 m)	6	8.24	7.74
(2.13 m)	7	8.19	7.72
(2.44 m)	8	8.16	7.72
(2.74 m)	9	8.05	7.70
(3.05 m)	10		7.63
(3.35 m)	11		7.59
(3.66 m)	12		7.56
(3.96 m)	13		7.57
(4.27 m)	14		7.45
(4.57 m)	15		7.42
(4.88 m)	16		7.38
(5.18 m)	17		7.36
(5.49 m)	18		
(5.79 m)	19		

DATE:		08/24/09	04/17/10
TEST POINT #4			
GPS LOCATION:		34.13632	34.13632
		-108.49241	-108.49241
START TIME:		10:31	1:32
FINISH TIME:		9:46	1:42
TEST POINT #4			
SECCHI DEPTH(ft.):		6.42	3.75
TOP OF SLURRY (ft.):		NA	NA
TOP OF SEDIMENT(ft.):		10.50	17.50
BOTTOM OF RESERVOIR(ft.):		NA	17.50
WATER COLOR:		Green	Clear Green / Brown
SLURRY COLOR:		NA	NA
SEDIMENT COLOR:		NA	NA
FREE WATER THICKNESS (ft.):		NA	NA
SLURRY THICKNESS (ft.):		NA	NA
SEDIMENT THICKNESS (ft.):		NA	0.00
TOTAL RESERVOIR DEPTH (ft.):		NA	17.50
TEST POINT #4			
TEMPERATURE (degrees C):			
DEPTH (ft):	0	18.74	13.77
(0.30 m)	1	18.74	13.53
(0.61 m)	2	18.69	12.73
(0.91 m)	3	18.71	11.85
(1.22 m)	4	18.65	11.15
(1.52 m)	5	18.61	10.77
(1.83 m)	6	18.33	10.45
(2.13 m)	7	18.29	10.43
(2.44 m)	8	18.30	10.33
(2.74 m)	9	18.24	10.20
(3.05 m)	10		9.81
(3.35 m)	11		9.52
(3.66 m)	12		8.98
(3.96 m)	13		8.57
(4.27 m)	14		8.40
(4.57 m)	15		8.33
(4.88 m)	16		7.82
(5.18 m)	17		7.84
(5.49 m)	18		
(5.79 m)	19		

DATE:		08/24/09	04/17/10
TEST POINT #4			
SPECIFIC CONDUCTANCE (mS/cm)			
DEPTH (ft):	0	0.439	0.193
(0.30 m)	1	0.439	0.193
(0.61 m)	2	0.440	0.193
(0.91 m)	3	0.439	0.193
(1.22 m)	4	0.439	0.193
(1.52 m)	5	0.439	0.192
(1.83 m)	6	0.439	0.192
(2.13 m)	7	0.438	0.193
(2.44 m)	8	0.438	0.193
(2.74 m)	9	0.437	0.192
(3.05 m)	10		0.192
(3.35 m)	11		0.193
(3.66 m)	12		0.193
(3.96 m)	13		0.194
(4.27 m)	14		0.196
(4.57 m)	15		0.199
(4.88 m)	16		0.200
(5.18 m)	17		0.217
(5.49 m)	18		
(5.79 m)	19		
TEST POINT #4			
DISSOLVED OXYGEN (mg/l)			
DEPTH (ft):	0	7.51	7.69
(0.30 m)	1	7.51	7.69
(0.61 m)	2	7.47	7.82
(0.91 m)	3	7.48	8.00
(1.22 m)	4	7.39	7.90
(1.52 m)	5	7.35	7.81
(1.83 m)	6	7.77	7.73
(2.13 m)	7	7.08	7.71
(2.44 m)	8	8.21	7.68
(2.74 m)	9	8.25	7.63
(3.05 m)	10		7.47
(3.35 m)	11		7.13
(3.66 m)	12		7.00
(3.96 m)	13		6.66
(4.27 m)	14		6.37
(4.57 m)	15		6.31
(4.88 m)	16		6.06
(5.18 m)	17		5.90
(5.49 m)	18		
(5.79 m)	19		

DATE:		08/24/09	04/17/10
TEST POINT #4			
pH			
DEPTH (ft):	0	8.30	7.71
(0.30 m)	1	8.30	7.72
(0.61 m)	2	8.30	7.71
(0.91 m)	3	8.30	7.70
(1.22 m)	4	8.30	7.67
(1.52 m)	5	8.30	7.65
(1.83 m)	6	8.33	7.64
(2.13 m)	7	8.34	7.64
(2.44 m)	8	8.35	7.62
(2.74 m)	9	8.35	7.62
(3.05 m)	10		7.53
(3.35 m)	11		7.51
(3.66 m)	12		7.50
(3.96 m)	13		7.52
(4.27 m)	14		7.42
(4.57 m)	15		7.42
(4.88 m)	16		7.40
(5.18 m)	17		7.41
(5.49 m)	18		
(5.79 m)	19		
TEST POINT #5			
GPS LOCATION:		34.13704	34.13704
		-108.49660	-108.49660
START TIME:		10:49	1:10
FINISH TIME:		11:18	1:23
TEST POINT #5			
SECCHI DEPTH(ft.):		6.25	4.50
TOP OF SLURRY (ft.):		NA	NA
TOP OF SEDIMENT(ft.):		25.50	32.75
BOTTOM OF RESERVOIR(ft.):		NA	32.75
WATER COLOR:		Green	Clear Green / Brown
SLURRY COLOR:		NA	NA
SEDIMENT COLOR:		NA	NA
FREE WATER THICKNESS (ft.):		NA	NA
SLURRY THICKNESS (ft.):		NA	NA
SEDIMENT THICKNESS (ft.):		NA	0.00
TOTAL RESERVOIR DEPTH (ft.):		NA	32.75

DATE:		08/24/09	04/17/10
TEST POINT #5			
TEMPERATURE (degrees C):			
DEPTH (ft):	0	18.74	13.51
(0.30 m)	1	18.80	12.58
(0.61 m)	2	18.56	12.26
(0.91 m)	3	18.47	12.00
(1.22 m)	4	18.39	11.22
(1.52 m)	5	18.36	11.17
(1.83 m)	6	18.33	10.85
(2.13 m)	7	18.31	10.47
(2.44 m)	8	18.30	10.43
(2.74 m)	9	18.23	10.31
(3.05 m)	10	18.21	9.99
(3.35 m)	11	18.18	9.83
(3.66 m)	12	18.08	9.62
(3.96 m)	13	17.85	9.05
(4.27 m)	14	17.76	8.29
(4.57 m)	15	17.74	7.80
(4.88 m)	16	17.74	7.53
(5.18 m)	17	17.73	7.21
(5.49 m)	18	17.70	7.00
(5.79 m)	19	17.63	6.81
(6.10 m)	20	17.49	6.33
(6.40 m)	21	17.37	6.08
(6.71 m)	22	17.15	6.01
(7.01 m)	23	16.96	5.74
(7.32 m)	24	16.62	5.69
(7.62 m)	25		5.62
(9.14 m)	30		
(10.67 m)	35		
TEST POINT #5			
SPECIFIC CONDUCTANCE (mS/cm)			
DEPTH (ft):	0	0.438	0.193
(0.30 m)	1	0.437	0.194
(0.61 m)	2	0.437	0.193
(0.91 m)	3	0.438	0.193
(1.22 m)	4	0.437	0.194
(1.52 m)	5	0.438	0.192
(1.83 m)	6	0.439	0.193
(2.13 m)	7	0.439	0.192
(2.44 m)	8	0.439	0.192
(2.74 m)	9	0.442	0.193
(3.05 m)	10	0.441	0.194
(3.35 m)	11	0.446	0.194
(3.66 m)	12	0.449	0.194

DATE:		08/24/09	04/17/10
(3.96 m)	13	0.453	0.196
(4.27 m)	14	0.454	0.198
(4.57 m)	15	0.455	0.213
(4.88 m)	16	0.455	0.213
(5.18 m)	17	0.455	0.226
(5.49 m)	18	0.456	0.231
(5.79 m)	19	0.457	0.231
(6.10 m)	20	0.459	0.266
(6.40 m)	21	0.461	0.269
(6.71 m)	22	0.464	0.269
(7.01 m)	23	0.466	0.275
(7.32 m)	24	0.472	0.301
(7.62 m)	25		0.311
(9.14 m)	30		
(10.67 m)	35		

TEST POINT #5

DISSOLVED OXYGEN
(mg/l)

DEPTH (ft):	0	8.63	7.74
(0.30 m)	1	8.63	7.89
(0.61 m)	2	8.75	7.89
(0.91 m)	3	8.54	7.90
(1.22 m)	4	8.13	7.87
(1.52 m)	5	7.75	7.76
(1.83 m)	6	7.66	7.70
(2.13 m)	7	7.46	7.69
(2.44 m)	8	6.97	7.55
(2.74 m)	9	5.22	7.51
(3.05 m)	10	5.49	7.40
(3.35 m)	11	3.35	7.39
(3.66 m)	12	1.90	7.16
(3.96 m)	13	0.18	7.13
(4.27 m)	14	0.28	6.99
(4.57 m)	15	0.15	6.72
(4.88 m)	16	0.11	6.60
(5.18 m)	17	0.09	6.53
(5.49 m)	18	0.08	6.29
(5.79 m)	19	0.09	5.97
(6.10 m)	20	0.08	5.85
(6.40 m)	21	0.07	5.73
(6.71 m)	22	0.06	5.62
(7.01 m)	23	0.07	5.21
(7.32 m)	24	0.07	5.03
(7.62 m)	25		4.90
(9.14 m)	30		
(10.67 m)	35		

DATE:		08/24/09	04/17/10
TEST POINT #5			
pH			
DEPTH (ft):	0	8.37	7.60
(0.30 m)	1	8.37	7.57
(0.61 m)	2	8.37	7.50
(0.91 m)	3	8.36	7.45
(1.22 m)	4	8.34	7.38
(1.52 m)	5	8.33	7.33
(1.83 m)	6	8.32	7.27
(2.13 m)	7	8.32	7.25
(2.44 m)	8	8.30	7.24
(2.74 m)	9	8.20	7.22
(3.05 m)	10	8.25	7.24
(3.35 m)	11	8.06	7.21
(3.66 m)	12	7.95	7.20
(3.96 m)	13	7.85	7.20
(4.27 m)	14	7.81	7.19
(4.57 m)	15	7.81	7.19
(4.88 m)	16	7.81	7.21
(5.18 m)	17	7.81	7.23
(5.49 m)	18	7.80	7.25
(5.79 m)	19	7.77	7.28
(6.10 m)	20	7.72	7.30
(6.40 m)	21	7.67	7.32
(6.71 m)	22	7.62	7.35
(7.01 m)	23	7.55	7.35
(7.32 m)	24	7.43	7.40
(7.62 m)	25		7.44
(9.14 m)	30		
(10.67 m)	35		
TEST POINT #6			
GPS LOCATION:		33.02962 -108.15781	33.02962 -108.15781
START TIME:		10:58	12:56
FINISH TIME:		11:05	13:09
TEST POINT #6			
SECCHI DEPTH(ft.):		2.08	1.75
TOP OF SLURRY (ft.):		NA	6.58
TOP OF SEDIMENT(ft.):		NA	6.92
BOTTOM OF RESERVOIR(ft.):		6.67	7.50
WATER COLOR:		Light Brown	Green
SLURRY COLOR:		NA	Brown
SEDIMENT COLOR:		NA	Brown

DATE:		08/24/09	04/17/10
TEST POINT #6			
TEMPERATURE (degrees C):			
DEPTH (ft):	0	10.17	5.50
(0.30 m)	1	10.17	5.49
(0.61 m)	2	10.17	5.47
(0.91 m)	3	10.17	5.36
(1.22 m)	4	10.18	5.34
(1.52 m)	5	10.18	5.28
(1.83 m)	6	10.18	5.13
(2.13 m)	7		
(2.44 m)	8		
TEST POINT #6			
TEST POINT #7			
TEST POINT #8			