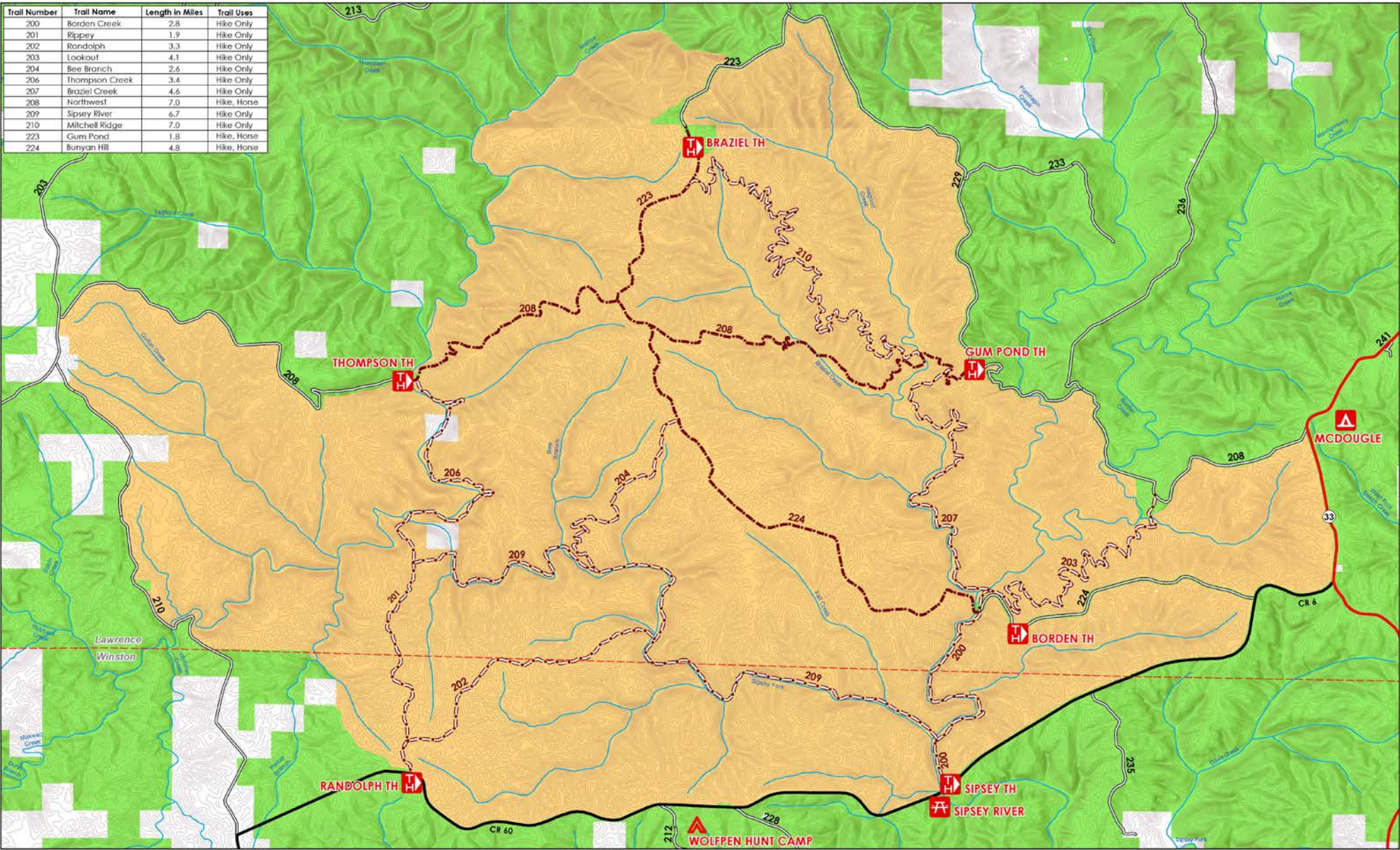


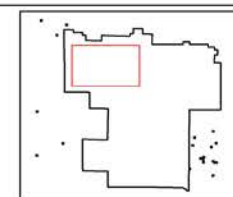
Trail Number	Trail Name	Length in Miles	Trail Uses
200	Borden Creek	2.8	Hike Only
201	Rippey	1.9	Hike Only
202	Randolph	3.3	Hike Only
203	Lookout	4.1	Hike Only
204	Bee Branch	2.6	Hike Only
206	Thompson Creek	3.4	Hike Only
207	Braziel Creek	4.6	Hike Only
208	Northwest	7.0	Hike, Horse
209	Sipsey River	6.7	Hike Only
210	Mitchell Ridge	7.0	Hike Only
223	Gum Pond	1.8	Hike, Horse
224	Bunyan Hill	4.8	Hike, Horse



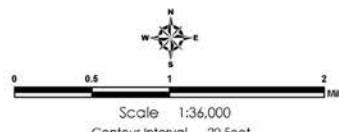
**USDA**  
United States Department of Agriculture



National Forests in Alabama  
Map WIL001  
Date 2/17/2016



**SIPSEY WILDERNESS**  
WILLIAM B. BANKHEAD NATIONAL FOREST



This product is reproduced from geospatial information prepared by the U.S. Department of Agriculture, Forest Service. GIS data and product accuracy may vary. They may be developed from sources of differing accuracy, accurate only at certain scales, based on modeling or interpretation, incomplete while being created or revised, etc. Using GIS products for purposes other than those for which they were created may yield inaccurate or misleading results. This information was released on 02/20/16. The Forest Service reserves the right to correct, update, modify or replace GIS products without notification.

**Legend**

- National Forest Land
- Private Land
- Sipsey Wilderness
- Campground
- Recreation Sites
- Trailhead
- Hunt Camp
- County Boundaries
- Trails - Hike, Horse
- Trails - Hike Only
- Highway
- County Roads
- Forest Service Roads
- Rivers/Creeks
- Contour Lines