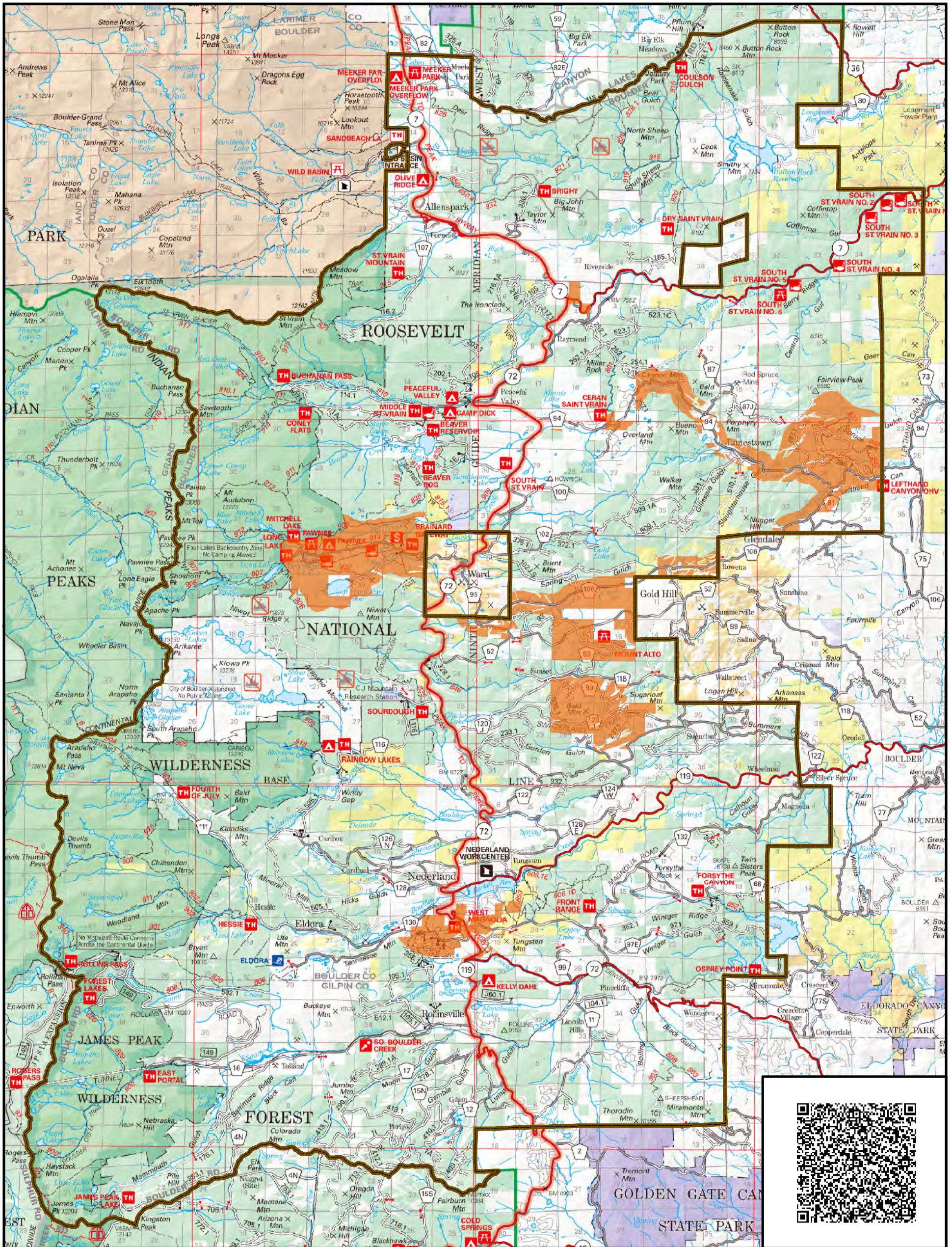


# Boulder Ranger District Shooting Closures

## Arapaho and Roosevelt National Forests

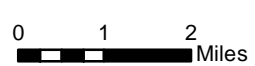


Date: 9/26/2017  
 Time: 12:45:41 PM  
 Author: A.Odom

### National Forest Lands Closed to Shooting

National Forest Lands are colored in green.

Closure Orders in Effect:  
 10-01-2012-09 Allenspark  
 10-01-2012-11 South Nederland  
 10-01-2013-01 Brainard Lake  
 ARP-BRD-2016-2 Flood Related



Pursuant to Title 16, United States Code, Section 551, 36 C.F.R., Section 261.50(a), the following act is prohibited within the Boulder Ranger District of the Arapaho Roosevelt National Forest:  
 \* Discharging a firearm, air rifle or gas gun in the Restricted Areas. 36 C.F.R. Section 261.58(m)  
 Violation of this regulation is punishable as a Class B misdemeanor, by fine of not more than \$5,000.00 for an individual or \$10,000.00 for an organization, or imprisonment for not more than six (6) months, or both. (16, U.S.C. Section 551, and 18, U.S.C. Sections 3559 & 3571)

For more information on target shooting regulations and closures visit: [www.fs.usda.gov/goto/arp/targetshooting](http://www.fs.usda.gov/goto/arp/targetshooting)