



# Mokelumne Wilderness Carson Pass Area Day Use

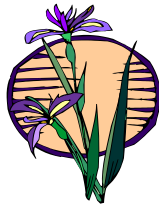
## Eldorado National Forest Amador Ranger District

### Welcome to the Mokelumne Wilderness!

Here you will find over 100 miles of hiking trails which will take you from deep canyons to 10,000 foot peaks. To protect fragile ecosystems, reduce visual and environmental impacts and help maintain healthy water sources, special precautions must be taken within wilderness areas.

#### Round Top Botanical Area

For thousands of years the wildflowers have been blooming seasonally in the Round Top Botanical



Area. Different soil types combine with varying elevations, exposures, and snow depths to produce an impressive collection of plant life in this special area at the junction of three botanical provinces. Whether it is the wildflower season or not, there is a fascinating world of plants to discover here.

#### Round Top Geologic Area

Extinct volcanoes and glacially sculpted land are some of the clues to the past that you will encounter on your journey through the Round Top Geologic Area. Dramatic changes to the landscape have occurred here for over two hundred million years. Evidence of these changes is visible from the ten miles of trails leading through the area.



#### Dogs

Dogs off-leash can threaten wildlife or present a hazard to the safety or convenience of other visitors. Handlers must physically restrain their dogs on a leash less than six feet throughout the duration of their visit.

#### Things to Remember

◆ A valid **wilderness permit** is required for entry into Mokelumne Wilderness for overnight stays. Day permits are not required.



◆ Use is open to hikers and packstock. **Mechanized and motorized equipment** such as bicycles, hanggliders, over-snow vehicles, strollers, chainsaws or game carts is prohibited.

◆ Maximum **group size** is 8 persons for overnight stay and 12 for day use. Wilderness is intended to provide opportunities for solitude. If your group size exceeds these limits, contact the Amador Ranger District or Carson Pass Information Station for alternatives outside of Mokelumne Wilderness.

◆ **Damaging or removing** any natural or historic feature in the wilderness is not allowed. Please leave wildflowers and historical relics for all to enjoy, and avoid trampling delicate lakeshore vegetation.

◆ **Trailhead Day Use Fee** - During the summer a \$5.00 day use fee is charged at the Carson Pass, Carson Pass Overflow, and Meiss trailheads. The concession charges an \$8 day use fee for Woods Lake trailhead.

◆ Leaving refuse, debris or **litter** is prohibited. Pack it in, Pack it out! Toilet paper must be buried or packed out.

#### Hiking Trails

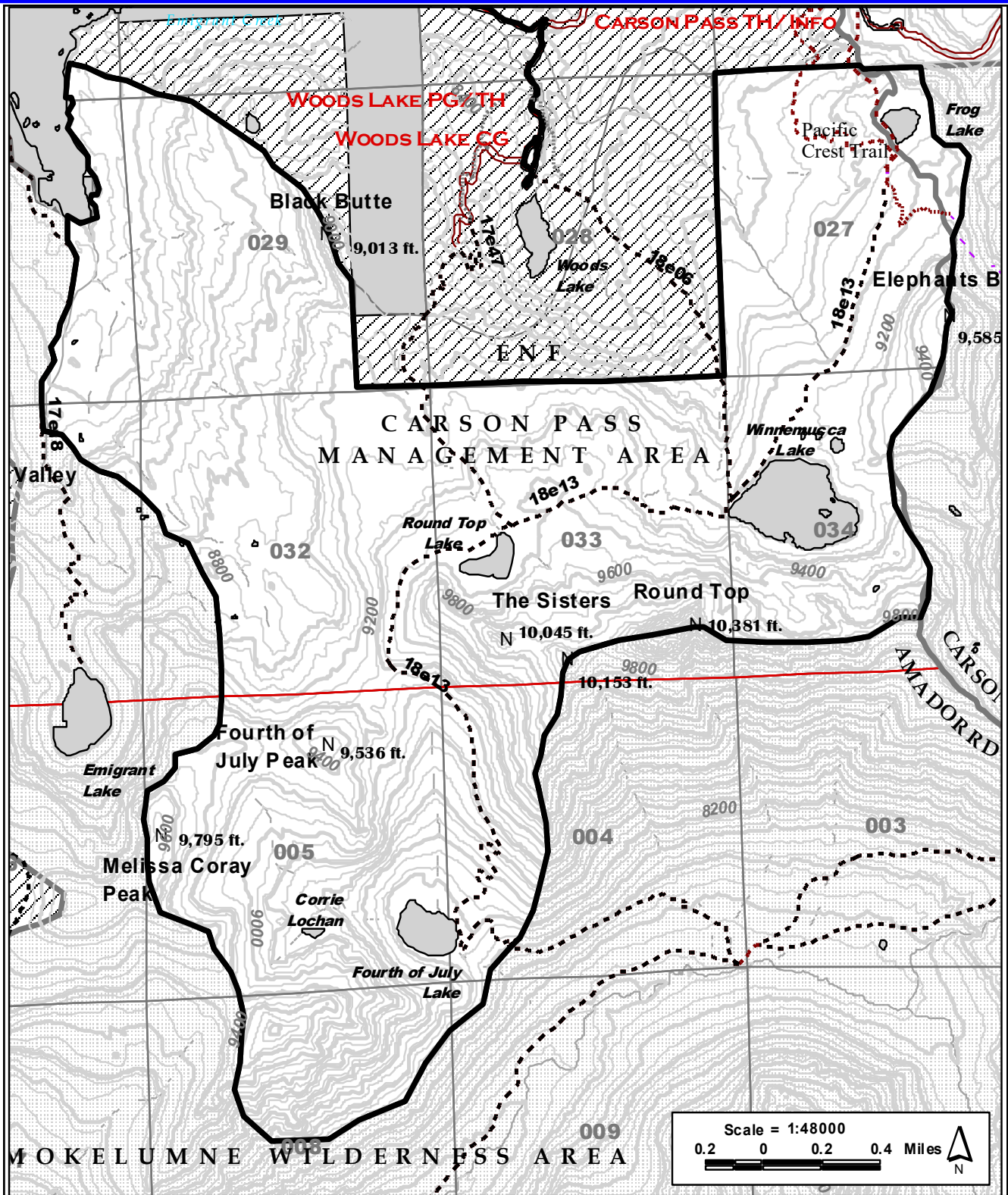
◆ **Carson Pass Trailhead to Winnemucca Lake** (2.5 miles) - An easy hike with great vistas and pristine glacial lakes. This trail passes through a spectacular wildflower display which reaches its peak in mid-July to August.

◆ **Winnemucca Lake to Round Top Lake** (1 mile) - A steeper trail into higher elevations approaching Round Top Peak. Excellent photo opportunities of the surrounding landscape and hardy, windblown alpine and subalpine plant species.

◆ **Woods Lake Trailhead to Winnemucca Lake** (2.0 miles) - This moderate hike leads you into the cool forest and opens up to magnificent, flowering meadows in mid-July and August.

◆ **Woods Lake Trailhead to Round Top Lake** (Lost Cabin Mine Trail, 2.0 miles) - This steeper trail weaves along a creek through red fir forests with scattered open rocky areas.

◆ **Caples Trailhead to Emigrant Lake** (4.3 miles) The longest trail meanders gently along the shore of Caples Lake, climbing slightly through mixed rocky and forested areas, ending with a steeper ascent to grassy meadows surrounding Emigrant Lake.



Permits and Overnight Camping information may be obtained at the following Eldorado National Forest offices:

**Carson Pass Information Station**  
 Summer, Hwy 88 at Carson Pass  
 209—258-8606 (summer only)

**Amador Ranger District Office**  
 209-259-3774 (Pioneer, CA)

USDA is an equal opportunity provider and employer.