



Prescribed Fire at Scale

Dana Skelly

Deputy Fire Staff-Fuels
Malheur National Forest





Prescribed Fire at Scale

Thanks to James Furman, Kevin Hiers, and Brett Williams from Eglin AFB





How do we

Complete the landscape scale burning we have committed to in our NEPA?

Meet forest plan and national cohesive wildland fire strategy—pay me now to avoid the pay me later scenario?





DYSFUNCTION

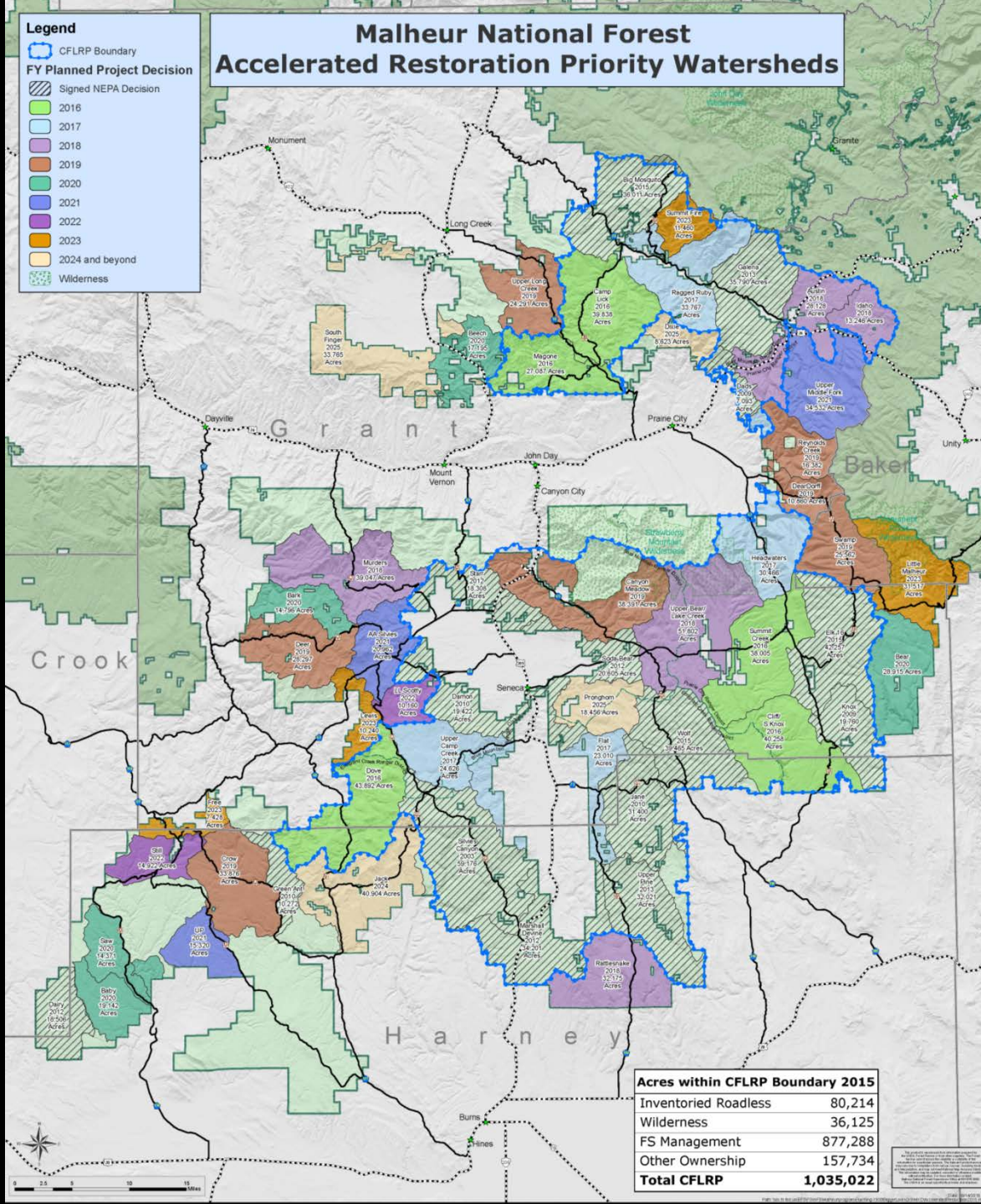
THE ONLY CONSISTENT FEATURE OF ALL OF YOUR DISSATISFYING RELATIONSHIPS IS YOU.



Shelf Stock

- 83,014 of incomplete underburning planned in FACTs
- Decisions signed in 2015 bring this total to more than 140,000 acres







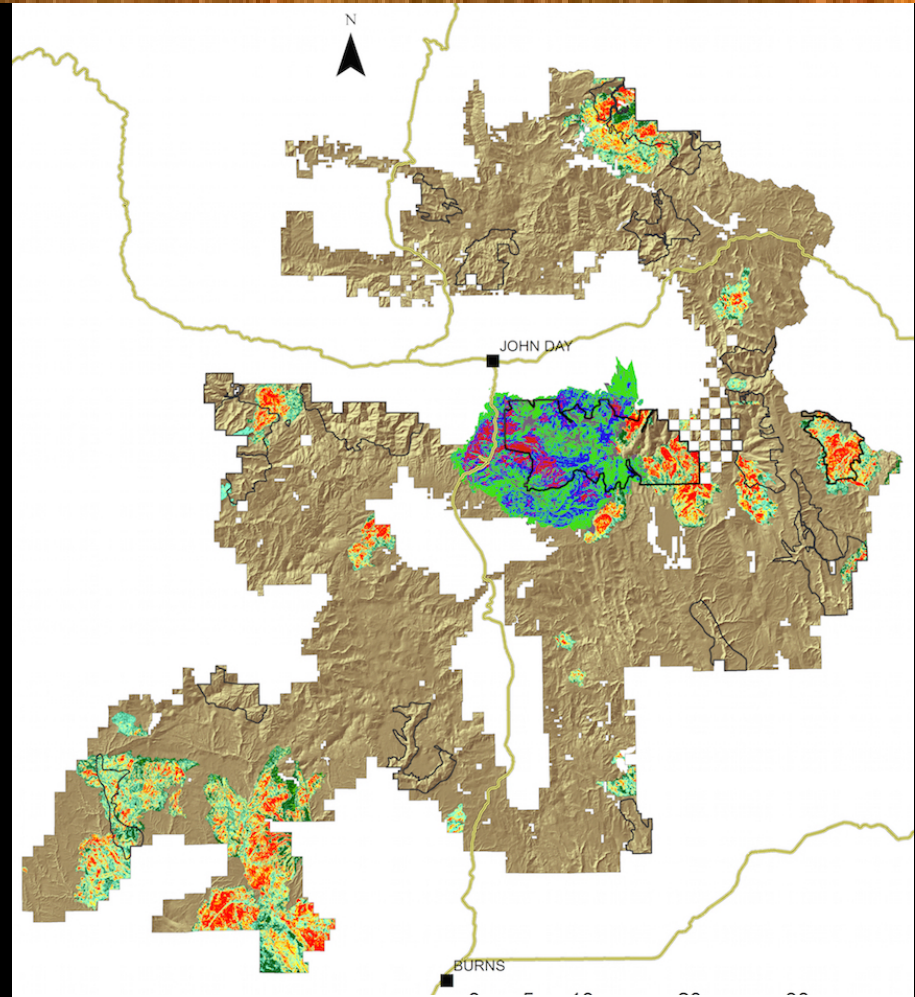
Currently

- 5,159 acres of broadcast burning in FY13
- 7,041 acres of broadcast burning in FY14
- 5,426 acres of broadcast burning in FY15



Frequent Fire Regime

- Current research on the Malheur shows a fire return interval of 12-24 years, even in moist mixed conifer stands
- Dry forest types account for approximately 1 million acres on the Malheur and have been on the frequent end of this range.
- Freely extrapolating, this translates to treating 83,000 acres per year in dry forest types alone to approximate HRV.



Fires >250 ac. 1984-2013 & partial 2015
James Johnston

The Principles

If it's a burn day, burn somewhere

Build your team





If it's a burn day

Planning, Unit Preparation

—at multiple scales, a range of complexity, and
varied biophysical settings

—Prepare to burn more than you think you can



burn somewhere



If it's a burn day

Agreements

—If it is a good burn day for you, it is for your neighbors as well



burn somewhere



If it's a burn day

Smoke

- Get involved with the Oregon Prescribed fire council
- Work to get collaborative and local support when changes are needed
- Be prepared to be flexible



burn somewhere



If it's a burn day

Communication and Outreach
—Internally and Externally



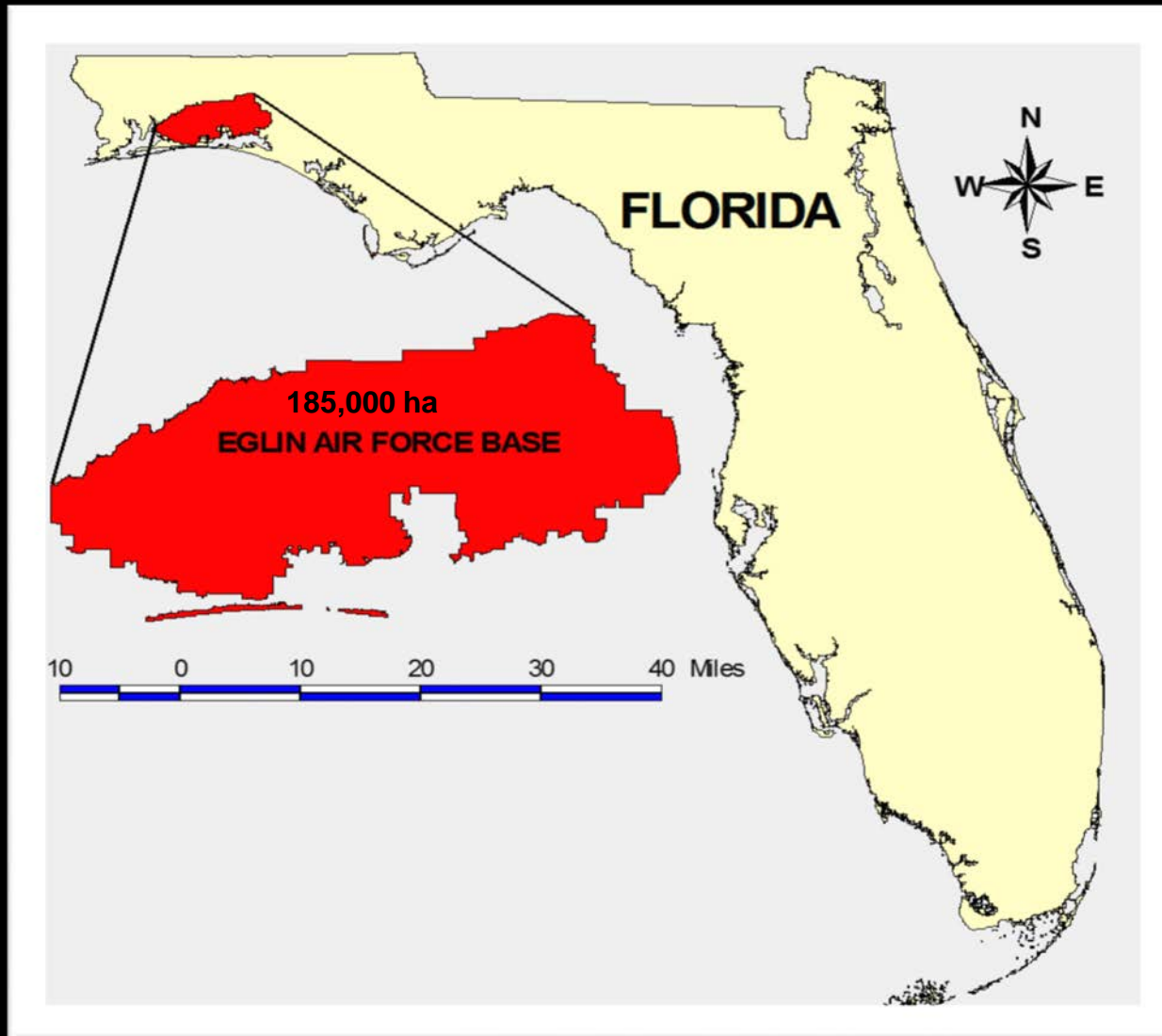
burn somewhere



Build Your Team

Integrated Implementation Planning

Eglin AFB: A Case Study





The Problem

- Prior to 2001, 30-year average Rx fire acreage was approximately 38,000/yr.
- Resources spread too thin and few conservation objectives were being met.



A New Approach

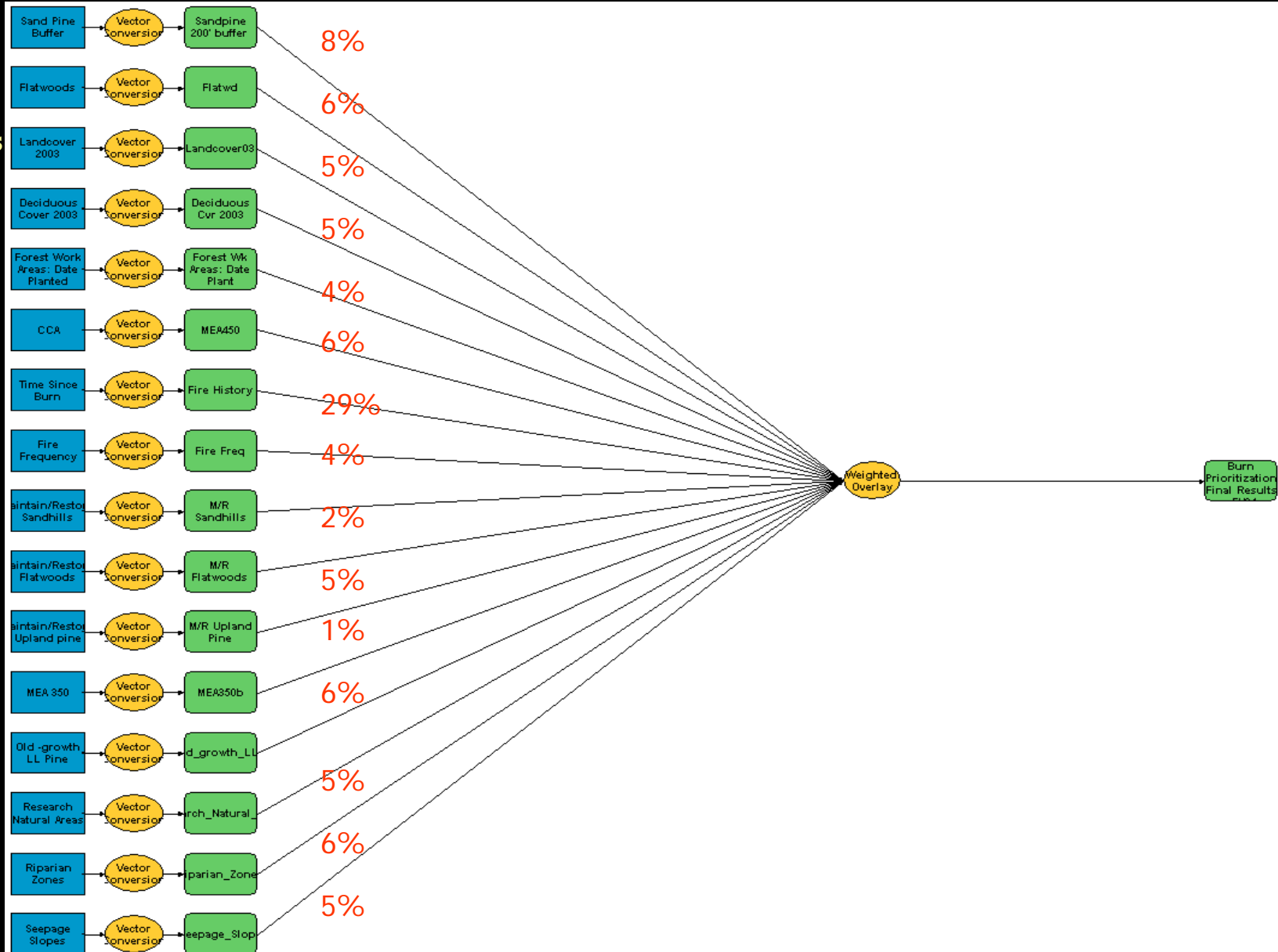
- Targeted burning was needed to maintain value of highest priority areas
- Targeting burning makes burning priority areas easier over time.
- Easier burning increases burning capacity by widening prescription windows and increasing burn block size.

Burn Prioritization Process

The model was developed to prioritize the limited prescribed fire resources across the landscape to areas where fire is most needed.

The Model

Sand Pine
Encroachment
High Site Index
Landcover Class
Oak Cover
Forestry Areas
Core Area for Conservation
Time Since Fire
Fire Frequency
Ecol. Condition-- Sandhills
Ecol. Condition-- Flatwoods
Ecol. Condition-- Upland Pine
RCW Recovery
Old Growth
Natural Areas
Riparian Zones
Seepage Slopes



Priority for Fuels Treatment

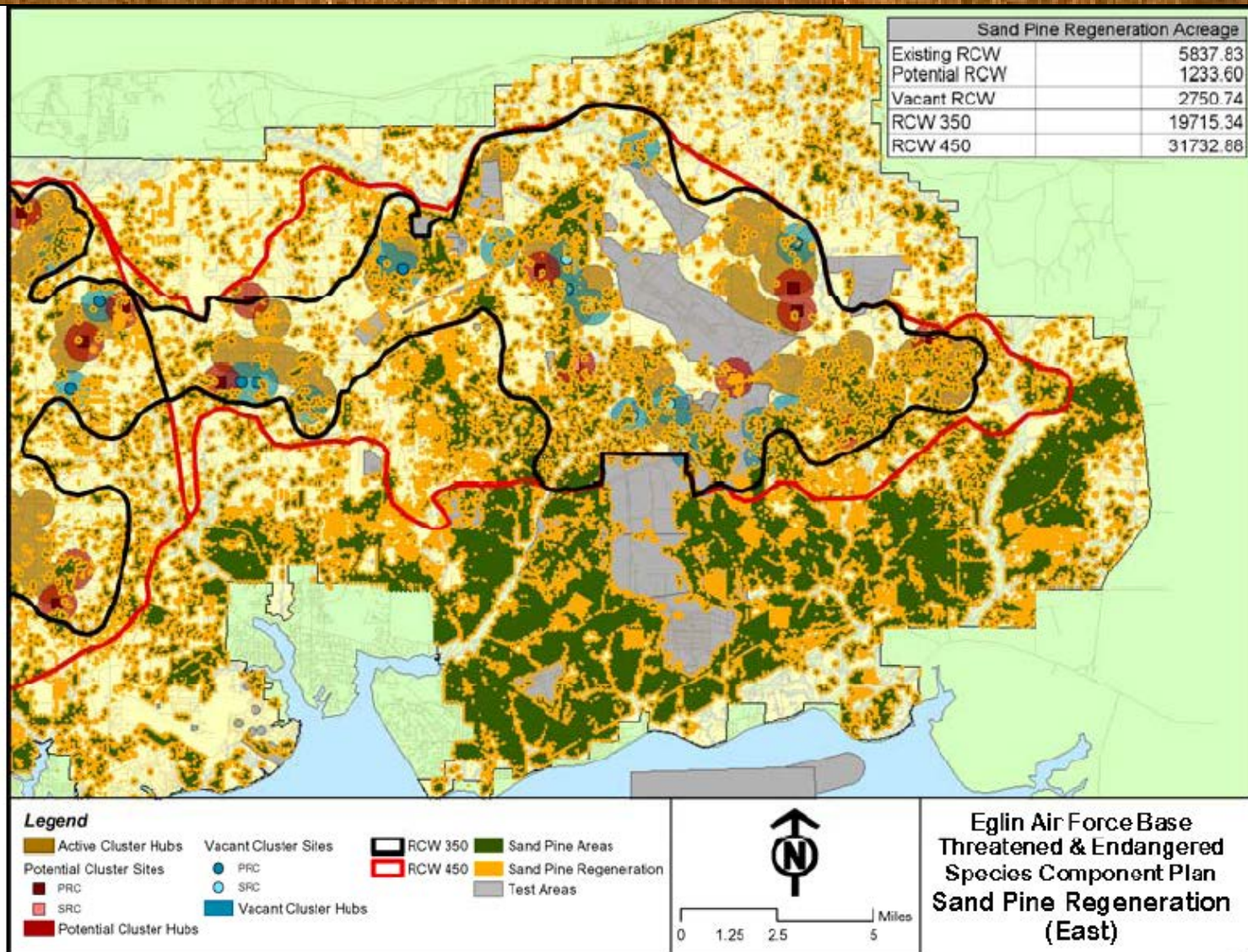
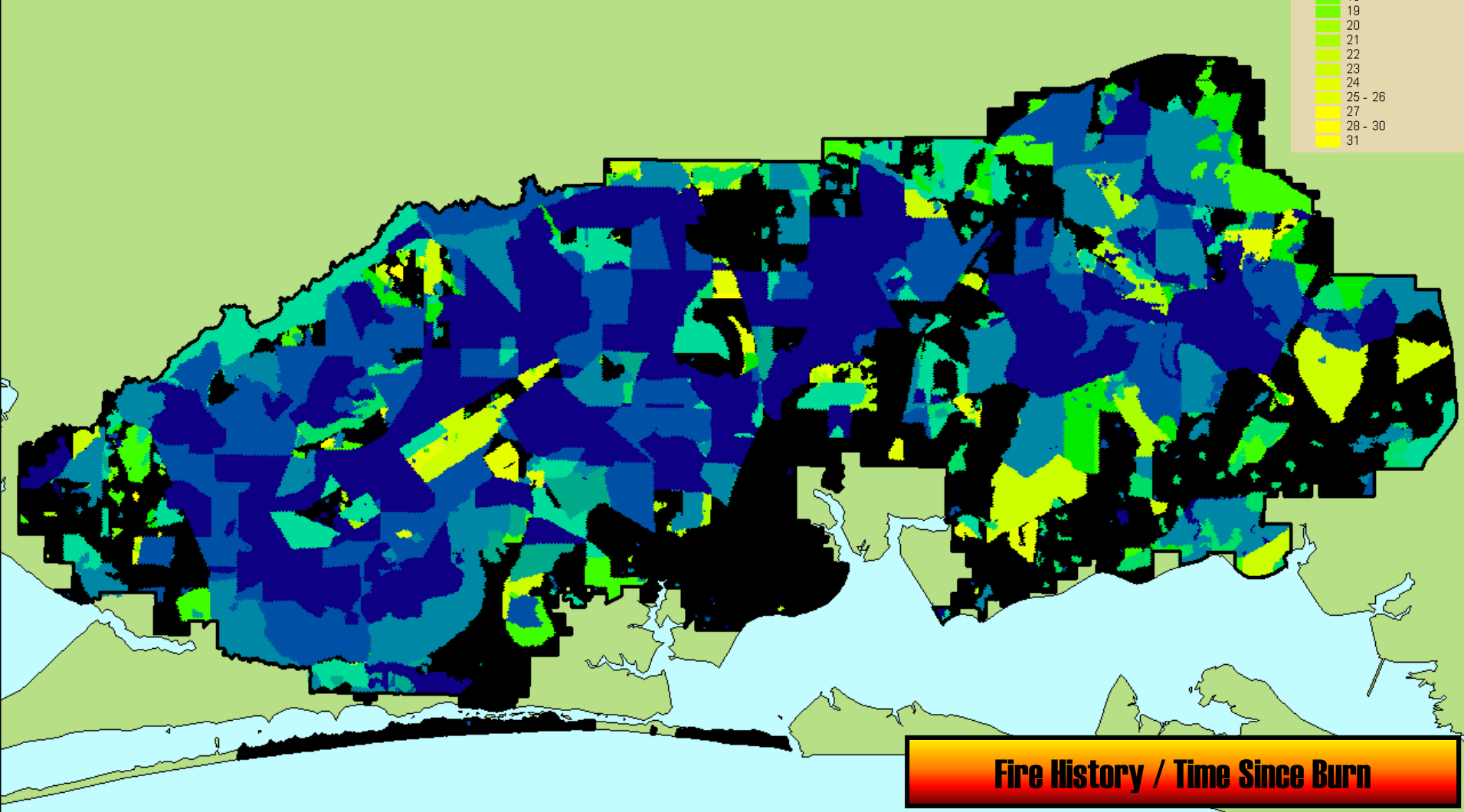
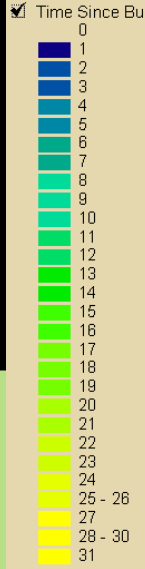
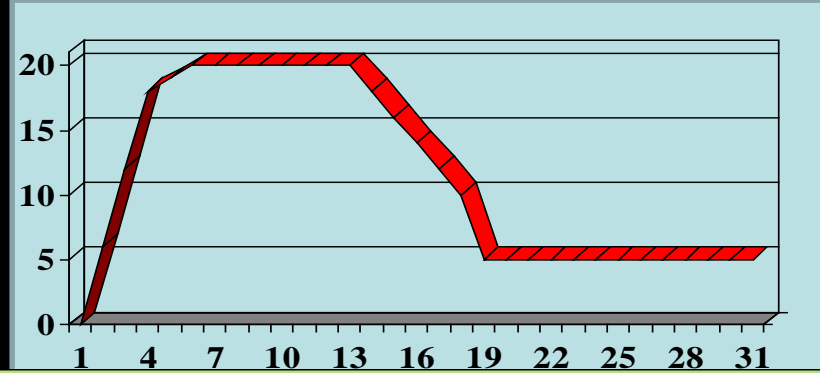
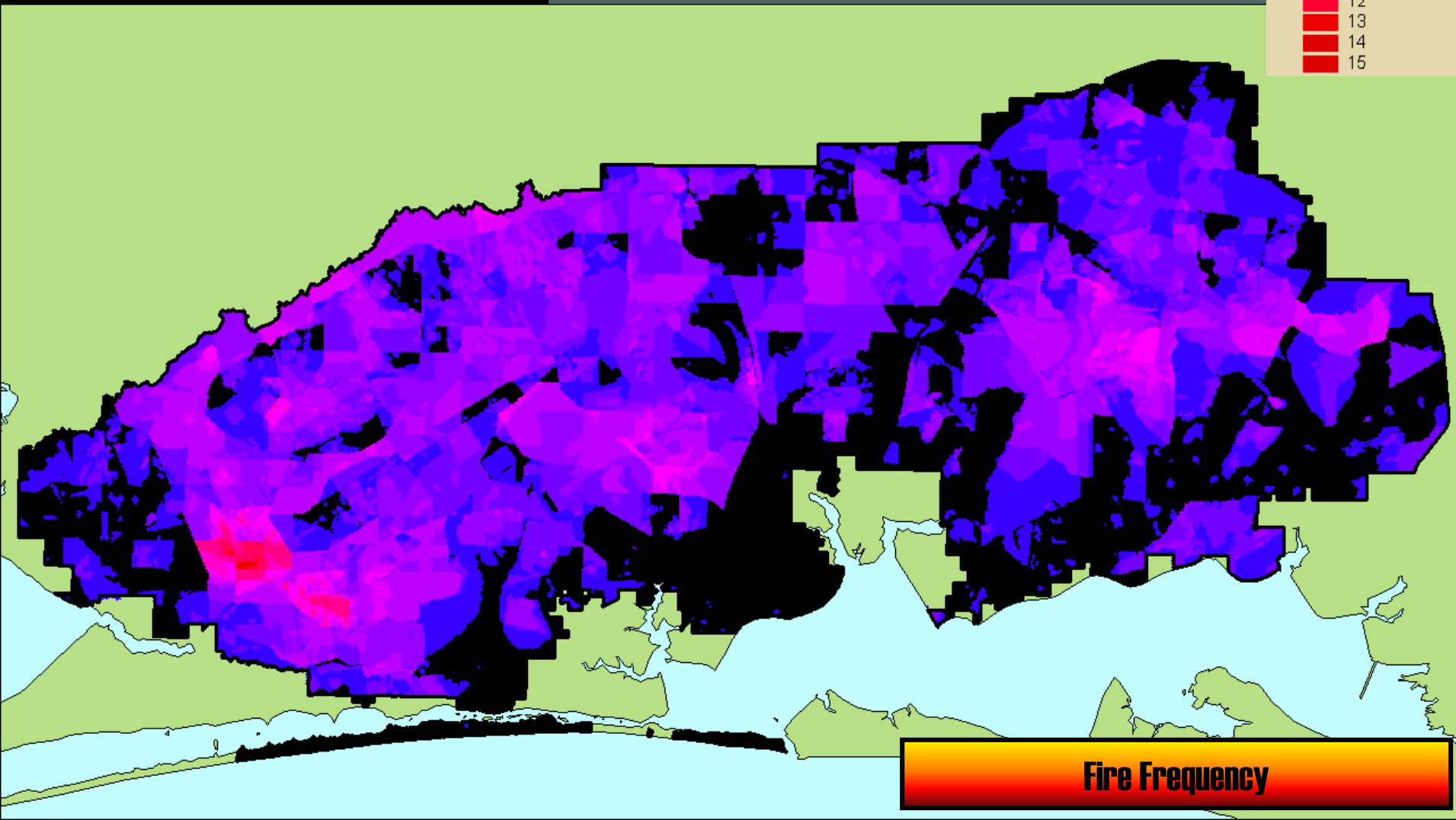
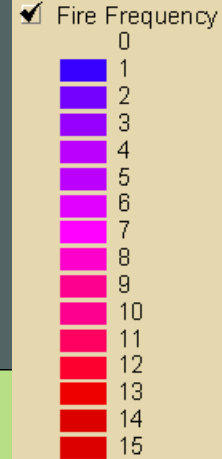
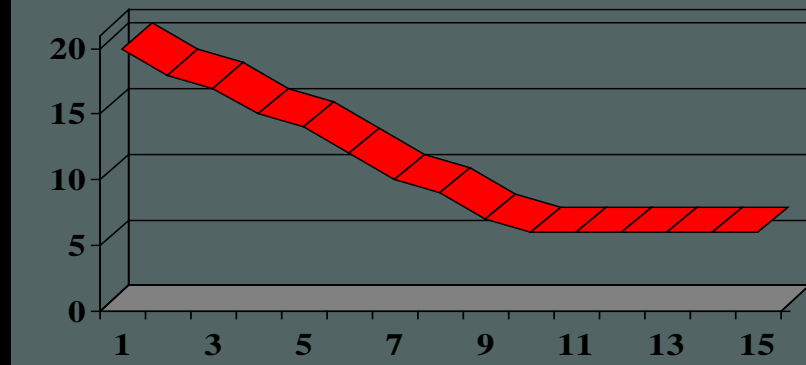
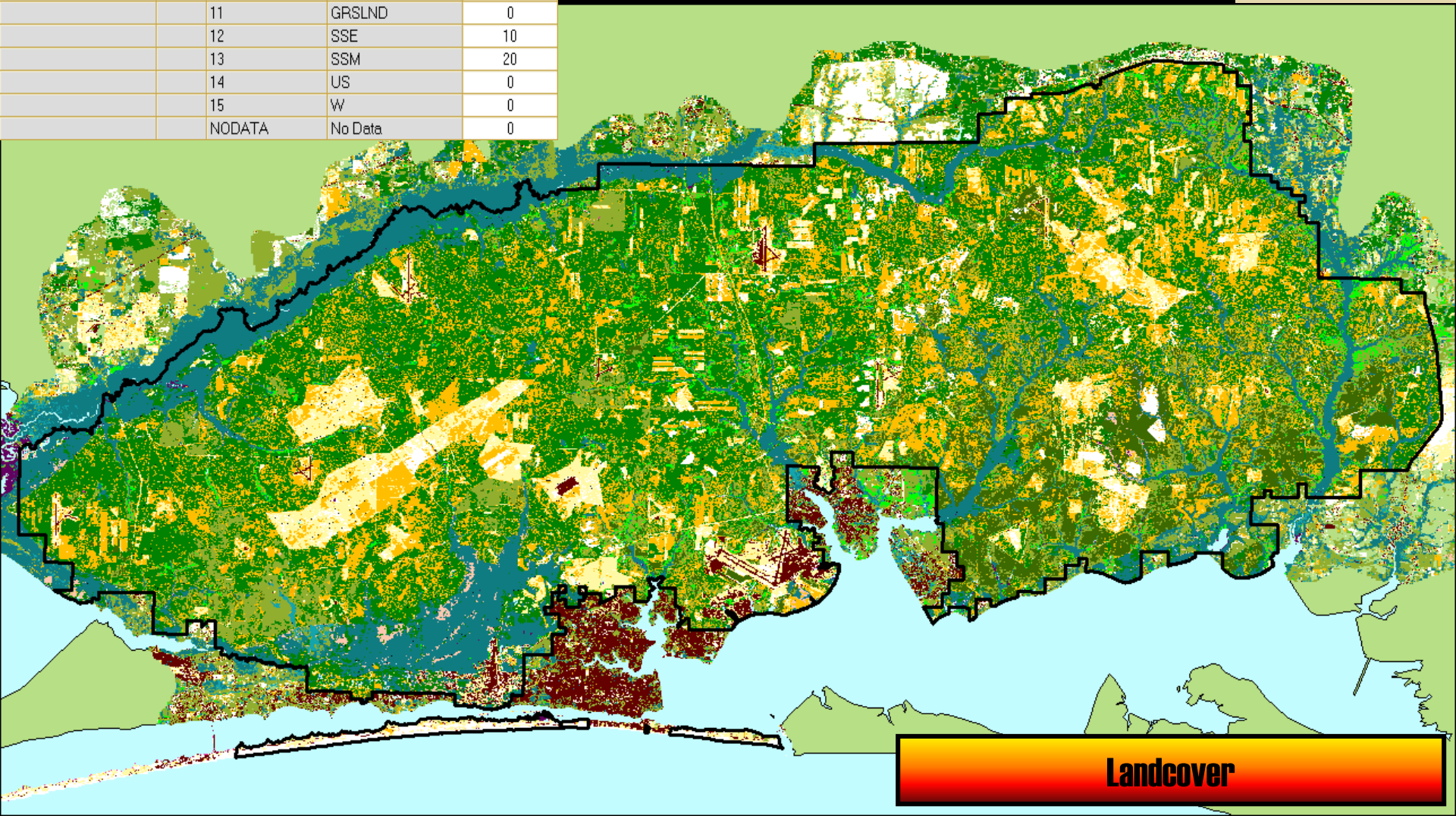
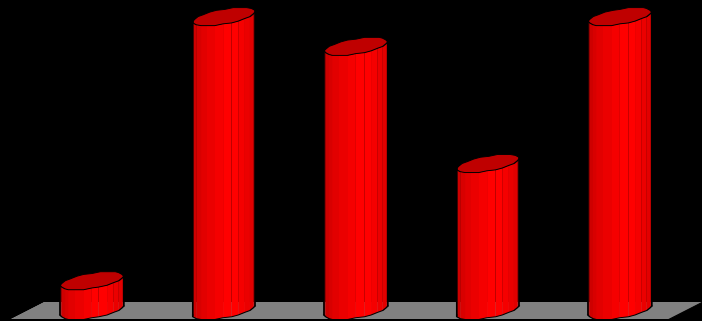


Figure 10-6b. East Side of Reservation





Input Theme	% Inf	Input Field	Input Label	Scale Value
Landcover03	4	Value		
		1	BL	0
		2	BLFD	0
		3	BLFM	0
		4	BLFSS	0
		5	DEV	0
		6	DF	2
		7	EFLL	20
		8	EFM	18
		9	EFSP	0
		10	EV	0
		11	GRSLND	0
		12	SSE	10
		13	SSM	20
		14	US	0
		15	W	0
		NODATA	No Data	0



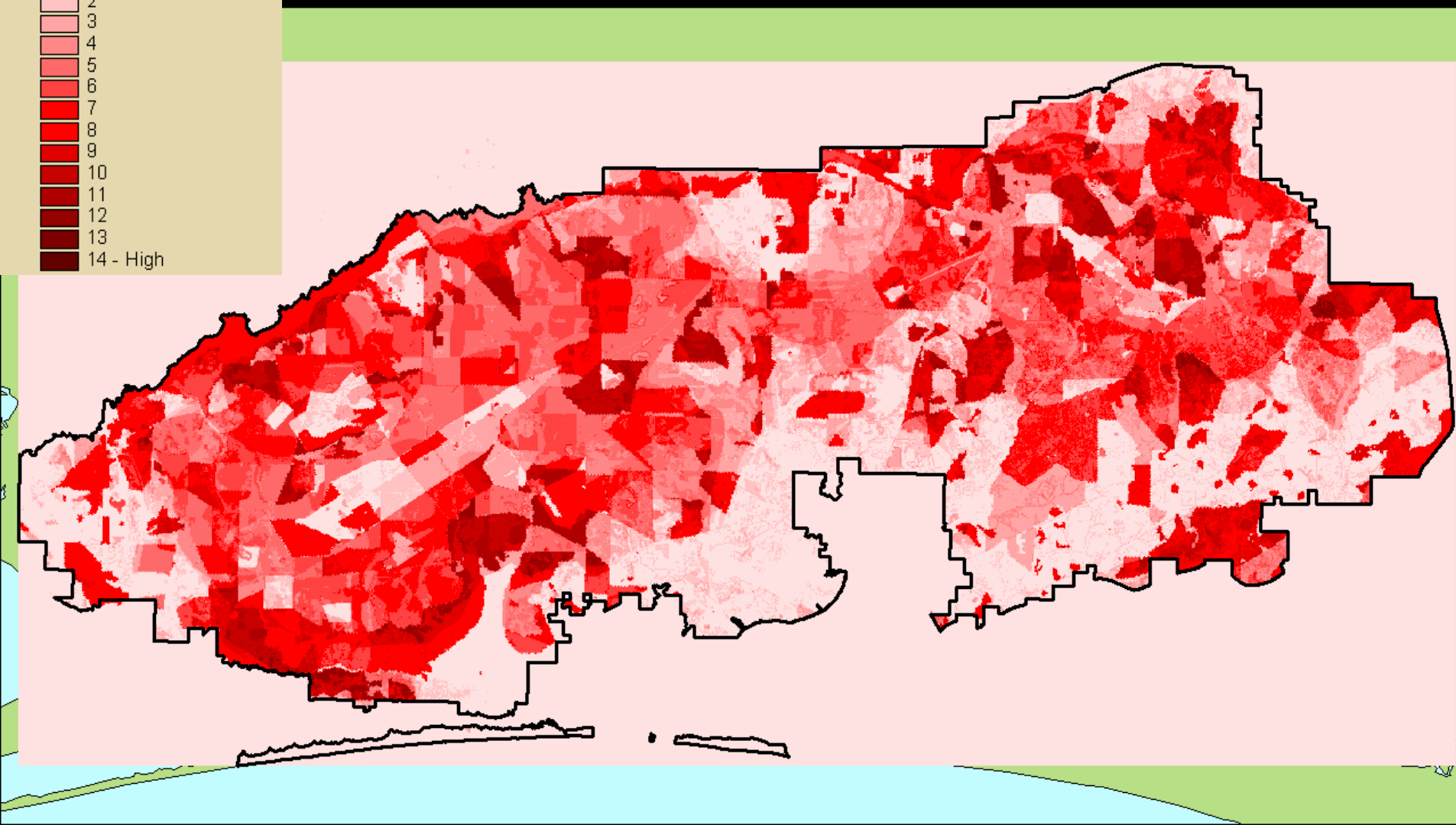
Landcover

Results

✓ Burn Prioritization Final Res

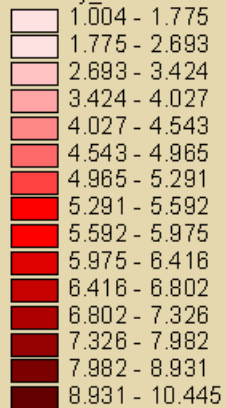


30 m scale

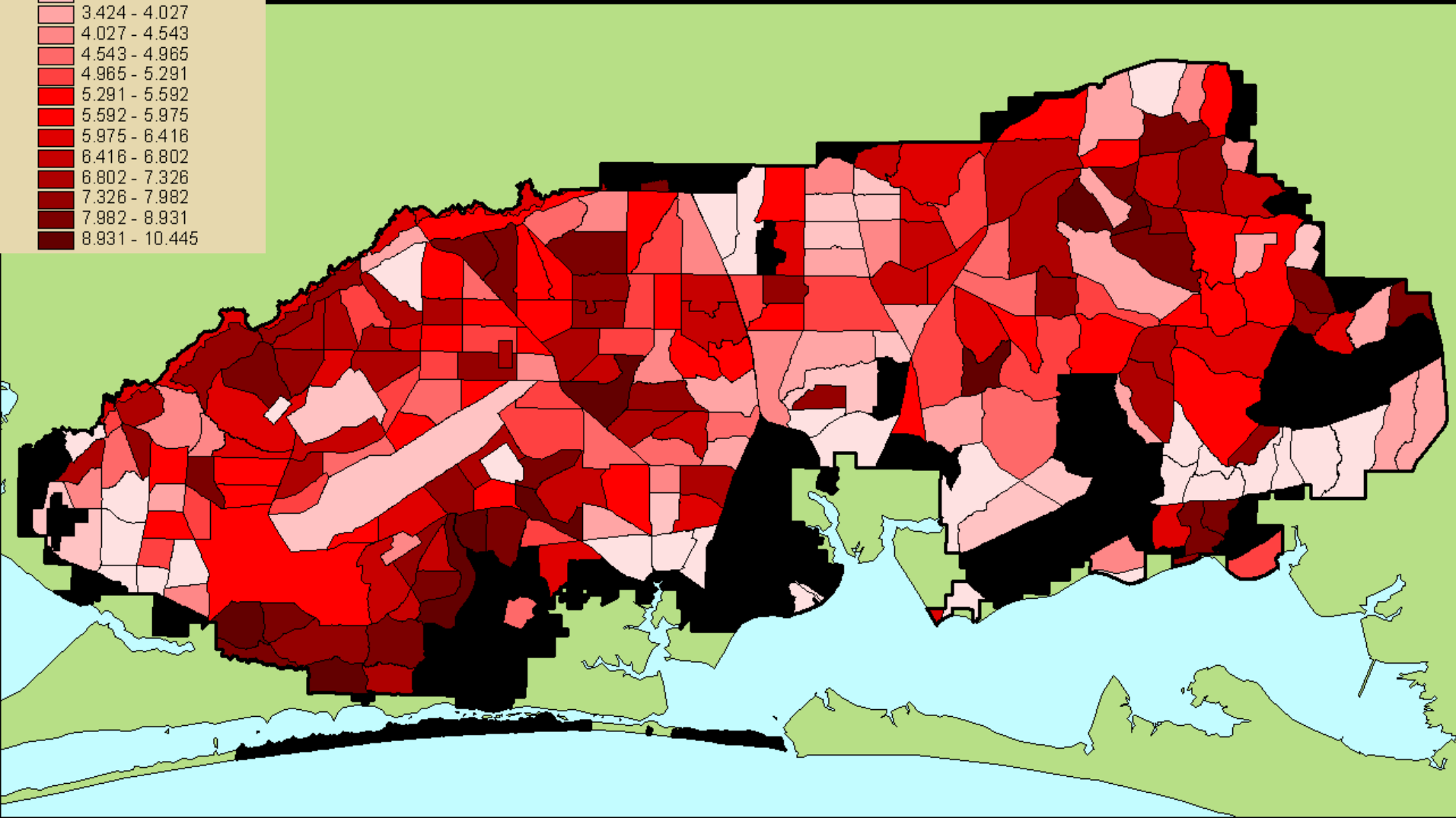


Results

✓ Primary_burnblocks.shp



Primary Burn Block Scale





POTENTIAL

NOT EVERYONE GETS TO BE AN ASTRONAUT WHEN THEY GROW UP.

Unplanned Ignitions

2009 fire policy allows for using all of the tools in the fire management toolbox for all unplanned fires—how do you gain skill in the less traditional ones?

The WFU approach offers many useful lessons for long term fire management.

- What skills do you need for a successful team?
- What internal and external relationships need attention for success?

Is it likely that you would be managing solely for resource objectives?

The Practice

If it's a burn day....

Build your team



Questions?

