

Appendix A. Maps

Table of Contents

Map 1. Management Areas	3
Map 2. Special Areas and Environmental Study Areas.....	4
Map 3. Wilderness Areas and Wild and Scenic Rivers	5
Map 4. Ecological Response Units (ERUs) and Riparian Areas	6
Map 5. Riparian Areas and Water	7
Map 6. ERUs – Desert Communities, Interior Chaparral, and Semi-Desert Grasslands	8
Map 7. ERUs – Pinyon and Juniper.....	9
Map 8. ERUs – Mixed Conifer and Ponderosa Pine.....	10
Map 9. ERUs – Great Basin Grasslands and Montane/Subalpine	11
Map 10. ERUs – Alpine Tundra and Spruce-Fir Forest	12
Map 11. Sedona Land Adjustments – Base-for-Exchange Priority Acquisition Lands	13
Map 12. Recreation Opportunity Spectrum	14
Map 13. Scenery Management – Scenic Integrity Objectives	15
Map 14. Scenery Management – Scenic Integrity Objectives Rehabilitation.....	16
Map 15. Seasonal Closures	17
Map 16. Timber Suitability	18
Map 17. Livestock Grazing.....	19
Map 18. Recreation Suitability: New Motorized Areas	20
Map 19. Recreation Suitability: Permanent Roads	21
Map 20. Recreation Suitability: Temporary Roads.....	22
Map 21. Recreation Suitability: Motorized Trails	23
Map 22. Recreation Suitability: Mechanized Travel	24

Maps identifying Terrestrial Ecosystem Response Units (ERUs) and Riparian Areas are provided at a coarse scale. Given the variability of the landscape, in instances where the mapped Terrestrial Ecosystem Response Units (ERUs) and Riparian Areas do not correspond to the vegetation type of a given area, management activities are to be governed by the plan components from the descriptions for Terrestrial ERUs and Riparian Areas that most accurately depict the on-the-ground vegetation type.

Maps displaying the Recreation Opportunity Spectrum (ROS) and Scenic Integrity Objectives (SIO) are provided at the landscape scale. These boundaries are to be used as a framework for management activities and may require flexibility at the ground level to address site-specific conditions and anomalies that are not exact matches with the specific ROS or SIO designation. These types of situations may require field expertise and judgment to identify an area's ROS or SIO designation and may need to be adjusted to meet site-specific conditions.

For printing: Maps 1 to 4 are formatted to be printed on paper sized at 11 x 17 inches. For printers limited to sheets sized at 8½ x 11 inches, the appropriate settings (e.g., “Fit to Page”) will need to be adjusted to ensure that these maps are plotted successfully to your printer.

Key to Recurring Map Symbols



Coconino NF Boundary



Areas of Other Ownership



Cities

Major Roads



Interstate Highway



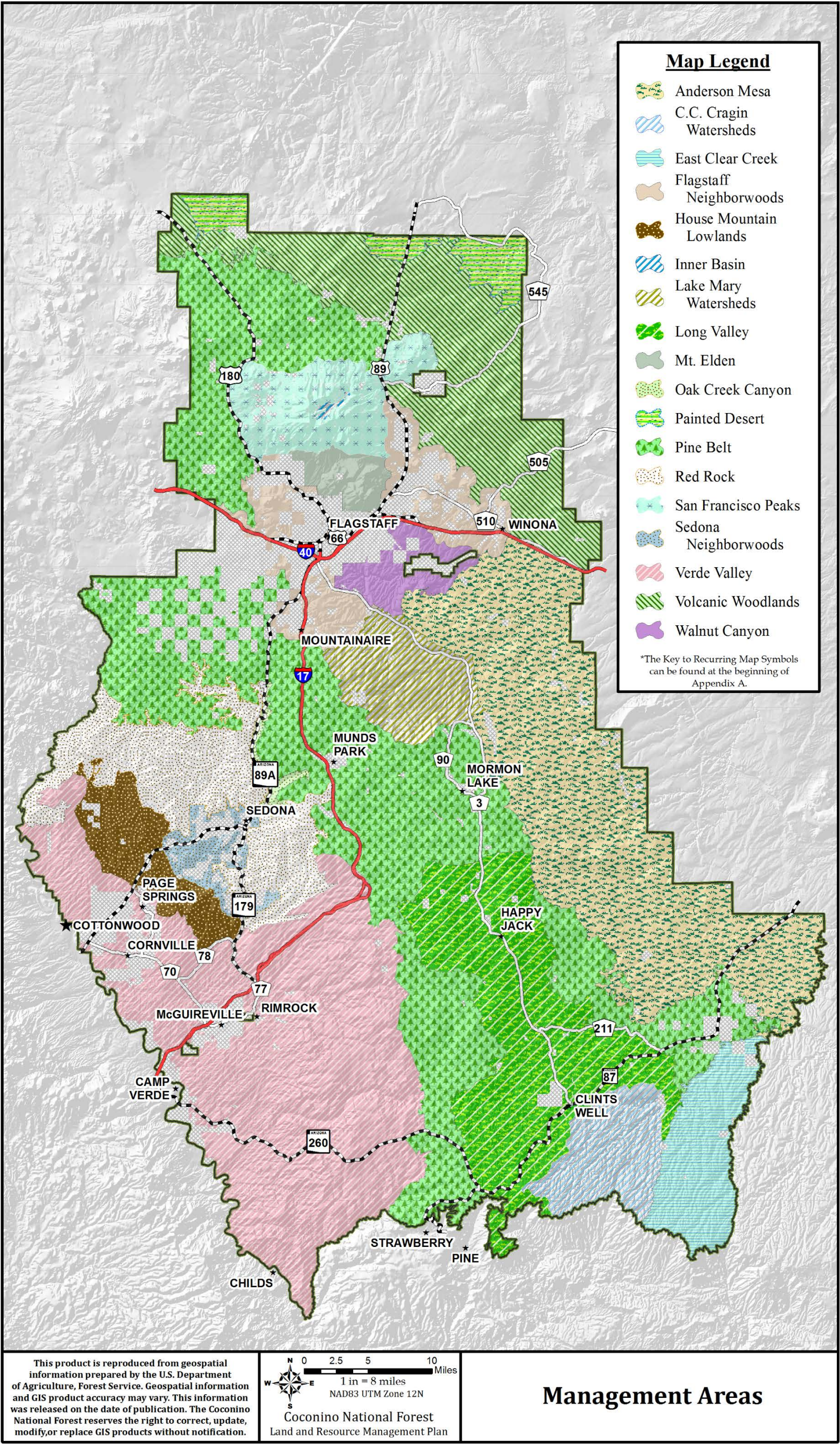
US Highway



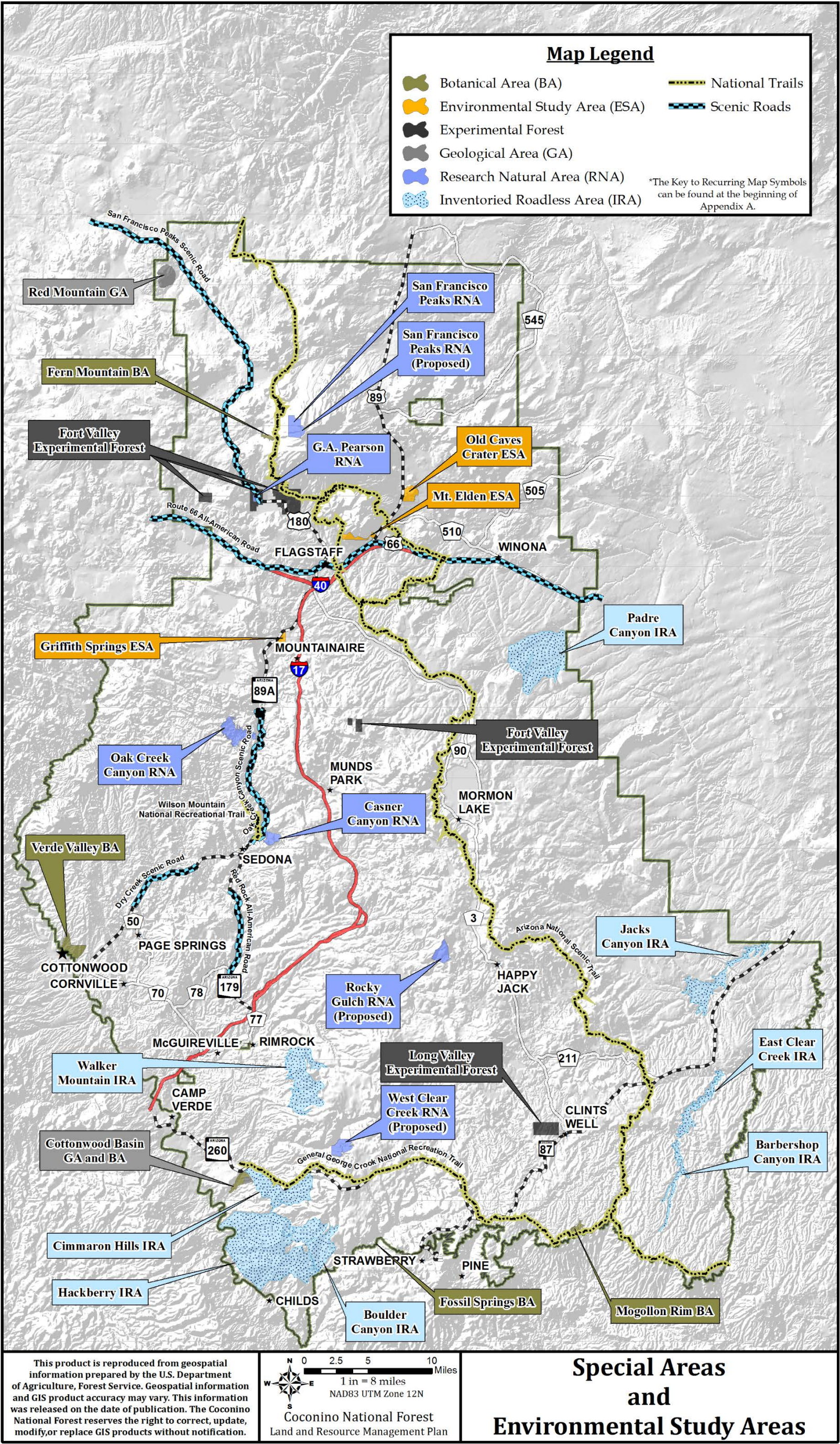
Arizona Highway



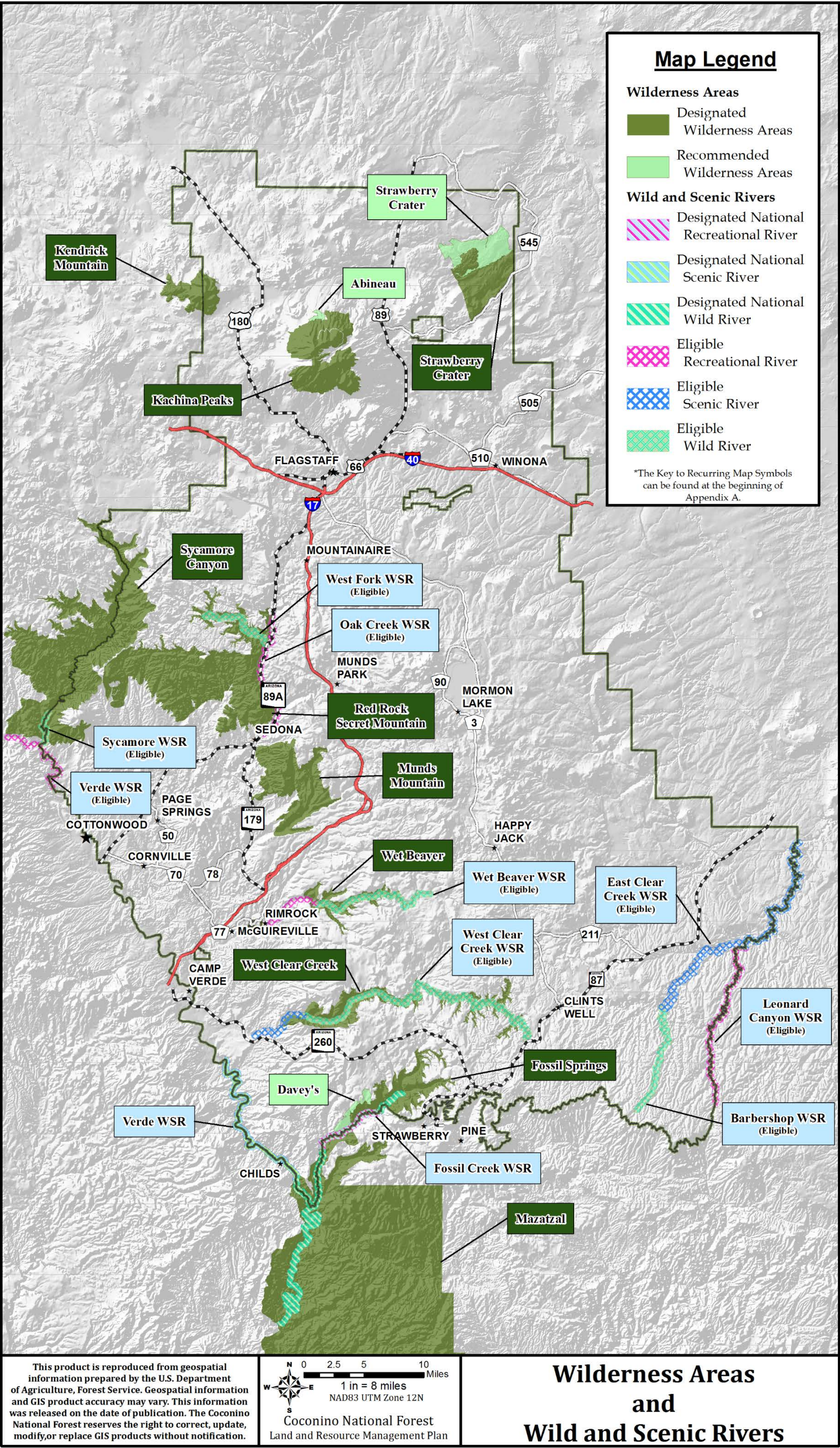
County Road



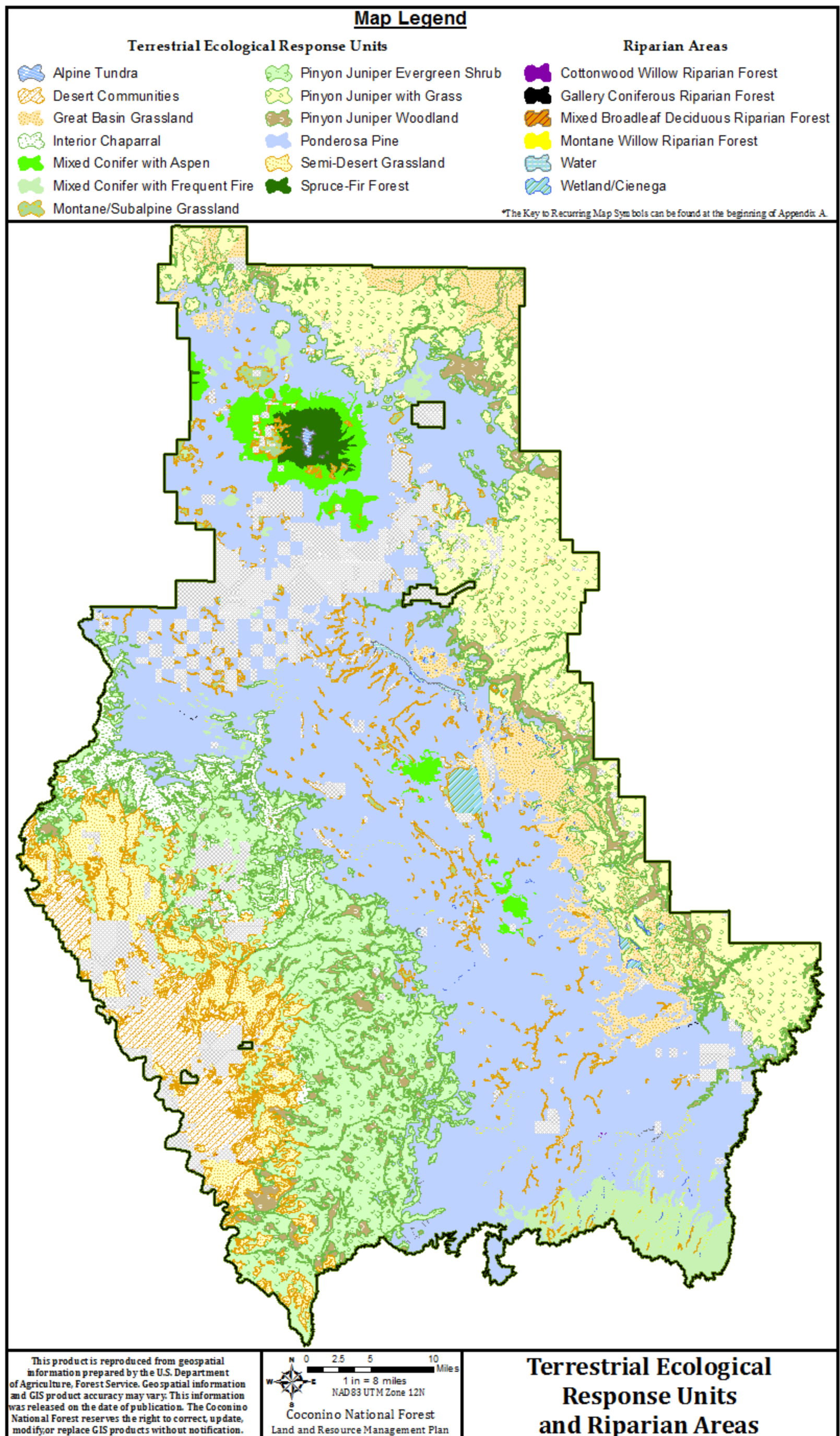
Map 1. Management Areas



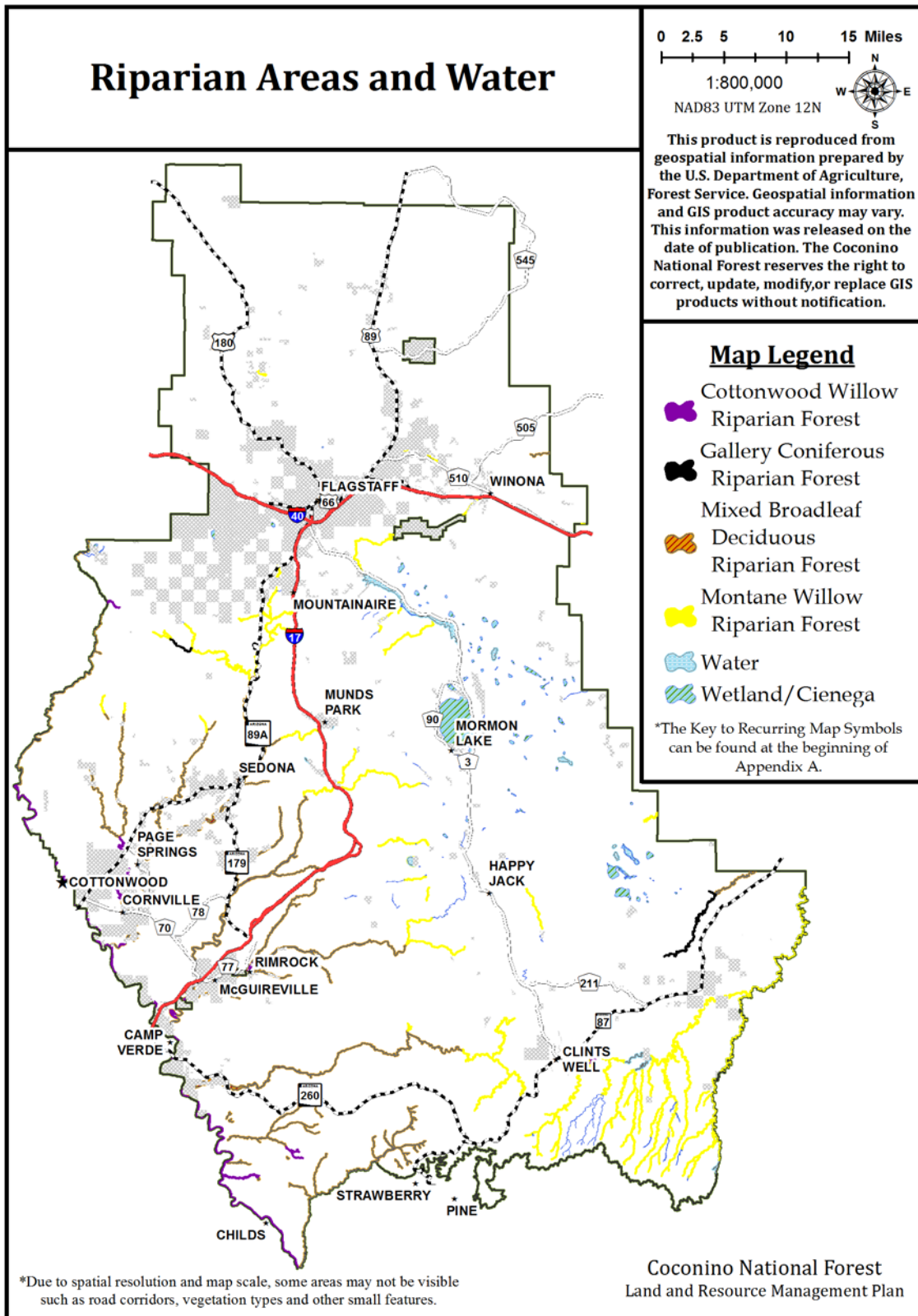
Map 2. Special Areas and Environmental Study Areas



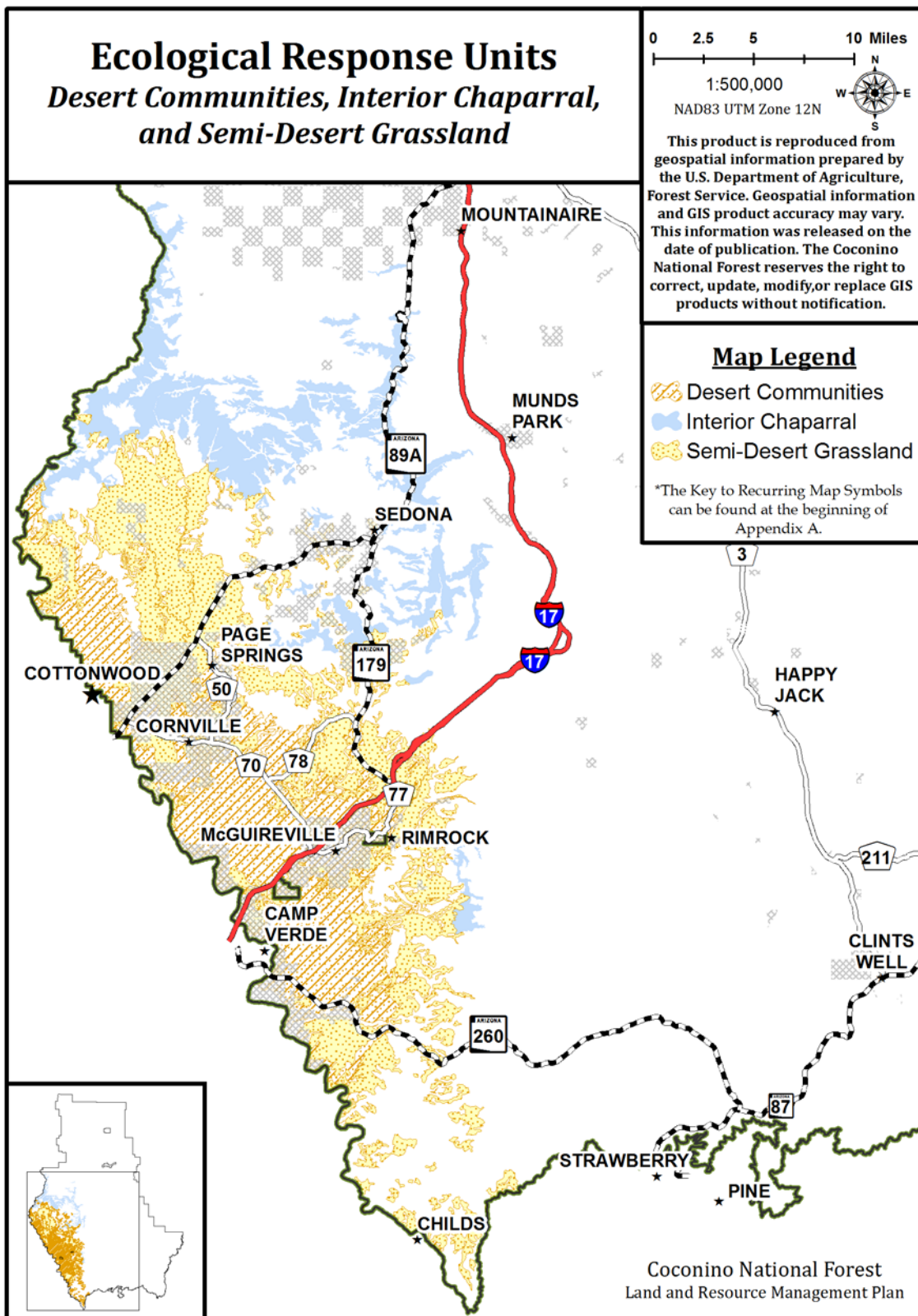
Map 3. Wilderness Areas and Wild and Scenic Rivers



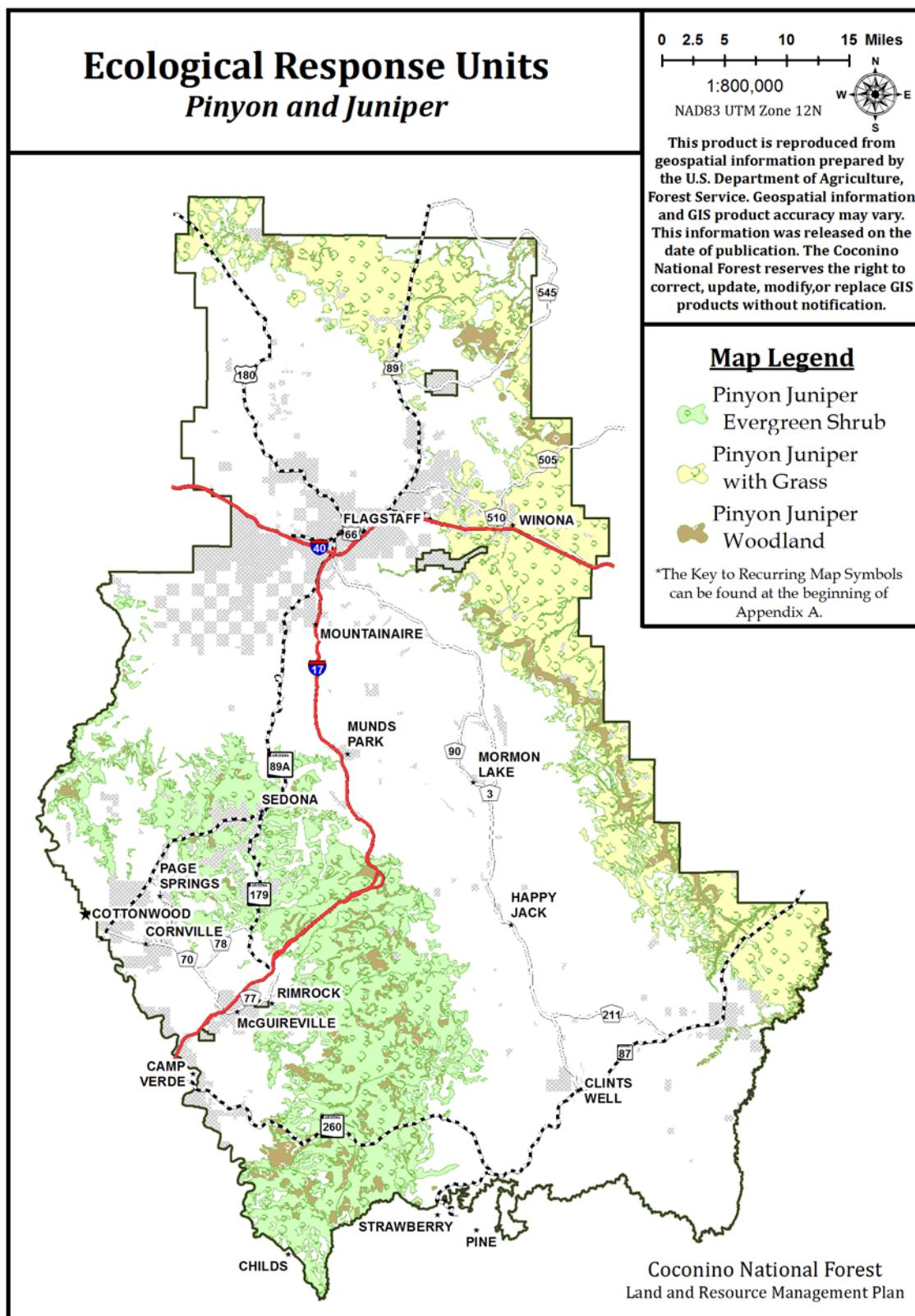
Map 4. Ecological Response Units (ERUs) and Riparian Areas



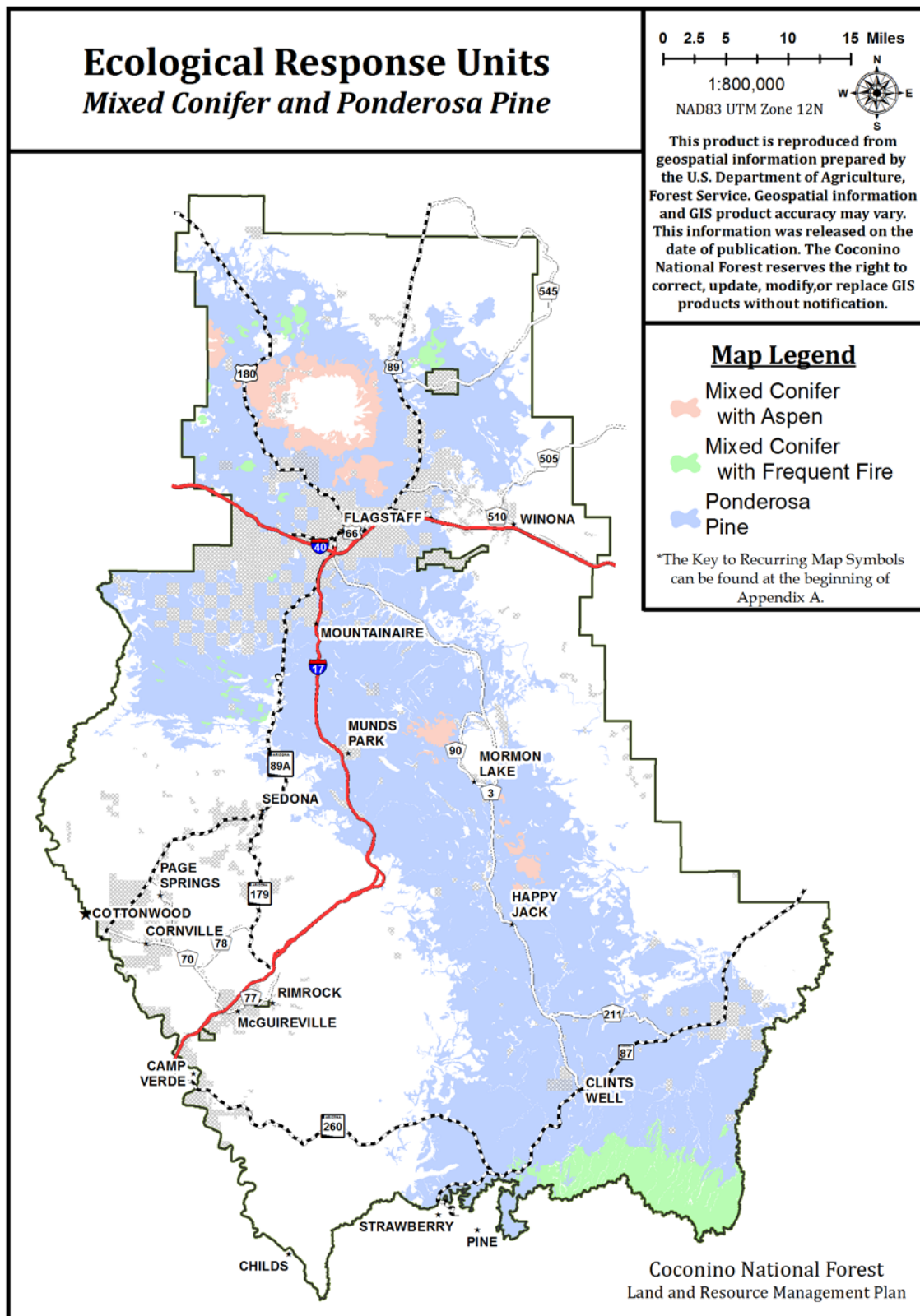
Map 5. Riparian Areas and Water



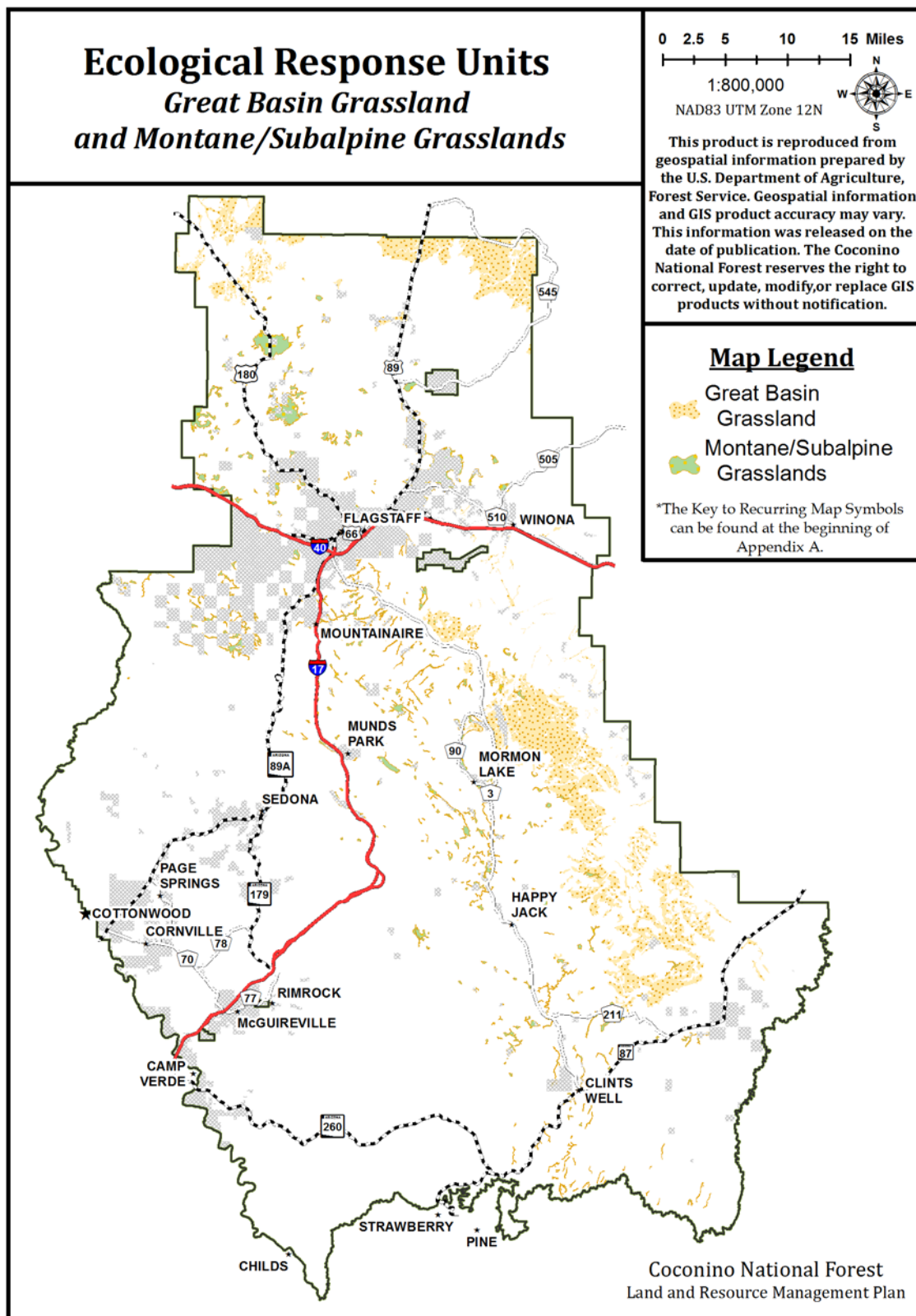
Map 6. ERUs – Desert Communities, Interior Chaparral, and Semi-Desert Grasslands



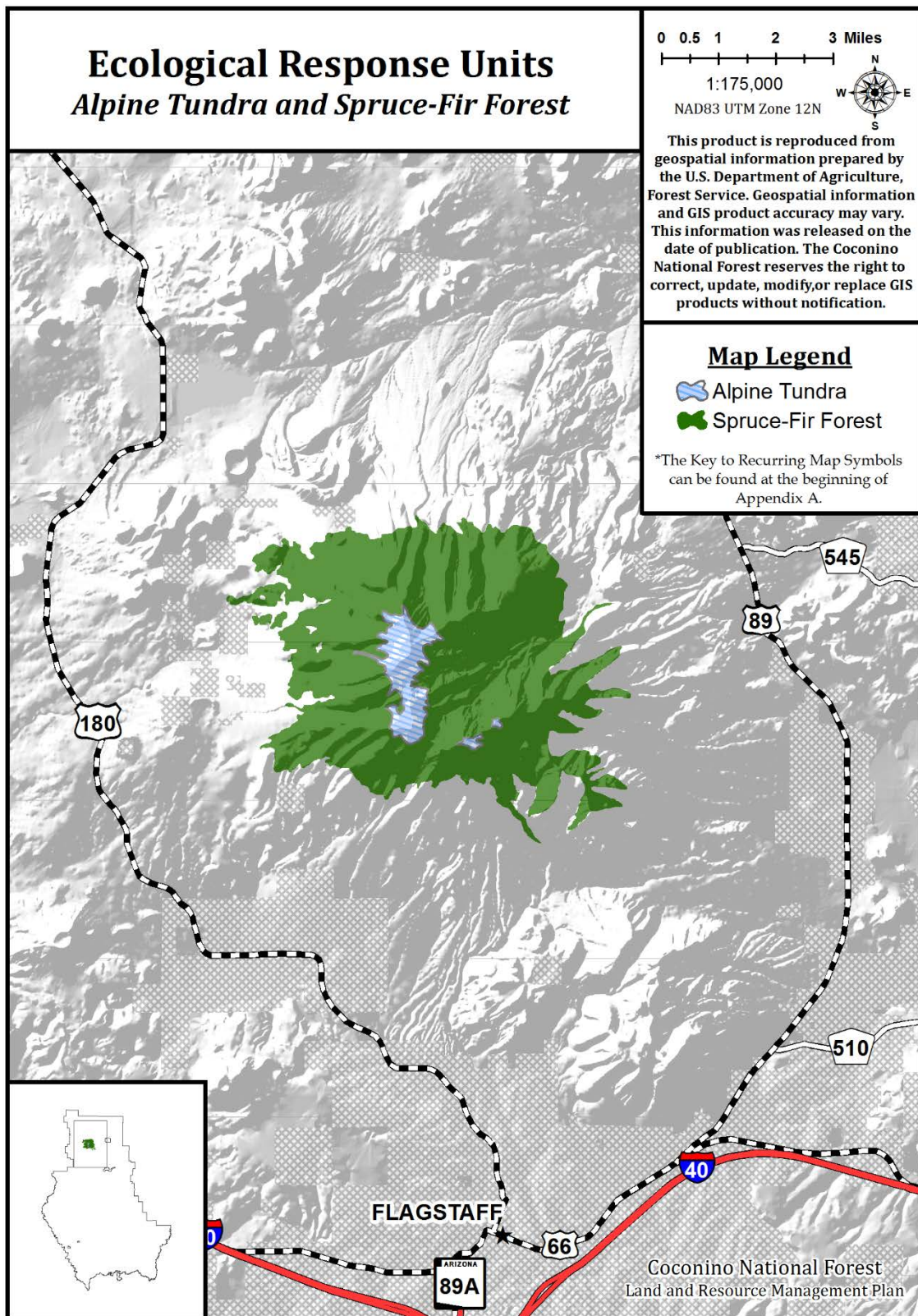
Map 7. ERUs – Pinyon and Juniper



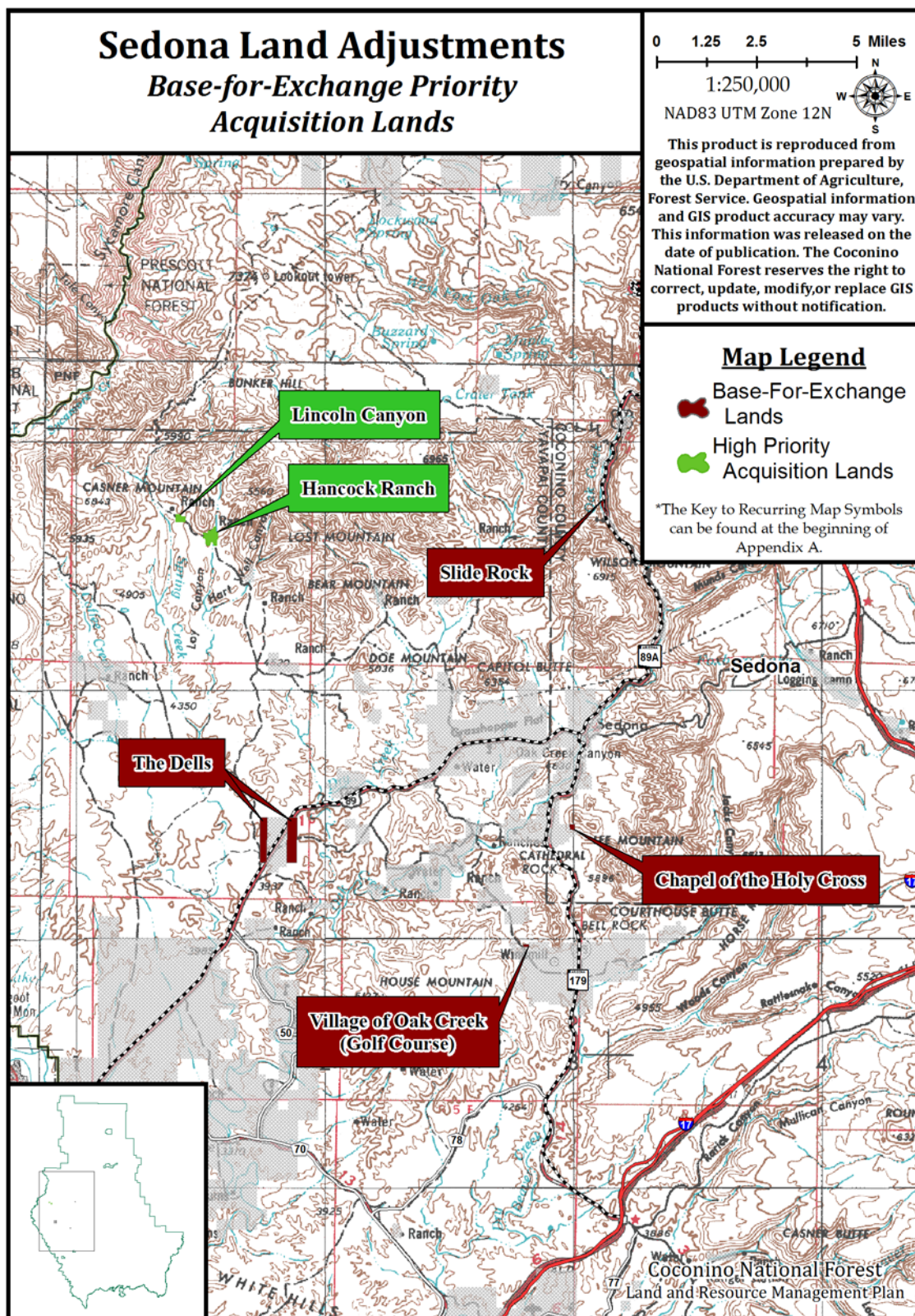
Map 8. ERUs – Mixed Conifer and Ponderosa Pine



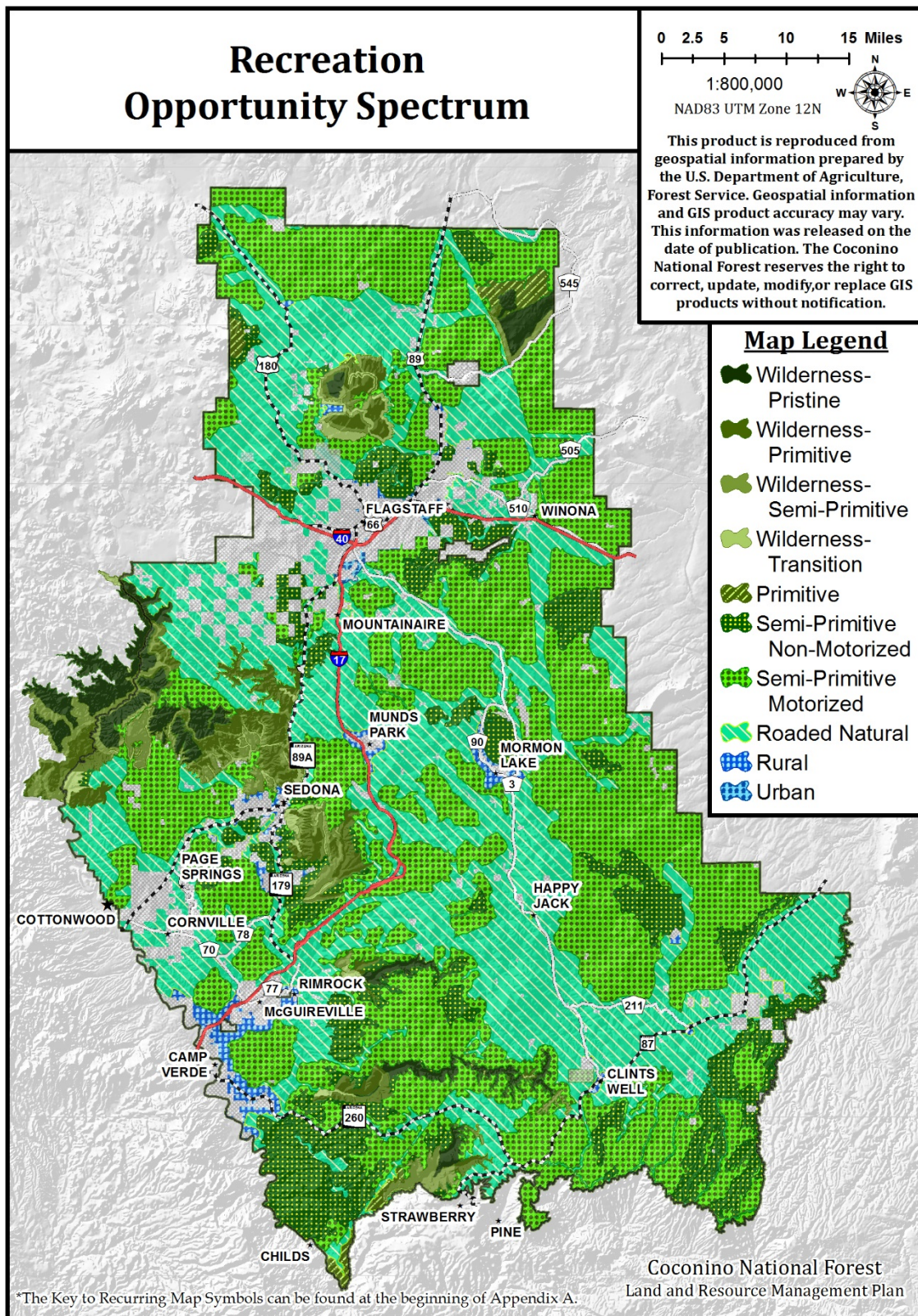
Map 9. ERUs – Great Basin Grasslands and Montane/Subalpine



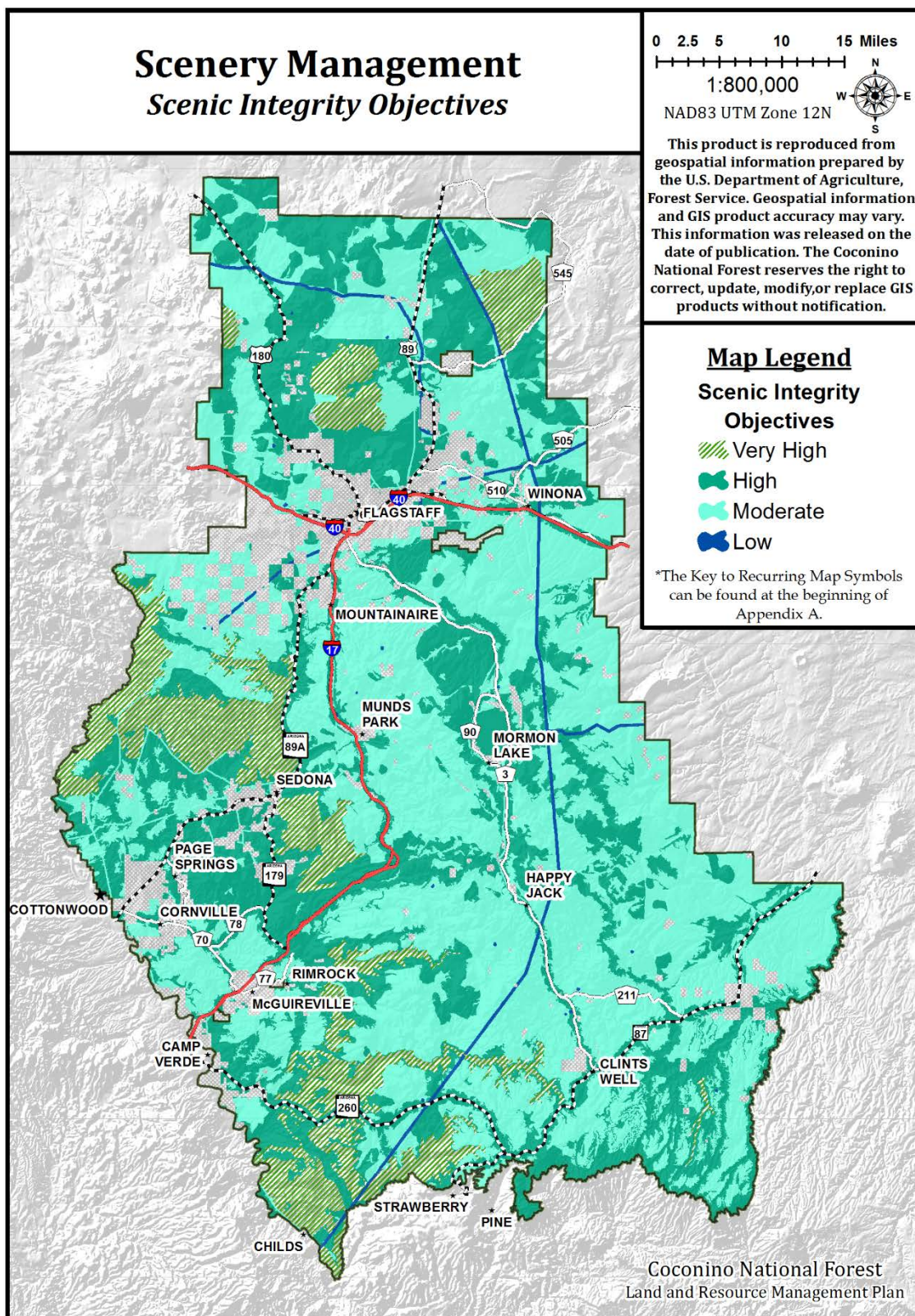
Map 10. ERUs – Alpine Tundra and Spruce-Fir Forest



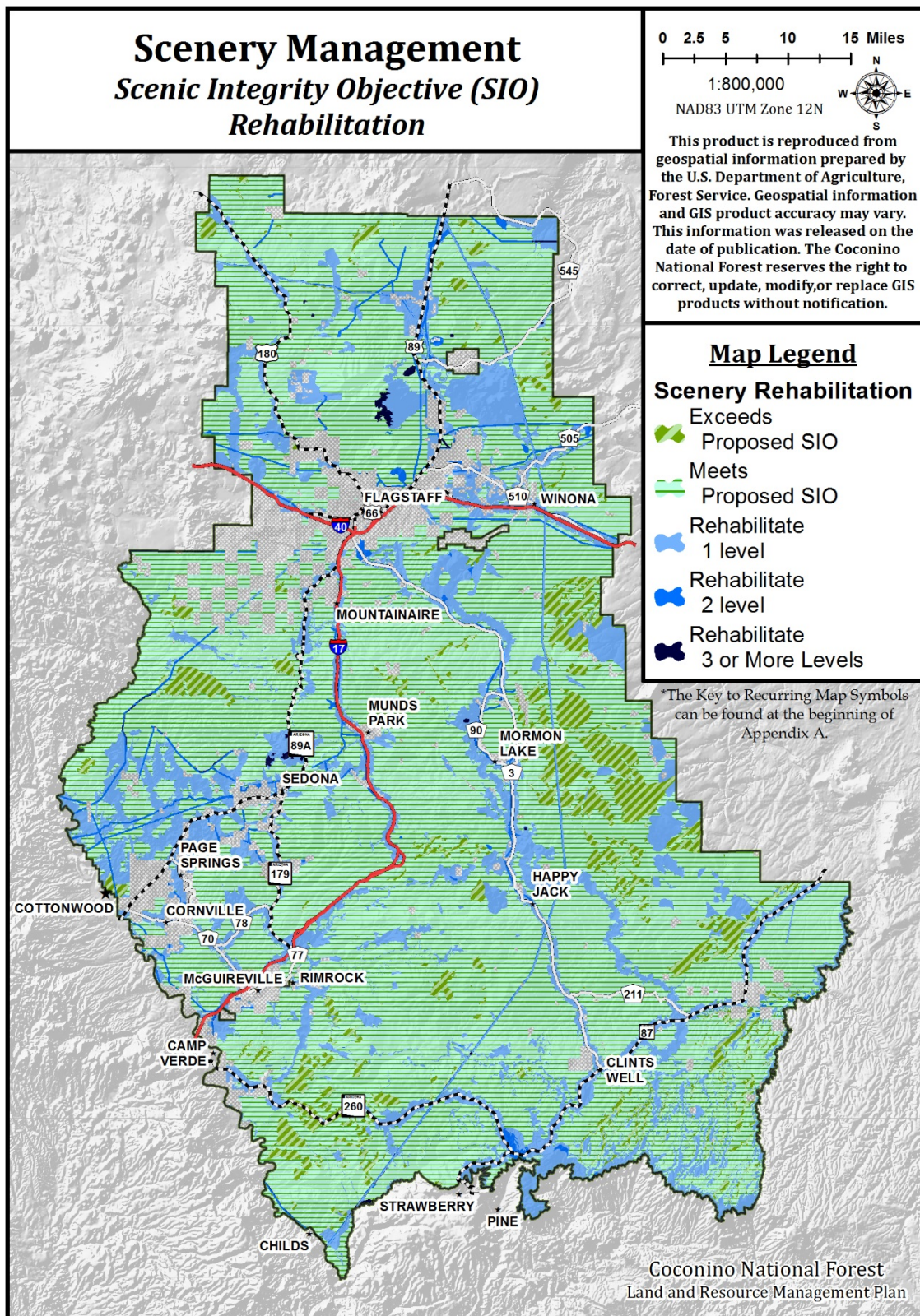
Map 11. Sedona Land Adjustments – Base-for-Exchange Priority Acquisition Lands



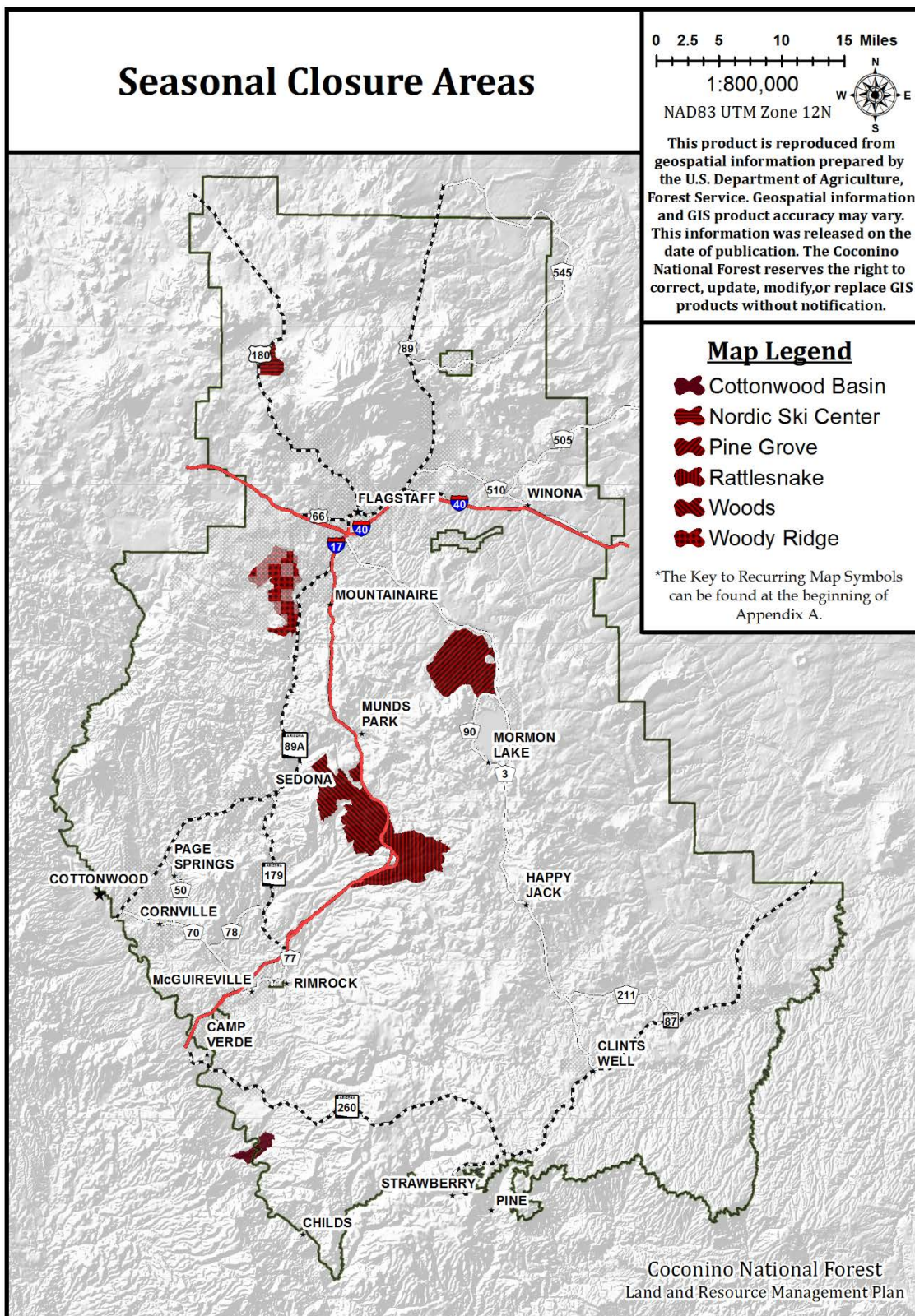
Map 12. Recreation Opportunity Spectrum



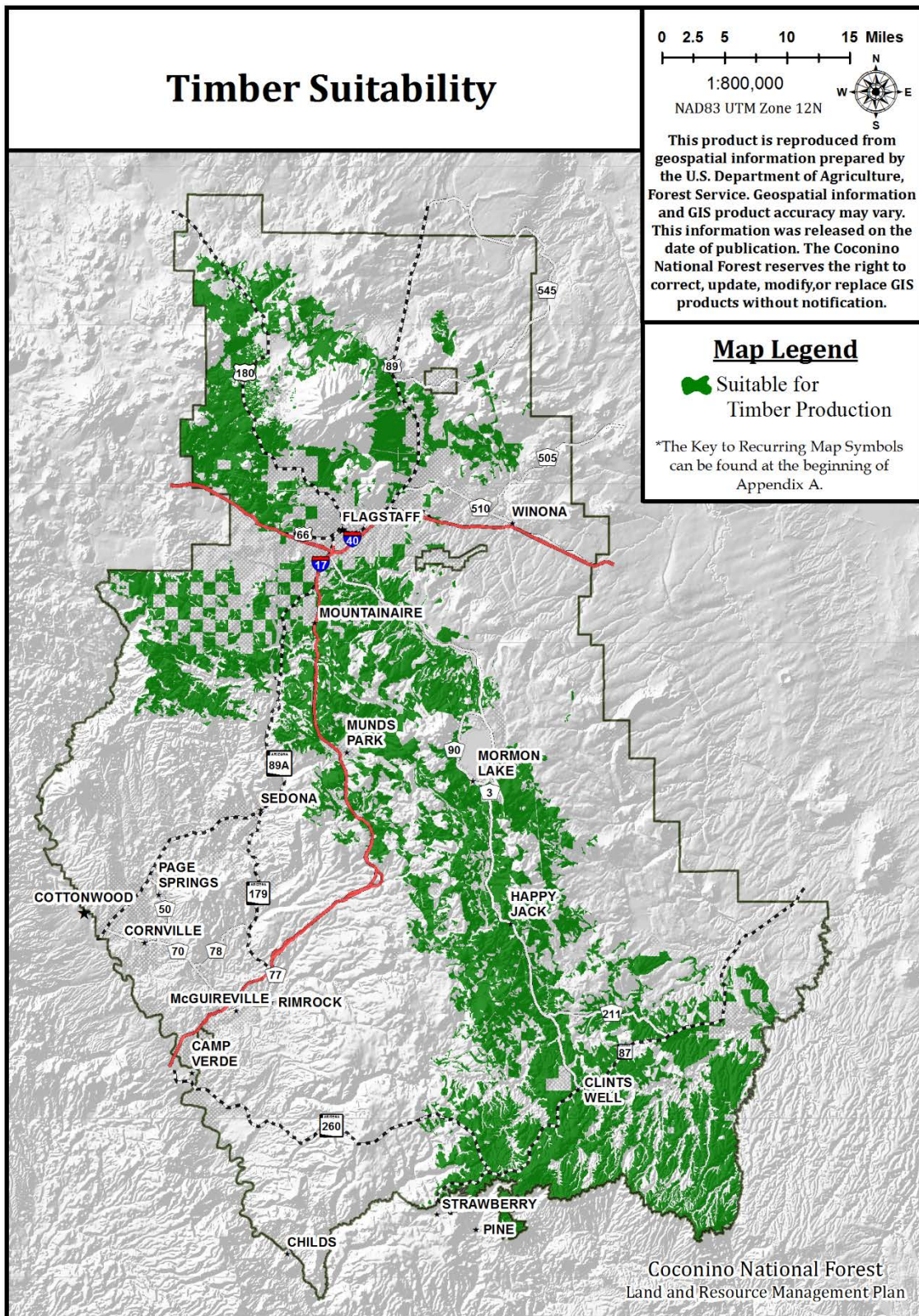
Map 13. Scenery Management – Scenic Integrity Objectives



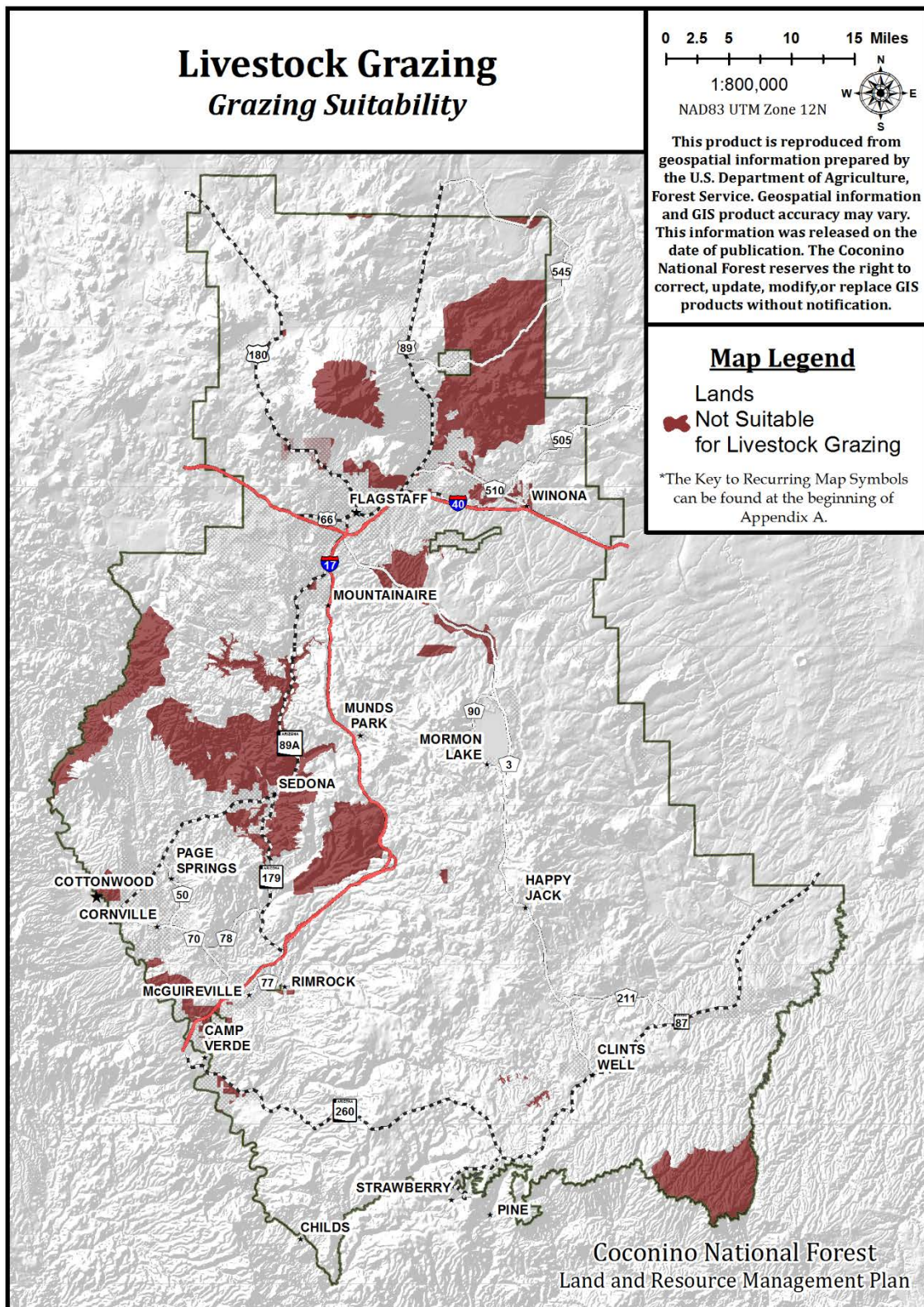
Map 14. Scenery Management – Scenic Integrity Objectives Rehabilitation



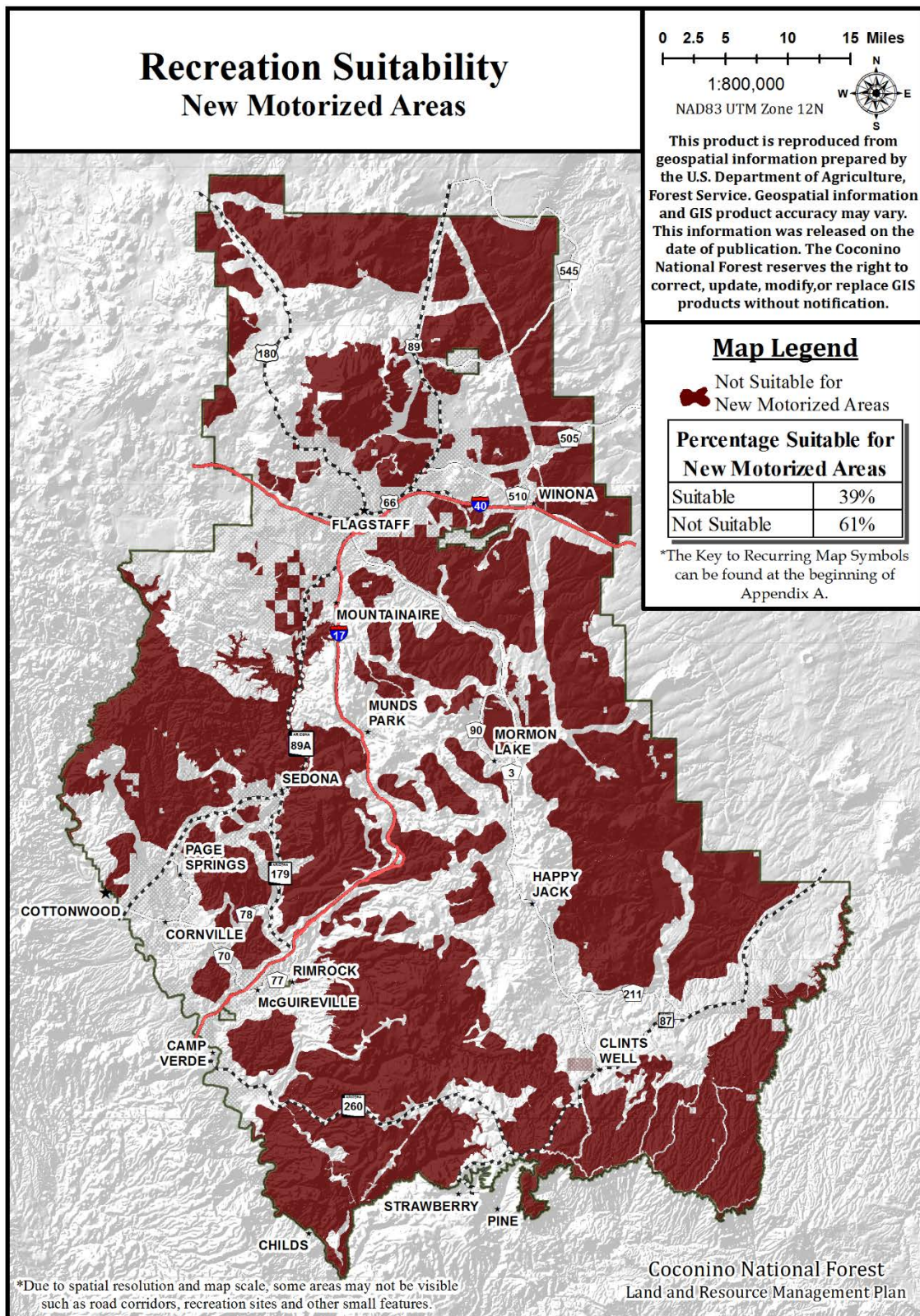
Map 15. Seasonal Closures



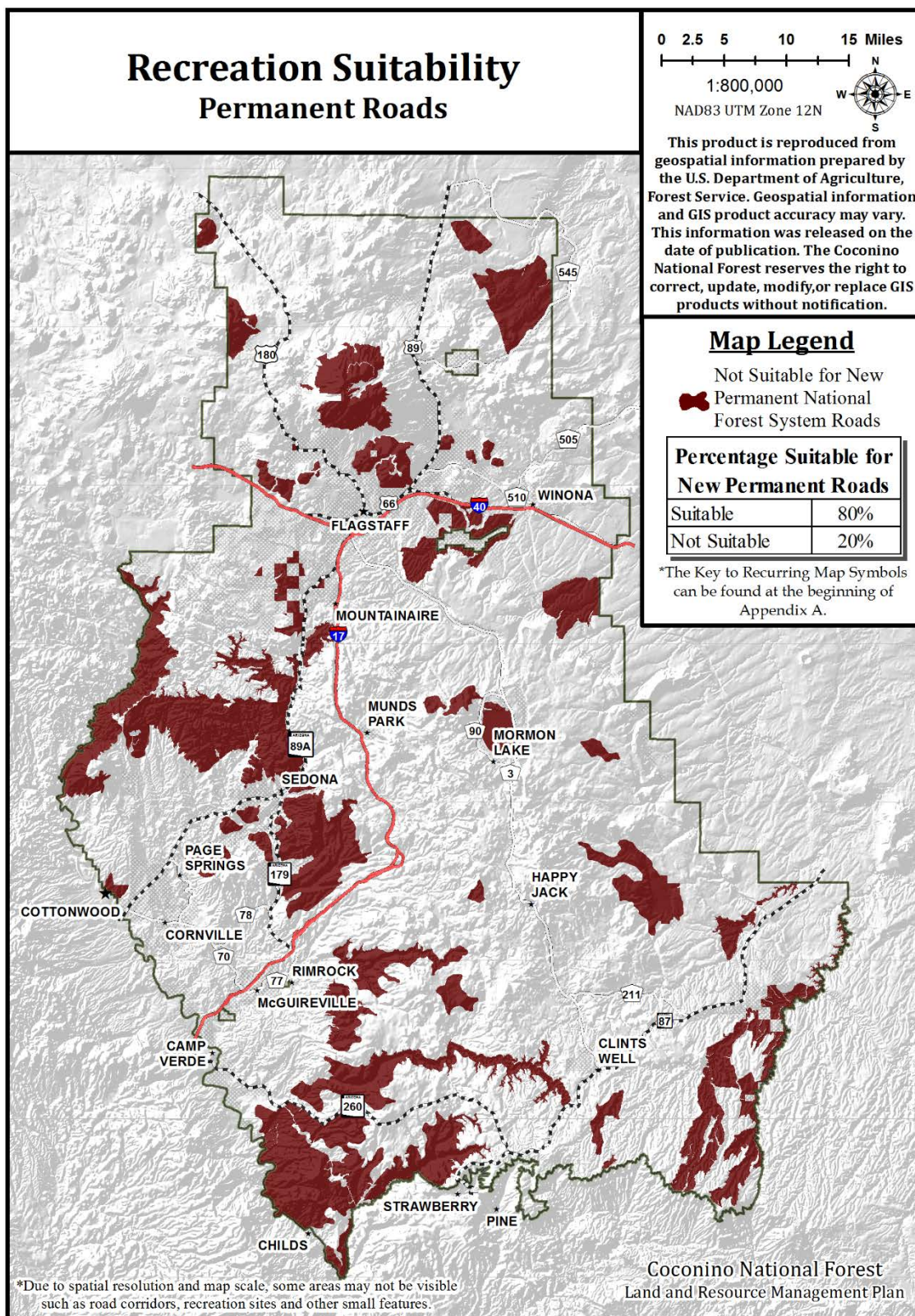
Map 16. Timber Suitability



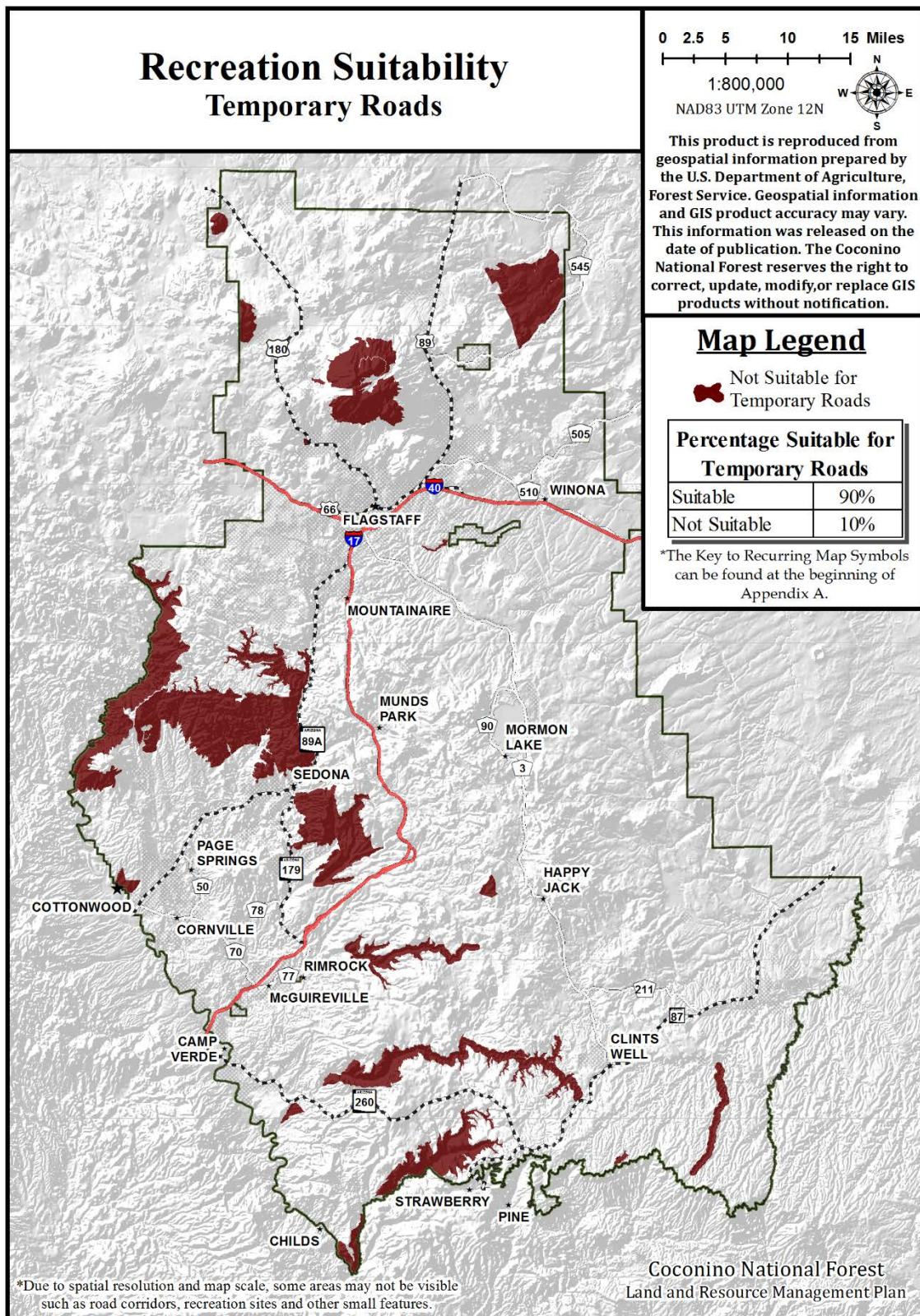
Map 17. Livestock Grazing



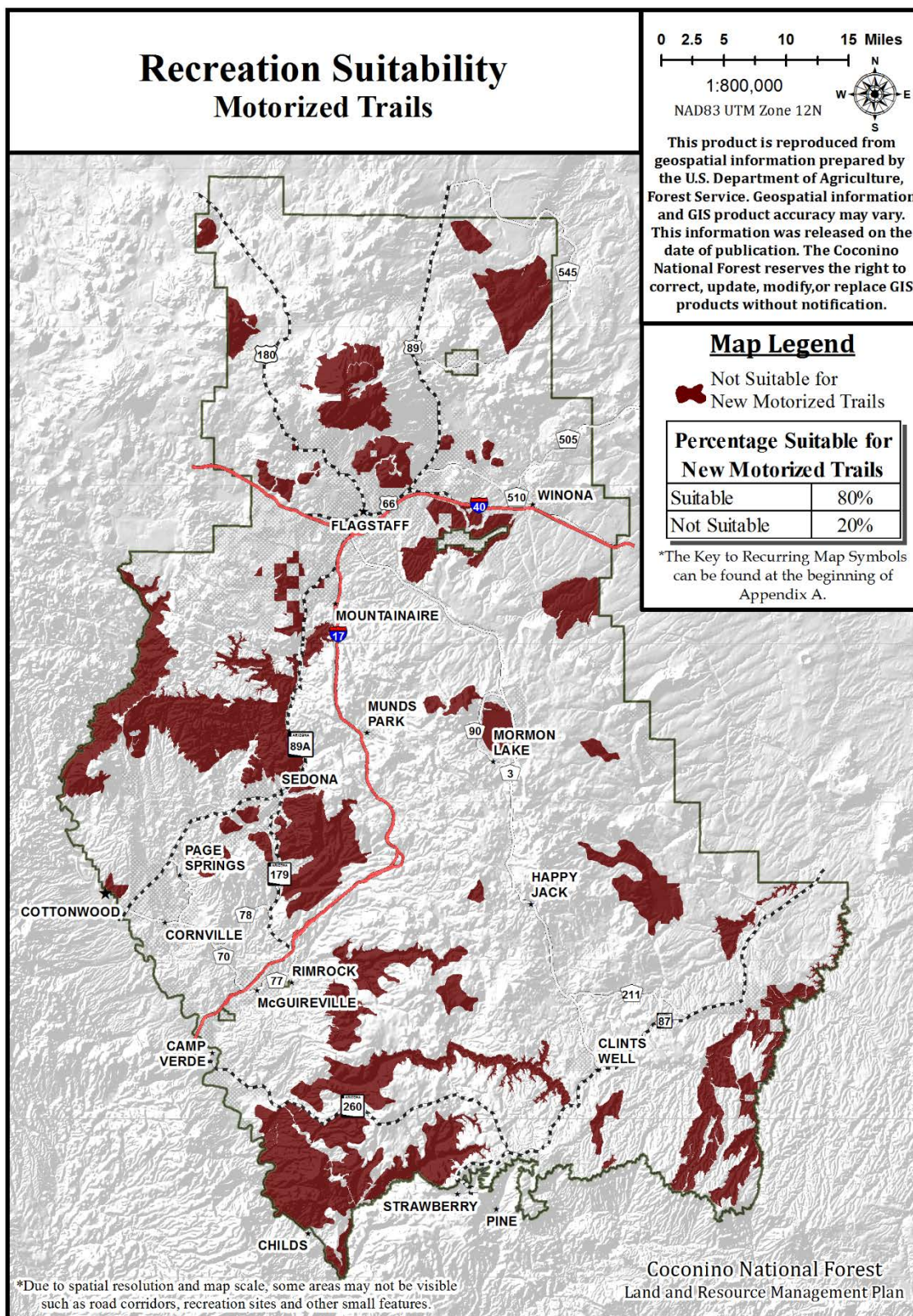
Map 18. Recreation Suitability: New Motorized Areas



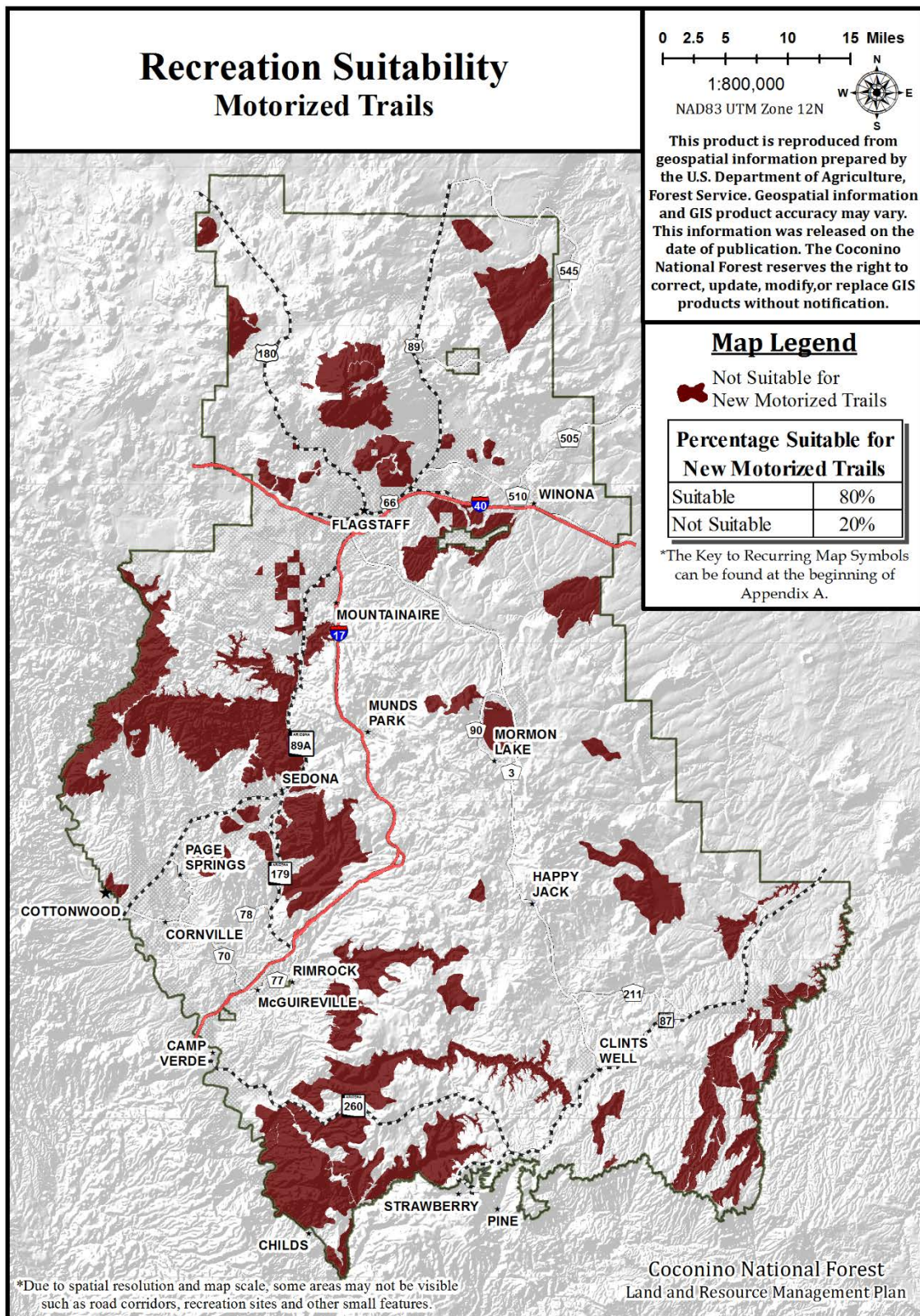
Map 19. Recreation Suitability: Permanent Roads



Map 20. Recreation Suitability: Temporary Roads



Map 21. Recreation Suitability: Motorized Trails



Map 22. Recreation Suitability: Mechanized Travel