

Harvest Summary

Prairie grouse populations are cyclical and respond to a number of variables, including habitat conditions and climatic events. Prairie grouse wing collection helps resource managers determine trends in sharp-tailed grouse and greater prairie chicken populations, as well as the recreational activity of grouse hunting. They also provide a useful index of prairie grouse productivity. Wings collected by hunters on public lands in the sandhills (right) provide a glimpse at the number of birds harvested by hunters since the late 1970's. Thank you for your participation, and good luck.

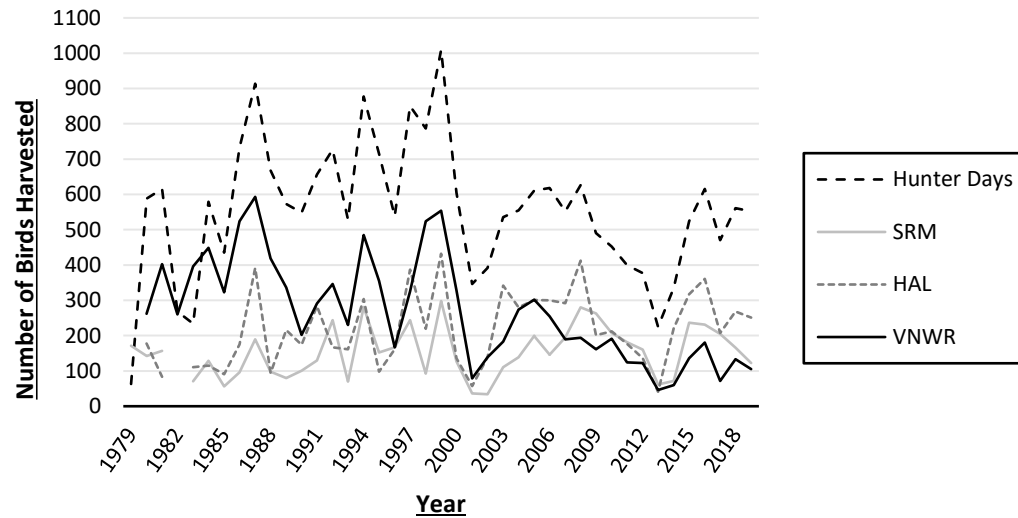
SRM = Samuel R. McKelvie National Forest

HAL = Halsey (Bessey Ranger District)

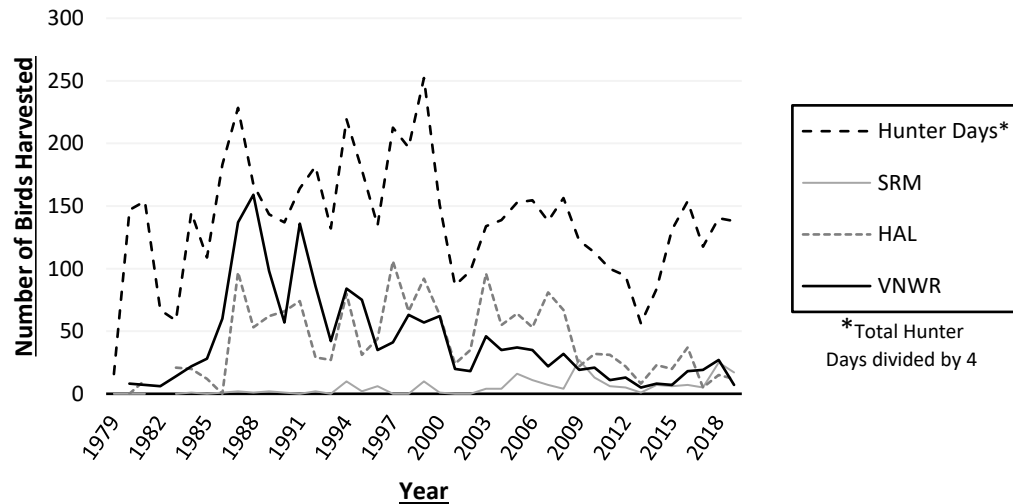
VNWR = Valentine National Wildlife Refuge



Sharp-tailed Grouse Harvest 1979-2019



Greater Prairie Chicken Harvest 1979-2019

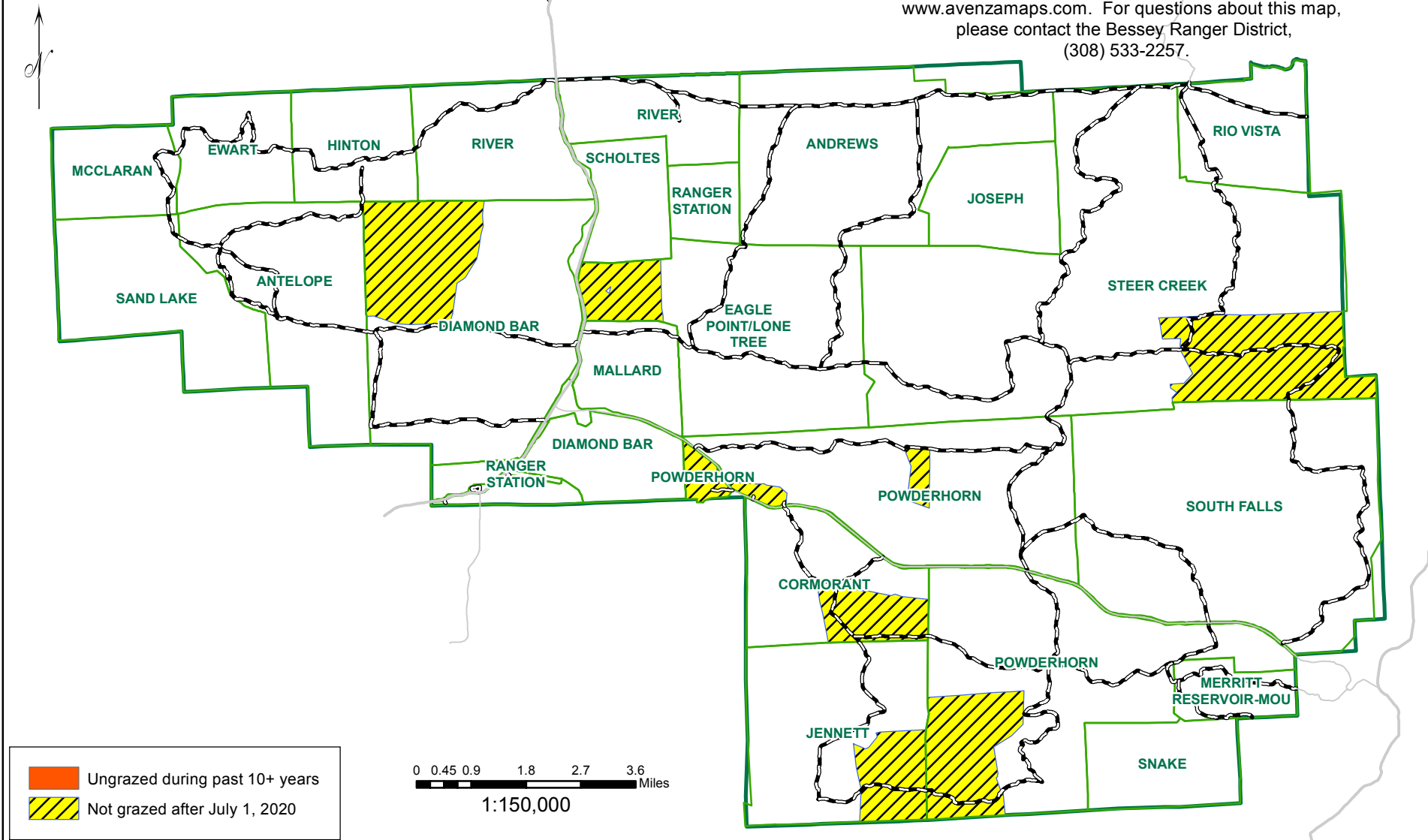


*Total Hunter Days divided by 4



2020 Recently Rested Pastures on Samuel R. McKelvie

This document does not serve any legal capacity regarding motor vehicle access. Please refer to a Motor Vehicle Use Map for rules regarding legal motorized travel within the Bessey District of the Nebraska National Forests. A free copy of the Motor Vehicle Use Map may be obtained by going online to www.avenzamaps.com. For questions about this map, please contact the Bessey Ranger District, (308) 533-2257.



GIS data and product accuracy may vary. The Forest Service reserves the right to correct, update, modify, or replace GIS products without notification. This map does not guarantee site-specific vegetative conditions, nor does it guarantee hunting success in any one area, as grouse movements and needs change throughout the season. Opportunities for viewing prairie grouse exist during spring. For questions about hunting or viewing, please contact the Bessey Ranger District at (308) 533-8112.