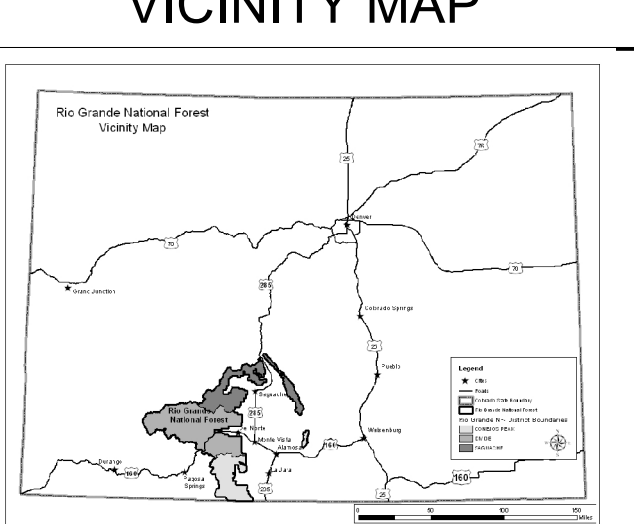


Motor Vehicle Use Map

VICINITY MAP



INFORMATION SOURCES

Rio Grande National Forest
Divide Ranger District
13308 W. Highway 160
Del Norte, Colorado 81132
(719) 657-3321
TDD: (719) 657-6038

Divide Ranger District-Creede Office
304 South Main Street
Creede, Colorado 81130
(719) 658-2556
TDD: (719) 658-6405

IN CASE OF EMERGENCY
DIAL 911

Webpage:
<https://www.fs.usda.gov/main/riogrande/home>



treadlightly!
LEAVING A GOOD IMPRESSION

Travel and recreate with minimum impact.

Respect the environment and the rights of others.

Educate yourself plan and prepare before you go.

Allow for future use of the outdoors by leaving it better than you found it.

Discover the rewards of responsible recreation.

For more information on Tread Lightly!, go to www.treadlightly.org or call 1-800-966-9900.

In accordance with Federal civil rights law and U.S. Department of Agriculture (USDA) civil rights regulations and policies, the USDA, its Agencies, offices, and employees, and institutions participating in or administering USDA programs are prohibited from discriminating based on race, color, national origin, religion, sex, gender identity (including gender expression), sexual orientation, disability, age, marital status, family/parental status, income derived from a public assistance program, political beliefs, or reprisal or retaliation for prior civil rights activity, in any program or activity conducted or funded by USDA (not all bases apply to all programs). Remedies and complaint filing deadlines vary by program or incident.

Persons with disabilities who require alternative means of communication for program information (e.g., Braille, large print, American Sign Language, etc.) should contact the responsible Agency or USDA's TARGET Center at (202) 720-2600 (voice and TTY) or contact USDA through the Federal Relay Service at (800) 877-8339. Additionally, program information may be made available in languages other than English.

To file a program discrimination complaint, complete the USDA Program Discrimination Complaint Form, AD-3027, found online at http://www.ascr.usda.gov/complaint_filing_cust.html and at any USDA office or write a letter addressed to USDA and provide in the letter all of the information requested in the form. To request a copy of the complaint form, call (866) 632-6992. Submit your completed form or letter to USDA by: (1) mail: U.S. Department of Agriculture, Office of the Assistant Secretary for Civil Rights, 1400 Independence Avenue, SW, Washington, D.C. 20250-9410; (2) fax: (202) 690-7442; or (3) email: program.intake@usda.gov.

USDA is an equal opportunity provider, employer, and lender.

Game Retrieval is authorized using ATV's from Noon to 5:00pm (1200 to 1700) each day during hunting season, when conditions would not result in damage to resources, including soils and vegetation.

When a big game animal has been legally taken, the individual who legally took the animal may drive or be driven to the downed animal. Under no circumstances may a second ATV be used to retrieve the animal. The ATV driven to the animal should be of sufficient capacity that only one trip is necessary. The number of individuals who participate in the retrieval is limited only by the ATV's capacity, and the willingness of others to walk to and from the downed animal.

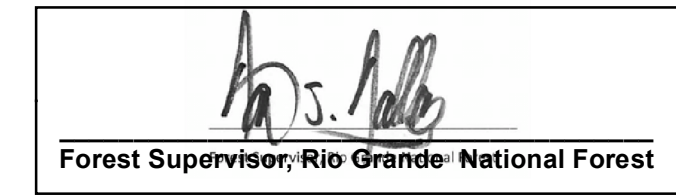
The ATV used to retrieve the game may be operated off of the route within the game retrieval areas defined and specified on the MVUM. If the downed game is further than the allowed distance, the vehicle may be driven only the specified distance from the designated route.

All Terrain Vehicles (ATV's) are vehicles that do not exceed 50 inches in width and have low tire pressure (less than 10 lbs of air pressure) with large tire surface on the ground; has handle-bar steering; and has a seat designed to be straddled by the operator. This does not include dirt bikes or conventional 4-wheel drive vehicles.

Caution: Trails and portions of trails open to motorized use may be unsuitable and unsafe for 4- and 6- wheel ATV use.

PURPOSE AND CONTENTS OF THIS MAP

The designations shown on this motor vehicle use map (MVUM) were made by the responsible official pursuant to 36 CFR 212.51, are effective as of the date on the front cover of this MVUM, and will remain in effect until superseded by next year's MVUM.



It is the responsibility of the user to acquire the current MVUM. This MVUM shows the National Forest System roads, National Forest System trails, and the areas on National Forest System lands in the DIVIDE RANGER DISTRICT that are designated for motor vehicle use pursuant to 36 CFR 212.51. This MVUM also identifies the vehicle classes allowed on each route and in each area, and any seasonal restrictions that apply on those routes and in those areas.

Designation of a road, trail, or area for motor vehicle use by a particular class of vehicle under 36 CFR 212.51 should not be interpreted as encouraging or inviting use or implying that the road, trail or area is passable, actively maintained, or safe for travel. Motor vehicle designations include parking along designated routes and at facilities associated with designated routes when it is safe to do so and when not causing damage to National Forest System resources. Seasonal weather conditions and natural events may render designated roads and trails impassable for extended periods. Designated areas may contain dangerous or impassable terrain. Many designated roads and trails may be passable only by high-clearance vehicles or four-wheel-drive vehicles. Maintenance of designated roads and trails will depend on available resources, and many may receive little maintenance.

This motor vehicle use map identifies those roads, trails, and areas designated for the motor vehicle use under 36 CFR 212.51 for the purpose of enforcing the prohibition at 36 CFR 261.13. This is a limited purpose. The other public roads are shown for information and navigation purposes only and are not subject to designation under the Forest Service travel management regulation.

These designations apply only to National Forest System roads, National Forest System trails, and areas on National Forest System lands.

These designations apply only to National Forest System roads, National Forest System trails, and areas on National Forest System lands.

Legend

- Roads Open to Highway Legal Vehicles
- Roads Open to All Vehicles
- Trails Open to All Vehicles
- Trails Open to Vehicles 50' or Less in Width
- Trails Open to Wheeled Vehicles 50' or Less in Width
- Trails Open to Motorcycles Only
- Special Vehicle Designation (See Table)
- Seasonal Designation (See Table)
- Dispersed Camping, Both Sides
- Dispersed Camping, Left Side
- Dispersed Camping, Right Side (See below for DC information)
- Interstate
- Highways, U.S. State
- Other Public Roads
- Other Public Trails
- Short Route Identifier
- Areas Open to Cross-Country Travel for Game Retrieval (See below)
- FS Campground
- Picnic Area
- Motorized Trailhead
- Information Site
- Forest Service Rental Cabin
- Peaks
- Forest or Unit Boundary
- National Forest System Lands
- Non-National Forest System Lands within the National Forest
- Wilderness Areas
- Township and Range Lines
- Section Lines
- Lakes and Rivers

EXPLANATION OF LEGEND ITEMS

Roads Open to Highway Legal Vehicles Only:

These roads are open only to motor vehicles licensed under State law for general operation on all public roads within the state.

Roads Open to All Vehicles:

These roads are open to all motor vehicles, including smaller off-highway vehicles that may not be licensed for highway use (but not to oversize or overweight vehicles under State traffic law).

Trails Open to All Vehicles:

These trails are open to all motor vehicles, including both highway legal and nonhighway legal vehicles.

Trails Open to Vehicles 50 inches or Less in Width:

Trails open only to motor vehicles less than 50 inches in width at the widest point on the vehicle.

Trails Open to Wheeled Vehicles 50" or less in Width:

These trails are open only to wheeled, motor vehicles less than 50 inches in width at the widest point on the vehicle.

Trails Open to Motorcycles Only:

These trails are open only to motorcycles. Sidecars are not permitted.

Special Vehicle Designation:

This symbol indicates the road or trail is open to classes of vehicles other than those listed above. Refer to the Seasonal and Special Designation Table for further instructions.

Seasonal Designation:

This symbol, used in conjunction with one of the other road or trail symbols, indicates that the road or trail is open only during certain portions of the year. Refer to Seasonal and Special Designation Table for further instructions.

Dispersed Camping/Game Retrieval:

Dispersed Camping, Both Sides

Dispersed Camping, Left Side

Dispersed Camping, Right Side

This symbol is used along with a designated road or trail to indicate limited cross-country motor vehicle use. Dispersed camping is permitted for up to 300 feet from the centerline of the road without causing any resource damage, and only allows the same vehicles as the road allows and the same season as the road is open. Motor vehicles cannot travel parallel to the road beyond 300 feet. The dots indicate where this activity is permitted. They may be on the left, right, or both sides of the route.

Other Public Roads and Trails:

Interstate

Highways, U.S., State, County

Other Public Roads

Other Public Trails

These symbols are used to show routes the Forest Service does not have jurisdiction over and has not designated for motorized use. These symbols are part of the reference layers showing connections to towns and cities outside the forest boundary.

Short Route Identifier:

[70333]

This symbol is used for roads that are too short to show a symbol type on the map. The symbol contains the number of the road or trail. Users should refer to the corresponding number in the Short Route Table for designation information.

Motorized Trail Access:

This symbol indicates a trailhead for access to a motorized route. Not all motorized routes have trailheads and those that do may range from primitive to developed.

Areas Open to Cross Country Travel for Game Retrieval:

These are areas on National Forest System land that allow cross-country travel by ATV's for Game Retrieval only, when there is no resource damage. See section below for more information.

Divide Ranger District - East

Georeferenced PDF MVUM Maps

Free download available with Avenza

Divide Ranger District - West

PROHIBITIONS

It is prohibited to possess or operate a motor vehicle on National Forest System lands on the RIO GRANDE NATIONAL FOREST other than in accordance with these designations (36 CFR 261.13).

Violators of 36 CFR 261.13 are subject to a fine of up to \$5,000, imprisonment for up to 6 months, or both (18 U.S.C. 3571(a)). This prohibition applies regardless of the presence or absence of signs.

This map does not display nonmotorized uses, over-snow uses, or other facilities and attractions on the RIO GRANDE NATIONAL FOREST. Obtain forest visitor information from the local national forest office.

Designated roads, trails and areas may also be subject to temporary, emergency closures. As a visitor, you must comply with signs notifying you of such restrictions. A national forest may issue an order to close a road, trail or area on a temporary basis to protect the life, health, or safety of forest visitors or the natural or cultural resources in these areas. Such a temporary and/or emergency closure is consistent with the Travel Management Rule (36 CFR 212.52 (b), 36 CFR 261 subpart B).

The designation "road or trail open to all motor vehicles" does not supersede State traffic law.

Electric Bicycle (E-Bike)

Also referred to as an electric mountain bike (eMTB), E-bikes are motor vehicles.

E-bikes are only allowed on the motor vehicle routes depicted on this map.

OPERATOR RESPONSIBILITIES

Operating a motor vehicle on National Forest System roads, National Forest System trails, and in areas on National Forest System lands carries a greater responsibility than operating that vehicle in a city or other developed setting. Not only must you know and follow all applicable traffic laws, you need to show concern for the environment as well as other forest users. The misuse of motor vehicles can lead to the temporary or permanent closure of any designated road, trail, or area. As a motor vehicle operator, you are also subject to State traffic law, including State requirements for licensing, registration, and operation of the vehicle in question.

Motor vehicle use, especially off-highway vehicle use, involves inherent risks that may cause property damage, serious injury, and possibly death to participants. Drive cautiously and anticipate rough surfaces and features, such as snow, mud, vegetation, and water crossings common to remote driving conditions. By your participation, you voluntarily assume full responsibility for these damages, risks, and dangers. Take care at all times to protect yourself and those under your responsibility.

Much of the RIO GRANDE NATIONAL FOREST is remote. Medical assistance may not be readily available. Cellular telephones do not work in many areas of the RIO GRANDE NATIONAL FOREST. Take adequate food, water, first-aid supplies, and other equipment appropriate for the conditions and expected weather.

ALWAYS REMEMBER TO RESPECT PRIVATE LAND! PROTECT YOUR PRIVILEGE. STAY ON DESIGNATED ROADS AND TRAILS AND IN DESIGNATED AREAS.

Read and understand this map in its entirety. If you have questions, please contact the RIO GRANDE NATIONAL FOREST for clarification.

As a motor vehicle operator on a National Forest System road, trail, or area you must comply with this map, as well as all Federal, State, and local laws and regulations. Compliance with these rules is your responsibility.

Game Retrieval is authorized using ATV's from Noon to 5:00pm (1200 to 1700) each day during hunting season, when conditions would not result in damage to resources, including soils and vegetation.

When a big game animal has been legally taken, the individual who legally took the animal may drive or be driven to the downed animal. Under no circumstances may a second ATV be used to retrieve the animal. The ATV driven to the animal should be of sufficient capacity that only one trip is necessary. The number of individuals who participate in the retrieval is limited only by the ATV's capacity, and the willingness of others to walk to and from the downed animal.

The ATV used to retrieve the game may be operated off of the route within the game retrieval areas defined and specified on the MVUM. If the downed game is further than the allowed distance, the vehicle may be driven only the specified distance from the designated route.

All Terrain Vehicles (ATV's) are vehicles that do not exceed 50 inches in width and have low tire pressure (less than 10 lbs of air pressure) with large tire surface on the ground; has handle-bar steering; and has a seat designed to be straddled by the operator. This does not include dirt bikes or conventional 4-wheel drive vehicles.

Caution: Trails and portions of trails open to motorized use may be unsuitable and unsafe for 4- and 6- wheel ATV use.

In accordance with Federal civil rights law and U.S. Department of Agriculture (USDA) civil rights regulations and policies, the USDA, its Agencies, offices, and employees, and institutions participating in or administering USDA programs are prohibited from discriminating based on race, color, national origin, religion, sex, gender identity (including gender expression), sexual orientation, disability, age, marital status, family/parental status, income derived from a public assistance program, political beliefs, or reprisal or retaliation for prior civil rights activity, in any program or activity conducted or funded by USDA (not all bases apply to all programs). Remedies and complaint filing deadlines vary by program or incident.

Persons with disabilities who require alternative means of communication for program information (e.g., Braille, large print, American Sign Language, etc.) should contact the responsible Agency or USDA's TARGET Center at (202) 720-2600 (voice and TTY) or contact USDA through the Federal Relay Service at (800) 877-8339. Additionally, program information may be made available in languages other than English.

To file a program discrimination complaint, complete the USDA Program Discrimination Complaint Form, AD-3027, found online at http://www.ascr.usda.gov/complaint_filing_cust.html and at any USDA office or write a letter addressed to USDA and provide in the letter all of the information requested in the form. To request a copy of the complaint form, call (866) 632-6992. Submit your completed form or letter to USDA by: (1) mail: U.S. Department of Agriculture, Office of the Assistant Secretary for Civil Rights, 1400 Independence Avenue, SW, Washington, D.C. 20250-9410; (2) fax: (202) 690-7442; or (3) email: program.intake@usda.gov.

USDA is an equal opportunity provider, employer, and lender.

Game Retrieval is authorized using ATV's from Noon to 5:00pm (1200 to 1700) each day during hunting season, when conditions would not result in damage to resources, including soils and vegetation.

When a big game animal has been legally taken, the individual who legally took the animal may drive or be driven to the downed animal. Under no circumstances may a second ATV be used to retrieve the animal. The ATV driven to the animal should be of sufficient capacity that only one trip is necessary. The number of individuals who participate in the retrieval is limited only by the ATV's capacity, and the willingness of others to walk to and from the downed animal.

The ATV used to retrieve the game may be operated off of the route within the game retrieval areas defined and specified on the MVUM. If the downed game is further than the allowed distance, the vehicle may be driven only the specified distance from the designated route.

All Terrain Vehicles (ATV's) are vehicles that do not exceed 50 inches in width and have low tire pressure (less than 10 lbs of air pressure) with large tire surface on the ground; has handle-bar steering; and has a seat designed to be straddled by the operator. This does not include dirt bikes or conventional 4-wheel drive vehicles.

Caution: Trails and portions of trails open to motorized use may be unsuitable and unsafe for 4- and 6- wheel ATV use.

In accordance with Federal civil rights law and U.S. Department of Agriculture (USDA) civil rights regulations and policies, the USDA, its Agencies, offices, and employees, and institutions participating in or administering USDA programs are prohibited from discriminating based on race, color, national origin, religion, sex, gender identity (including gender expression), sexual orientation, disability, age, marital status, family/parental status, income derived from a public assistance program, political beliefs, or reprisal or retaliation for prior civil rights activity, in any program or activity conducted or funded by USDA (not all bases apply to all programs). Remedies and complaint filing deadlines vary by program or incident.

Persons with disabilities who require alternative means of communication for program information (e.g., Braille, large print, American Sign Language, etc.) should contact the responsible Agency or USDA's TARGET Center at (202) 720-2600 (voice and TTY) or contact USDA through the Federal Relay Service at (800) 877-8339. Additionally, program information may be made available in languages other than English.

To file a program discrimination complaint, complete the USDA Program Discrimination Complaint Form, AD-3027, found online at http://www.ascr.usda.gov/complaint_filing_cust.html and at any USDA office or write a letter addressed to USDA and provide in the letter all of the information requested in the form. To request a copy of the complaint form, call (866) 632-6992. Submit your completed form or letter to USDA by: (1) mail: U.S. Department of Agriculture, Office of the Assistant Secretary for Civil Rights, 1400 Independence Avenue, SW, Washington, D.C. 20250-9410; (2) fax: (202) 690-7442; or (3) email: program.intake@usda.gov.

USDA is an equal opportunity provider, employer, and lender.

Game Retrieval is authorized using ATV's from Noon to 5:00pm (1200 to 1700) each day during hunting season, when conditions would not result in damage to resources, including soils and vegetation.

When a big game animal has been legally taken, the individual who legally took the animal may drive or be driven to the downed animal. Under no circumstances may a second ATV be used to retrieve the animal. The ATV driven to the animal should be of sufficient capacity that only one trip is necessary. The number of individuals who participate in the retrieval is limited only by the ATV's capacity, and the willingness of others to walk to and from the downed animal.

The ATV used to retrieve the game may be operated off of the route within the game retrieval areas defined and specified on the MVUM. If the downed game is further than the allowed distance, the vehicle may be driven only the specified distance from the designated route.

All Terrain Vehicles (ATV's) are vehicles that do not exceed 50 inches in width and have low tire pressure (less than 10 lbs of air pressure) with large tire surface on the ground; has handle-bar steering; and has a seat designed to be straddled by the operator. This does not include dirt bikes or conventional 4-wheel drive vehicles.

Caution: Trails and portions of trails open to motorized use may be unsuitable and unsafe for 4- and 6- wheel ATV use.

Game Retrieval is authorized using ATV's from Noon to 5:00pm (1200 to 1700) each day during hunting season, when conditions would not result in damage to resources, including soils and vegetation.

When a big game animal has been legally taken, the individual who legally took the animal may drive or be driven to the downed animal. Under no circumstances may a second ATV be used to retrieve the animal. The ATV driven to the animal should be of sufficient capacity that only one trip is necessary. The number of individuals who participate in the retrieval is limited only by the ATV's capacity, and the willingness of others to walk to and from the downed animal.

The ATV used to retrieve the game may be operated off of the route within the game retrieval areas defined and specified on the MVUM. If the downed game is further than the allowed distance, the vehicle may be driven only the specified distance from the designated route.

All Terrain Vehicles (ATV's) are vehicles that do not exceed 50 inches in width and have low tire pressure (less than 10 lbs of air pressure) with large tire surface on the ground; has handle-bar steering; and has a seat designed to be straddled by the operator. This does not include dirt bikes or conventional 4-wheel drive vehicles.

Caution: Trails and portions of trails open to motorized use may be unsuitable and unsafe for 4- and 6- wheel ATV use.

Game Retrieval is authorized using ATV's from Noon to 5:00pm (1200 to 1700) each day during hunting season, when conditions would not result in damage to resources, including soils and vegetation.

When a big game animal has been legally taken, the individual who legally took the animal may drive or be driven to the downed animal. Under no circumstances may a second ATV be used to retrieve the animal. The ATV driven to the animal should be of sufficient capacity that only one trip is necessary. The number of individuals who participate in the retrieval is limited only by the ATV's capacity, and the willingness of others to walk to and from the downed animal.

The ATV used to retrieve the game may be operated off of the route within the game retrieval areas defined and specified on the MVUM. If the downed game is further than the allowed distance, the vehicle may be driven only the specified distance from the designated route.

All Terrain Vehicles (ATV's) are vehicles that do not exceed 50 inches in width and have low tire pressure (less than 10 lbs of air pressure) with large tire surface on the ground; has handle-bar steering; and has a seat designed to be straddled by the operator. This does not include dirt bikes or conventional 4-wheel drive vehicles.

Caution: Trails and portions of trails open to motorized use may be unsuitable and unsafe for 4- and 6- wheel ATV use.

Game Retrieval is authorized using ATV's from Noon to 5:00pm (1200 to 1700) each day during hunting season, when conditions would not result in damage to resources, including soils and vegetation.

When a big game animal has been legally taken, the individual who legally took the animal may drive or be driven to the downed animal. Under no circumstances may a second ATV be used to retrieve the animal. The ATV driven to the animal should be of sufficient capacity that only one trip is necessary. The number of individuals who participate in the retrieval is limited only by the ATV's capacity, and the willingness of others to walk to and from the downed animal.

The ATV used to retrieve the game may be operated off of the route within the game retrieval areas defined and specified on the MVUM. If the downed game is further than the allowed distance, the vehicle may be driven only the specified distance from the designated route.

All Terrain Vehicles (ATV's) are vehicles that do not exceed 50 inches in width and have low tire pressure (less than 10 lbs of air pressure) with large tire surface on the ground; has handle-bar steering; and has a seat designed to be straddled by the operator. This does not include dirt bikes or conventional 4-wheel drive vehicles.

Caution: Trails and portions of trails open to motorized use may be unsuitable and unsafe for 4- and 6- wheel ATV use.

Game Retrieval is authorized using ATV's from Noon to 5:00pm (1200 to 1700) each day during hunting season, when conditions would not result in damage to resources, including soils and vegetation.

When a big game animal has been legally taken, the individual who legally took the animal may drive or be driven to the downed animal. Under no circumstances may a second ATV be used to retrieve the animal. The ATV driven to the animal should be of sufficient capacity that only one trip is necessary. The number of individuals who participate in the retrieval is limited only by the ATV's capacity, and the willingness of others to walk to and from the downed animal.

The ATV used to retrieve the game may be operated off of the route within the game retrieval areas defined and specified on the MVUM. If the downed game is further than the allowed distance, the vehicle may be driven only the specified distance from the designated route.

All Terrain Vehicles (ATV's) are vehicles that do not exceed 50 inches in width and have low tire pressure (less than 10 lbs of air pressure) with large tire surface on the ground; has handle-bar steering; and has a seat designed to be straddled by the operator. This does not include dirt bikes or conventional 4-wheel drive vehicles.

Caution: Trails and portions of trails open to motorized use may be unsuitable and unsafe for 4- and 6- wheel ATV use.

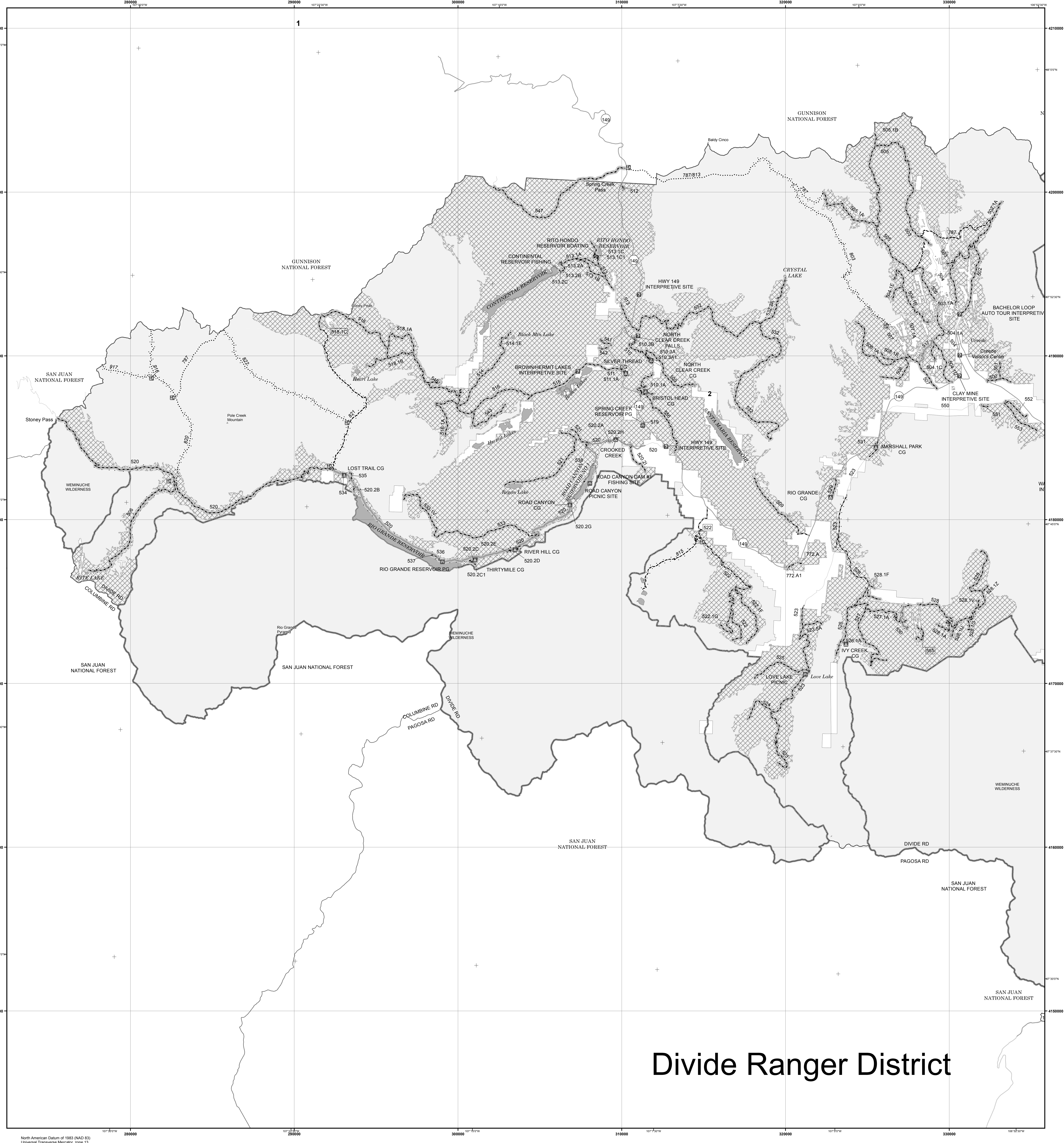
Game Retrieval is authorized using ATV's from Noon to 5:00pm (1200 to 1700) each day during hunting season, when conditions would not result in damage to resources, including soils and vegetation.

When a big game animal has been legally taken, the individual who legally took the animal may drive or be driven to the downed animal. Under no circumstances may a second ATV be used to retrieve the animal. The ATV driven to the animal should be of sufficient capacity that only one trip is necessary. The number of individuals who participate in the retrieval is limited only by the ATV's capacity, and the willingness of others to walk to and from the downed animal.

The ATV used to retrieve the game may be operated off of the route within the game retrieval areas defined and specified on the MVUM. If the downed game is further than the allowed distance, the vehicle may be driven only the specified distance from the designated route.

All Terrain Vehicles (ATV's) are vehicles that do not exceed 50 inches in width and have low tire pressure (less than 10 lbs of air pressure) with large tire surface on the ground; has handle-bar steering; and has a seat designed to be straddled by the operator. This does not include dirt bikes or conventional 4-wheel drive vehicles.

Caution: Trails and portions of trails open to motorized use may be unsuitable and unsafe for 4- and 6- wheel ATV use.



Divide Ranger District