

R. 11 W.

R. 10.5 W.

R. 10 W.

R. 9 W.

R. 8 W.

R. 7 W.

R. 6 W.

T. 23 N.

T. 23 N.

T. 22 N.

T. 22 N.

T. 21 N.




T. 21 N.


T. 20 N.

T. 20 N.

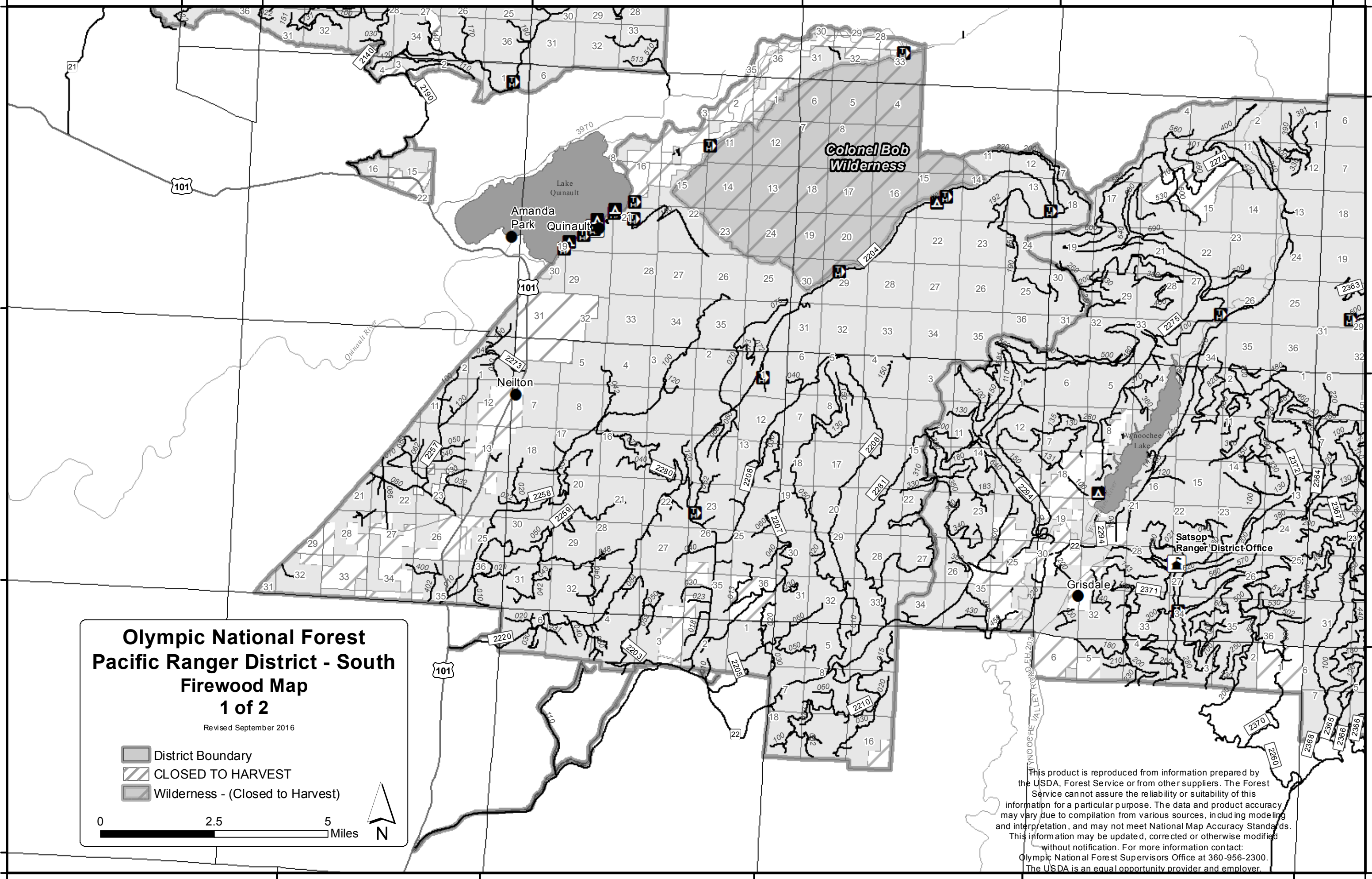
**Olympic National Forest
Pacific Ranger District - South
Firewood Map
1 of 2**

Revised September 2016

-  District Boundary
-  CLOSED TO HARVEST
-  Wilderness - (Closed to Harvest)

0 2.5 5 Miles 

This product is reproduced from information prepared by the USDA, Forest Service or from other suppliers. The Forest Service cannot assure the reliability or suitability of this information for a particular purpose. The data and product accuracy may vary due to compilation from various sources, including modeling and interpretation, and may not meet National Map Accuracy Standards. This information may be updated, corrected or otherwise modified without notification. For more information contact: Olympic National Forest Supervisors Office at 360-956-2300. The USDA is an equal opportunity provider and employer.



R. 12 W.

R. 11 W.

R. 10 W.

R. 9 W.

R. 8.5 W.

R. 8 W.

R. 7 W.

T. 25 N.

T. 24 N.

T. 23 N.

T. 22 N.

T. 25 N.

T. 24 N.

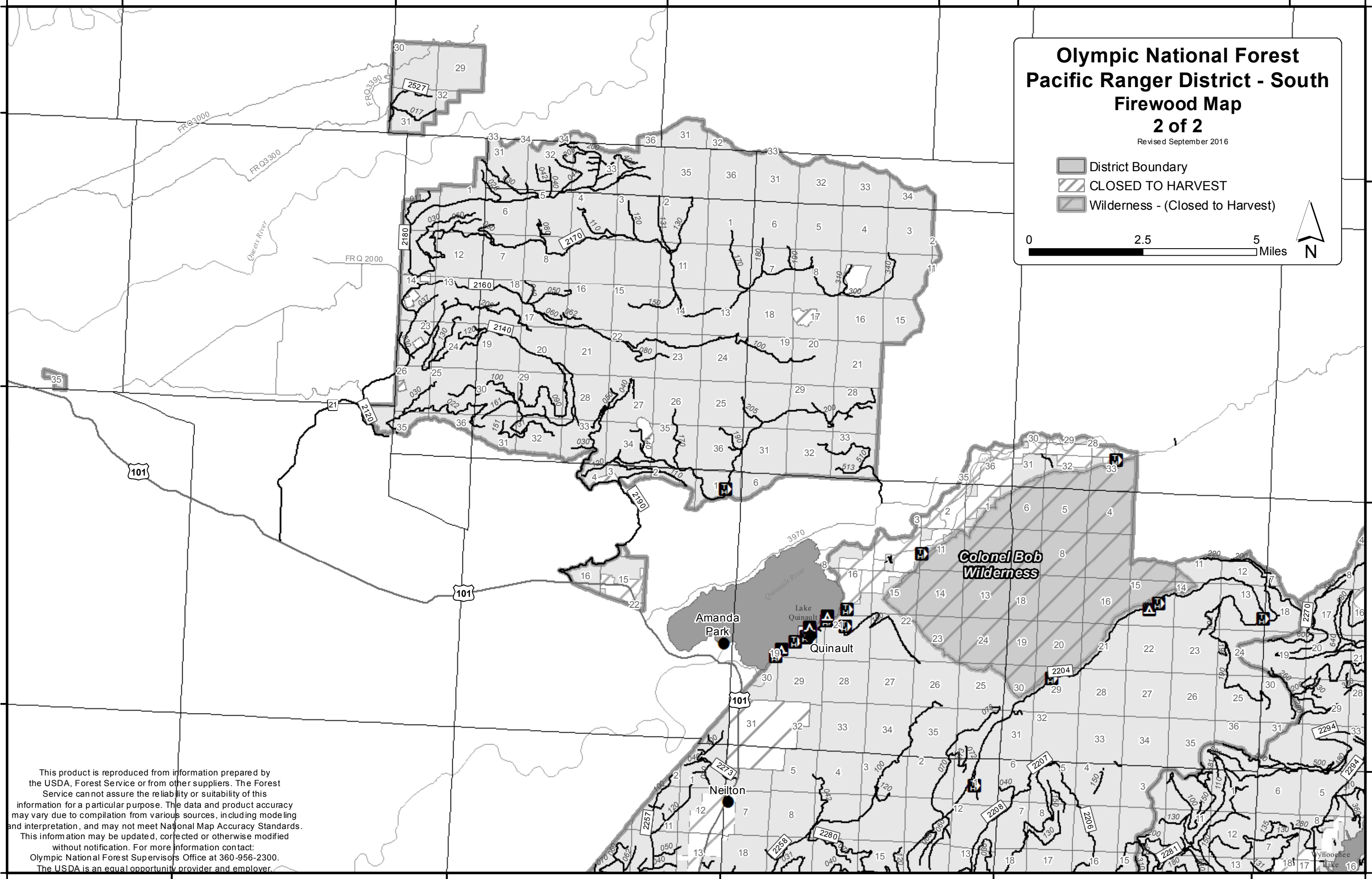
T. 23 N.

T. 22 N.

Olympic National Forest
Pacific Ranger District - South
Firewood Map
2 of 2
 Revised September 2016

- District Boundary
- CLOSED TO HARVEST
- Wilderness - (Closed to Harvest)

0 2.5 5 Miles



This product is reproduced from information prepared by the USDA, Forest Service or from other suppliers. The Forest Service cannot assure the reliability or suitability of this information for a particular purpose. The data and product accuracy may vary due to compilation from various sources, including modeling and interpretation, and may not meet National Map Accuracy Standards. This information may be updated, corrected or otherwise modified without notification. For more information contact: Olympic National Forest Supervisors Office at 360-956-2300. The USDA is an equal opportunity provider and employer.

R. 12 W.

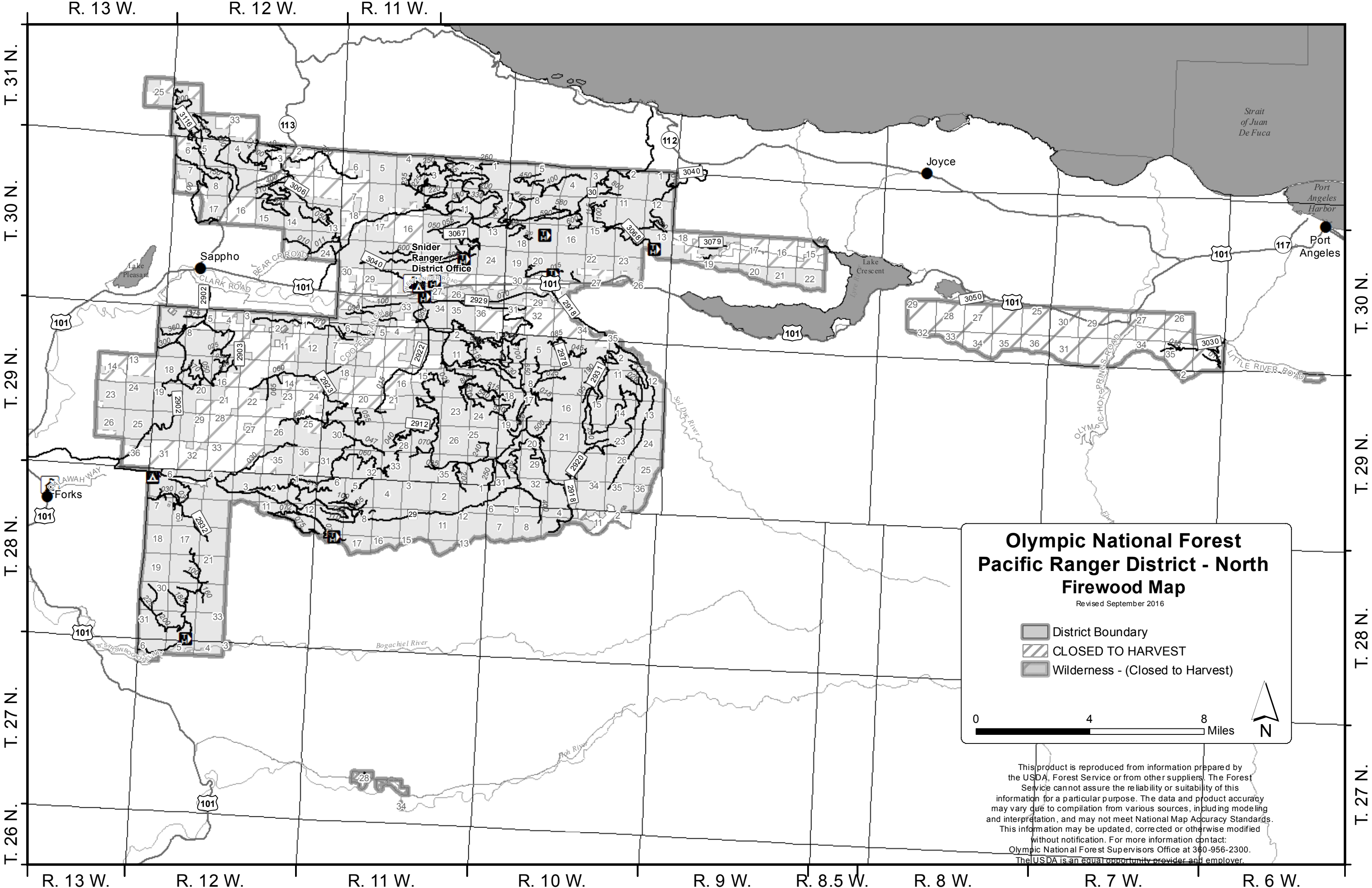
R. 11 W.

R. 10 W.

R. 9 W.

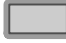


R. 8 W.

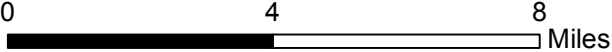
R. 7 W.



Olympic National Forest Pacific Ranger District - North Firewood Map

Revised September 2016

-  District Boundary
-  CLOSED TO HARVEST
-  Wilderness - (Closed to Harvest)



This product is reproduced from information prepared by the USDA, Forest Service or from other suppliers. The Forest Service cannot assure the reliability or suitability of this information for a particular purpose. The data and product accuracy may vary due to compilation from various sources, including modeling and interpretation, and may not meet National Map Accuracy Standards. This information may be updated, corrected or otherwise modified without notification. For more information contact: Olympic National Forest Supervisors Office at 360-956-2300. The USDA is an equal opportunity provider and employer.