

# West Side Rails:

## Tuolumne City to North Fork/Tuolumne River

### Stanislaus National Forest

ROG 16-51-03; 06/12



At the turn of the century, prospects for growing the timber industry in Tuolumne County were in full bloom. The West Side Flume and Lumber Co. came to Carters (now the town of Tuolumne) to build its impressive sawmill. To bring the timber to its mill, the West Side Lumber Company built its own narrow gauge railroad: the Hetch Hetchy and Yosemite Valleys Railway.

#### About the Site

The initial stretch of the mainline grade between Carters and the North Fork Tuolumne River was blasted into the steep and rocky canyon. Chinese workers began its construction in 1901, with local Native Americans finishing the job. Without bulldozers or loaders, these crews carved this key piece of railway out of a canyon wall—winding in and out of the turns and drainages—eventually crossing the north fork and positioning the West Side to log its timber to the west.

#### Rails to Trails

Today, 5.5 miles of this trail to the North Fork of the Tuolumne River have been converted to combination hiking / biking / equestrian trails. You will see rails, ties and other construction features such as stacked rock retaining walls. The trail affords spectacular views and a stunning display of wildflowers in the springtime.



There is little or no shade on this wide, level trail—take plenty of water, wear a hat and take an energy snack just in case you need the extra calories on the trail. Except for extreme weather conditions, this trail is open during the winter months.

#### Getting There

From the Mi-Wok Ranger District station, travel west on Highway 108 for 2.9 miles to Tuolumne Road North. Turn left and drive 6.7 miles to Cottonwood Road (Forest Service Road 1N04, also designated primary Forest Route 14). Turn left and travel 0.2 mile to the trailhead and parking area on the left, at Buchanan and Miramonte Roads.

Please feel free to call, write or visit any of these locations for more information on camping or other recreation activities offered in the Stanislaus National Forest:

#### Stanislaus National Forest

##### Supervisor's Office

19777 Greenley Road  
Sonora, CA 95370  
(209) 532-3671  
TDD: (209) 533-0765  
FAX: (209) 533-1890

##### Mi-Wok Ranger District

24695 Hwy 108  
PO Box 100  
Mi-Wuk Village, CA 95346  
(209) 586-3234  
TDD: (209) 586-0262  
FAX: (209) 586-0643

##### Calaveras Ranger District

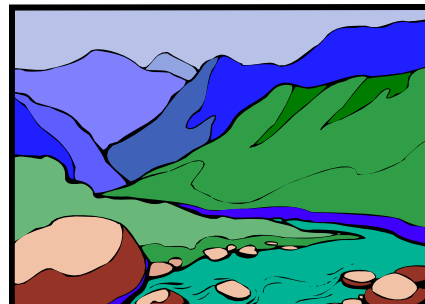
5519 Hwy 4  
PO Box 500  
Hathaway Pines, CA 95323  
(209) 795-1381  
TDD: (209) 795-2854  
FAX: (209) 795-6849

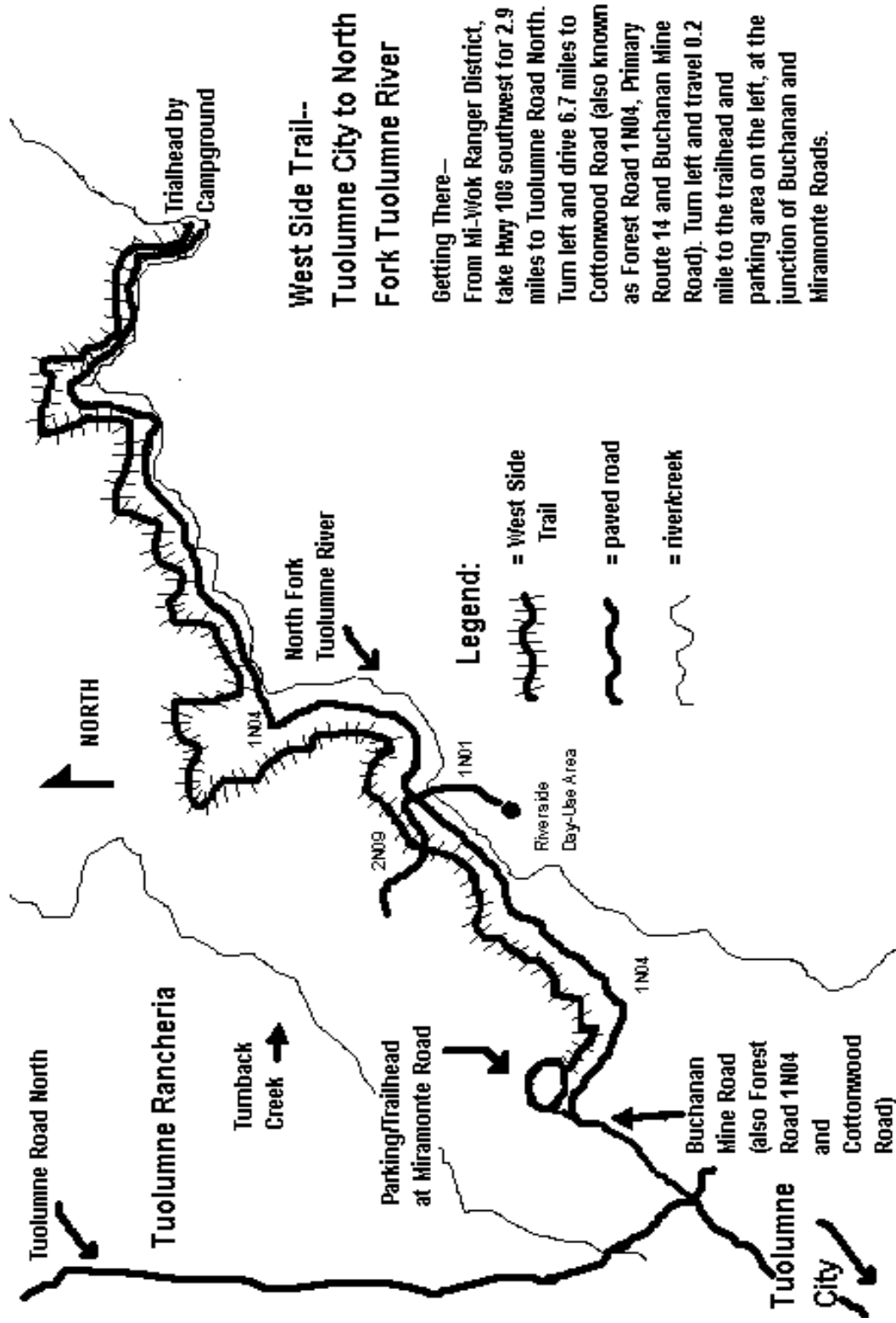
##### Summit Ranger District

#1 Pinecrest Lake Road  
Pinecrest, CA 95364  
(209) 965-3434  
TDD: (209) 965-0488  
FAX: (209) 965-3372

##### Groveland Ranger District

24545 Hwy 120  
Groveland, CA 95321  
(209) 962-7825  
TDD: (209) 962-6406  
FAX: (209) 962-7412





The U.S. Department of Agriculture (USDA) prohibits discrimination in all its programs and activities on the basis of race, color, national origin, age, disability, and where applicable, sex, marital status, familial status, parental status, religion, sexual orientation, genetic information, political beliefs, reprisal, or because all or part of an individual's income is derived from any public assistance program. (Not all prohibitions apply to all programs.) Persons with disabilities who require alternative means for communication of program information (Braille, large print, audiotape, etc.) should contact USDA's TARGET Center at (202) 720-2600 (voice and TDD). To file a complaint of discrimination, write to USDA, Director, Office of Civil Rights, 1400 Independence Avenue, S.W., Washington, D.C. 20250-9410, or call (800) 795-3272 (voice) or (202) 720-6382 (TDD). USDA is an equal opportunity provider and employer.