

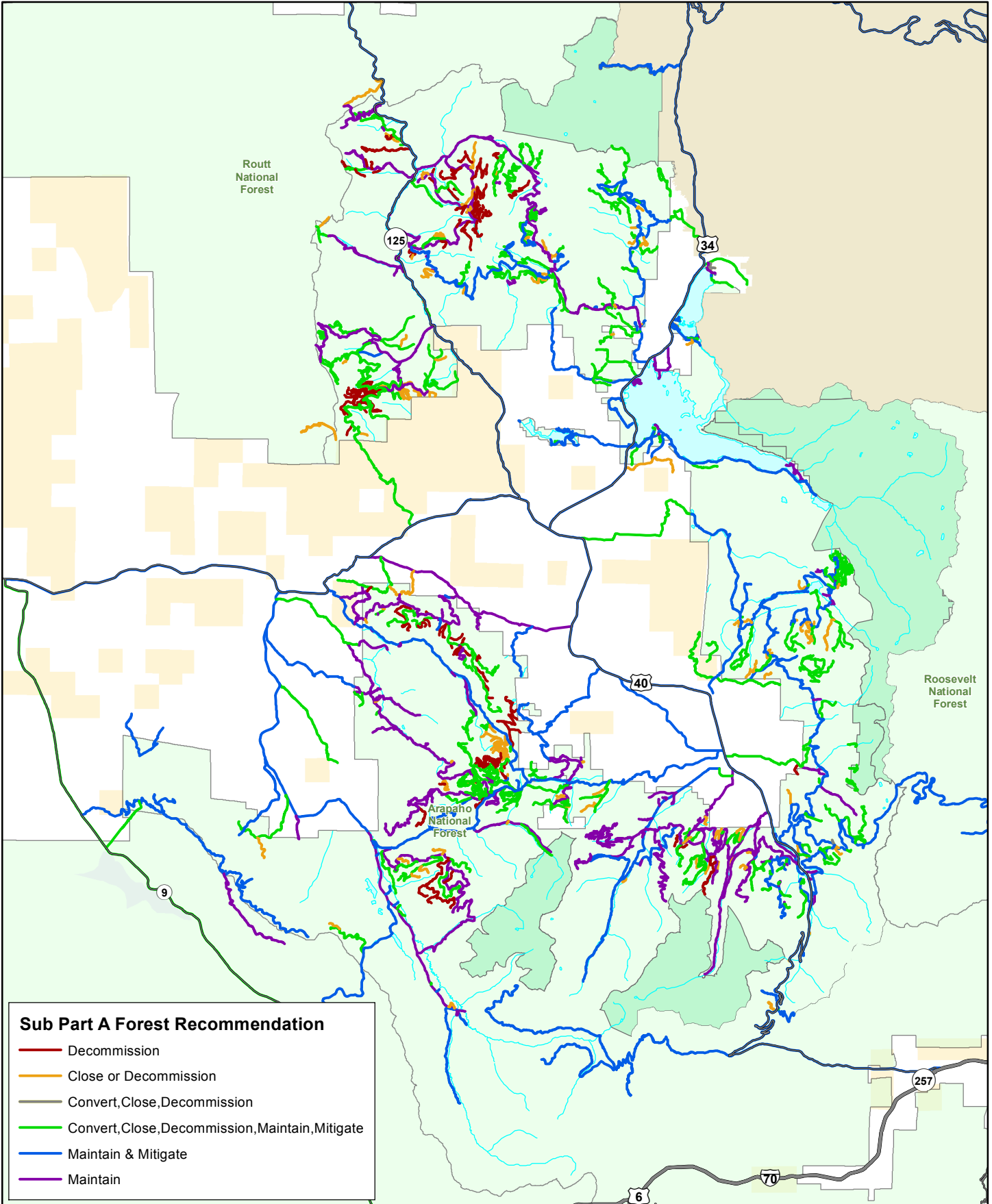
Arapaho National Forest
Sulphur Ranger District
Road Risk/Benefit Assessment



Date: 1/7/2015

1:350,000

0 1.25 2.5 5 7.5 10 Miles



Sub Part A Forest Recommendation

- Decommission
- Close or Decommission
- Convert, Close, Decommission
- Convert, Close, Decommission, Maintain, Mitigate
- Maintain & Mitigate
- Maintain