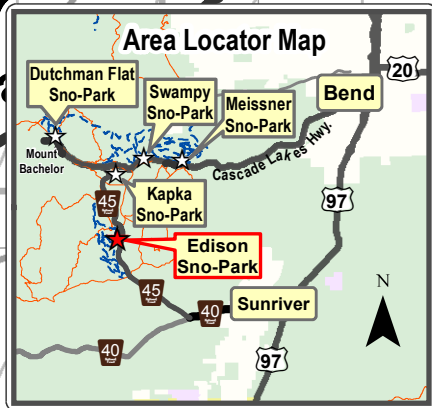


Edison Sno-Park Nordic Trails

608710 121°38'24"W 610319 121°37'11"W 611929 121°35'57"W 613538

486697 43°56'45"N
486536 43°55'52"N
486375 43°55'0"N
486214 43°54'7"N
486053 43°53'14"N

486697 43°56'45"N
486536 43°55'52"N
486375 43°55'0"N
486214 43°54'7"N
486053 43°53'14"N



CANINE COURTESY

This area is Open to Dogs

When visiting this area with your dog please:

- Keep your dog close to you and under reliable physical or voice control at all times. Dogs must be leashed when in the Sno-Park.
- Control dogs' aggressive behavior towards other parties.
- Remove dog excrement from trails, shelter areas and Sno-Parks.

Report Lost dogs to Deschutes County Animal Control and the Forest Service.

Map Legend

- Marked Nordic Ski Trail
- Snowshoe Trail
- Marked Snowmobile Trail
- Snowmobile Trail Junction Number
- Shelter - No Camping
- Sno-Park

0 0.5 1 Miles

Contour interval: minor = 100', major = 500'

GPS coordinate grids:
 Gray Label = UTM, NAD27, Zone 10
 Black Label = Lat, Long. NAD1983

Deschutes National Forest
 Map updated February 2016 (SWH)
 For the greatest good

The Forest Service cannot assure the reliability or suitability of this information for any particular purpose. Spatial information may not meet National Map Accuracy standards. This information may be updated, corrected, or otherwise modified without notification. For additional information about this data contact the Deschutes National Forest at 541-383-5300.

Snowshoers and Snow Hikers: Where available please use designated snowshoe trails. These are marked with blue diamonds with a yellow snowshoe in the center. If using designated ski trails please avoid walking on set ski tracks.

