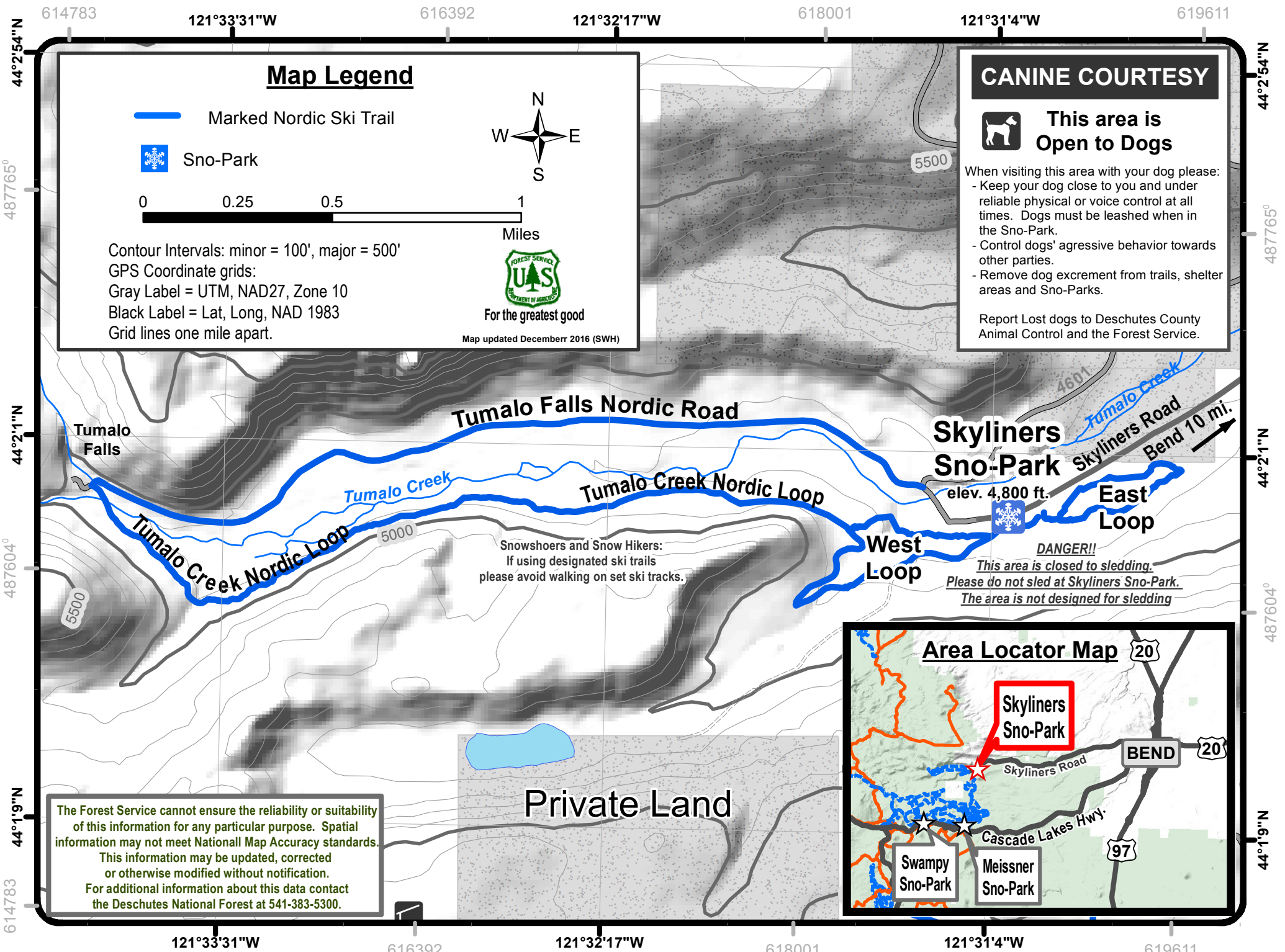




Skyliners Sno-Park Nordic Trails



Map Legend

-  Marked Nordic Ski Trail
-  Sno-Park



For the greatest good

Map updated Decemerr 2016 (SWH)

Contour Intervals: minor = 100', major = 500'
 GPS Coordinate grids:
 Gray Label = UTM, NAD27, Zone 10
 Black Label = Lat, Long, NAD 1983
 Grid lines one mile apart.

CANINE COURTESY



This area is Open to Dogs

- When visiting this area with your dog please:
- Keep your dog close to you and under reliable physical or voice control at all times. Dogs must be leashed when in the Sno-Park.
 - Control dogs' aggressive behavior towards other parties.
 - Remove dog excrement from trails, shelter areas and Sno-Parks.

Report Lost dogs to Deschutes County Animal Control and the Forest Service.

Snowshoers and Snow Hikers:
 If using designated ski trails
 please avoid walking on set ski tracks.

Skyliners Sno-Park
 elev. 4,800 ft.

Skyliners Road
 Bend 10 mi.

West Loop

East Loop

DANGER!!
This area is closed to sledding.
Please do not sled at Skyliners Sno-Park.
The area is not designed for sledding

Private Land

The Forest Service cannot ensure the reliability or suitability of this information for any particular purpose. Spatial information may not meet National Map Accuracy standards. This information may be updated, corrected or otherwise modified without notification. For additional information about this data contact the Deschutes National Forest at 541-383-5300.

