




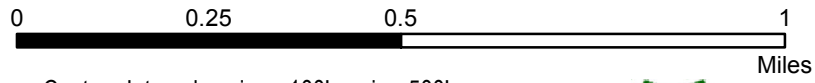


Vista Butte Sno-Park Nordic Trails

609955 121°37'11"W 611564 121°35'57"W 613173

Map Legend

-  Marked Nordic Ski Trail
-  Snowshoe Trail
-  Marked Snowmobile Trail
-  Shelter - No Camping
-  Sno-Park



Contour Intervals: minor=100', major=500'
 GPS Coordinate grids:
 Gray Label = UTM, NAD27, Zone 10
 Black Label = Lat, Long, NAD 1983



Map updated November 2016 (SWH)

AREA NOTICE

Area and Trails Closed to Dogs

Dogs are prohibited in the following winter recreation areas: Dutchman Flat, Swampy Lakes, Meissner and Vista Butte trail Systems. Areas south of Cascade Lakes Hwy and in the Skyliner area are open to Dogs.

Reasons for the Closure are:

- To prevent collisions between dogs and skiers on trails.
- To reduce sanitation problems on trails and at shelters.
- To reduce conflicts between users over dog behavior.

Exception:
 With a permit, controlled working dogs in harness are allowed on groomed snowmobile trails only. For permits and further details contact the Bend-Fort Rock Ranger Station.

487282°

487282°

43°59'23"N

43°59'23"N

487121°

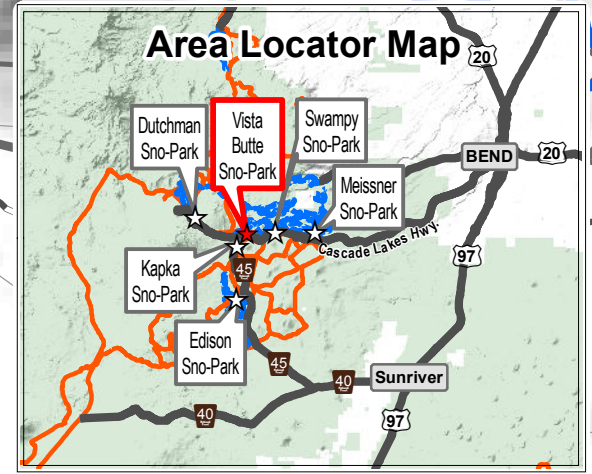
487121°

Mt Bachelor 1 mi.

Bend 15 mi.

Sunier 14 mi.

The Forest Service cannot ensure the reliability or suitability of this information for any particular purpose. Spatial information may not meet National Map Accuracy standards. This information may be updated, corrected or otherwise modified without notification. For additional information about this data contact the Deschutes National Forest at 541-383-5300.



609955 121°37'11"W 611564 121°35'57"W 613173