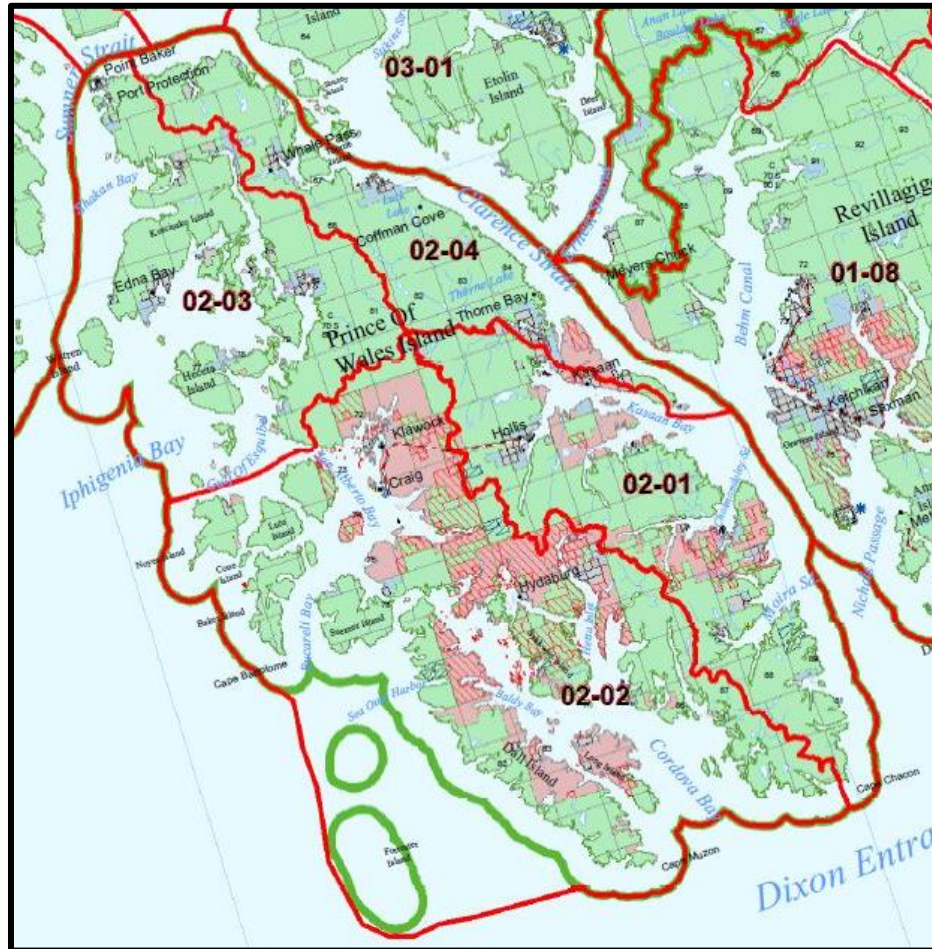




Outfitter and Guide Use on Forest Service Land Prince of Wales Island

The Forest Service authorizes outfitter and guiding services to provide for public health and safety and foster successful small businesses consistent with the Forest Plan. Based on results of the Forest Service's National Visitor Use Monitoring (NVUM) program and supplemental survey results (White and Stynes, 2010), almost half (49.7 percent) of non-resident visits to the Tongass National Forest involved the use of a guide or outfitter at some point, with local cruises, wildlife viewing, and flightseeing reported most frequently.

From 2013-2015, outfitter and guiding companies led an average of 620,303 visitors a year to sites on the Tongass National Forest. The Juneau Ranger District accounted for 92 percent of the averaged total, with 72 percent of clients visiting the Mendenhall Glacier. Guided visits to Prince of Wales Island over the same period averaged 2,687 clients annually representing 5% of guided use on the Tongass when the Juneau Ranger District total are excluded.



POW Total	2013	2014	2015	3-yr avg
Freshwater Fishing	0	4	0	1
Black Bear Hunting	166	50	69	95
Deer Hunting	0	19	5	8
Remote Nature Tours	2,974	2,279	1,255	2,169
Road-based Wildlife Viewing	0	44	1,195	413
Total	3,140	2,396	2,524	2,687

	2013	2014	2015	3-yr avg
GUA02-01				
Freshwater Fishing	0	4	0	1
Black Bear Hunting	90	40	20	50
Deer Hunting	0	19	5	8
Remote Setting Nature Tours	1,927	1,361	477	1,255
Road-based Wildlife Viewing	0	44	1,195	413
GUA Subtotal	2,017	1,468	1,697	1,727
GUA 02-02				
Freshwater Fishing	0	0	0	0
Black Bear Hunting	18	0	12	10
Deer Hunting	0	0	0	0
Remote Setting Nature Tours	295	248	242	262
Road-based Wildlife Viewing	0	0	0	0
GUA Subtotal	313	248	254	272
GUA02-03				
Freshwater Fishing	0	0	0	0
Black Bear Hunting	44	7	37	29
Deer Hunting	0	0	0	0
Remote Setting Nature Tours	748	670	536	651
Road-based Wildlife Viewing	0	0	0	0
GUA Subtotal	792	677	573	681
GUA02-03				
Freshwater Fishing	0	0	0	0
Black Bear Hunting	14	3	0	6
Deer Hunting	0	0	0	0
Remote Setting Nature Tours	4	0	0	1
Road-based Wildlife Viewing	0	0	0	0
GUA Subtotal	18	3	0	7

