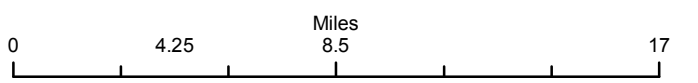
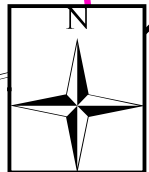
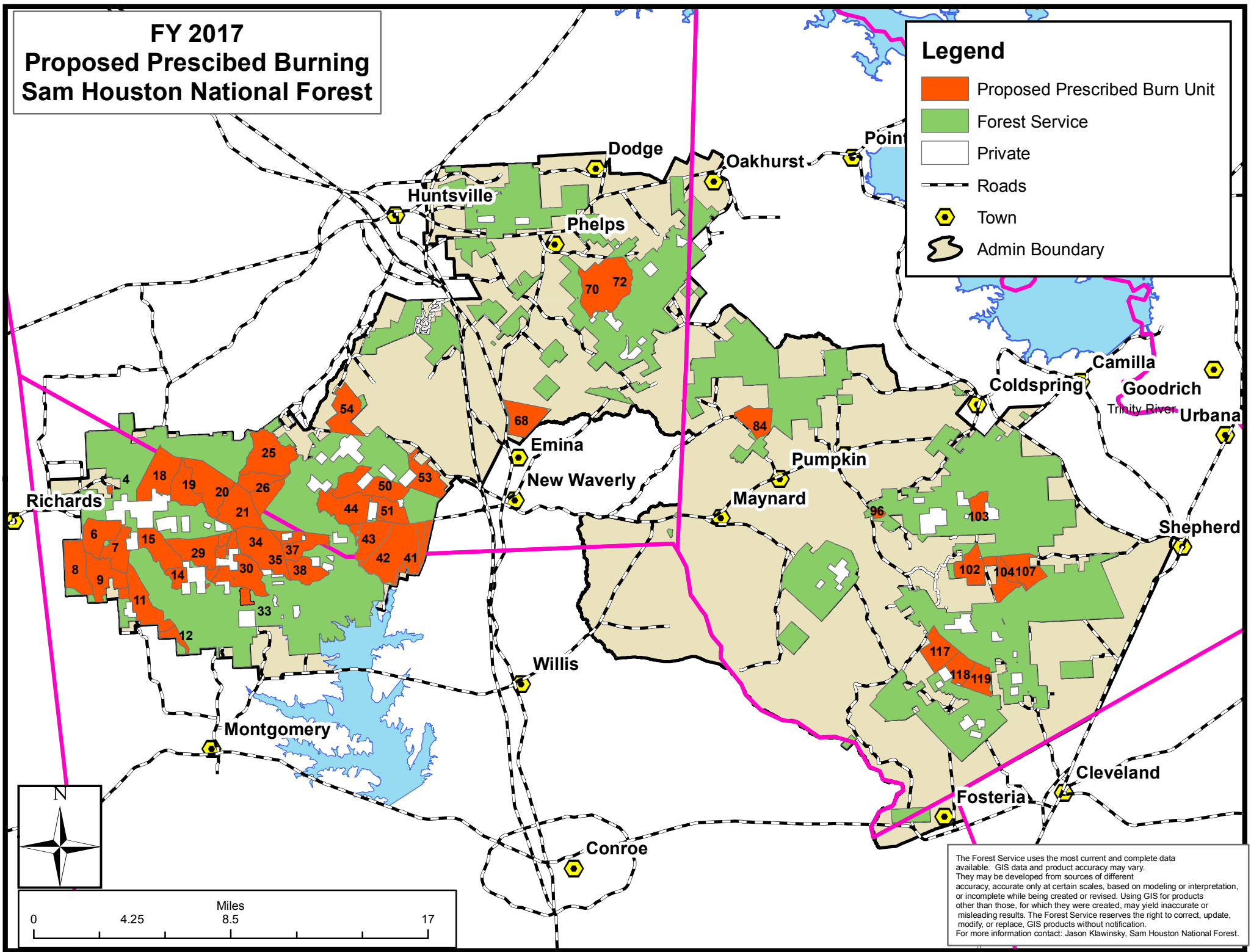


FY 2017 Proposed Prescribed Burning Sam Houston National Forest

Legend

- Proposed Prescribed Burn Unit
- Forest Service
- Private
- Roads
- Town
- Admin Boundary



The Forest Service uses the most current and complete data available. GIS data and product accuracy may vary. They may be developed from sources of different accuracy, accurate only at certain scales, based on modeling or interpretation, or incomplete while being created or revised. Using GIS for products other than those, for which they were created, may yield inaccurate or misleading results. The Forest Service reserves the right to correct, update, modify, or replace, GIS products without notification. For more information contact: Jason Klawinsky, Sam Houston National Forest.