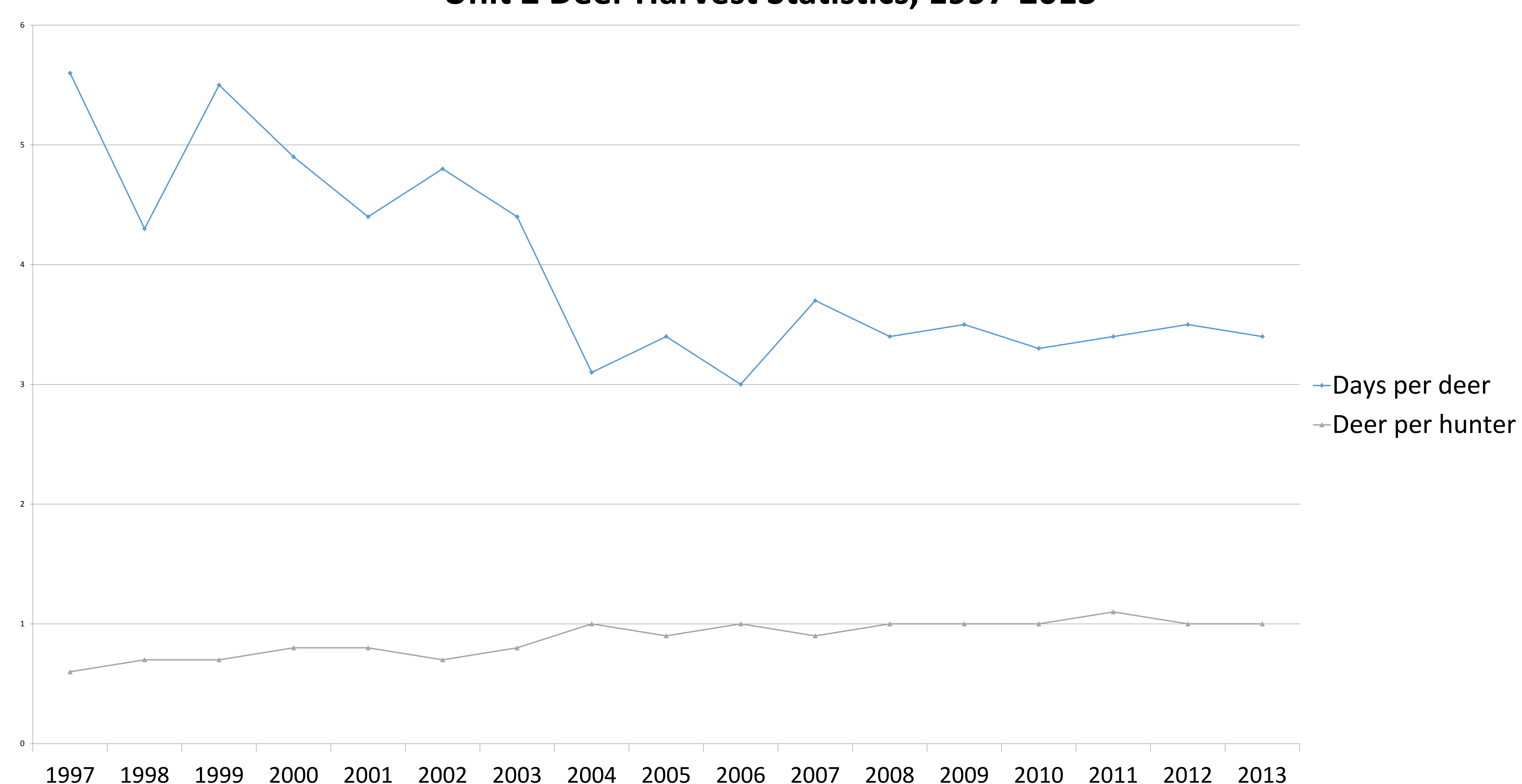
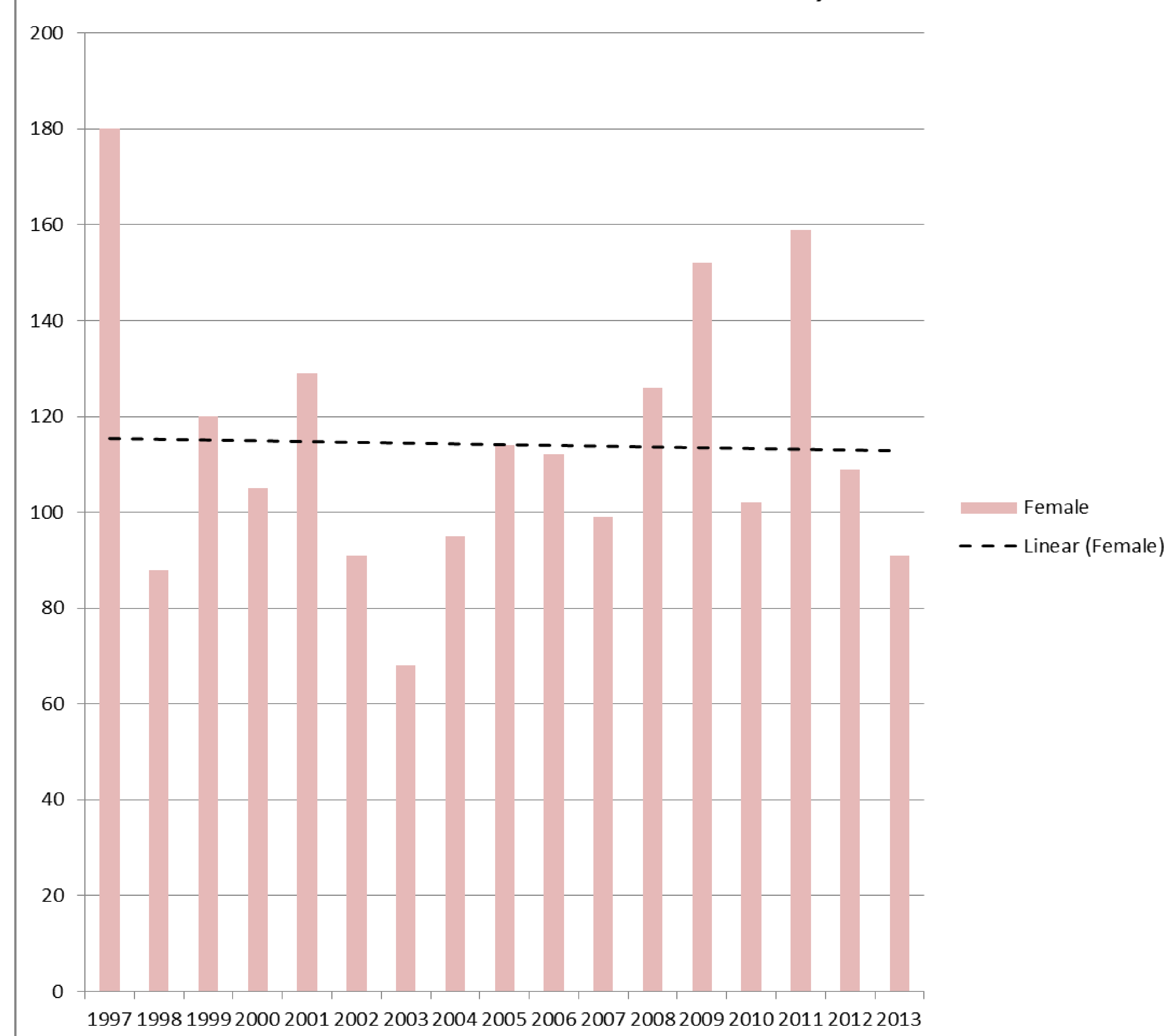


Unit 2 Deer Harvest

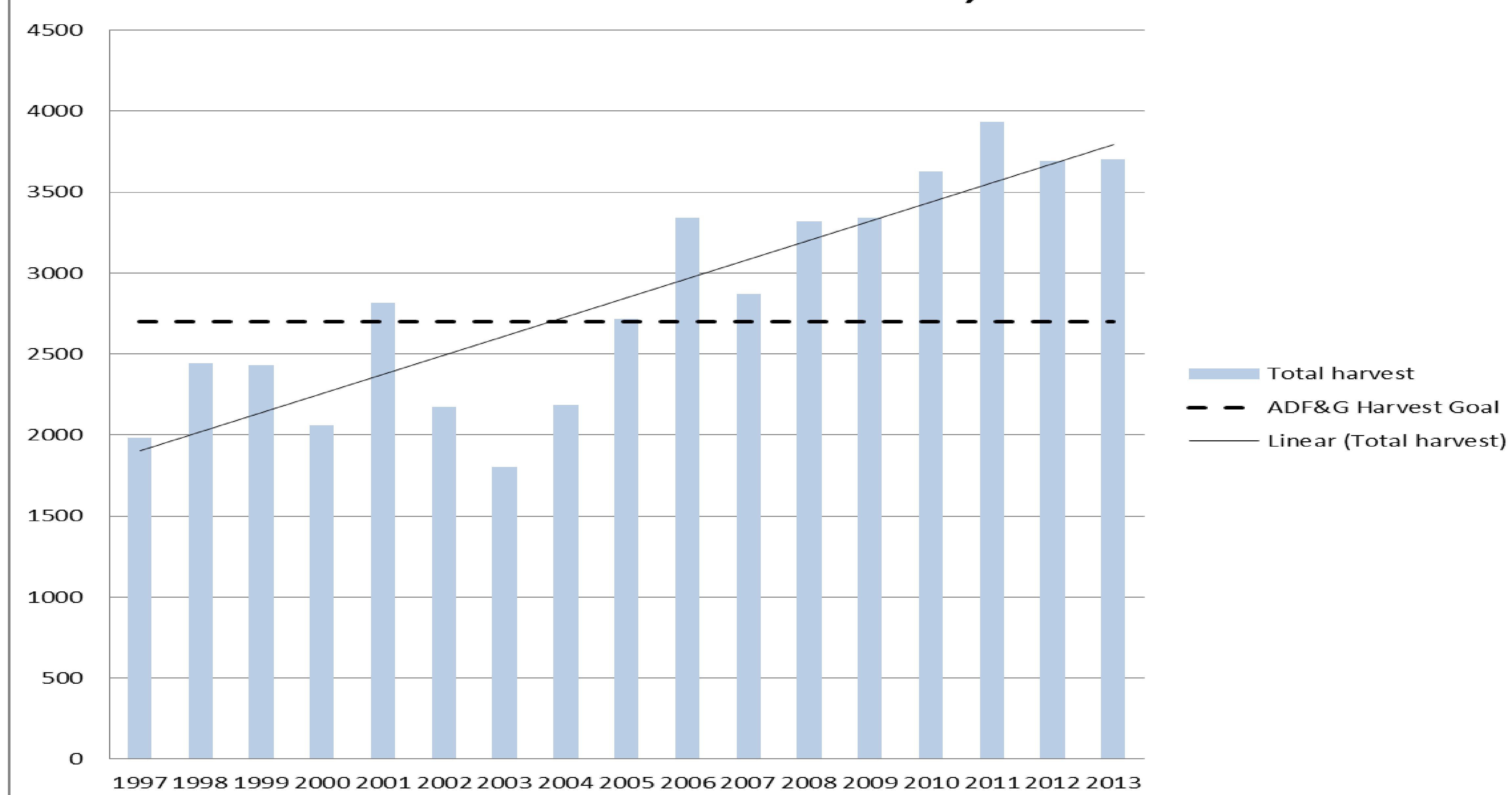
Unit 2 Deer Harvest Statistics, 1997-2013



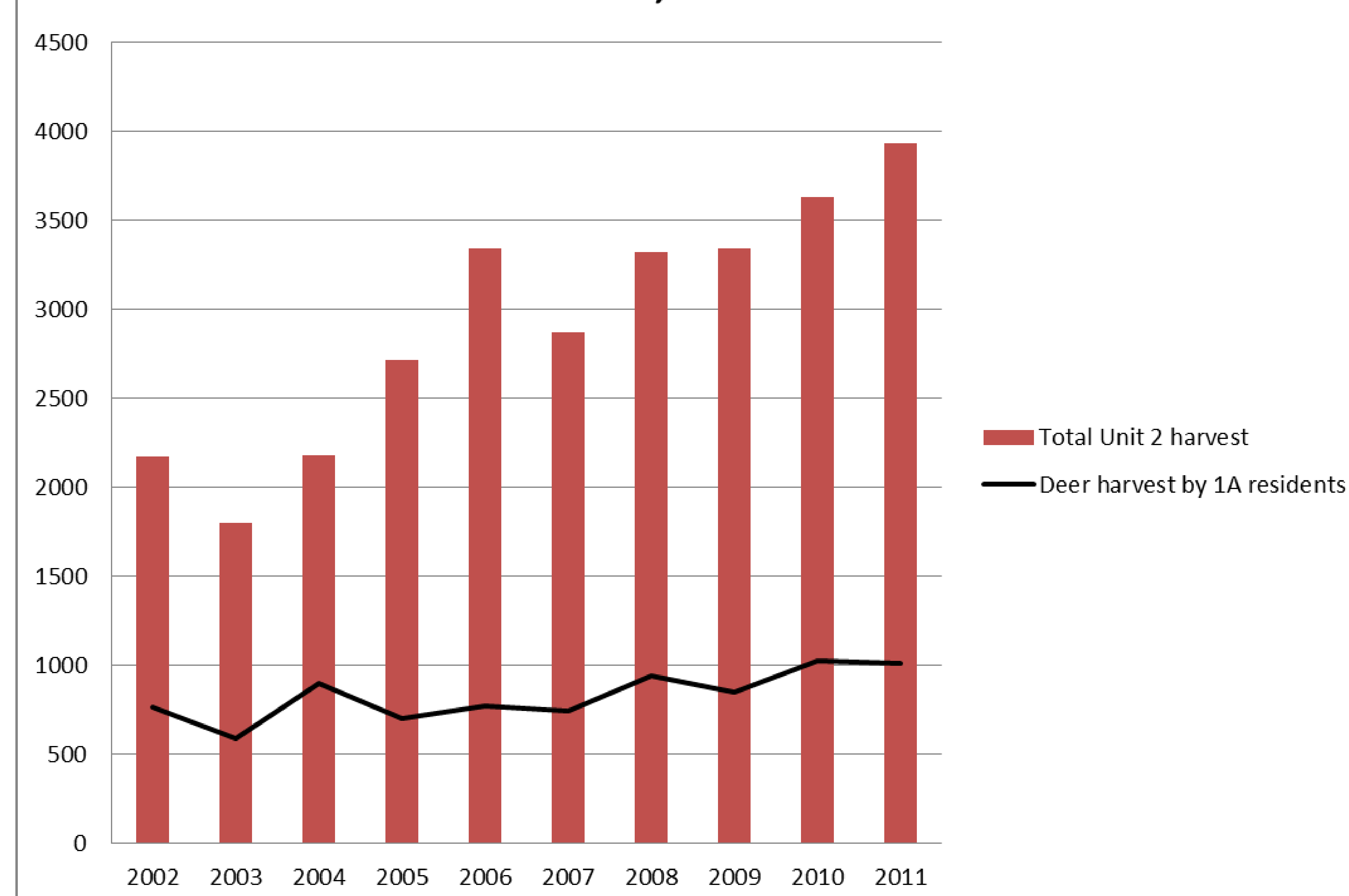
Unit 2 estimated female deer harvest, 1997-2013



Estimated Unit 2 Deer Harvest, 1997-2013



Harvest by 1A residents compared to Unit 2 total harvest, 2002-2011



Deer harvest by month in Unit 2, 2003-2013

	July	August	Sept	October	Nov	Dec	Totals
2003	78	284	287	357	566	49	1621
2004	68	310	240	481	811	61	1971
2005	210	485	393	503	895	76	2562
2006	192	501	459	541	1333	152	3178
2007	128	428	300	450	1217	121	2644
2008	116	494	362	522	1525	167	3186
2009	122	488	263	510	1655	183	3221
2010	156	471	281	595	1669	178	3350
2011	230	632	295	595	1932	197	3881
2012	143	460	302	556	1878	315	3654
2013	163	484	282	460	2105	174	3668