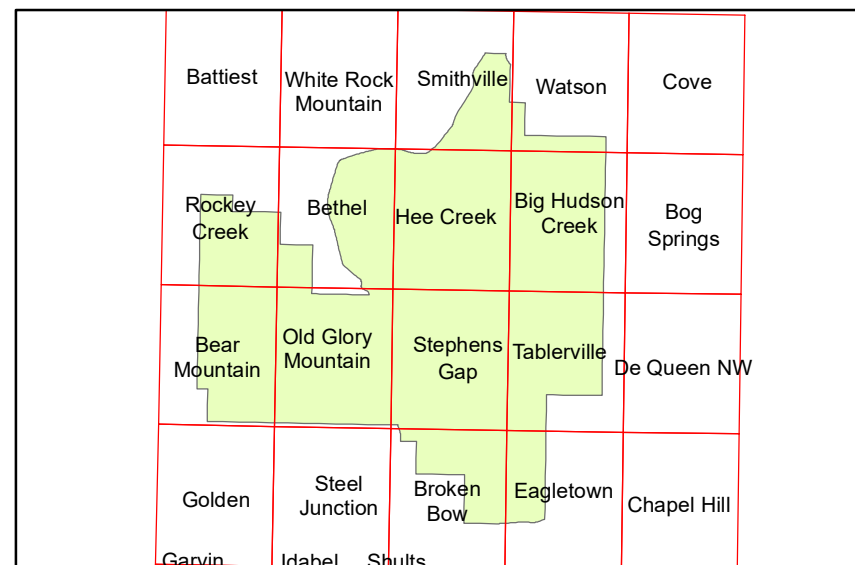


MAP M

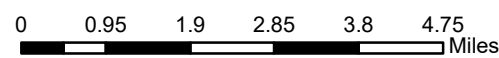
- Big Game Retrieval Route : : :
- Recreation Site Types
- BOATING SITE
 - CAMPGROUND
 - GROUP CAMPGROUND
 - HORSE CAMP
 - INFO SITE/FEE STATION
 - INTERPRETIVE SITE (MAJOR)
 - INTERPRETIVE SITE (MINOR)
 - PICNIC SITE
 - SWIMMING SITE
 - TARGET RANGE
 - TRAILHEAD
- Cities
- Cities
- Lakes
- Lakes
- Streams
- Streams
- Ranger District
- Ranger District
- Ouachita National Forest
- Ouachita National Forest
- Roads
- Roads Open to All Vehicles, Yearlong
 - Roads Open to All Vehicles, Seasonal
 - Roads Open to Highway Legal Vehicles, Only Yearlong
 - Roads Open to Highway Legal Vehicles, Seasonal
 - State or US Highway
 - Other Public Roads
- Trails
- Special Designation, Yearlong
 - Special Designation, Seasonal
 - Trails Open to Motorcycles Only, Yearlong



INDEX TO TOPOGRAPHIC MAPS



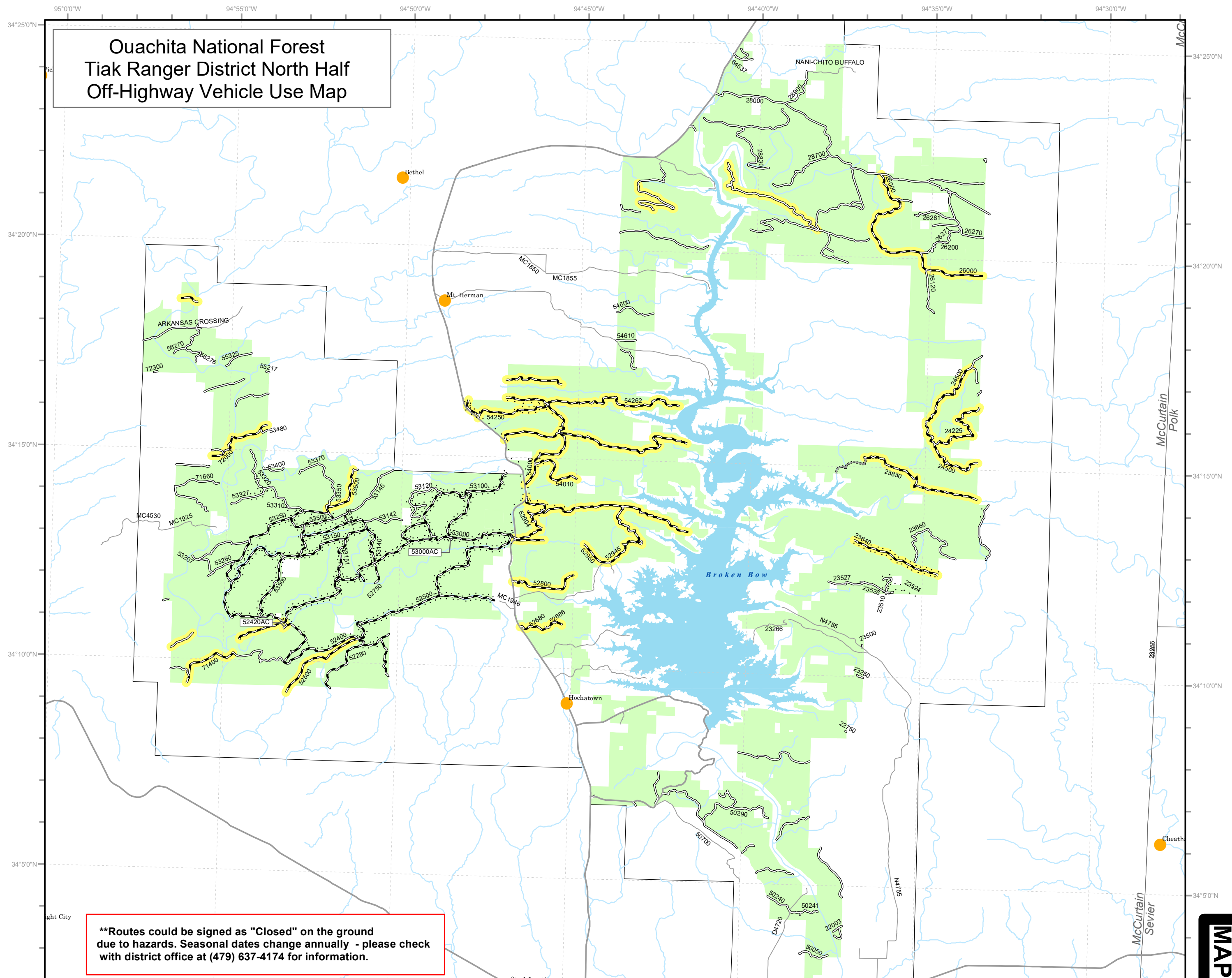
Topographic maps are available from the Branch of Distribution
 U.S. Geological Survey, Box 25286, Denver Federal Center, Denver, CO 80225
 or
www.usgs.gov



August 2020



****Routes could be signed as "Closed" on the ground due to hazards. Seasonal dates change annually - please check with district office at (479) 637-4174 for information.**



MAP M