

Daniel Boone National Forest



Celebrating 80 years





On February 23, 1937, President Franklin D. Roosevelt signed a proclamation to officially establish a national forest in Kentucky. The forest was originally named the Cumberland National Forest.



Parade in Clark County, KY, 1936



*Forest Service
vehicle on
Buck Knob
road, 1952*

As early as 1933, the federal government began acquiring land for what would become the Cumberland National Forest. When first established, the forest consisted of nearly 350,000 acres in 16 Kentucky counties.

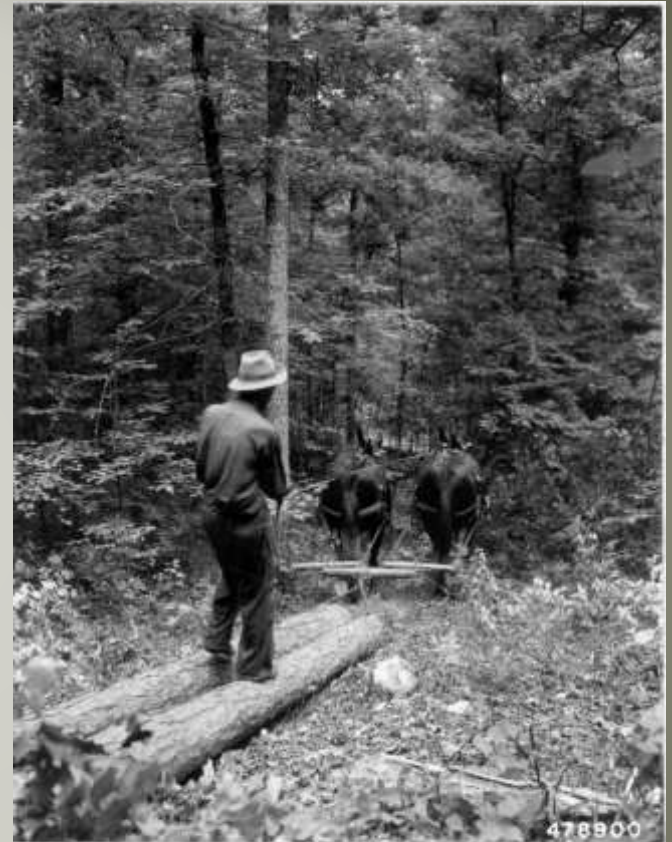
Today, nearly 709,000 acres of national forest land are managed across 21 counties.



Some of the largest tracts to become national forest land were acquired from coal and lumber companies. In many cases, the land was depleted of its natural resources before sold to the federal government. The U.S. Forest Service planted trees to restore vegetation and water quality in these areas.

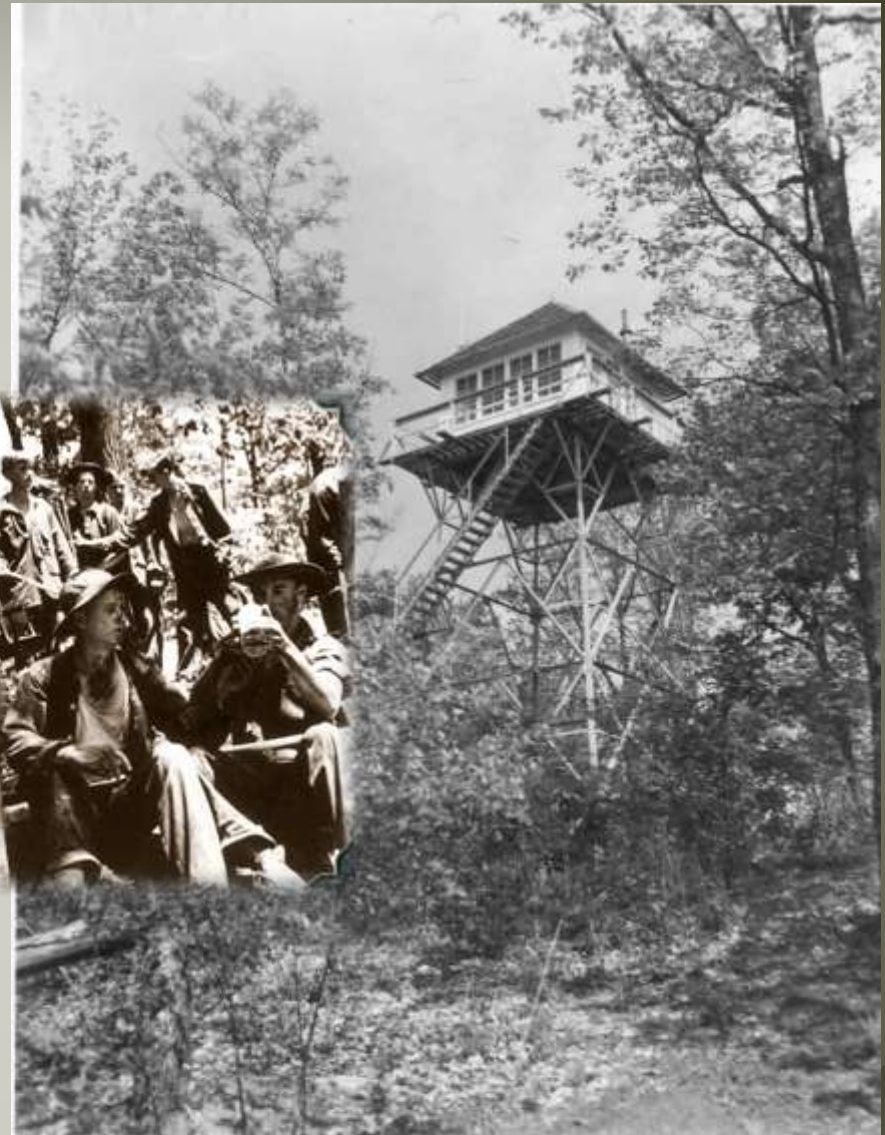


Once the land became part of the national forest system, timber was managed for sustainable use to meet the needs of a growing nation.



Skidding shortleaf pine logs with mules, July 1955

**Fighting forest fires
continues to be a land
management priority for
the U.S. Forest Service.**



*Stephens Knob Lookout Tower
near Jellico, 1954*

Jellico. Spring, 1954.



Alum Ford, Cumberland River 1961

The forest quickly became a favorite destination for visitors seeking outdoor recreation.



Fisherman on Rockcastle River



Campers in Red River Gorge

Civilian Conservation Corps

From 1933 to 1943, as part of the New Deal, at least 15 CCC camps were operated on federal land that became the Cumberland National Forest. The Forest Service provided technical supervision for these camps, which housed up to 200 men. The men built bridges, fire towers, roads and many other structures that exist today.



Cooperative Wildlife Program



In October 1940 a cooperative wildlife management plan was signed with the state of Kentucky. The plan established the Beaver Creek Wildlife Management Area in McCreary County.

Today, the Daniel Boone National Forest manages five wildlife management areas in cooperation with the Kentucky Department of Fish and Wildlife Resources.

Forest Name Change



In 1966 the Cumberland National Forest was renamed as the Daniel Boone National Forest.

Actor Fess Parker, who played Daniel Boone in a hit TV series during the 1960s, was special guest speaker at a formal dedication ceremony for the forest name change.



Dedication ceremony at Levi Jackson State Park, July 1966.

Redbird Purchase Unit

The Redbird Purchase Unit was established in 1964 as part of the Daniel Boone National Forest. Land acquisitions for the unit were conducted under authority of the Weeks Act of 1911.

The initial land purchase for the Redbird Purchase Unit was 60,000 acres purchased from the Red Bird Timber Corporation. This land had previously belonged to Ford Motor Company, when hardwood was used for automobile body parts and wheel spokes.



A treasury check for \$2,020,000 is transferred to Red Bird Timber Corporation.

Cave Run Lake

Authorized by the Flood Control Act of June 22, 1936, construction of the Cave Run Lake project began in June 1965 and became operational in February 1974.

Cave Run Lake has 8,270 acres of water surface. In addition to flood control, the lake serves as a local water supply, provides outdoor recreation opportunities, and offers habitat for fish and wildlife.



Twin Knobs Campground

Red River Gorge Geological Area



1974 – 29,000 acres of national forest land in the gorge is designated as a national geological area.

1976 – The gorge is designated as a National Natural Landmark.

1985 - Clifty Wilderness is established at 12,646 acres.

1993 – Congress designates 19.4 miles of the Red River as a National Wild and Scenic River.



2002 - The Federal Highway Administration adopts 46 miles in and around the Red River Gorge as a National Scenic Byway.

2003 - 37,000 acres in and around the Red River Gorge becomes a National Archaeological District and listed on the National Register of Historic Places.

Laurel River Lake

The U.S. Army Corps of Engineers began construction for the dam in December 1964. The lake was impounded in 1974. The dam's power plant began producing electricity in 1977.



This 5,600-acre lake provides hydroelectric power, safe drinking water for local communities, and recreation opportunities for the public.

Job Corps



Since 1965 the Daniel Boone National Forest has hosted and operated Job Corps Civilian Conservation Centers. The centers at Frenchburg, Pine Knot and Great Onyx provide education and job skills training for 16-24 year old students.

**80 Years
of
Caring for the Land
and
Serving People**

Daniel Boone National Forest

A dark silhouette of a mountain range is visible in the bottom right corner of the slide, partially overlapping the text.