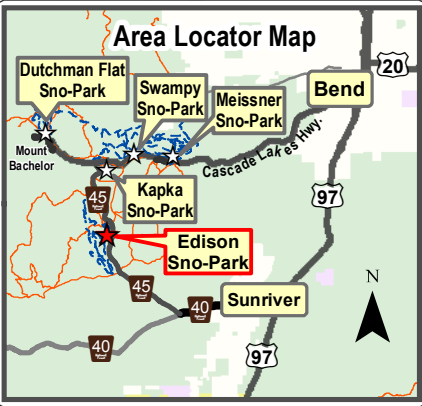


Edison Sno-Park Ski/Snowshoe Trails

608710 121°38'24"W 610319 121°37'11"W 611929 121°35'57"W 613538



Download a PDF version of this map for your cell phone by scanning this QR code and use the Avenza Maps app. Find where you are on the map by following the little blue dot.

Avenza Map Download
Edison Sno-Park (500 KB)
Available for Android or iPhone

CANINE COURTESY

This area is Open to Dogs

When visiting this area with your dog please:

- Keep your dog close to you and under reliable physical or voice control at all times. Dogs must be leashed when in the Sno-Park.
- Control dogs' aggressive behavior towards other parties.
- Remove dog excrement from trails, shelter areas and Sno-Parks.

Report Lost dogs to Deschutes County Animal Control and the Forest Service.

The Forest Service cannot assure the reliability or suitability of this information for any particular purpose. Spatial information may not meet National Map Accuracy standards. This information may be updated, corrected, or otherwise modified without notification. For additional information about this data contact the Deschutes National Forest at 541-383-5300.

Map Legend

- Marked Nordic Ski Trail
- Snowshoe Trail
- Marked Snowmobile Trail
- Snowmobile Trail Junction Number
- Shelter - No Camping
- Sno-Park
- Ski Junction Number
- Snowshoe Junction Letter

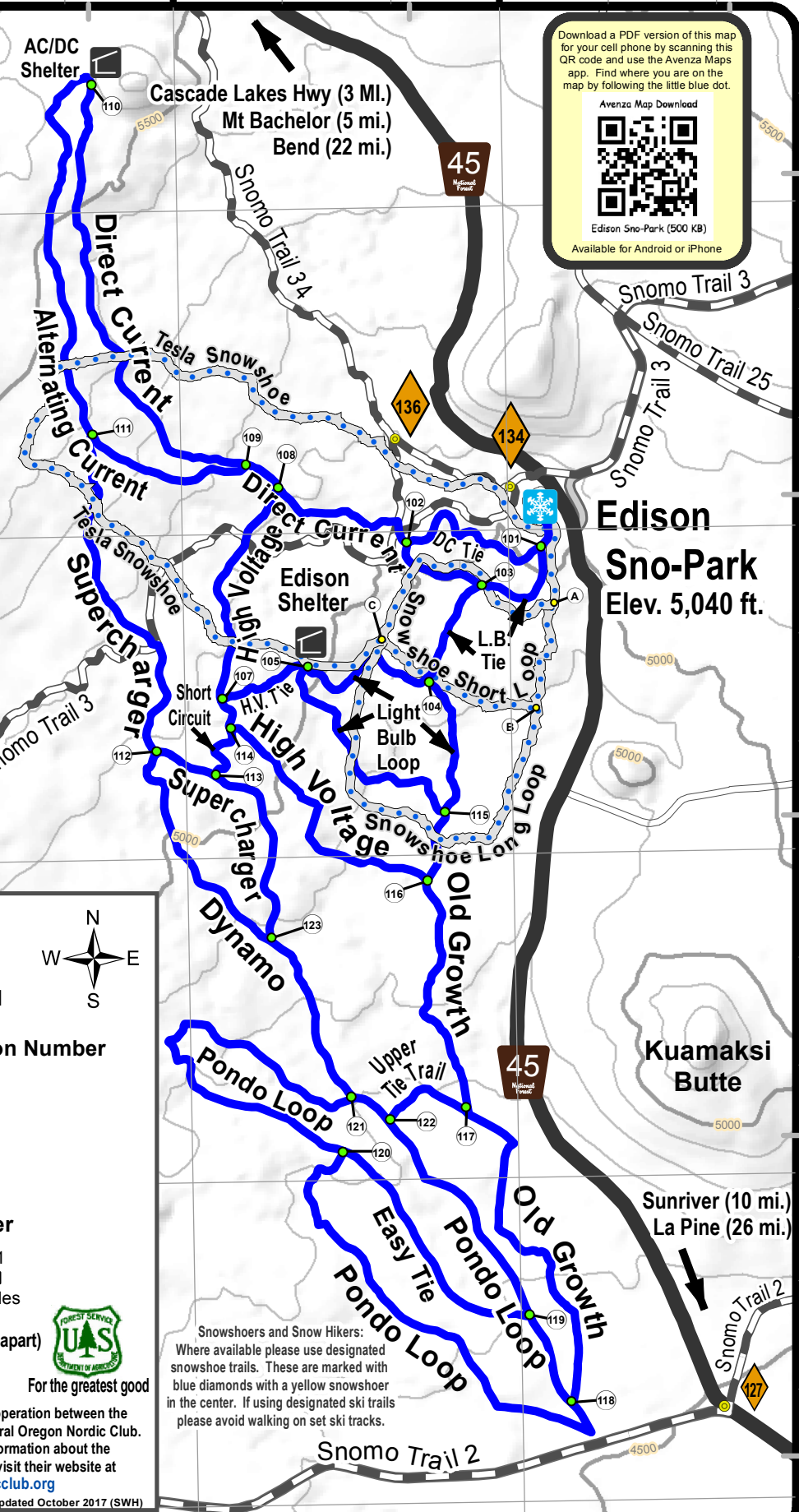
0 0.5 1 Miles

Contour interval: minor = 100', major = 500'
GPS coordinate Grids: (grid lines are one mile apart)
Gray Label = UTM, NAD27, Zone 10
Black Label = Lat, Long, NAD1983

For the greatest good

Trails Maintained through cooperation between the U.S. Forest Service and the Central Oregon Nordic Club. For more trail news and information about the Central Oregon Nordic Club visit their website at www.conordicclub.org

Central Oregon Nordic Club
Map updated October 2017 (SWH)



Edison Sno-Park
Elev. 5,040 ft.

Kuamaksi Butte

Sunriver (10 mi.)
La Pine (26 mi.)

Snowshoers and Snow Hikers: Where available please use designated snowshoe trails. These are marked with blue diamonds with a yellow snowshoer in the center. If using designated ski trails please avoid walking on set ski tracks.

486697 43°56'45"N
486536 43°55'52"N
486375 43°55'0"N
486214 43°54'17"N
486053 43°53'14"N

486697 43°56'45"N
486536 43°55'52"N
486375 43°55'0"N
486214 43°54'17"N
486053 43°53'14"N

608710 121°38'24"W 610319 121°37'11"W 611929 121°35'57"W 613538