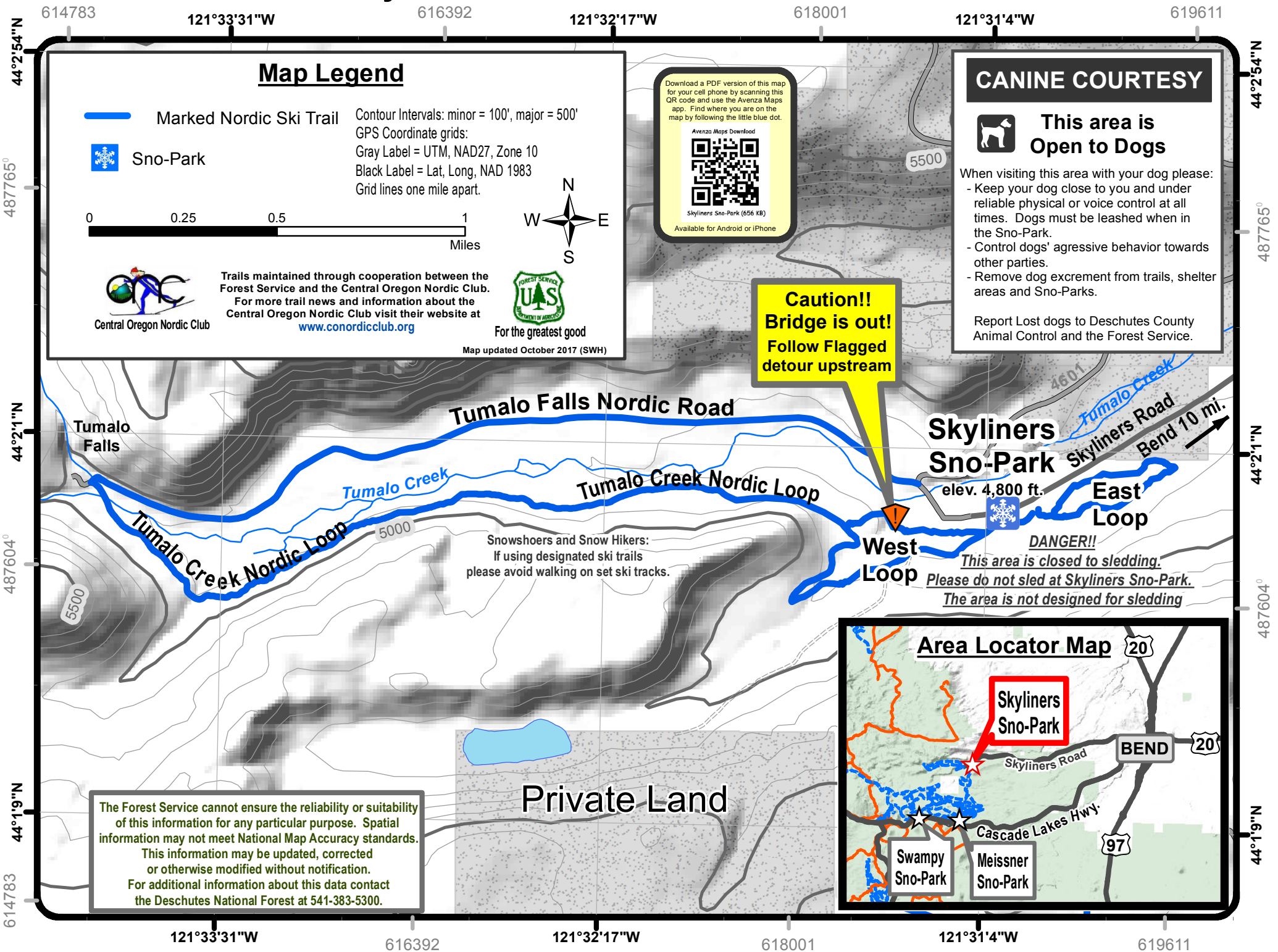


Skyliners Sno-Park Ski/Snowshoe Trails



Map Legend



Marked Nordic Ski Trail



Sno-Park

Contour Intervals: minor = 100', major = 500'
 GPS Coordinate grids:
 Gray Label = UTM, NAD27, Zone 10
 Black Label = Lat, Long, NAD 1983
 Grid lines one mile apart.



Trails maintained through cooperation between the Forest Service and the Central Oregon Nordic Club. For more trail news and information about the Central Oregon Nordic Club visit their website at www.conordicclub.org



For the greatest good

Map updated October 2017 (SWH)

Download a PDF version of this map for your cell phone by scanning this QR code and use the Avenza Maps app. Find where you are on the map by following the little blue dot.

Avenza Maps Download
 Skyliners Sno-Park (656 KB)
 Available for Android or iPhone

CANINE COURTESY



This area is Open to Dogs

- When visiting this area with your dog please:
- Keep your dog close to you and under reliable physical or voice control at all times. Dogs must be leashed when in the Sno-Park.
 - Control dogs' aggressive behavior towards other parties.
 - Remove dog excrement from trails, shelter areas and Sno-Parks.
- Report Lost dogs to Deschutes County Animal Control and the Forest Service.

Caution!!
Bridge is out!
 Follow Flagged detour upstream

Tumalo Falls

Tumalo Falls Nordic Road

Skyliners Sno-Park
 elev. 4,800 ft.

Skyliners Road
 Bend 10 mi.

Tumalo Creek Nordic Loop

Tumalo Creek

Tumalo Creek Nordic Loop

East Loop

West Loop

DANGER!!

*This area is closed to sledding.
 Please do not sled at Skyliners Sno-Park.
 The area is not designed for sledding*

Snowshoers and Snow Hikers:
 If using designated ski trails
 please avoid walking on set ski tracks.

Private Land

The Forest Service cannot ensure the reliability or suitability of this information for any particular purpose. Spatial information may not meet National Map Accuracy standards. This information may be updated, corrected or otherwise modified without notification. For additional information about this data contact the Deschutes National Forest at 541-383-5300.

