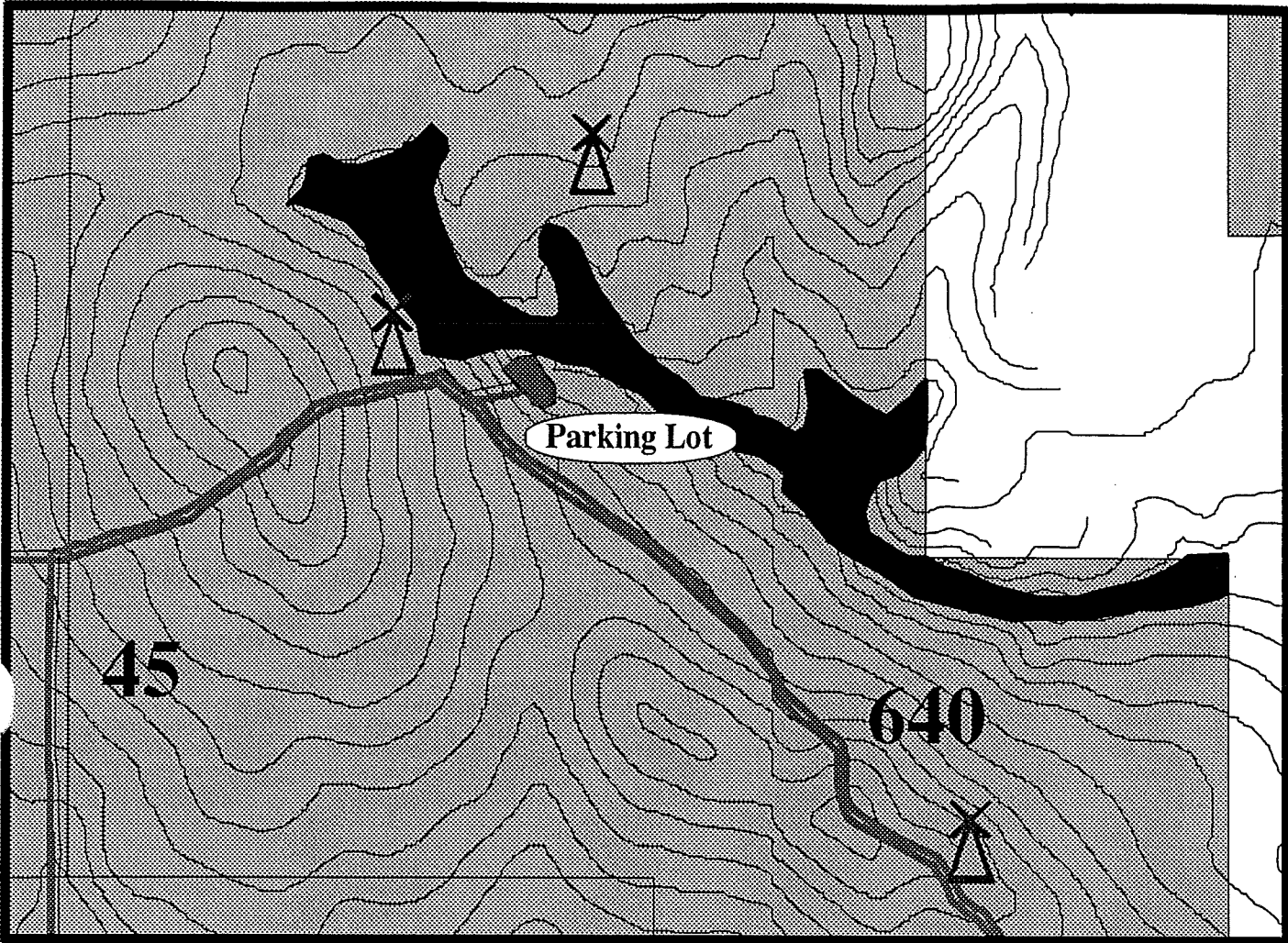

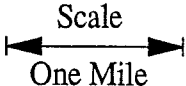







Exhibit A

Main Draw Off-Highway Vehicle Area



Off-Highway Vehicle Area Is Open November 1 - April 9.

- | | | | | |
|---|--|---|---|---------------------------------|
|  | Off-Highway Vehicles Allowed only in Draw |  |  | County Roads |
|  | Public Land | |  | Pawnee National Grassland Roads |
|  | Private Land (Note private land at east end of draw) | |  | Windmills |

- OHV's are allowed only in the draw.
- Licensed (street legal) motorized vehicles may travel anywhere on the numbered roads, but not cross-country or on routes that are not numbered or closed to the public.
- OHV's must display a State OHV registration sticker.