

EXPLANATION OF LEGEND ITEMS

Roads Open to Highway Legal Vehicles Only:

These roads are open only to motor vehicles licensed under State law for general operation on all public roads within the State.

Roads Open to All Vehicles:

These roads are open to all motor vehicles, including smaller off-highway vehicles that may not be licensed for highway use (but not to oversized or overweight vehicles under State traffic law).

Trails Open to All Vehicles:

These trails are open to all motor vehicles, including both highway legal and nonhighway legal vehicles.

Trails Open to Vehicles 50" or Less in Width:

These trails are open only to motor vehicles less than 50 inches in width at the widest point on the vehicle.

Trails Open to Motorcycles Only:

These trails are open only to motorcycles. Sidecars are not permitted.

Special Vehicle Designation:

This symbol indicates the road or trail is open to classes of vehicles other than those listed above. (See Special Vehicle Designation Statement)

Seasonal Designation:

This symbol, used in conjunction with one of the other road or trail symbols, indicates that the road or trail is open only during April 15 through December 15.

Other Public Roads and Trails:

Highways, U.S. State
Other Public Roads
Other Public Trails

These symbols are used to show routes the Forest Service does not have jurisdiction over and has not designated for motorized use. These symbols are part of the reference layers showing connections to towns and cities outside the forest boundary.

Short Route Identifier:

70333

This symbol is used for routes that are too short to show an actual symbol type on the map. The symbol contains the number of the road or trail. Users should refer to the corresponding number in the **Short Route Table** for designation information.

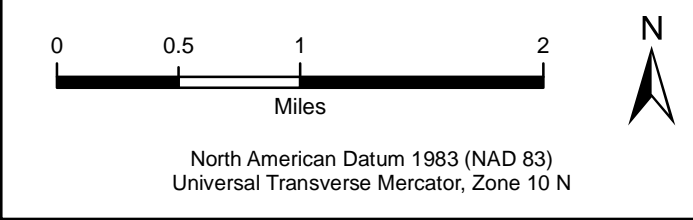
Motorized Trail Access:

M

This symbol indicates a trailhead for access to a motorized route. Not all motorized routes have trailheads and those that do may range from primitive to developed.

Legend

- Roads Open to Highway Legal Vehicles
- Roads Open to All Vehicles
- Trails Open to All Vehicles
- Trails Open to Vehicles 50" or Less in Width
- Trails Open to Motorcycles Only
- Special Vehicle Designation
- Seasonal Designation (Open April 15 - Dec. 15)
- Highways, U.S. State
- Other Public Roads
- Short Route Identifier
- FS Campground
- Picnic Area
- Motorized Trailhead
- Information Site
- Forest or Unit Boundary
- National Forest System Lands
- Non-National Forest System Lands within the National Forest
- Wilderness Areas
- Township and Range Lines
- Section Lines
- Large Lakes



Special Vehicle Designation Statement

Special Vehicle Designation Routes are trails with the following vehicle designations: Open to All Highway Legal Vehicles, Open to Wheeled Non-Highway Legal Vehicles Wider than 50 inches.

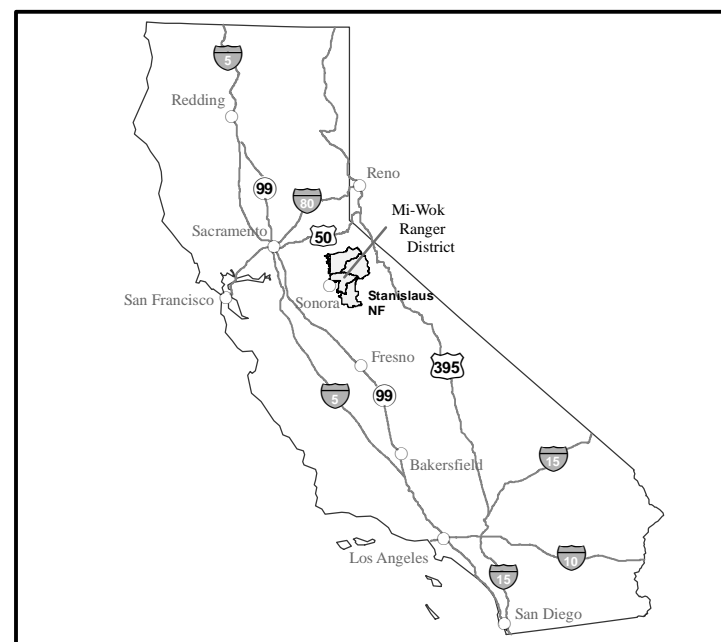
[Signature]
Acting Forest Supervisor, Stanislaus National Forest

tread lightly!
LEAVING A GOOD IMPRESSION

Motor Vehicle Use Map Stanislaus National Forest Mi-Wok Ranger District

California Forest Service 2017
United States Department of Agriculture

VICINITY MAP



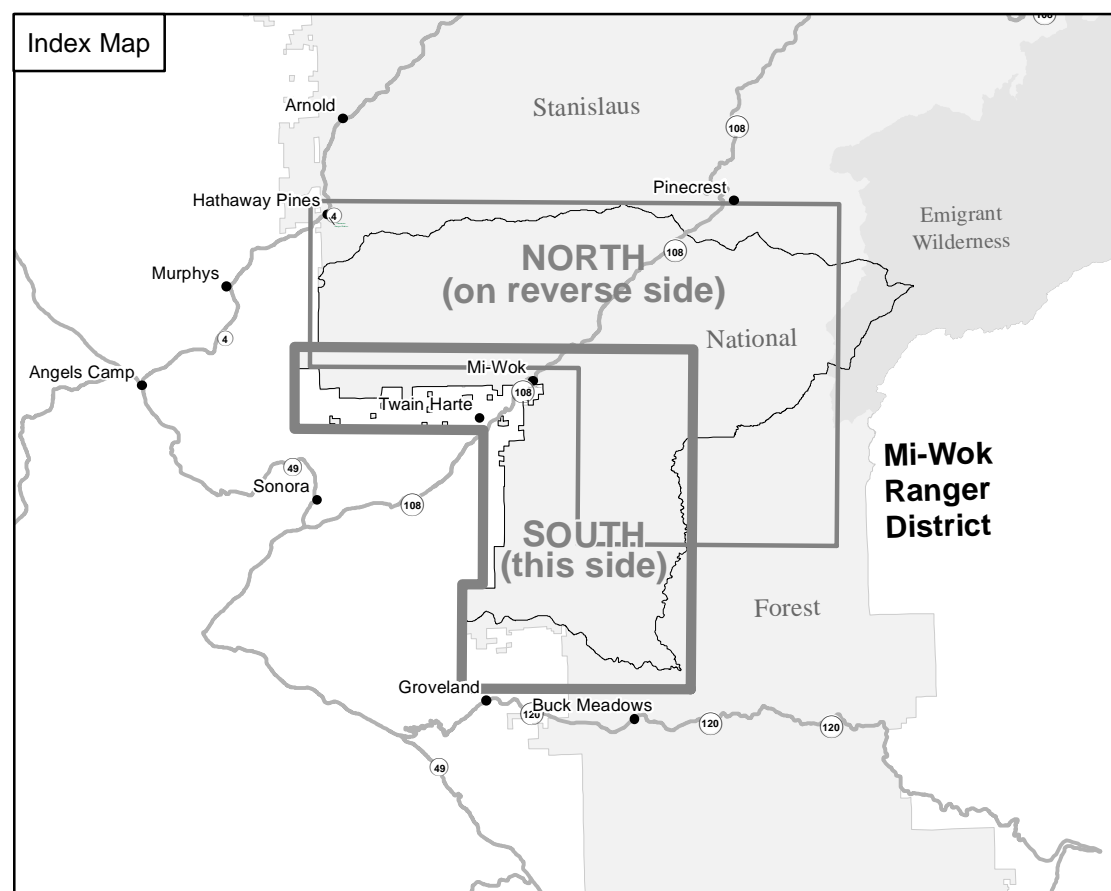
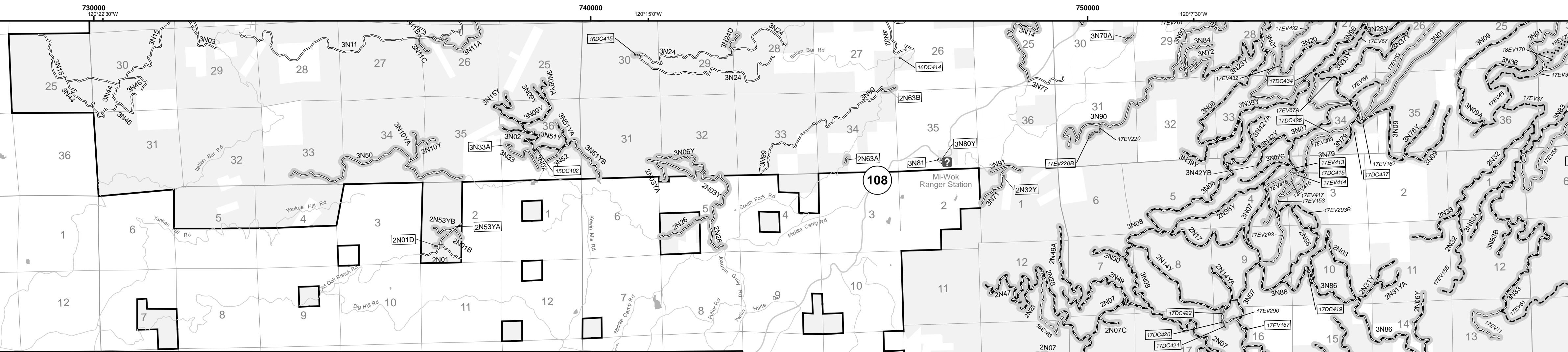
PURPOSE AND CONTENTS OF THIS MAP

The designations shown on this motor vehicle use map are effective as of the date on the front cover and will remain in effect until superseded by the next year's motor vehicle use map. It is the responsibility of the user to acquire the current MVUM. This map shows the National Forest System roads, National Forest System trails, and the areas on National Forest System lands in the Mi-Wok Ranger District that are designated for motor vehicle use pursuant to 36 Code of Federal Regulations (CFR) 212.51. This map also contains a list of those designated roads, trails, and areas; the types of vehicles that are allowed on each route and in each area; and any seasonal restrictions that apply on those routes and in those areas.

Designation of a road, trail, or area for motor vehicle use by a particular class of vehicle under 36 CFR 212.51 should not be interpreted as encouraging or inviting use or implying that the road, trail, or area is passable, actively maintained, or safe for travel. Motor vehicle designations include parking along designated roads and at facilities associated with designated routes when it is safe to do so and when not causing damage to National Forest System resources. Seasonal weather conditions and natural events may render designated roads and trails impassable for extended periods. Designated areas may contain dangerous or impassable terrain. Many designated roads and trails may be passable only by high-clearance vehicles or four-wheel-drive vehicles. Maintenance of designated roads and trails will depend on available resources, and many may receive little maintenance.

This motor vehicle use map identifies those roads, trails, and areas designated for the motor vehicle use under 36 CFR 212.51 for the purpose of enforcing the prohibition at 36 CFR 261.13. This is a limited purpose. The other public roads are shown for information and navigation purposes only and are not subject to designation under the Forest Service travel management regulation.

These designations apply only to National Forest System roads, National Forest System trails, and areas on National Forest System lands.



Short Routes						
Open to All Vehicles, April 15 - Dec. 15						
16DC400	17DC415	17EV160	17EV157	17EV414	17EV28A	
17EV413	17EV264					
Open to Vehicles 50 inches or Less in Width, April 15 - Dec. 15						
17EV162						
Trails						
Open to Highway Legal Vehicles, Year-round						
Open to Wheeled Vehicles Wider than 50 inches, Year-round						
16DC414						
Roads						
Open to Highway Legal Vehicles, April 15 - Dec. 15						
Open to All Vehicles, Year-round						
1N17A	1N18A	1N24A	1N48B	2N11D		
Open to All Vehicles, April 15 - Dec. 15						
1N01L	1N25A	1N28A	1N70YB	3N38YA		
Open to Highway Legal Vehicles, Year-round						
1N01J	1N10C	1S06B	2N53YA	3N45	3N80Y	
3N81						
Open to Highway Legal Vehicles, April 15 - Dec. 15						
2N01D	2N32Y	2N44A	2N63A	2N63B	3N10YA	
3N33A	3N70	3N70A				

OPERATOR RESPONSIBILITIES

Operating a motor vehicle on National Forest System roads, National Forest System trails, and in areas on National Forest System lands carries a greater responsibility than operating that vehicle in a city or other developed setting. Not only must you know and follow all applicable traffic laws, you need to show concern for the environment as well as other forest users. The misuse of motor vehicles can lead to the temporary or permanent closure of any designated road, trail, or area. As a motor vehicle operator, you are also subject to State traffic law, including State requirements for licensing, registration, and operation of the vehicle in question.

Motor vehicle use, especially off-highway vehicle use, involves inherent risks that may cause property damage, serious injury, and possibly death to participants. Drive cautiously and anticipate rough surfaces and features, such as snow, mud, vegetation, and water crossings common to remote driving conditions. By your participation, you voluntarily assume full responsibility for these damages, risks, and dangers. Take care at all times to protect yourself and those under your responsibility.

Much of the Stanislaus National Forest is remote. Medical assistance may not be readily available. Cellular telephones do not work in many areas of the Stanislaus National Forest. Take adequate food, water, first-aid supplies, and other equipment appropriate for the conditions and expected weather.

ALWAYS REMEMBER TO RESPECT PRIVATE LAND! PROTECT YOUR PRIVILEGE. STAY ON DESIGNATED ROADS AND TRAILS AND IN DESIGNATED AREAS.

Read and understand this map in its entirety. If you have questions please contact the Stanislaus National Forest Supervisor's Office or the Mi-Wok Ranger District Office for clarification.

As a motor vehicle operator on a National Forest System road, trail, or area, you must comply with this map, as well as all Federal, State, and local laws and regulations. Compliance with these rules is your responsibility.

PROHIBITIONS

It is prohibited to possess or operate a motor vehicle on National Forest System lands on the Stanislaus National Forest other than in accordance with these designations (36 CFR 261.13).

Violators of 36 CFR 261.13 are subject to a fine of up to \$5,000, imprisonment for up to 6 months, or both (18 U.S.C. 3571(e)). This prohibition applies regardless of the presence or absence of signs.

This map does not display nonmotorized uses, over-snow uses, or other facilities and attractions on the Stanislaus National Forest. Obtain forest visitor information from the local national forest office.

Designated roads, trails, and areas may also be subject to temporary, emergency closures. As a visitor, you must comply with signs notifying you of such restrictions. A national forest may issue an order to close a road, trail, or area on a temporary basis to protect the life, health or safety of forest visitors or the natural or cultural resources in these areas. Such a temporary and/or emergency closures are consistent with the Travel Management Rule (36 CFR 212.52 (b), 36 CFR 261 subpart B).

The designation "road or trail open to all motor vehicles" does not supersede State traffic law.



Maps on the Go!

Get your Forest Service maps using the map app. Scan the QR code that will take you to pdf-maps.com where you can download for free the map app for both IOS and Android! Then download your favorite National Forest MVUM Map. These maps will fit in your pocket. You can also download your favorite MVUM map for free from the local National Forest website you are visiting.

Motor vehicles may be parked within one vehicle length from the edge of the road surface when it is safe to do so without causing damage to NFS resources or facilities, unless prohibited by state law, a traffic sign, or an order (36 CFR 261.54).

The U.S. Department of Agriculture (USDA) prohibits discrimination in all its programs and activities on the basis of race, color, national origin, age, disability, and where applicable, sex, marital status, familial status, parental status, religion, sexual orientation, genetic information, political beliefs, reprisal, or because all or part of an individual's income is derived from any public assistance program. (Not all prohibited bases apply to all programs.) Persons with disabilities who require alternative means for communication of program information (Braille, large print, audiotape, etc.) should contact USDA's TARGET Center at (202) 720-2600 (voice and TDD). To file a complaint of discrimination, write to USDA, Director, Office of Civil Rights, 1400 Independence Avenue, S.W., Washington, D.C. 20250-9410, or call (800) 795-3272 (voice) or (202) 720-6382 (TDD). USDA is an equal opportunity provider and employer.

